

# quick SELECTION tiles & planks





# quick SELECTION

tiles & planks

**de** Unsere Quick Selection Tiles & Planks bietet 17 vielfältige Designs in drei Stilrichtungen mit je sechs Farbvarianten. Die Kollektion umfasst sowohl moderne und zeitlose, als auch klassische Muster. Erhältlich in den Größen 50 x 50 cm und 25 x 100 cm.

**en** Our Quick Selection Tiles & Planks offers 17 varied designs in three styles, each with six colour variants. The collection includes modern and timeless as well as classic patterns. Available in the sizes 50 x 50 cm and 25 x 100 cm.

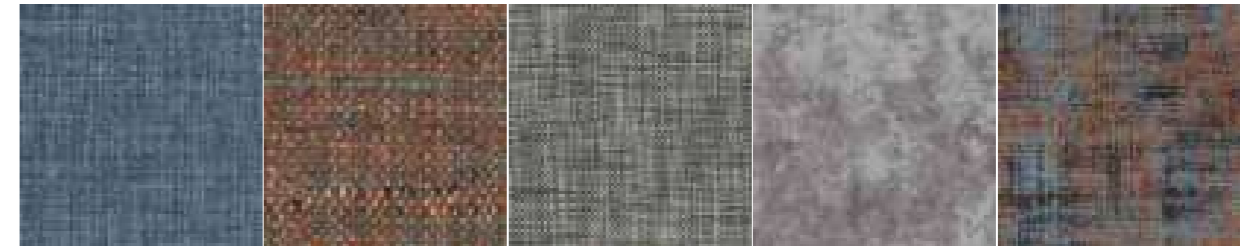
**fr** Notre Quick Selection Tiles & Planks propose 17 designs variés dans trois styles avec six variantes de couleurs chacun. La collection comprend aussi bien des motifs modernes et intemporels que des motifs classiques. Disponible dans les dimensions 50 x 50 cm et 25 x 100 cm.

- Produziert mit modernster Chromojet-Technologie
- Verfügbar in zwei Qualitäten
- Farbbank mit 24 Farben
- Drei verschiedene Rubriken
- Sechs Farbvarianten pro Design
- Unkomplizierte Auswahl
- Einfach zu bestellen
- Schneller Musterservice
- Kurze Lieferzeiten
- Wettbewerbsfähige Preise

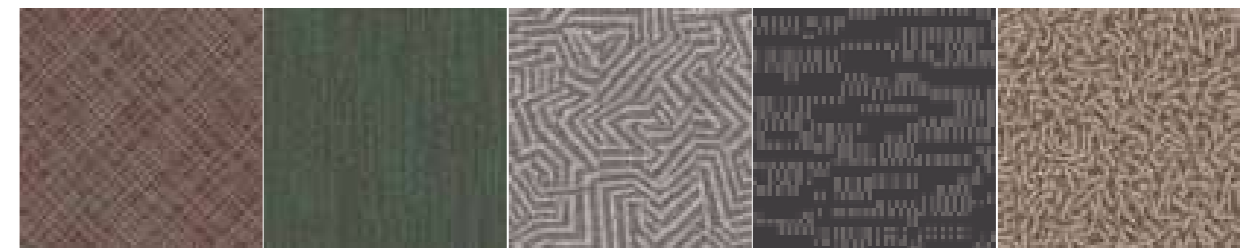
- Manufactured with the latest Chromojet technology
- Available in two qualities
- Colour bank with 24 colours
- Three different categories
- 6 colour choices per design
- Uncomplicated selection
- Easy to order
- Quick sample service
- Short delivery times
- Competitive prices

- Fabriqué avec la dernière technologie Chromojet
- Disponible en deux qualités
- Banque de couleurs avec 24 couleurs
- Trois rubriques différentes
- 6 choix de coloris différents par modèle
- Une sélection simple
- Facile à commander
- Un envoi d'échantillon rapide
- Des délais de livraison courts
- Des prix compétitifs

## MODERN



## TIMELESS



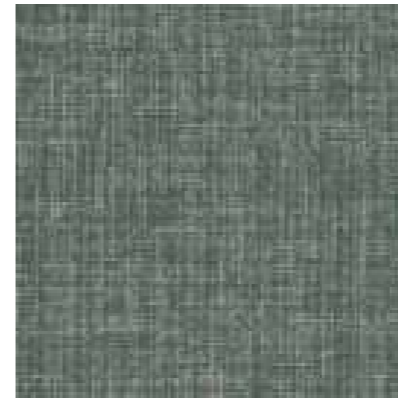
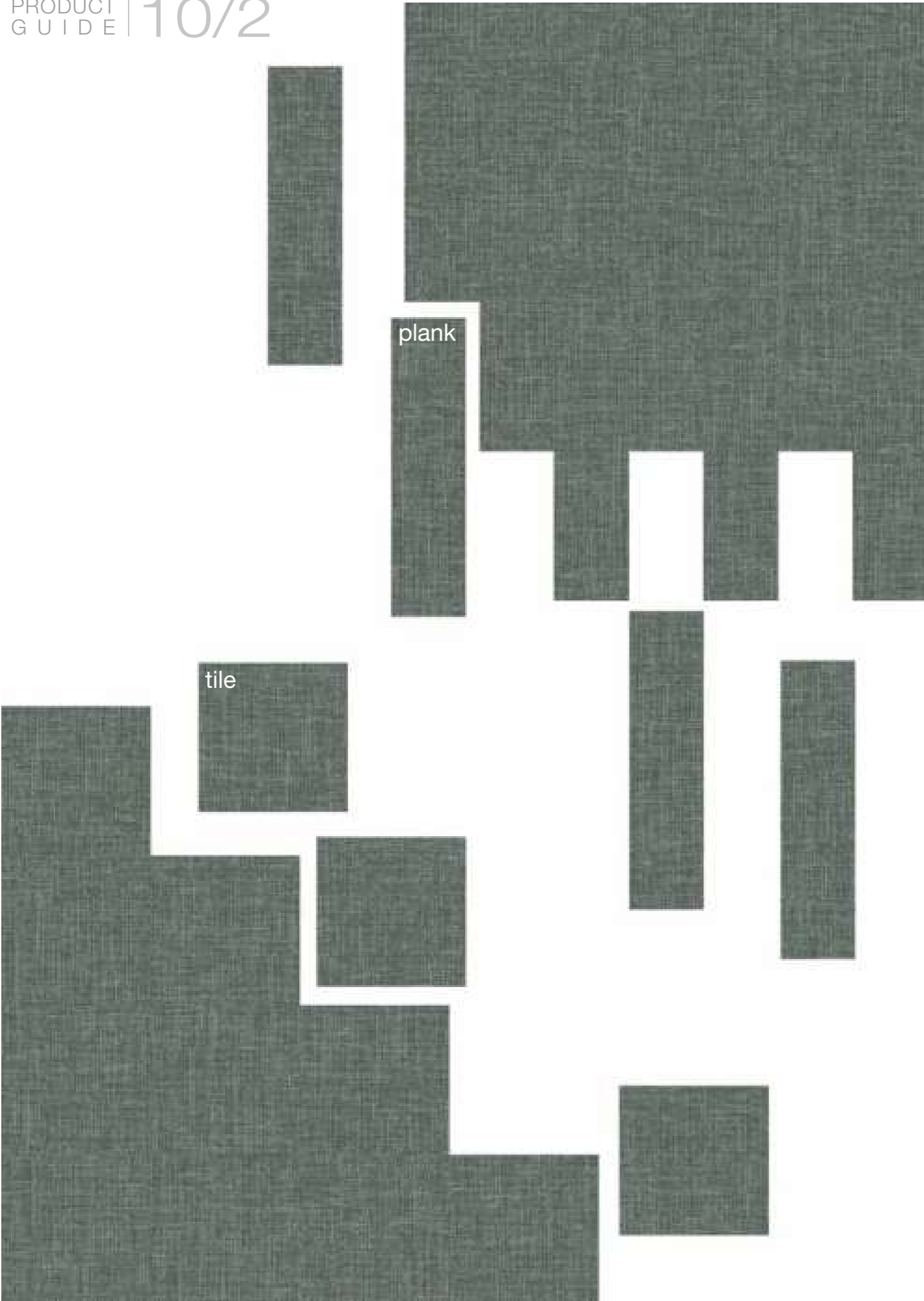
## CLASSIC





QS110tile - 3

MODERN



**QS110tile - 6**  
Repeat appr. 400 x 303 cm  
Det. appr. 50 x 50 cm  
9910 9061 6933 6059



**QS110tile - 2**  
Repeat appr. 400 x 303 cm  
Det. appr. 50 x 50 cm  
8061 9911 9910 9061



**QS110tile - 5**  
Repeat appr. 400 x 303 cm  
Det. appr. 50 x 50 cm  
9055 9054 9053 9052



**QS110tile - 1**  
Repeat appr. 400 x 303 cm  
Det. appr. 50 x 50 cm  
9914 9902 9911 9910



**QS110tile - 3**  
Repeat appr. 400 x 303 cm  
Det. appr. 50 x 50 cm  
8065 8071 8063 8061



**QS110tile - 4**  
Repeat appr. 400 x 303 cm  
Det. appr. 50 x 50 cm  
8057 8064 8063 8061



**QS111tile - 6**  
 Repeat appr. 400 x 232 cm  
 Det. appr. 67 x 67 cm

8935	8079	8058	8057	8064	8063
8061	9914	9911	9910	9061	



**QS111tile - 4**  
 Repeat appr. 400 x 232 cm  
 Det. appr. 67 x 67 cm

8935	8927	2068	2063	8058	8057
8061	8945	9902	9061	6933	6059



**QS111tile - 3**  
 Repeat appr. 400 x 232 cm  
 Det. appr. 67 x 67 cm

8061	8945	9914	9902	9911	9910
9061	9054	9053	9052	6933	6059



**QS111tile - 1**  
 Repeat appr. 400 x 232 cm  
 Det. appr. 67 x 67 cm

8079	8058	8057	8064	8063	8061	8945	9914	9902	9911	9910	9061
------	------	------	------	------	------	------	------	------	------	------	------



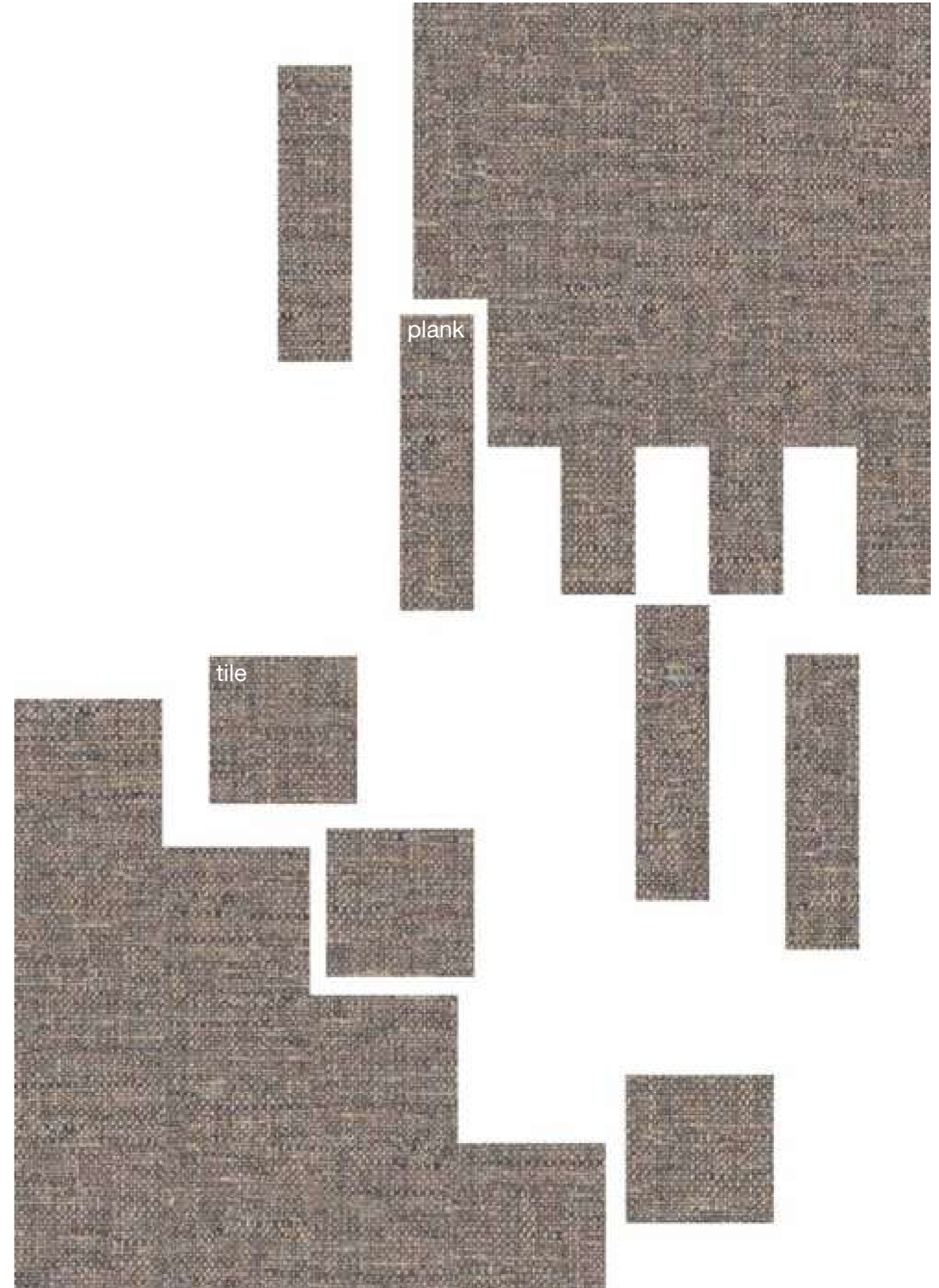
**QS111tile - 2**  
 Repeat appr. 400 x 232 cm  
 Det. appr. 67 x 67 cm

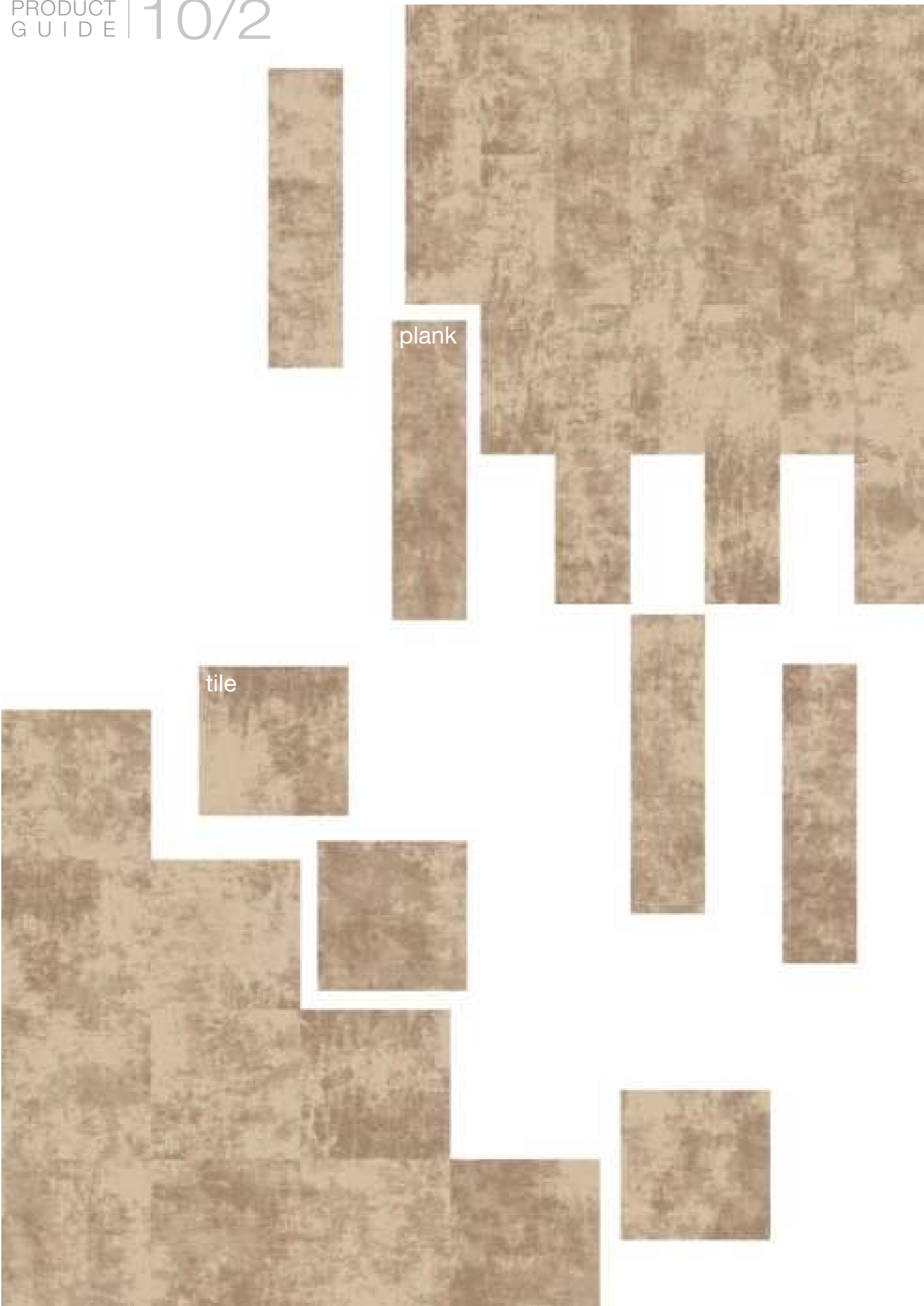
8061	9902	9911	9910	9061	
------	------	------	------	------	--



**QS111tile - 5**  
 Repeat appr. 400 x 232 cm  
 Det. appr. 67 x 67 cm

8065	8071	8064	8063	8061	9914
9902	9911	9910	9061	9052	





**QS112tile - 4**  
Repeat appr. 400 x 339 cm  
Det. appr. 67 x 67 cm  
8064 8063 8061



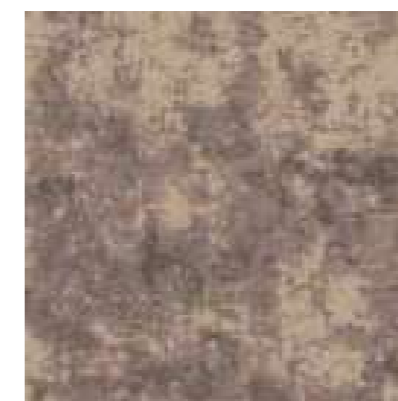
**QS112tile - 2**  
Repeat appr. 400 x 339 cm  
Det. appr. 67 x 67 cm  
9911 9910 9061



**QS112tile - 1**  
Repeat appr. 400 x 339 cm  
Det. appr. 67 x 67 cm  
9914 9902 9911



**QS112tile - 6**  
Repeat appr. 400 x 339 cm  
Det. appr. 67 x 67 cm  
9054 9053 9052



**QS112tile - 3**  
Repeat appr. 400 x 339 cm  
Det. appr. 67 x 67 cm  
8065 8071 8063

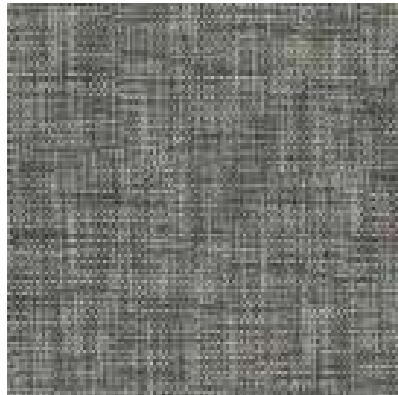
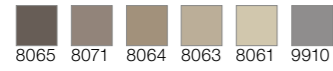


**QS112tile - 5**  
Repeat appr. 400 x 339 cm  
Det. appr. 67 x 67 cm  
9902 6933 6059



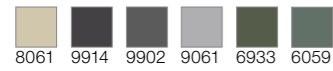
**QS113tile - 2**

Repeat appr. 200 x 176 cm  
Det. appr. 67 x 67 cm



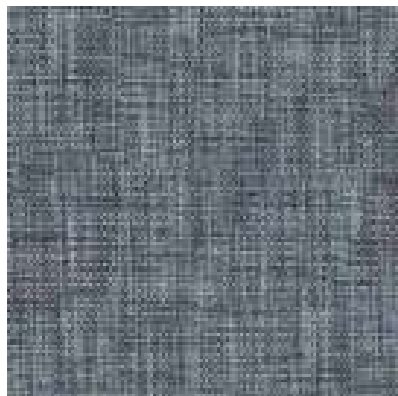
**QS113tile - 3**

Repeat appr. 200 x 176 cm  
Det. appr. 67 x 67 cm



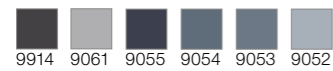
**QS113tile - 6**

Repeat appr. 200 x 176 cm  
Det. appr. 67 x 67 cm



**QS113tile - 4**

Repeat appr. 200 x 176 cm  
Det. appr. 67 x 67 cm



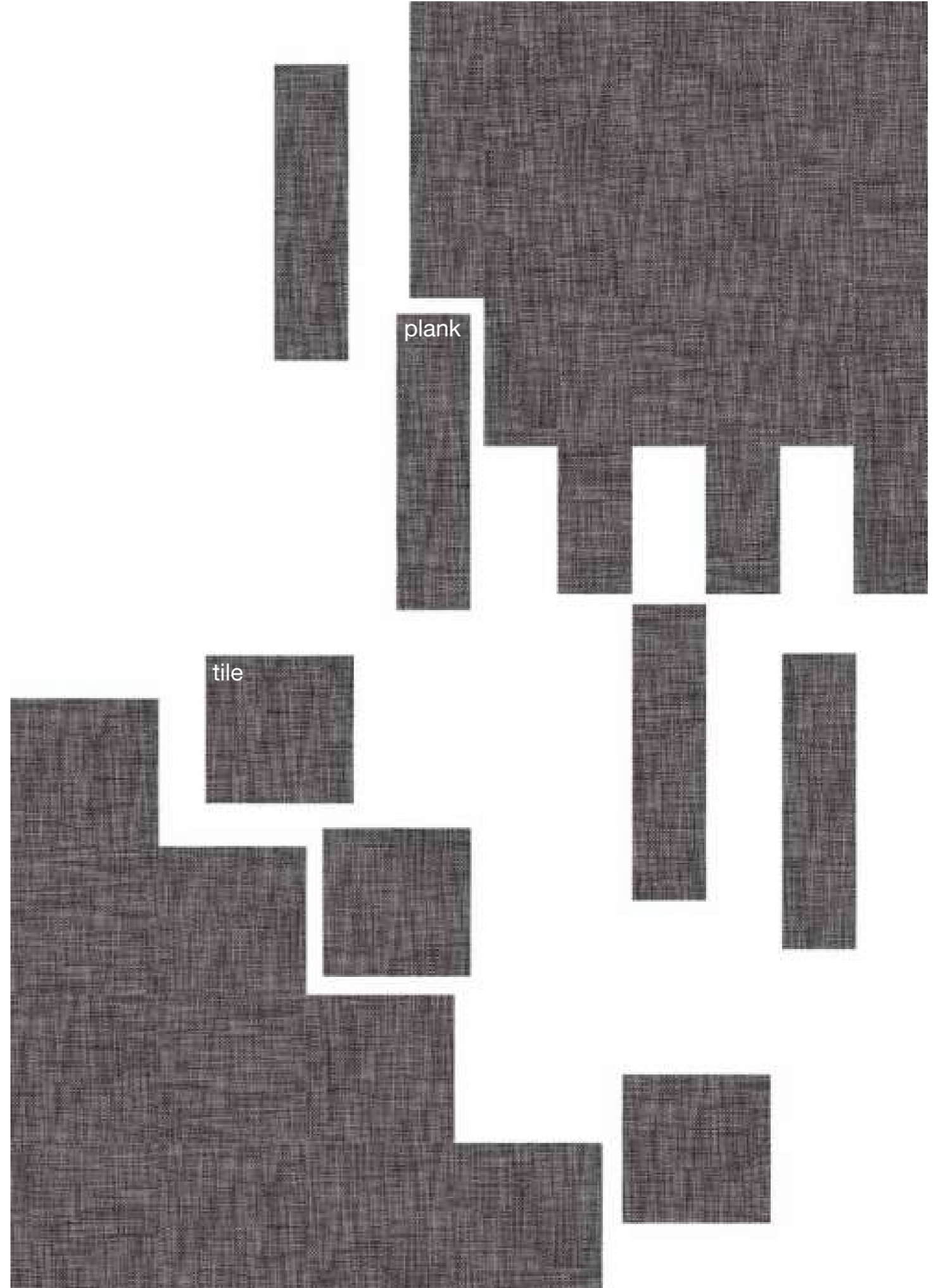
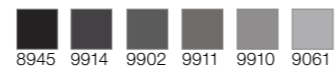
**QS113tile - 5**

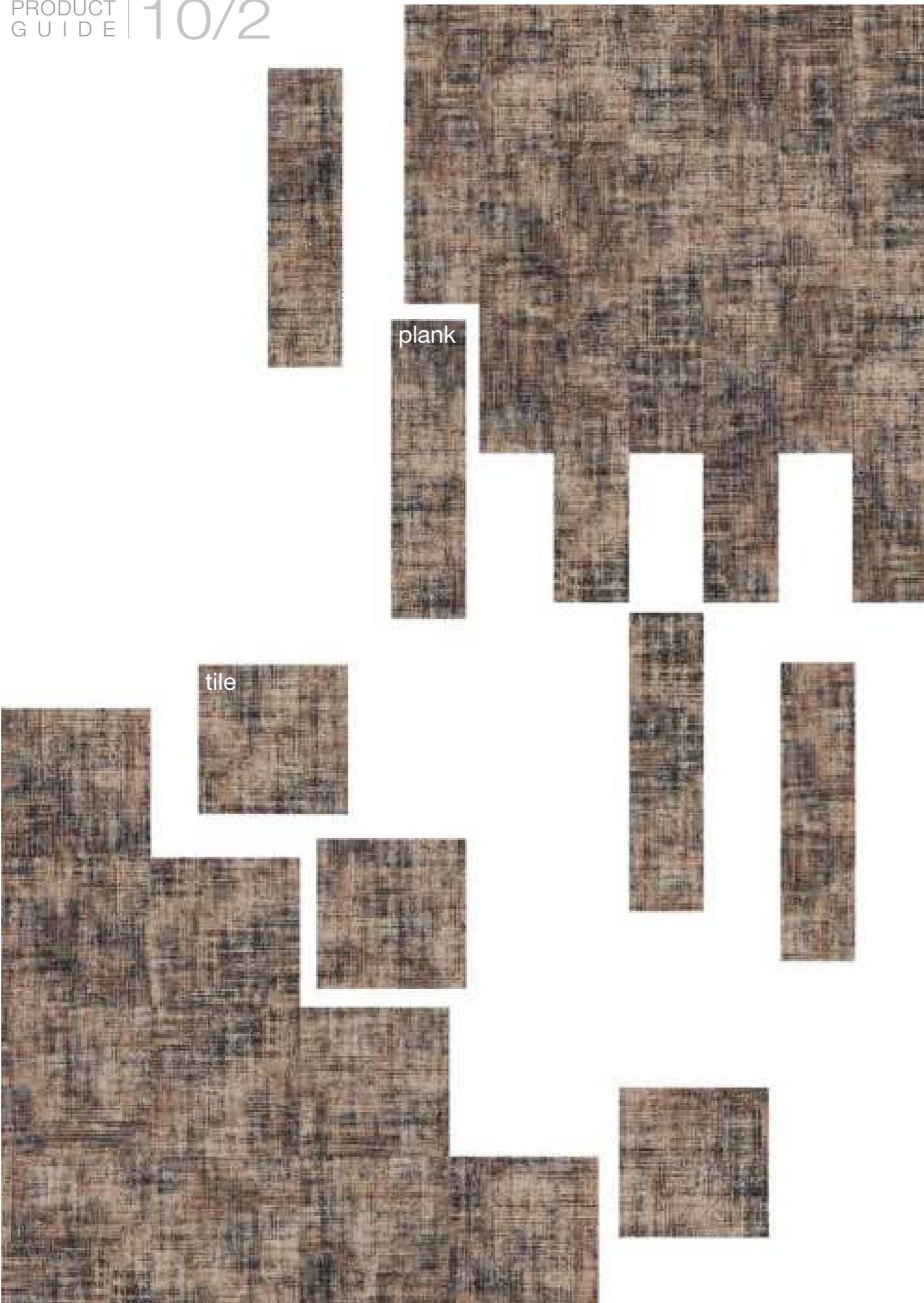
Repeat appr. 200 x 176 cm  
Det. appr. 67 x 67 cm



**QS113tile - 1**

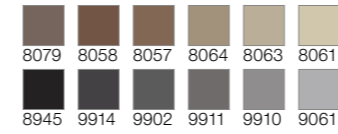
Repeat appr. 200 x 176 cm  
Det. appr. 67 x 67 cm





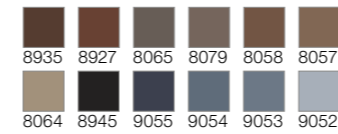
**QS114tile - 4**

Repeat appr. 400 x 186 cm  
Det. appr. 67 x 67 cm



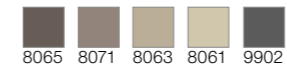
**QS114tile - 5**

Repeat appr. 400 x 186 cm  
Det. appr. 67 x 67 cm



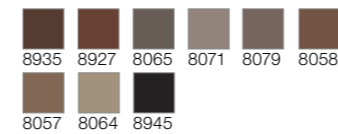
**QS114tile - 3**

Repeat appr. 400 x 186 cm  
Det. appr. 67 x 67 cm



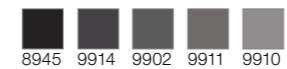
**QS114tile - 6**

Repeat appr. 400 x 186 cm  
Det. appr. 67 x 67 cm



**QS114tile - 1**

Repeat appr. 400 x 186 cm  
Det. appr. 67 x 67 cm



**QS114tile - 2**

Repeat appr. 400 x 186 cm  
Det. appr. 67 x 67 cm





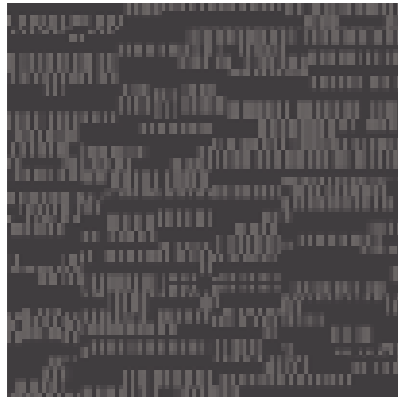
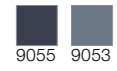
QS116tile - 6

**TIMELESS**



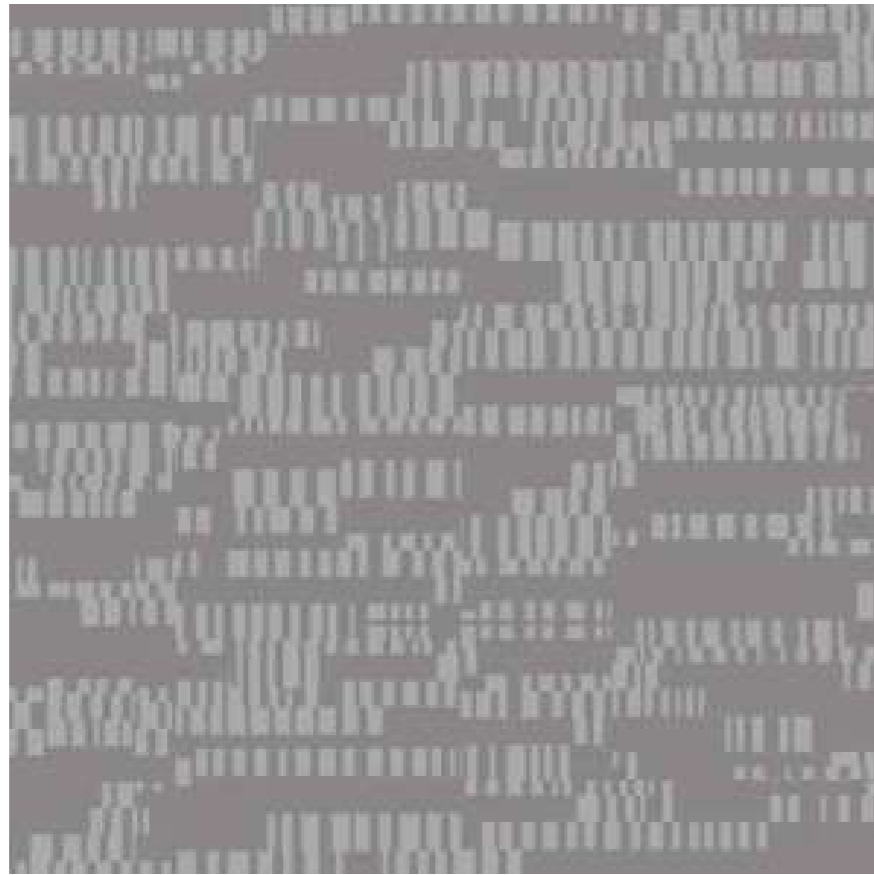
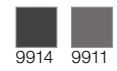
**QS116tile - 6**

Repeat appr. 133 x 172 cm  
Det. appr. 50 x 50 cm



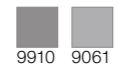
**QS116tile - 1**

Repeat appr. 133 x 172 cm  
Det. appr. 50 x 50 cm



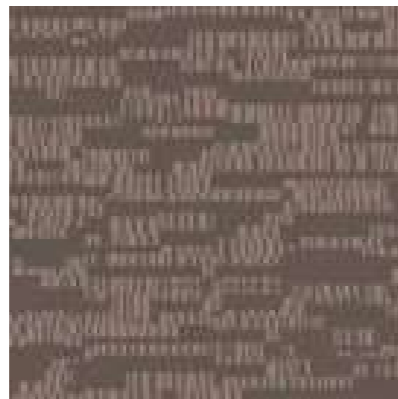
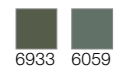
**QS116tile - 2**

Repeat appr. 133 x 172 cm  
Det. appr. 50 x 50 cm



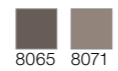
**QS116tile - 5**

Repeat appr. 133 x 172 cm  
Det. appr. 50 x 50 cm



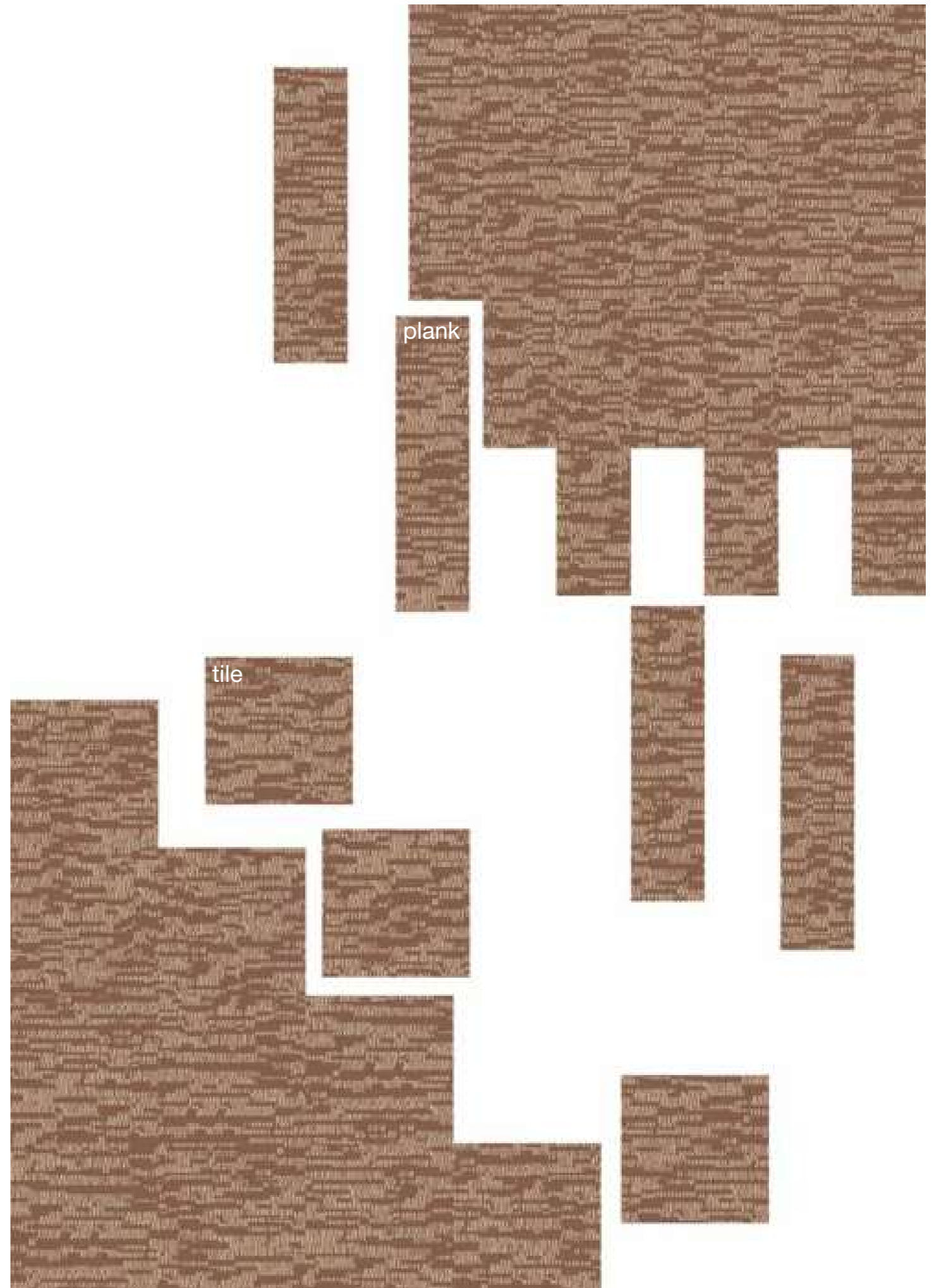
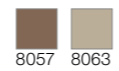
**QS116tile - 3**

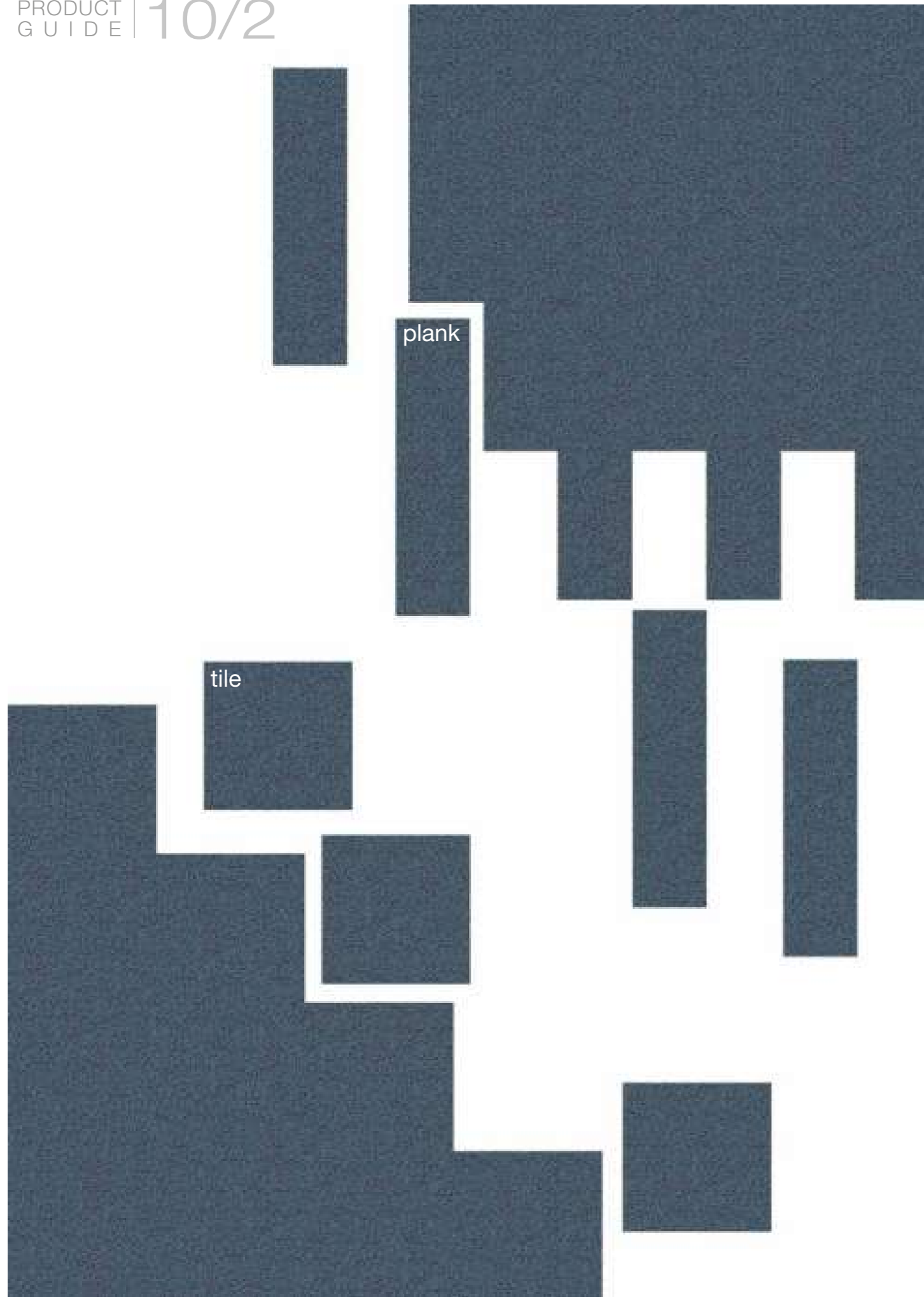
Repeat appr. 133 x 172 cm  
Det. appr. 50 x 50 cm



**QS116tile - 4**

Repeat appr. 133 x 172 cm  
Det. appr. 50 x 50 cm

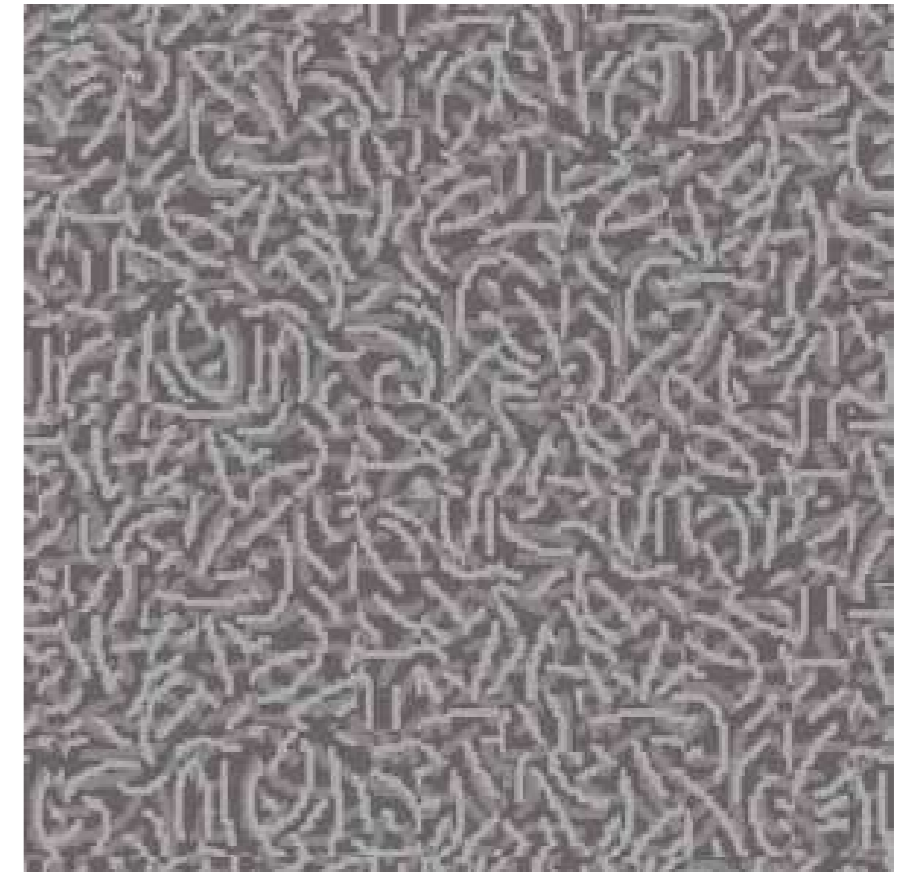




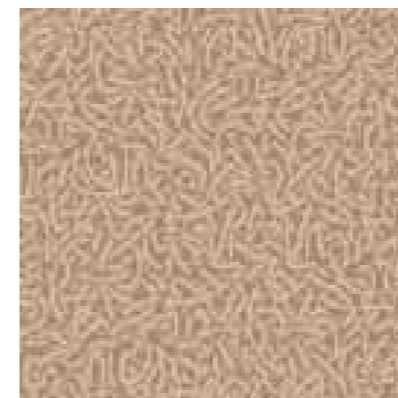
**QS115tile - 5**  
Repeat appr. 33 x 33 cm  
Det. appr. 33 x 33 cm  
9055 9054 9053



**QS115tile - 1**  
Repeat appr. 33 x 33 cm  
Det. appr. 33 x 33 cm  
9914 9902 9911



**QS115tile - 2**  
Repeat appr. 33 x 33 cm  
Det. appr. 33 x 33 cm  
9911 9910 9061



**QS115tile - 4**  
Repeat appr. 33 x 33 cm  
Det. appr. 33 x 33 cm  
8064 8063 8061



**QS115tile - 3**  
Repeat appr. 33 x 33 cm  
Det. appr. 33 x 33 cm  
8065 8071 8063



**QS115tile - 6**  
Repeat appr. 33 x 33 cm  
Det. appr. 33 x 33 cm  
8063 6933 6059

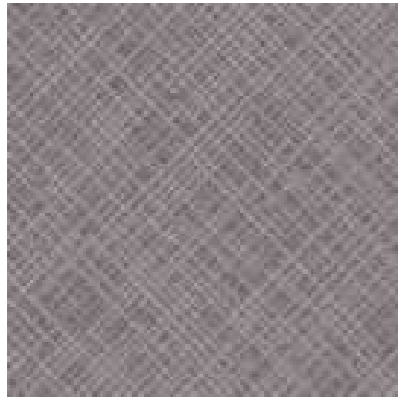


**QS118tile - 5**

Repeat appr. 133 x 131 cm  
Det. appr. 67 x 67 cm



8079 8058 8057

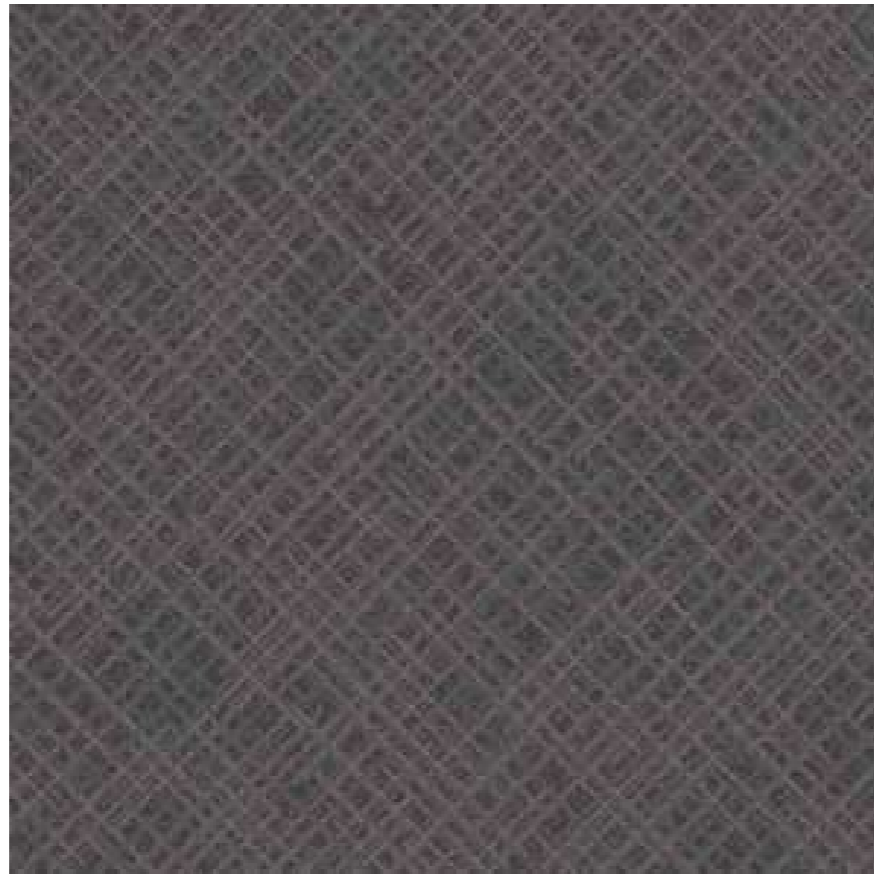


**QS118tile - 2**

Repeat appr. 133 x 131 cm  
Det. appr. 67 x 67 cm



9911 9910 9061



**QS118tile - 1**

Repeat appr. 133 x 131 cm  
Det. appr. 67 x 67 cm

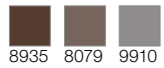


9914 9902 9911



**QS118tile - 6**

Repeat appr. 133 x 131 cm  
Det. appr. 67 x 67 cm



8935 8079 9910



**QS118tile - 4**

Repeat appr. 133 x 131 cm  
Det. appr. 67 x 67 cm



8064 8063 8061

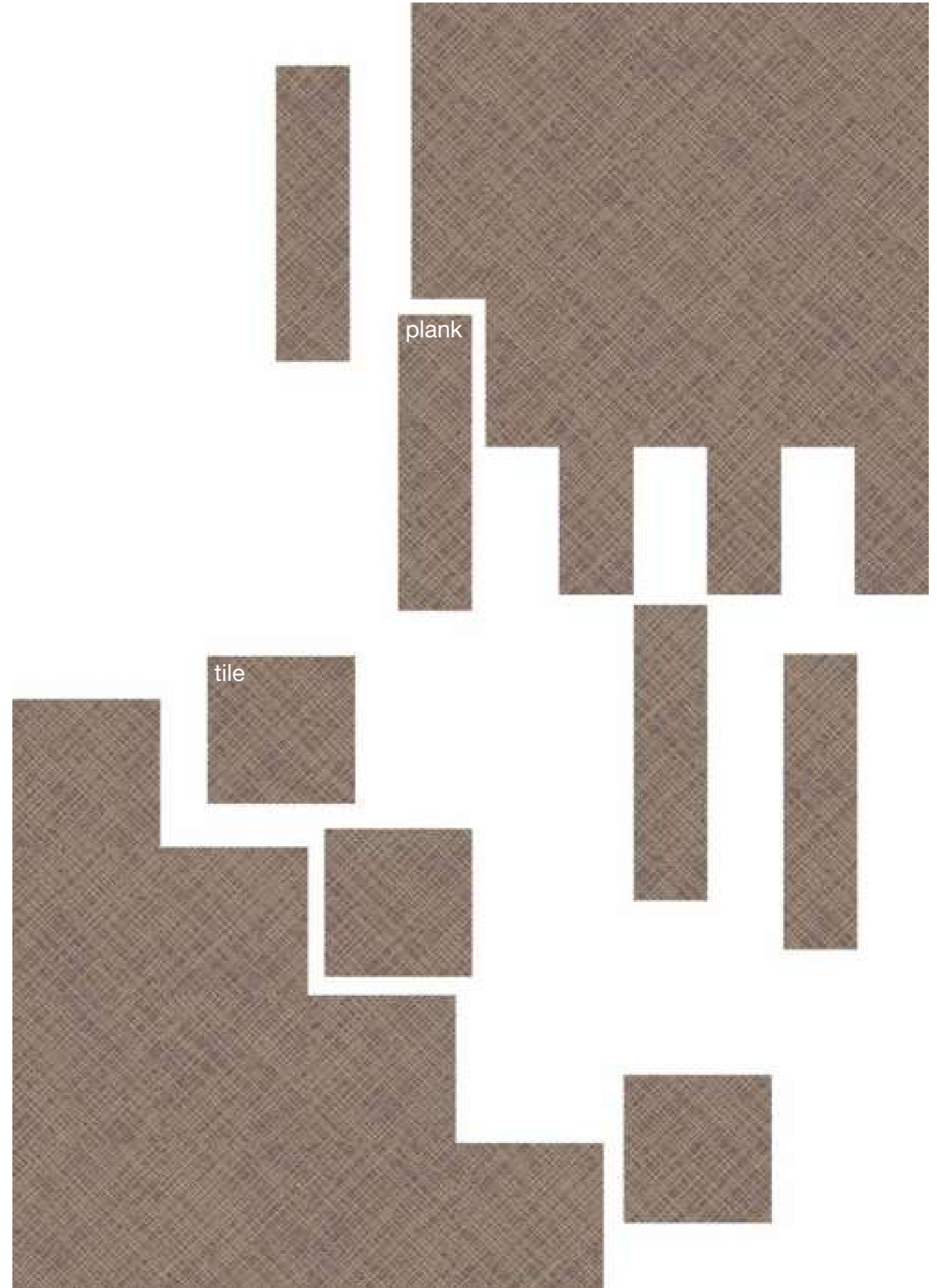


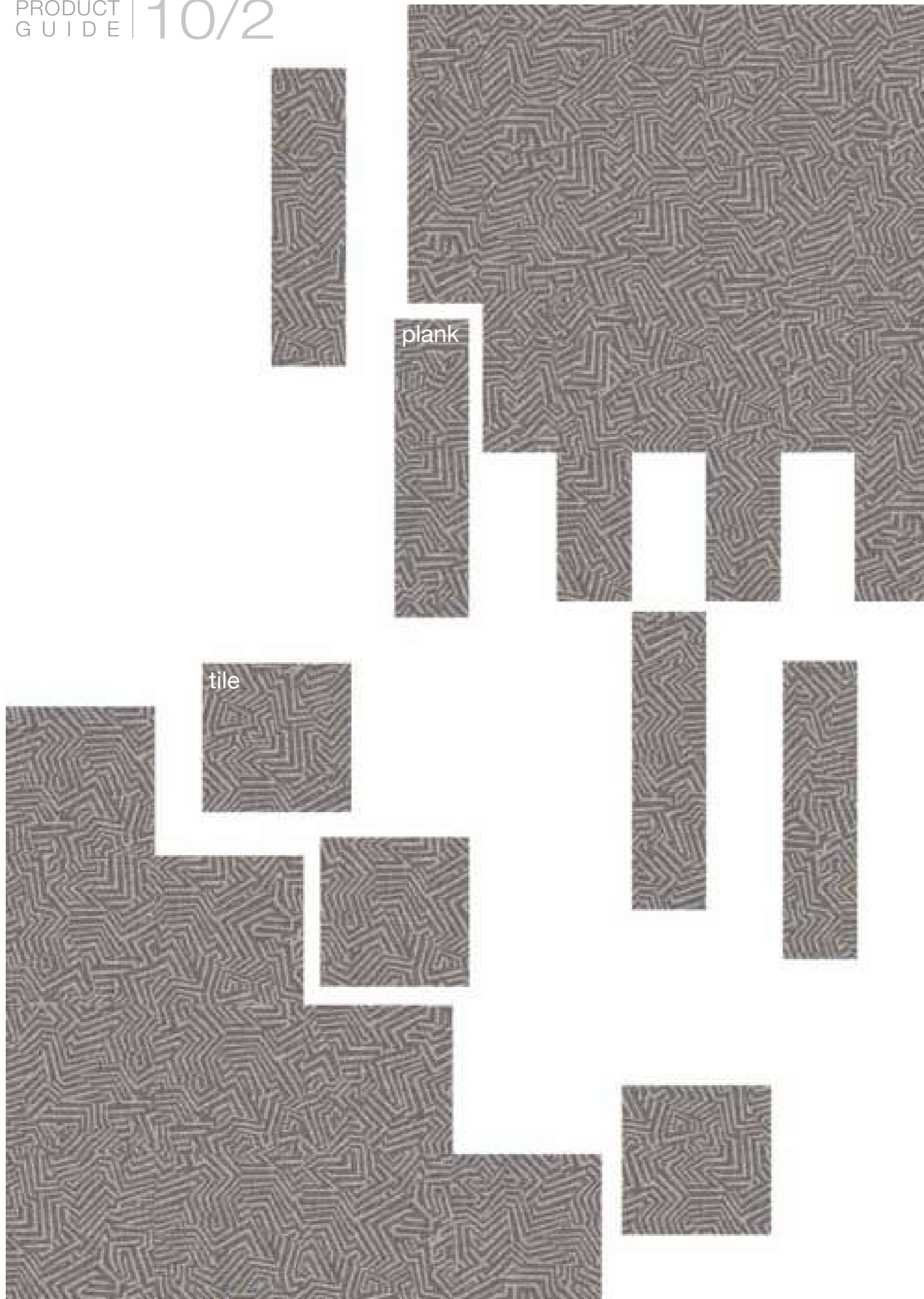
**QS118tile - 3**

Repeat appr. 133 x 131 cm  
Det. appr. 67 x 67 cm



8065 8071 8063





**QS117tile - 2**  
Repeat appr. 133 x 131 cm  
Det. appr. 67 x 67 cm  
8061 9911 9910 9061



**QS117tile - 1**  
Repeat appr. 133 x 131 cm  
Det. appr. 67 x 67 cm  
9914 9902 9911 9910



**QS117tile - 6**  
Repeat appr. 133 x 131 cm  
Det. appr. 67 x 67 cm  
9910 9061 6933 6059



**QS117tile - 5**  
Repeat appr. 133 x 131 cm  
Det. appr. 67 x 67 cm  
9055 9054 9053 9052



**QS117tile - 4**  
Repeat appr. 133 x 131 cm  
Det. appr. 67 x 67 cm  
8057 8064 8063 8061

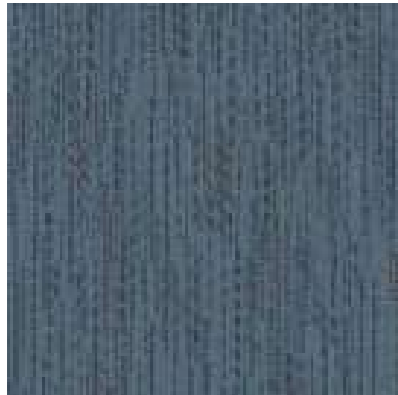
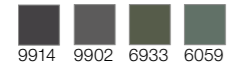


**QS117tile - 3**  
Repeat appr. 133 x 131 cm  
Det. appr. 67 x 67 cm  
8065 8071 8063 8061



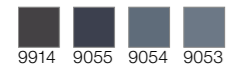
**QS119tile - 6**

Repeat appr. 80 x 79 cm  
Det. appr. 50 x 50 cm



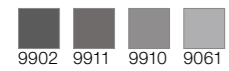
**QS119tile - 5**

Repeat appr. 80 x 79 cm  
Det. appr. 50 x 50 cm



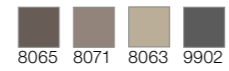
**QS119tile - 2**

Repeat appr. 80 x 79 cm  
Det. appr. 50 x 50 cm



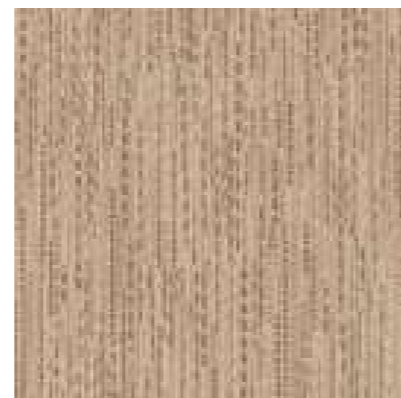
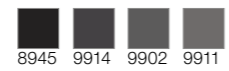
**QS119tile - 3**

Repeat appr. 80 x 79 cm  
Det. appr. 50 x 50 cm



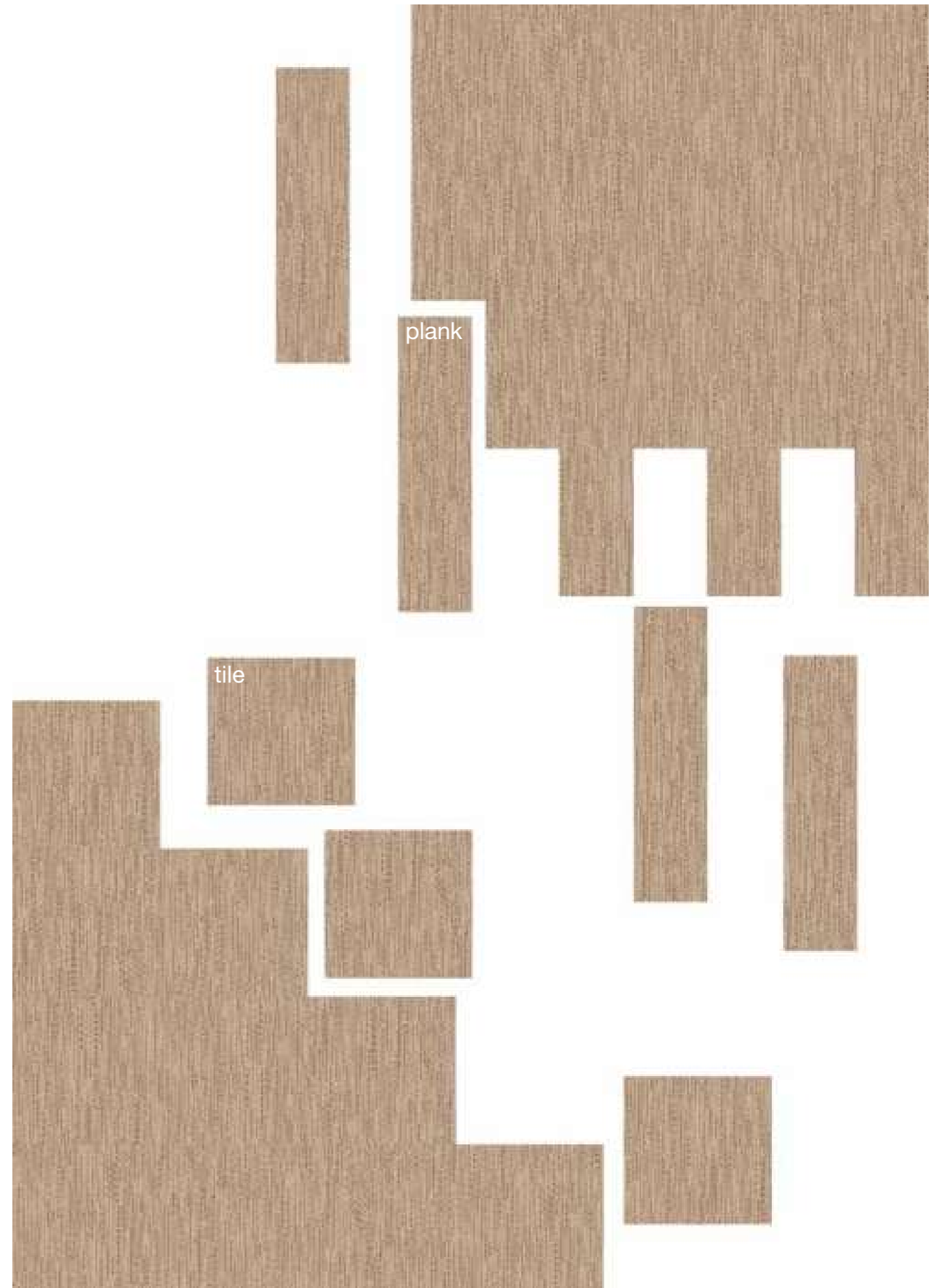
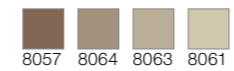
**QS119tile - 1**

Repeat appr. 80 x 79 cm  
Det. appr. 50 x 50 cm



**QS119tile - 4**

Repeat appr. 80 x 79 cm  
Det. appr. 50 x 50 cm





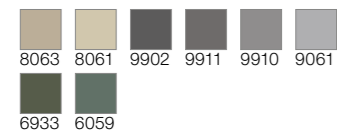
QS120tile - 2

CLASSIC



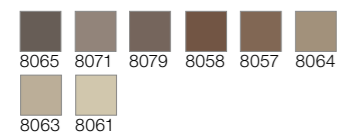
**QS120tile - 6**

Repeat appr. 200 x 265 cm  
Det. appr. 100 x 100 cm



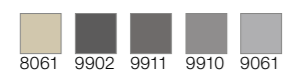
**QS120tile - 4**

Repeat appr. 200 x 265 cm  
Det. appr. 100 x 100 cm



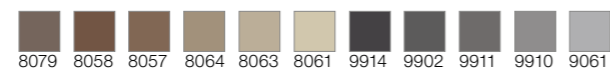
**QS120tile - 2**

Repeat appr. 200 x 265 cm  
Det. appr. 100 x 100 cm



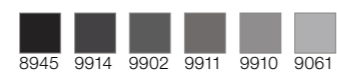
**QS120tile - 3**

Repeat appr. 200 x 265 cm  
Det. appr. 100 x 100 cm



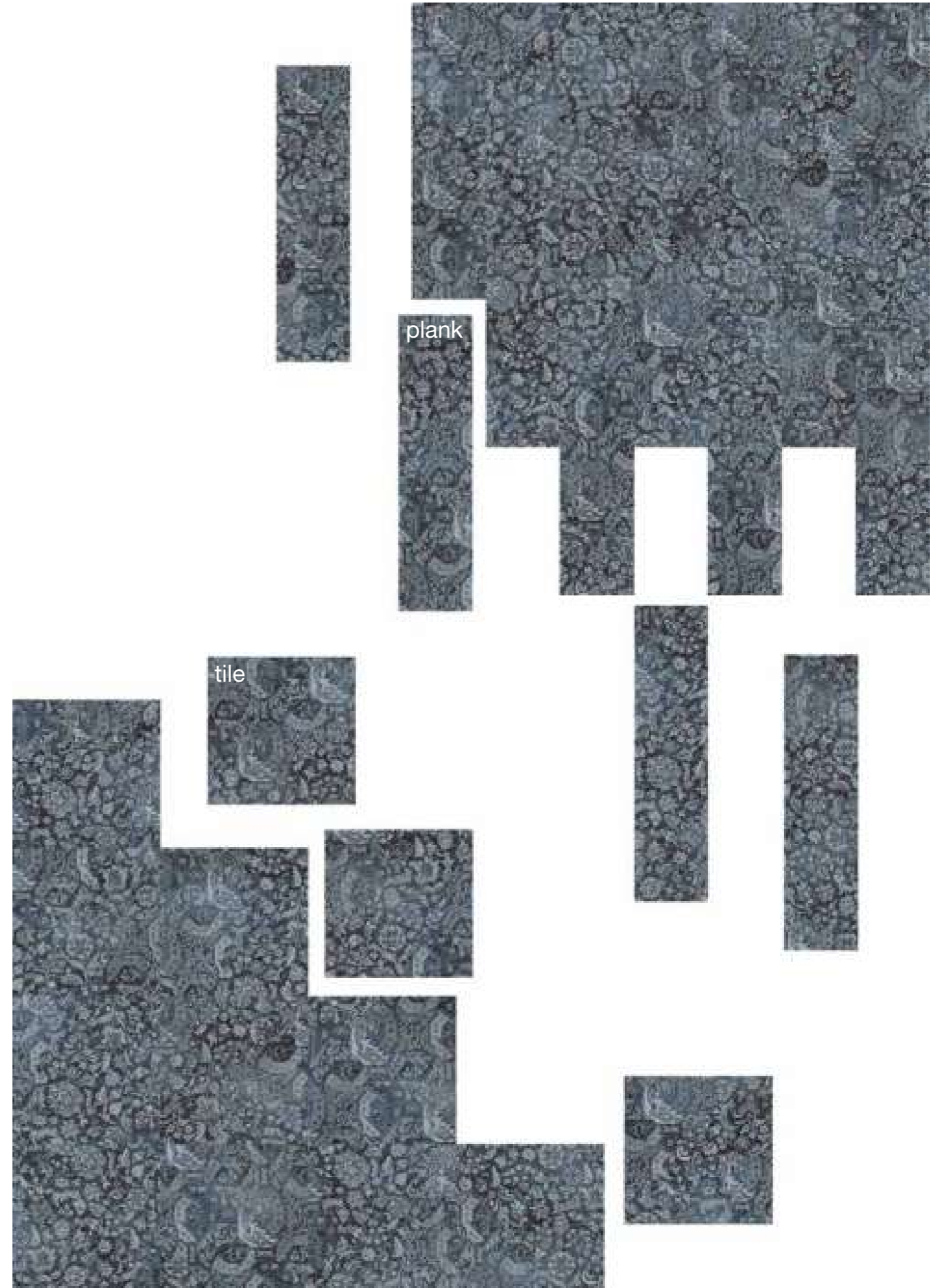
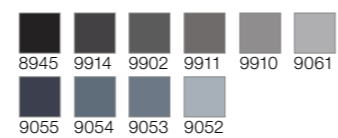
**QS120tile - 1**

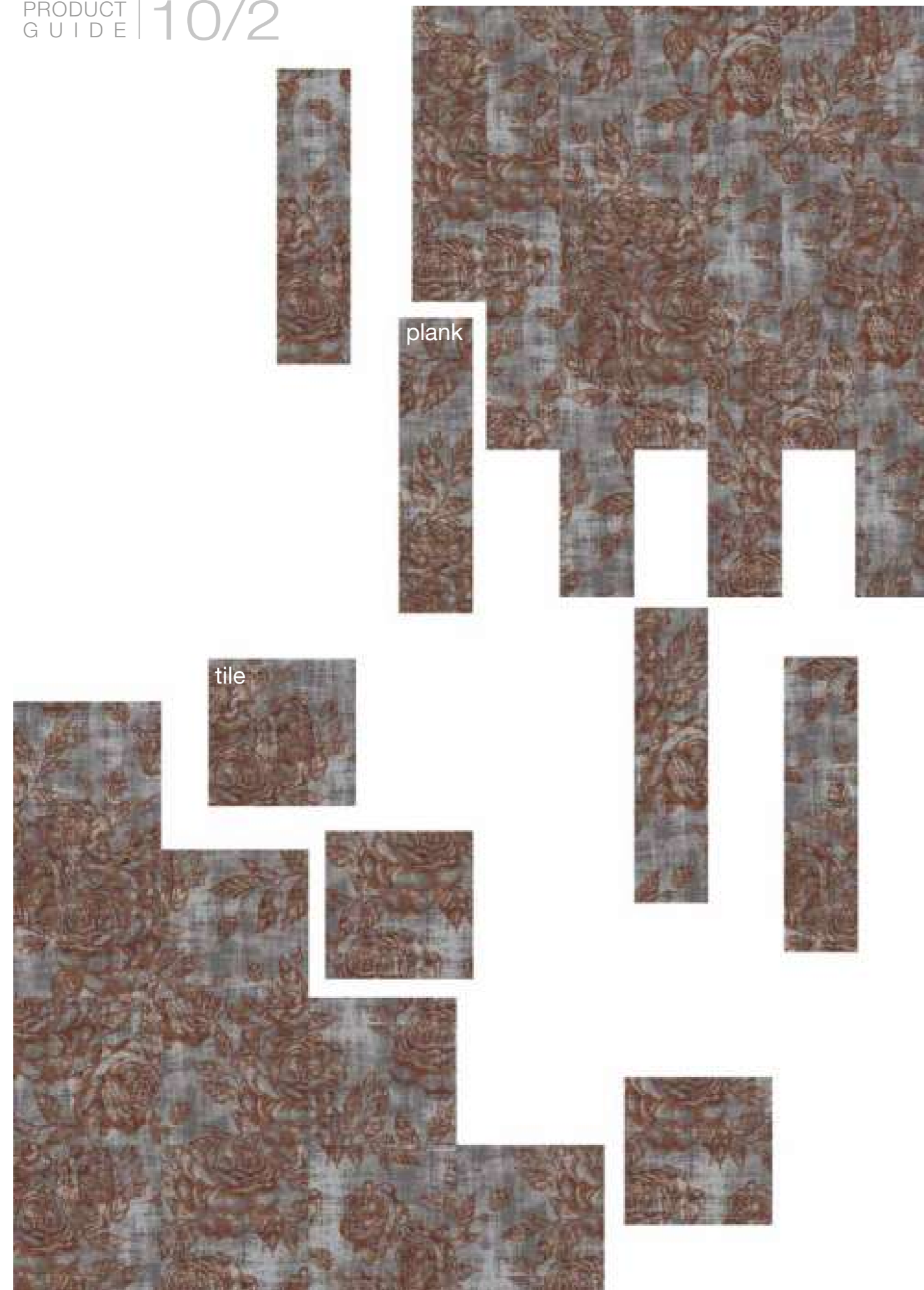
Repeat appr. 200 x 265 cm  
Det. appr. 100 x 100 cm



**QS120tile - 5**

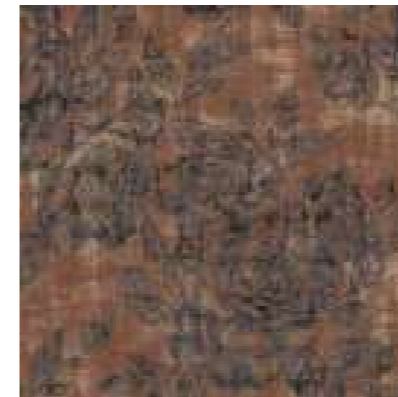
Repeat appr. 200 x 265 cm  
Det. appr. 100 x 100 cm





**QS123tile - 3**  
Repeat appr. 133 x 131 cm  
Det. appr. 100 x 100 cm

8935	8927	8079	8058	8057	8064
9911	9910	9061			



**QS123tile - 4**  
Repeat appr. 133 x 131 cm  
Det. appr. 100 x 100 cm

8065	8058	8057	8064	8945	9914
9902					



**QS123tile - 1**  
Repeat appr. 133 x 131 cm  
Det. appr. 100 x 100 cm

8065	8945	9914	9902	9911	9910	9061



**QS123tile - 2**  
Repeat appr. 133 x 131 cm  
Det. appr. 100 x 100 cm

8071	8063	8061	8945	9914	9902
9911	9910				



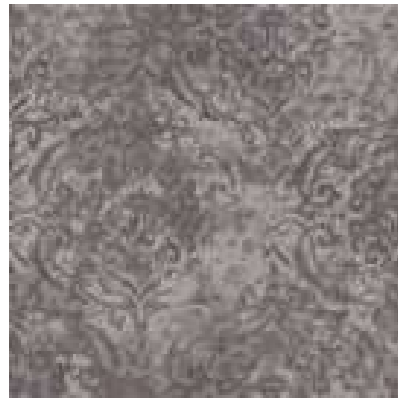
**QS123tile - 6**  
Repeat appr. 133 x 131 cm  
Det. appr. 100 x 100 cm

8061	9914	9902	9910	9061	6933
6059					



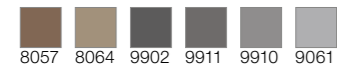
**QS123tile - 5**  
Repeat appr. 133 x 131 cm  
Det. appr. 100 x 100 cm

8945	9914	9902	9911	9054	9053
9052					



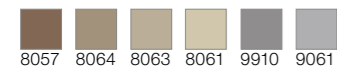
**QS109tile - 1**

Repeat appr. 400 x 273 cm  
Det. appr. 100 x 100 cm



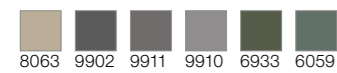
**QS109tile - 3**

Repeat appr. 400 x 273 cm  
Det. appr. 100 x 100 cm



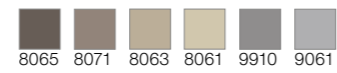
**QS109tile - 4**

Repeat appr. 400 x 273 cm  
Det. appr. 100 x 100 cm



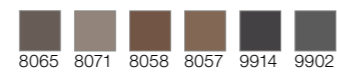
**QS109tile - 2**

Repeat appr. 400 x 273 cm  
Det. appr. 100 x 100 cm



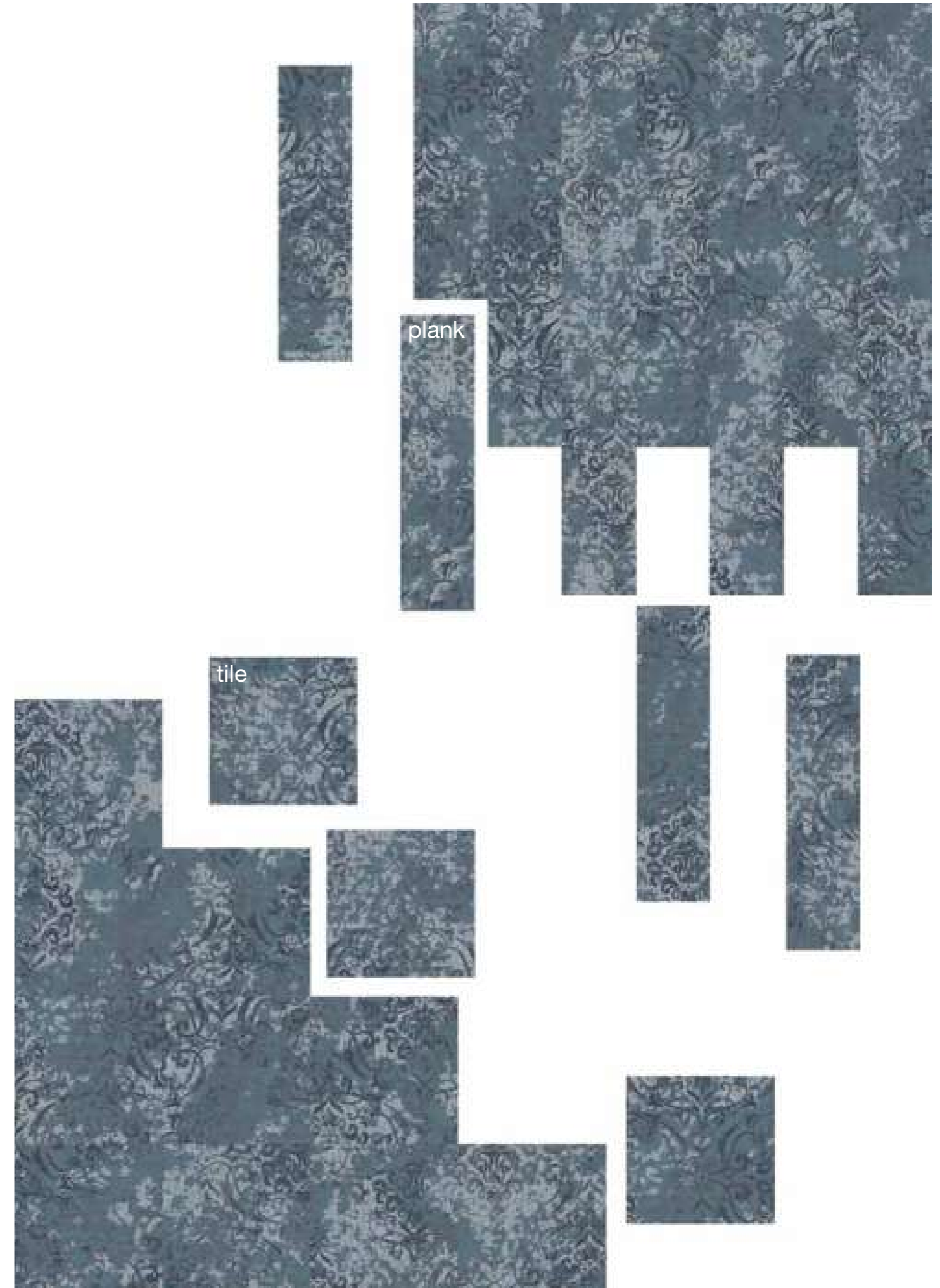
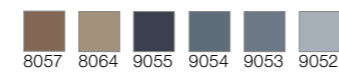
**QS109tile - 6**

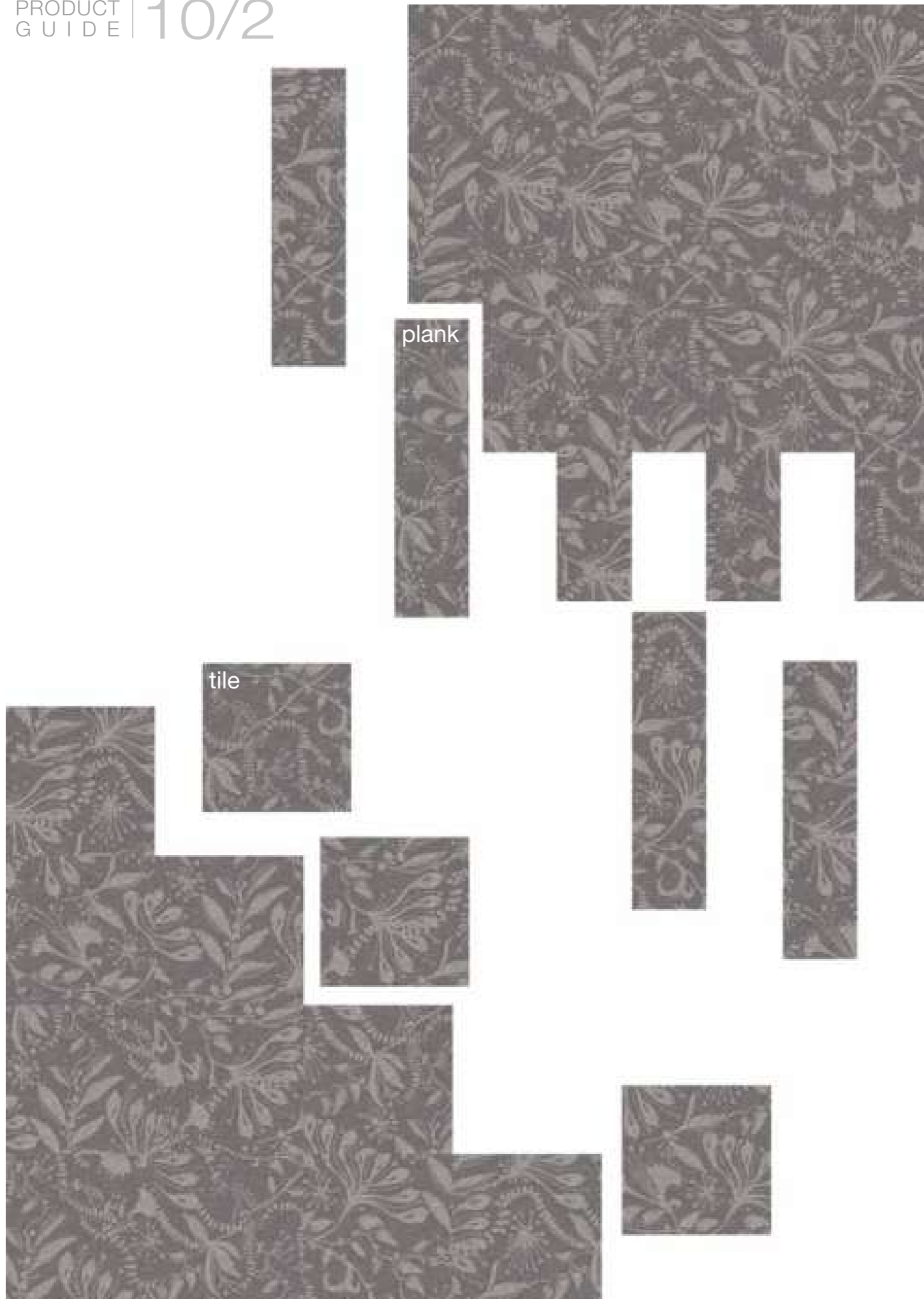
Repeat appr. 400 x 273 cm  
Det. appr. 100 x 100 cm



**QS109tile - 5**

Repeat appr. 400 x 273 cm  
Det. appr. 100 x 100 cm

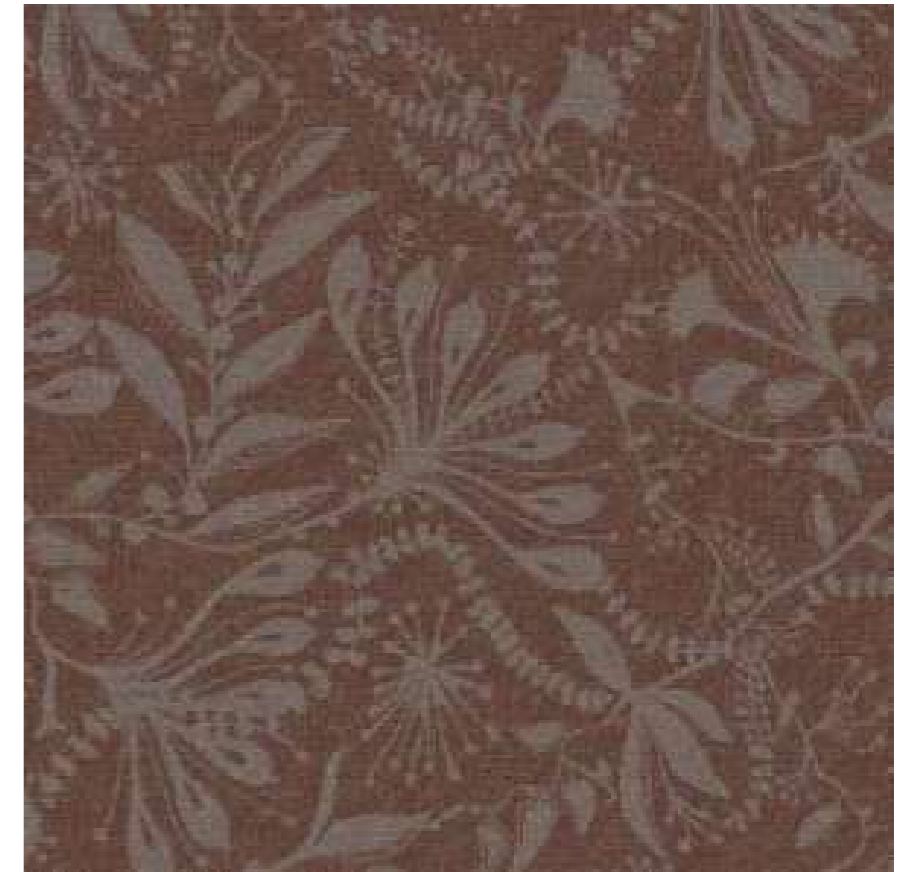




**QS121tile - 2**  
Repeat appr. 133 x 164 cm  
Det. appr. 100 x 100 cm  
8061 9911 9910 9061



**QS121tile - 1**  
Repeat appr. 133 x 164 cm  
Det. appr. 100 x 100 cm  
9914 9902 9911 9910



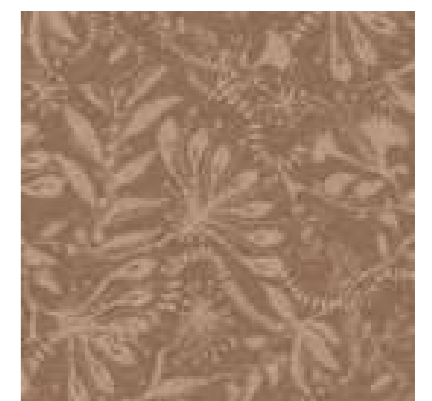
**QS121tile - 6**  
Repeat appr. 133 x 164 cm  
Det. appr. 100 x 100 cm  
8935 8079 9911 9910



**QS121tile - 5**  
Repeat appr. 133 x 164 cm  
Det. appr. 100 x 100 cm  
9055 9054 9053 9052



**QS121tile - 3**  
Repeat appr. 133 x 164 cm  
Det. appr. 100 x 100 cm  
8065 8071 8063 8061

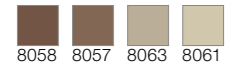


**QS121tile - 4**  
Repeat appr. 133 x 164 cm  
Det. appr. 100 x 100 cm  
8057 8064 8063 8061



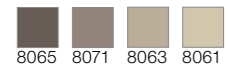
**QS122tile - 4**

Repeat appr. 133 × 131 cm  
Det. appr. 67 × 67 cm



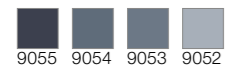
**QS122tile - 3**

Repeat appr. 133 × 131 cm  
Det. appr. 67 × 67 cm



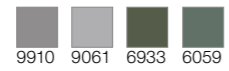
**QS122tile - 5**

Repeat appr. 133 × 131 cm  
Det. appr. 67 × 67 cm



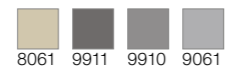
**QS122tile - 6**

Repeat appr. 133 × 131 cm  
Det. appr. 67 × 67 cm



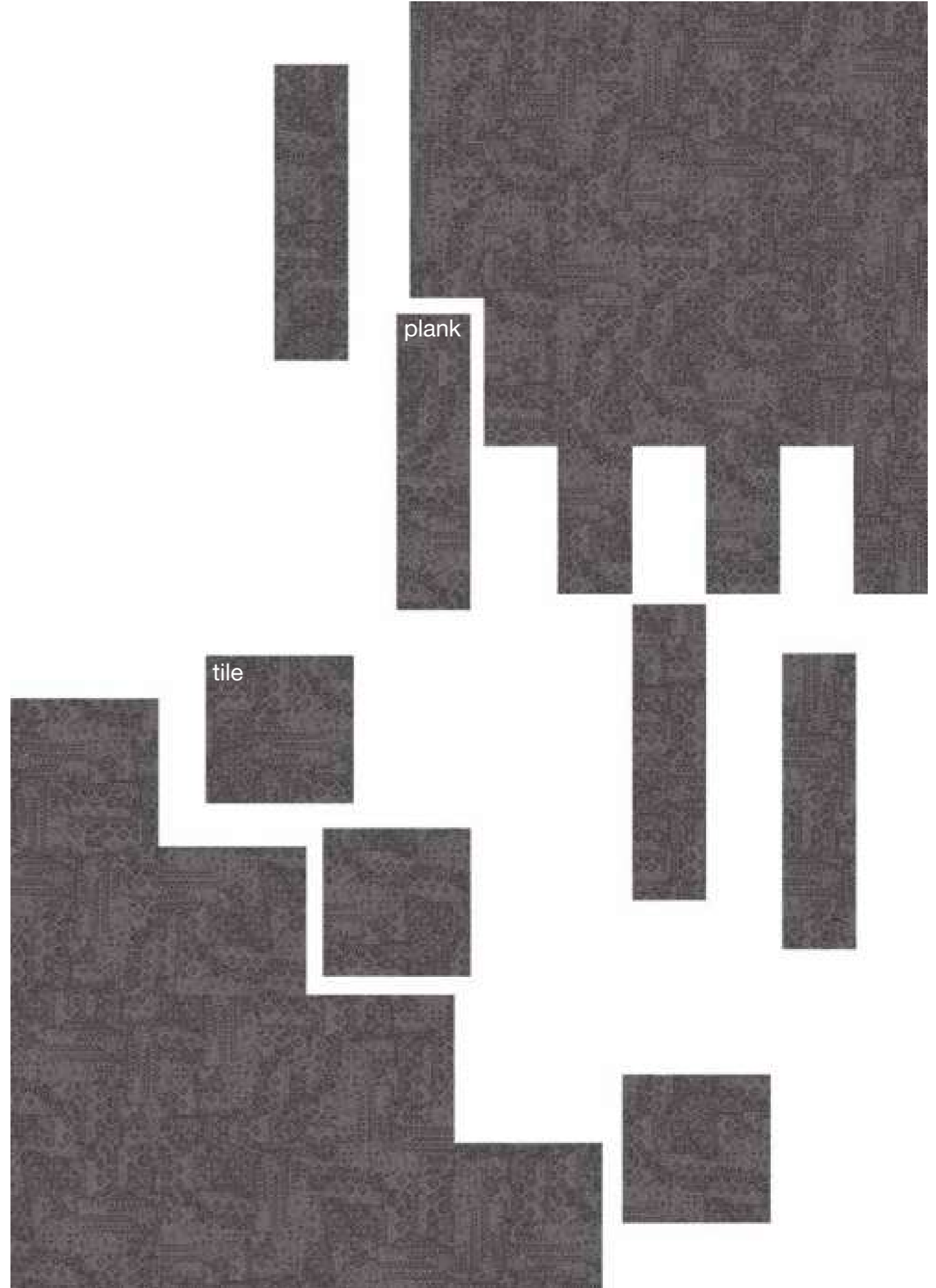
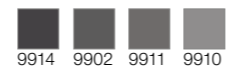
**QS122tile - 2**

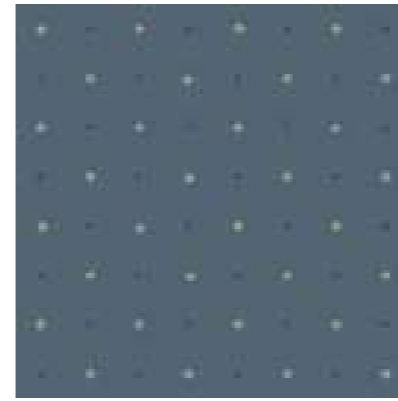
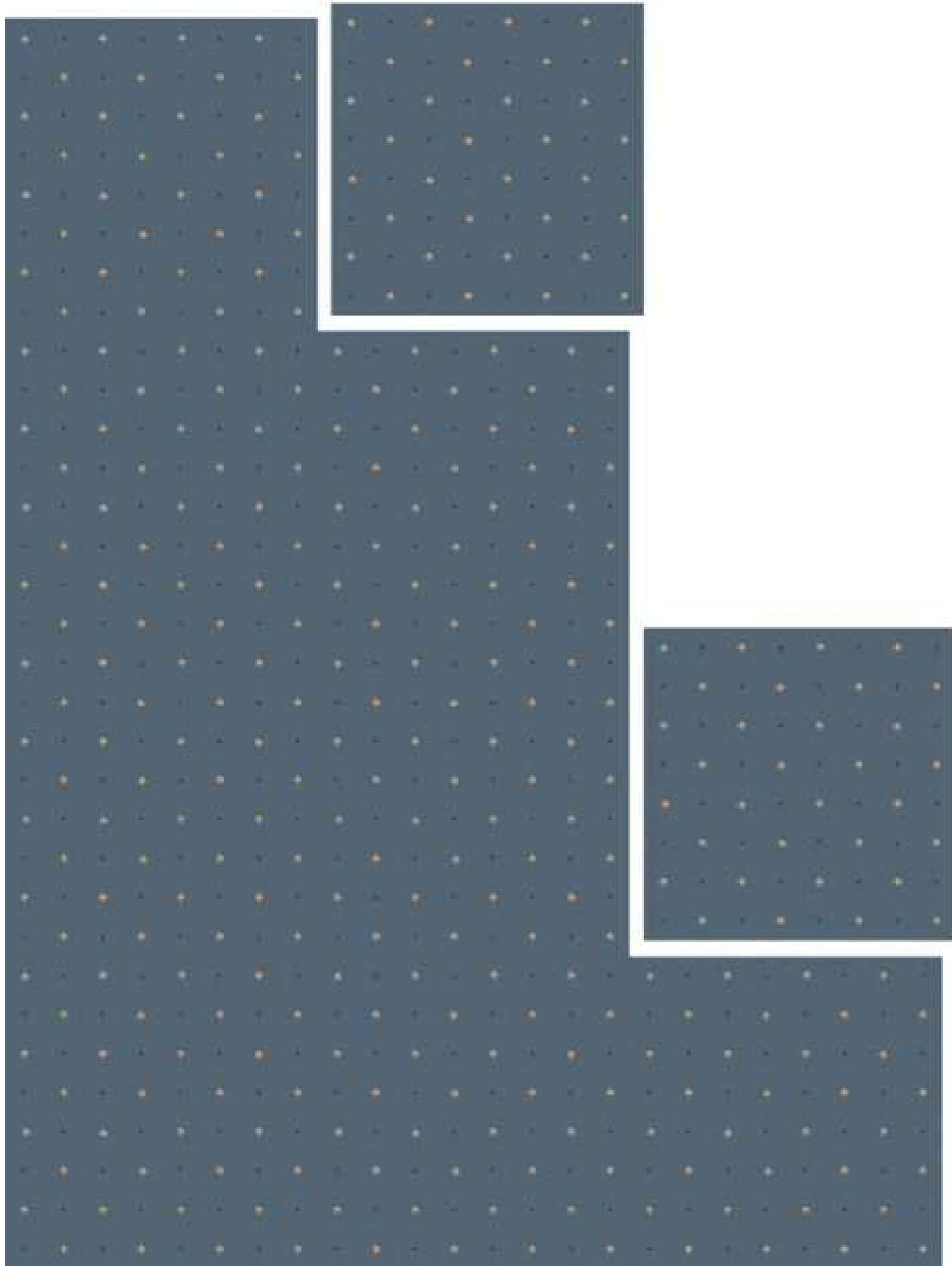
Repeat appr. 133 × 131 cm  
Det. appr. 67 × 67 cm



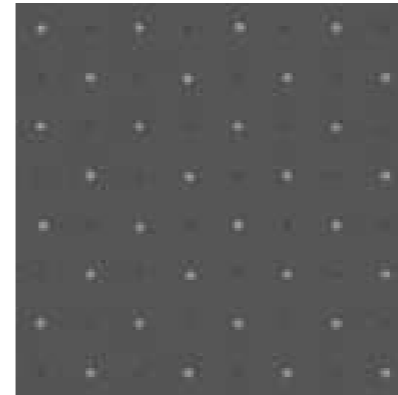
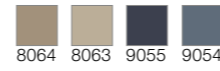
**QS122tile - 1**

Repeat appr. 133 × 131 cm  
Det. appr. 67 × 67 cm

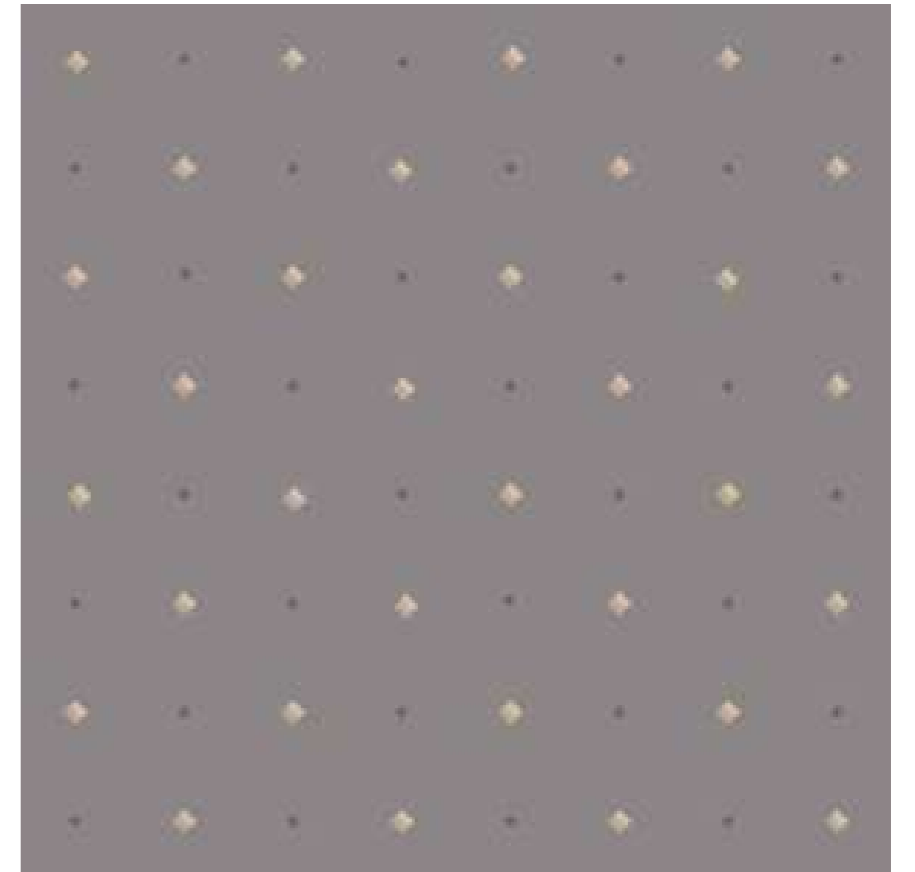
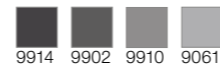




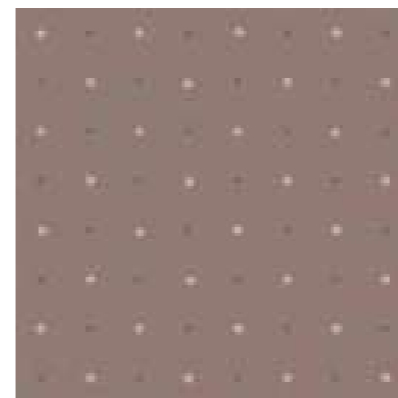
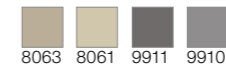
**QS107tile - 6**  
60 x 60 cm, critical cut



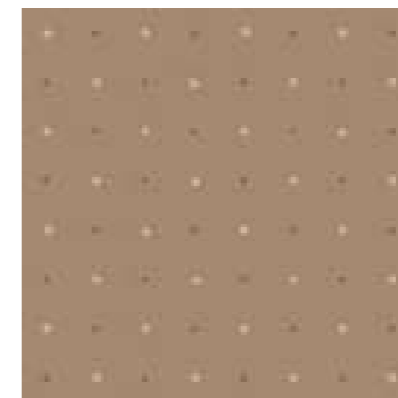
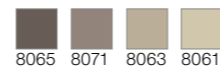
**QS107tile - 1**  
60 x 60 cm, critical cut



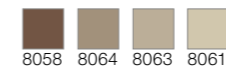
**QS107tile - 2**  
60 x 60 cm, critical cut



**QS107tile - 3**  
60 x 60 cm, critical cut



**QS107tile - 5**  
60 x 60 cm, critical cut

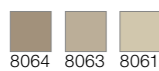


**QS107tile - 4**  
60 x 60 cm, critical cut

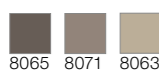




**QS106tile - 4**  
60 × 60 cm, critical cut



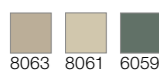
**QS106tile - 3**  
60 × 60 cm, critical cut



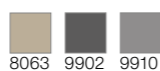
**QS106tile - 5**  
60 × 60 cm, critical cut



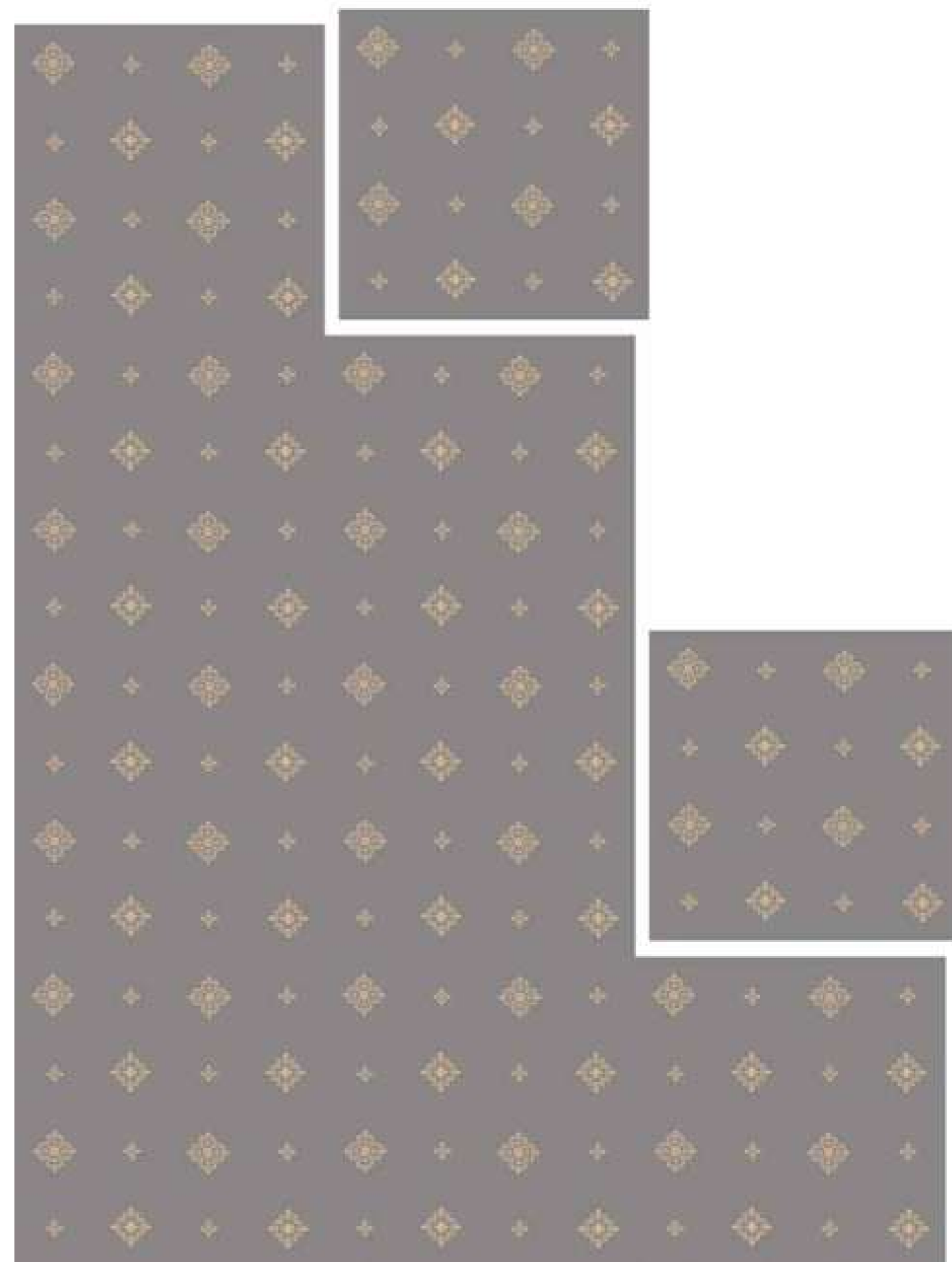
**QS106tile - 6**  
60 × 60 cm, critical cut



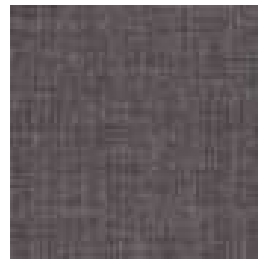
**QS106tile - 1**  
60 × 60 cm, critical cut



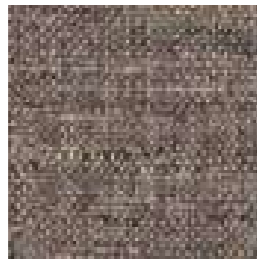
**QS106tile - 2**  
60 × 60 cm, critical cut



MODERN tiles & planks



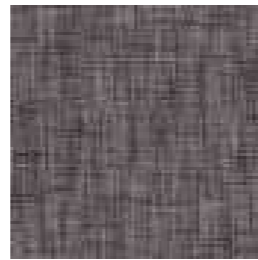
QS110tile - 1



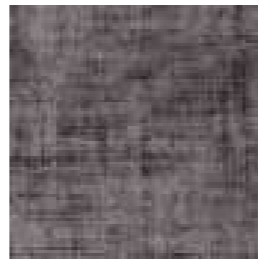
QS111tile - 1



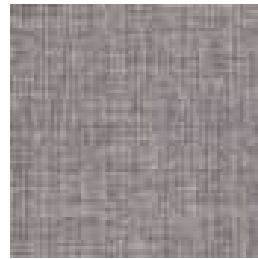
QS112tile - 1



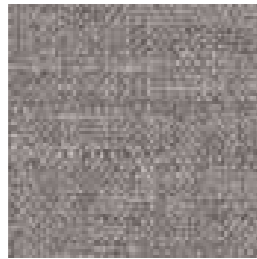
QS113tile - 1



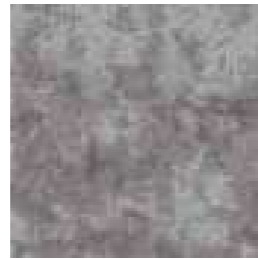
QS114tile - 1



QS110tile - 2



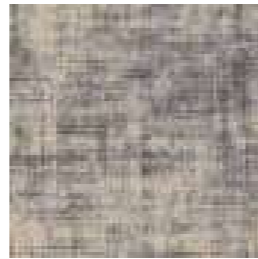
QS111tile - 2



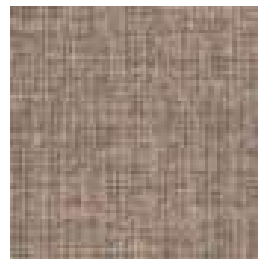
QS112tile - 2



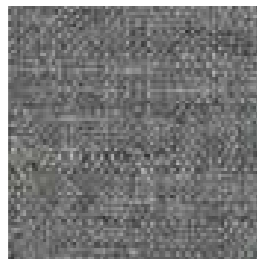
QS113tile - 2



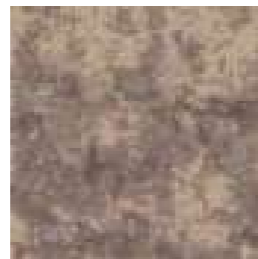
QS114tile - 2



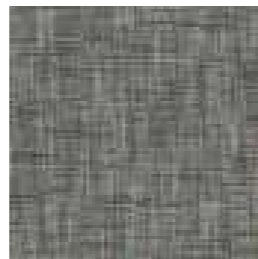
QS110tile - 3



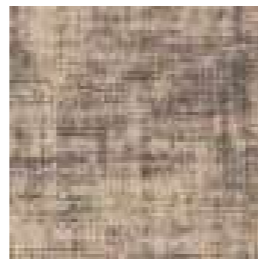
QS111tile - 3



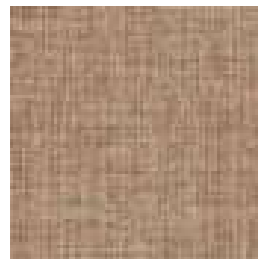
QS112tile - 3



QS113tile - 3



QS114tile - 3



QS110tile - 4



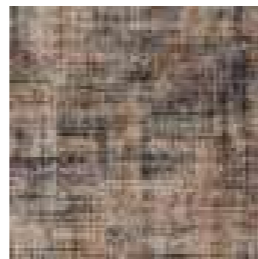
QS111tile - 4



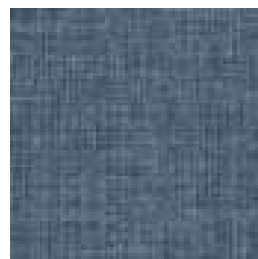
QS112tile - 4



QS113tile - 4



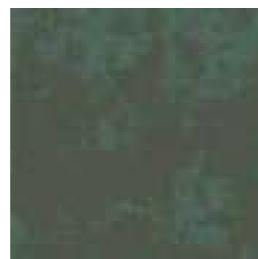
QS114tile - 4



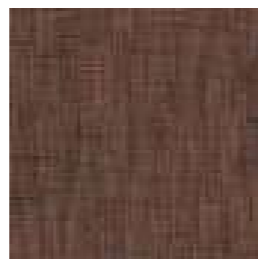
QS110tile - 5



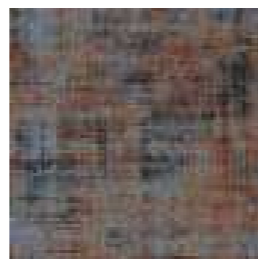
QS111tile - 5



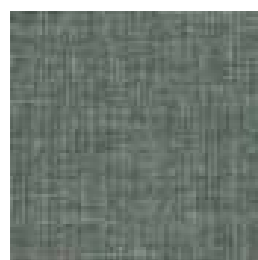
QS112tile - 5



QS113tile - 5



QS114tile - 5



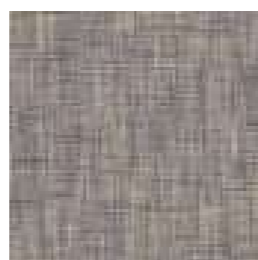
QS110tile - 6



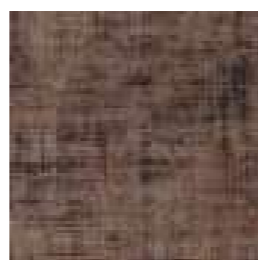
QS111tile - 6



QS112tile - 6



QS113tile - 6

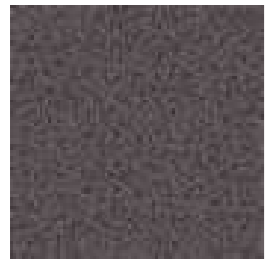


QS114tile - 6



QS112tile - 2

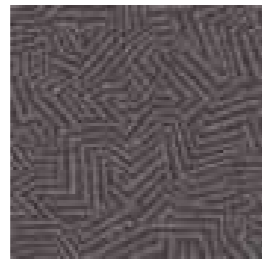
**TIMELESS** tiles & planks



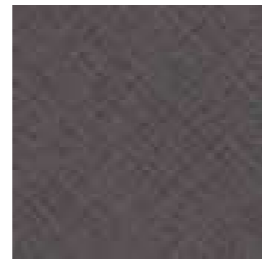
QS115tile - 1



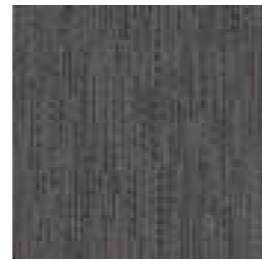
QS116tile - 1



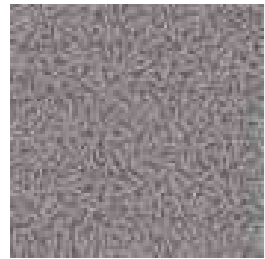
QS117tile - 1



QS118tile - 1



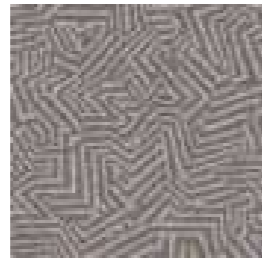
QS119tile - 1



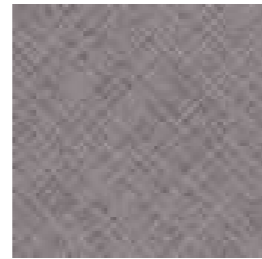
QS115tile - 2



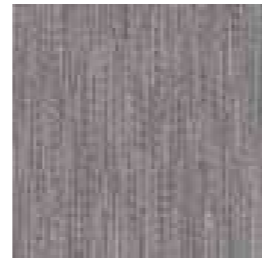
QS116tile - 2



QS117tile - 2



QS118tile - 2



QS119tile - 2



QS115tile - 3



QS116tile - 3



QS117tile - 3



QS118tile - 3



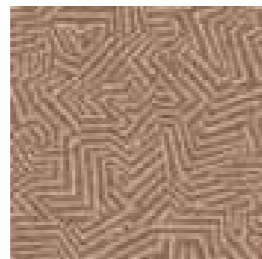
QS119tile - 3



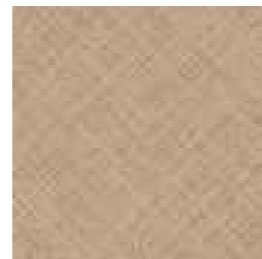
QS115tile - 4



QS116tile - 4



QS117tile - 4



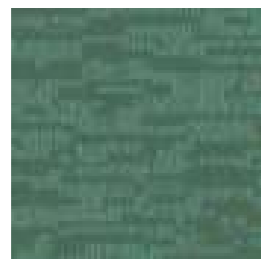
QS118tile - 4



QS119tile - 4



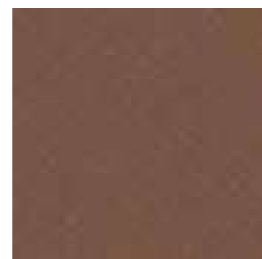
QS115tile - 5



QS116tile - 5



QS117tile - 5



QS118tile - 5



QS119tile - 5



QS115tile - 6



QS116tile - 6



QS117tile - 6



QS118tile - 6

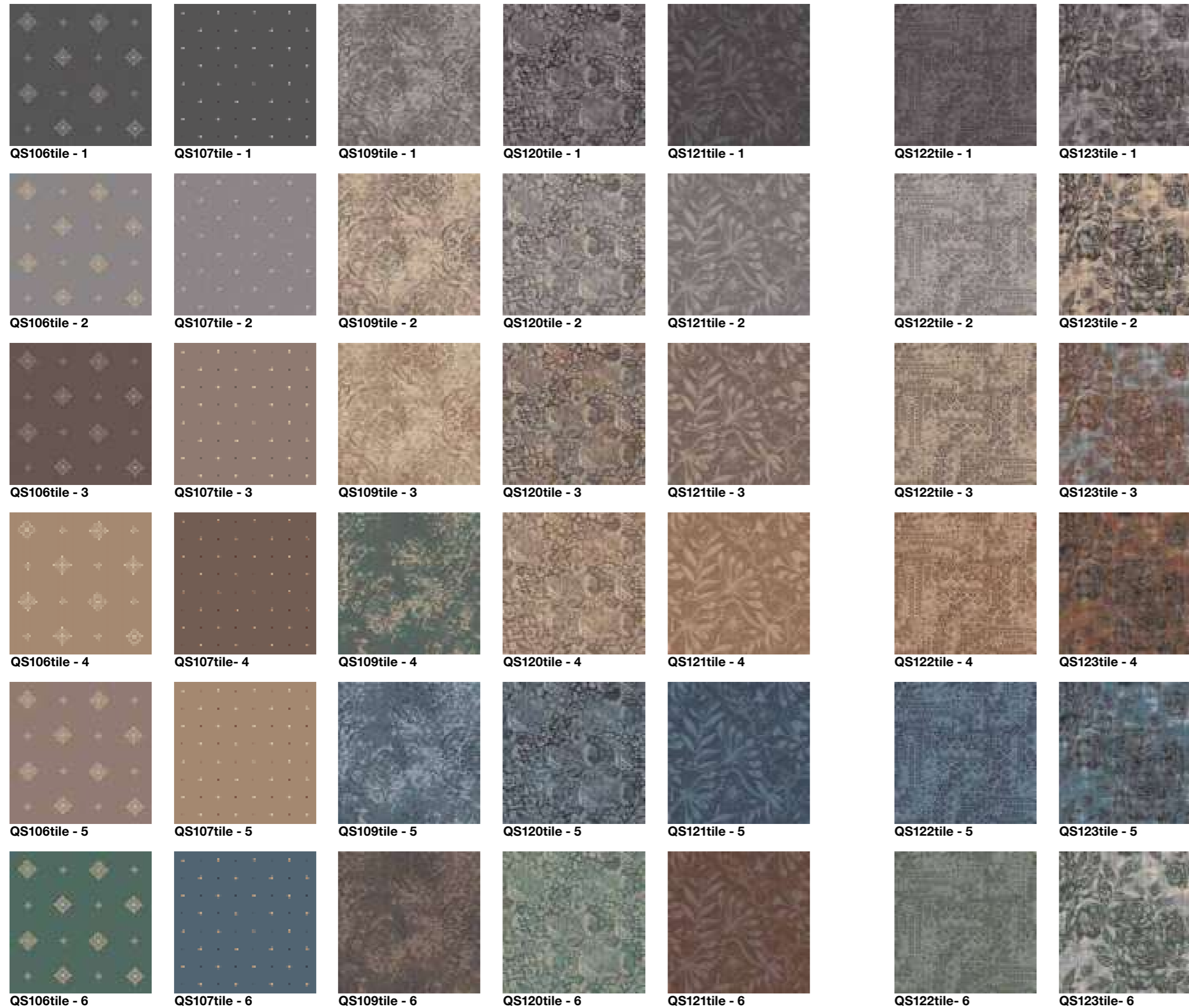


QS119tile - 6



QS119tile - 3

CLASSIC tiles & planks



Colours



Please note that colours in this printed brochure are approximate. For correct colours please refer to our colour samples.

## Data sheet

### Arcade Spezial Easy Lift 2,5 DC 800 Easy Lift 2,5

Status: 16.05.2024

<b>delivery form</b>	rolls tiles	400 cm wide
<b>construction</b>	tufted cut pile non heatset	1/10" gauge
<b>pile material</b>		100 % Polyamide 6
<b>primary backing</b>	non-woven	75 % PES / 25 % PA
<b>secondary backing</b>	Easy-Lift (heavy backing), non-woven (needled, thermal fixed)	100 % PES, 120 g/m <sup>2</sup>
<b>pattern</b>	digital paste printing	Chromojet
<b>total weight</b>	ISO 8543	ca. 2764 g/m <sup>2</sup>
<b>total thickness</b>	ISO 1765	ca. 6,5 mm
<b>pile thickness</b>	ISO 1766	ca. 4,1 mm
<b>total pile yarn weight</b>		ca. 770 g/m <sup>2</sup>
<b>pile density</b>	ISO 8543	ca. 0,12 g/cm <sup>3</sup>
<b>number of tufts</b>	ISO 1763	ca. 316000/m <sup>2</sup>
<b>CE-number</b>		1658-CPR-3163
<b>DoP-number</b>		0004
<b>Prodis-licence-number</b>		7CF81CC0



#### use class

33 - commercial: heavy  
DIN EN 1307 | ISO 10361



#### luxury class

LC 2  
DIN EN 1307 | DIN EN 8543

#### stair suitability

not suitable  
DIN EN 1307 | DIN EN ISO 12951



#### castor chair suitability

intensive  
DIN EN 1307 | DIN EN ISO 4918



#### colour fastness to light

≥ 5  
DIN EN 1307 | DIN EN ISO 105-B02

#### colour fastness to water

≥ 4  
DIN EN 1307 | DIN EN ISO 105-E01

#### colour fastness to rubbing

≥ 3-4  
DIN EN 1307 | DIN EN ISO 105-X12



#### resistance of cut edges

DIN EN ISO 10833



#### slip resistance μ

≥ 0,30  
DIN EN 14041 | DIN EN 13893



#### thermal resistance

ca. 0,1 m<sup>2</sup>K/W  
DIN EN 12667



#### impact sound reduction ΔLw

ca. 26 dB  
DIN EN ISO 717-2 | DIN EN ISO 10140-3



#### sound absorption αw

ca. 0,2  
DIN EN ISO 354



#### electrical behaviour

body voltage ≤ 2 kV  
ISO 6356



#### reaction to fire

CF-s1  
DIN EN 13501-1 | DIN EN ISO 9239-1, 11925-1



We reserve the right to make technical changes that serve to improve quality. In rare cases, permanent shading may occur in velour carpets without impairing the usability. The cause of this is not due to the material or construction. Therefore, no warranty can be assumed for this. Halmond's carpets and rugs must be installed in accordance with the respective Halmond installation recommendations and the state of the art. All information is based on current knowledge and experience. They can only be general information without guarantee of properties, as we have no influence on the construction site conditions and processing. Due to the wide range of possible influences when using our products, they do not exempt the installer from carrying out his own tests and trials. Regular maintenance cleaning is decisive for the cleanliness, value retention and good appearance of the floor covering.

## Data sheet

### AP 1050 Easy Lift 2,5 DC 1050 Easy Lift 2,5

Status: 17.06.2024

<b>delivery form</b>	rolls tiles	400 cm wide
<b>construction</b>	tufted cut pile	1/10" gauge
<b>pile material</b>		100 % Polyamide 6
<b>primary backing</b>	non-woven	75 % PES / 25 % PA
<b>secondary backing</b>	Easy-Lift (heavy backing), non-woven (needled, thermal fixed)	100 % PES, 120 g/m <sup>2</sup>
<b>pattern</b>	digital paste printing	Chromojet
<b>total weight</b>	ISO 8543	ca. 3085 g/m <sup>2</sup>
<b>total thickness</b>	ISO 1765	ca. 7,5 mm
<b>pile thickness</b>	ISO 1766	ca. 5 mm
<b>total pile yarn weight</b>		ca. 1050 g/m <sup>2</sup>
<b>pile density</b>	ISO 8543	ca. 0,14 g/cm <sup>3</sup>
<b>number of tufts</b>	ISO 1763	ca. 185650/m <sup>2</sup>
<b>CE-number</b>		1658-CPR-3163
<b>DoP-number</b>		0004
<b>Prodis-licence-number</b>		7SCA6F1A



#### use class

33 - commercial: heavy  
DIN EN 1307 | ISO 10361



#### luxury class

LC 3  
DIN EN 1307 | DIN EN 8543

#### stair suitability

not suitable  
DIN EN 1307 | DIN EN ISO 12951



#### castor chair suitability

intensive  
DIN EN 1307 | DIN EN ISO 4918



#### colour fastness to light

≥ 5  
DIN EN 1307 | DIN EN ISO 105-B02

#### colour fastness to water

≥ 4  
DIN EN 1307 | DIN EN ISO 105-E01

#### colour fastness to rubbing

≥ 3-4  
DIN EN 1307 | DIN EN ISO 105-X12



#### resistance of cut edges

DIN EN ISO 10833



#### slip resistance μ

≥ 0,30  
DIN EN 14041 | DIN EN 13893



#### thermal resistance

ca. 0,11 m<sup>2</sup>K/W  
DIN EN 12667



#### impact sound reduction ΔLw

ca. 30 dB  
DIN EN ISO 717-2 | DIN EN ISO 10140-3



#### sound absorption αw

ca. 0,2  
DIN EN ISO 354



#### electrical behaviour

body voltage ≤ 8 kV  
ISO 6356



#### reaction to fire

CF-s1  
DIN EN 13501-1 | DIN EN ISO 9239-1, 11925-1



We reserve the right to make technical changes that serve to improve quality. In rare cases, permanent shading may occur in velour carpets without impairing the usability. The cause of this is not due to the material or construction. Therefore, no warranty can be assumed for this. Halmond's carpets and rugs must be installed in accordance with the respective Halmond installation recommendations and the state of the art. All information is based on current knowledge and experience. They can only be general information without guarantee of properties, as we have no influence on the construction site conditions and processing. Due to the wide range of possible influences when using our products, they do not exempt the installer from carrying out his own tests and trials. Regular maintenance cleaning is decisive for the cleanliness, value retention and good appearance of the floor covering.

# TILE PRODUCT GUIDE



Halbmond Teppichwerke GmbH  
Brückenstraße 1  
D-08606 Oelsnitz, Germany  
Tel.: +49 37421-42-0  
Fax: +49 37421-42-571  
info@halbmond.de  
www.halbmond.de



HTW DESIGN CARPET  
Tel.: +49 5221-1779-0  
info@htw-designcarpet.de  
www.htw-designcarpet.de