



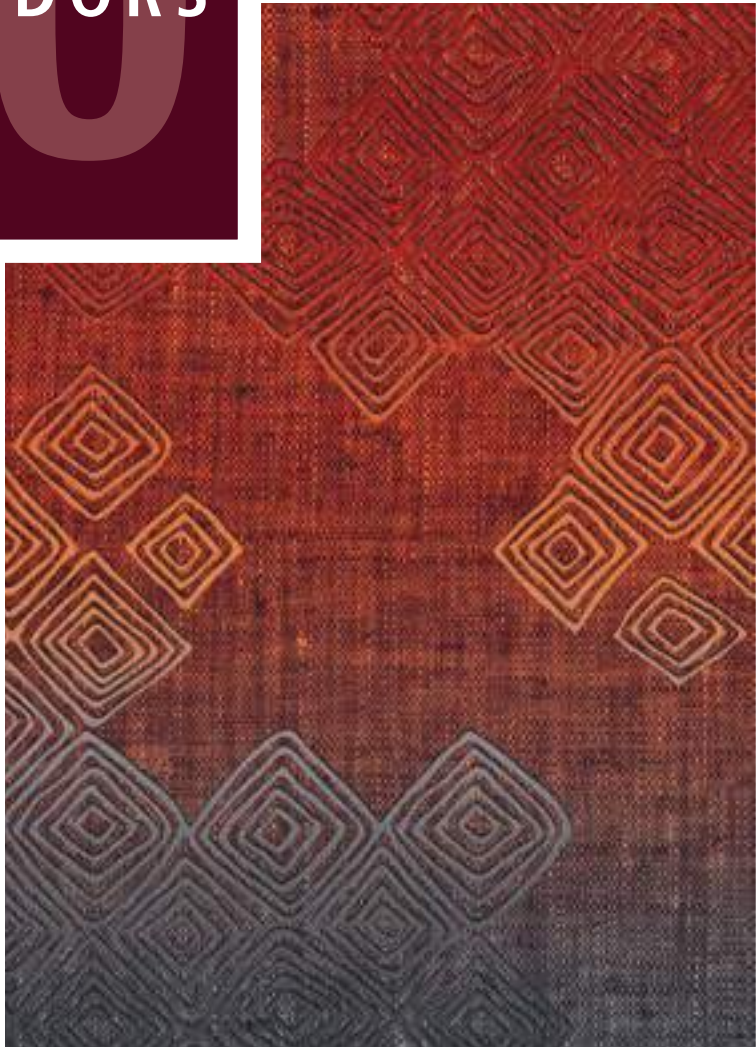
corridor

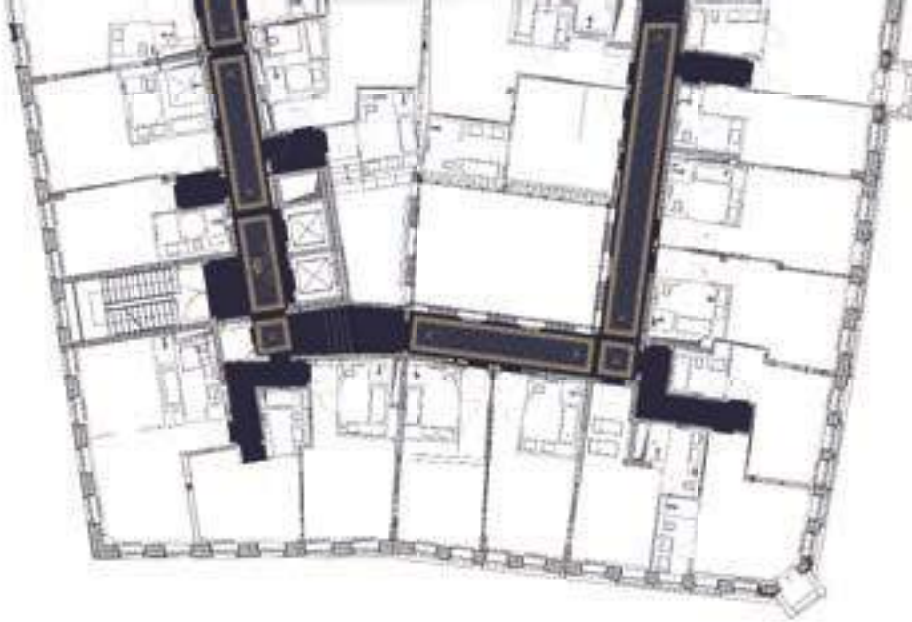
CONCEPTS





50
CORRIDORS





de Ankommen und sich wohlfühlen.

Flure, Entrées und öffentliche Bereiche vermitteln einen ersten Eindruck von Ihrem Ambiente. Das Wohlbefinden der Gäste spielt dabei eine entscheidende Rolle. Innovative, hochwertige Teppichböden wirken hier positiv in vielerlei Hinsicht: haptisch, optisch und akustisch. Sie müssen gerade im Korridorbereich eine Vielzahl von Anforderungen erfüllen. Komfort, Belastbarkeit, Ergonomie sowie gute Tritt- und Raumschallwerte sind die entscheidenden Vorteile.

Teppichboden hat aber auch eine enorme visuelle Ausdruckskraft. Mit ihm lassen sich einzigartige Themen- und Erlebniswelten auf dem Boden verwirklichen. Flure müssen nicht eintönig sein – eine kreative Gestaltung wird zum Blickfang und unterstreicht die Besonderheit Ihres Hauses. Alles ist möglich: ob elegante Muster, opulente Inszenierungen, modern-sachliches oder expressives Design sowie Holz- und Steinoptik.

Unser kompetentes Designteam entwickelt in Zusammenarbeit mit Inneneinrichtern, Architekten und Eigentümern einzigartige Lösungen für jedes Objekt. Dabei wird die Teppichbodengestaltung exakt auf den Bauplan des Gebäudes abgestimmt – ganz individuell.

Lassen Sie sich in dieser Broschüre von der großen Bandbreite an Möglichkeiten inspirieren.

en Arrive and feel good straight away.

Hallways, entrances and public areas give the first impression of your ambience. Here the wellbeing of your guests plays a decisive role. Innovative, high-quality carpets exert positive effects here in several senses – haptically, visually and acoustically. In corridor areas these carpets must satisfy many different requirements, and the decisive factors are comfort, durability and ergonomics, plus the footfall and room noise levels.

But carpets also have an immense expressive force visually. Through them, unique themes and worlds of experience play out on the floor. Corridors need not be monotonous, and a more creative design will catch the eye and lend your establishment a special touch. Anything is possible – from elegant patterns to opulent mise-en-scènes, sober modernism or expressive design, or even a wood or stone look.

Working together with interior designers, architects and proprietors, our competent design team develops unique solutions for every property. We design the carpeting exactly to the layout of the building, on a completely bespoke basis.

Let the wide range of possibilities in this brochure inspire you.

fr Arriver, se sentir bien. Ce sont d'emblée les couloirs, les entrées et les espaces communs qui donnent une première impression de l'atmosphère générale qui règne chez vous. Et le bien-être de vos hôtes joue un rôle décisif. Pour cela, des moquettes innovantes et de qualité ont un effet positif important à plusieurs égards, du point de vue du contact, du visuel et de l'acoustique. Dans les couloirs, elles doivent satisfaire à de nombreuses exigences. Confort, résistance, ergonomie et la capacité de bien absorber les pas et les sons sont des avantages décisifs.

Les moquettes ont également un énorme impact visuel. Elle permettent de créer des univers thématiques et événementiels uniques sur le sol. Il est important que les couloirs ne soient pas monotones : un aménagement original attire le regard et souligne la particularité de votre lieu. Tout est possible : aussi bien des motifs élégants que des mises en scène opulentes, un design moderne et sobre ou au contraire riche en éléments, même l'aspect du bois ou de la pierre.

Notre équipe compétente de designers développe des solutions uniques pour chaque projet, en collaboration avec des décorateurs d'intérieur, des architectes et des propriétaires. Chaque moquette est adaptée précisément à la structure du bâtiment, chaque solution est entièrement personnalisée.

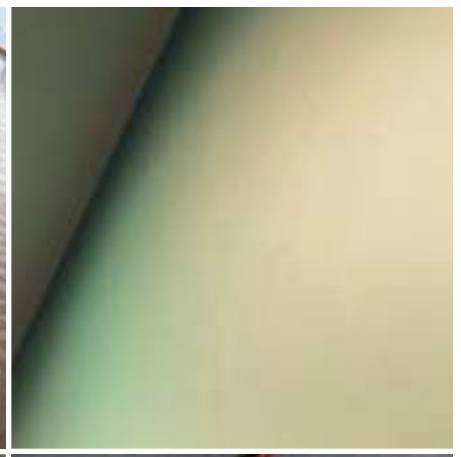
Laissez-vous inspirer par le large éventail de possibilités présenté dans cette brochure.



26

REFERENCES





HOTELS

Mandarin Oriental

München





Objekt | PrOject

Mandarin Oriental Munich

Größe | Size

48 Zimmer | 48 rooms
25 Suiten | 25 suites

www.mandarinoriental.com

tePPIchbOden | cArPet

Menge | Quantity

856 m²

Qualität | Quality

DC Wool 1850

desIgnkOnzePt | desIgn cOncePt

Fünf-Sterne-Luxus in der malerischen Altstadt Münchens. Das zeitlose, elegante Design des Interieurs hinterlässt einen bleibenden Eindruck.

Five-star luxury in Munich's picturesque Old Town. The timeless, elegant interior design leaves a lasting impression.





Objekt | PrOject

the niu Air

Anlass | Occasion

Neubau | New building

www.theniu.de

tePPIchbOden | cArPet

Menge | Quantity

3420 m² Flure / Corridors

5480 m² Zimmer / rooms

Qualität | Quality

DC 1050 ZR

deslgnkOnzePt | deslgn cOncePt

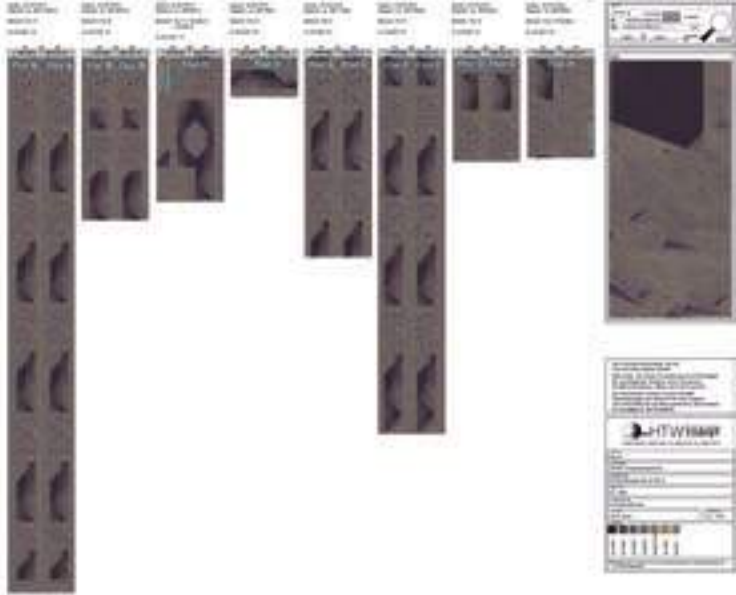
Das the niu „Air“ ist eine namentliche Hommage an die Zeit der imposanten Zeppeline.

The niu „Air“ is named to commemorate the era of airships and dirigibles.





HOTELS
the niu Air
Frankfurt am Main



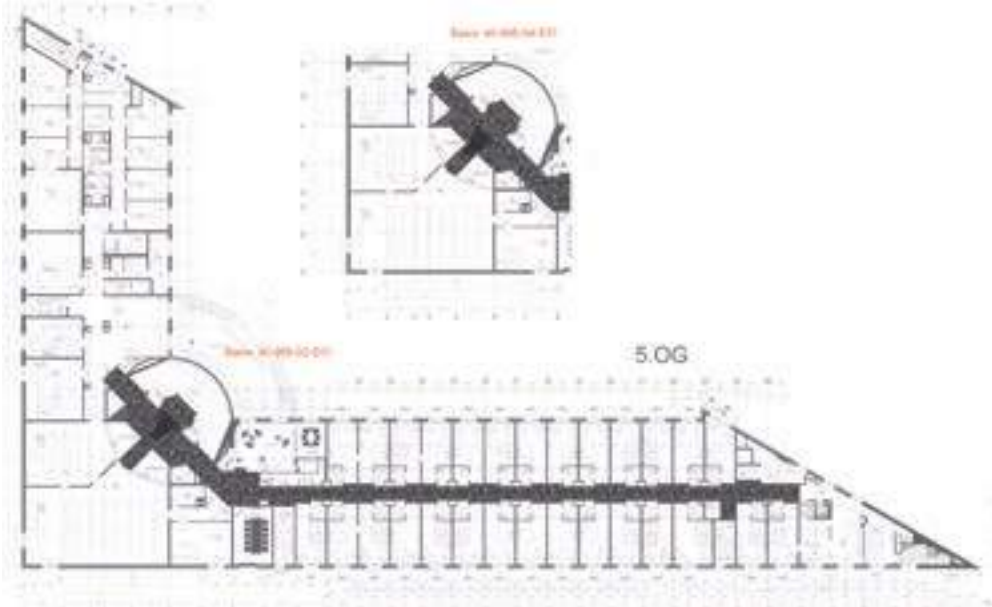
HOTELS

DORINT

Dortmund

Dorint

An den Westfalenhallen
Dortmund



Objekt | PrOjekt

Dorint Hotel Dortmund

Anlass | Occasion

Renovierung | Renovation

Größe | Size

216 Zimmer | 216 rooms

5 Suiten | 5 suites

www.dorint.de

tePPlchbOden | cArPet

Menge | Quantity

473 m²

Qualität | Quality

DC 900

deslgnkOnzePt | deslgn cOncePt

Designthema ist hier die Steinkohleförderung, die dazu beitrug, das Ruhrgebiet zum wirtschaftlichen und kulturellen Zentrum Westfalens zu machen. Dortmund gilt hier als Ruhrmetropole mit spannender Industriekultur.

Here the design theme is coal mining, which contributed to making the Ruhr into the economic and cultural centre of Westphalia. Dortmund is regarded as a Ruhr metropolis with an exciting industrial culture.



85-1701	85-1702	85-1703	85-1704	85-1705	85-1706	85-1707	85-1708

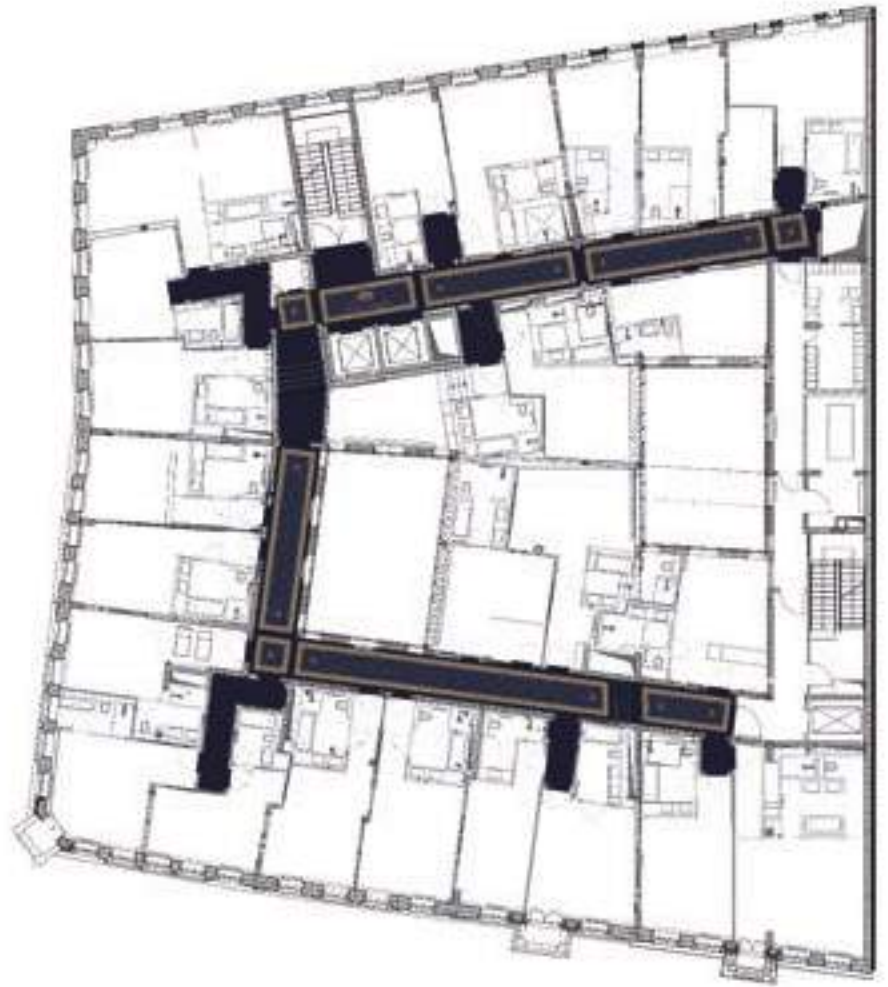
HITVINAP

Technical specifications and product details.

HOTELS

Hotel Suitess

Dresden



HOTEL SUITESS





Objekt | Project

Hotel SuiteSS
5-Sterne-Superior-Hotel

Anlass | Occasion
Erweiterung | Expansion

Größe | Size
78 Zimmer & Suiten | 78 rooms & suites
www.suiteSS-hotel.com

tePPIchbOden | cArPet

Menge | Quantity
1114 m² Flure / Corridors
832 m² Zimmer / rooms

Qualität | Quality
DC 1402

desIgnkOnzePt | desIgn cOncePt

Die Gestaltung verbindet den modernen 5-Sterne Standard mit dem luxuriösen Ambiente vergangener Grand-Hotel Zeiten.

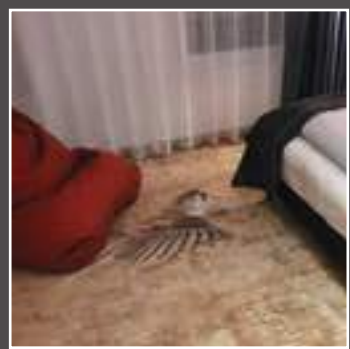
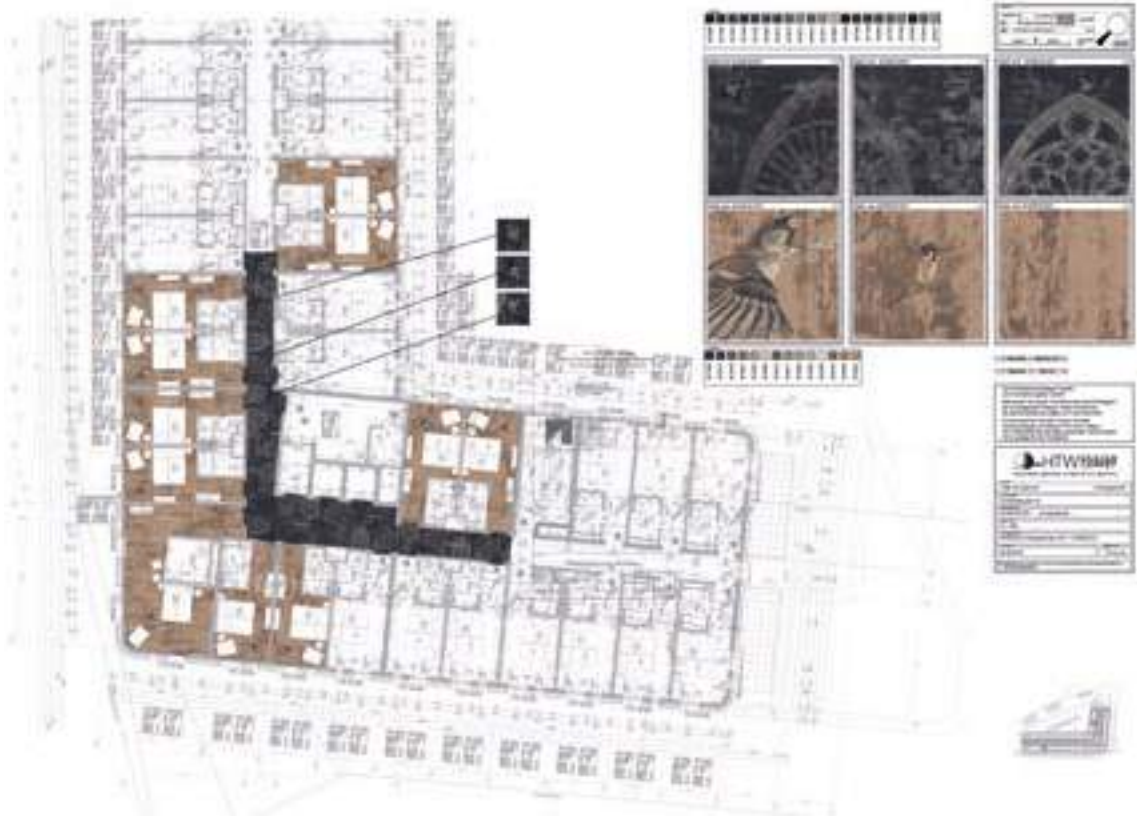
The design combines the modern 5-star standard with the luxurious ambience of grand hotels of the past.



HOTELS

the niu Sparrow

Regensburg



Objekt | PrOject

the niu Sparrow

Anlass | Occasion

Neubau | New building

www.theniu.de

tePPlchbOden | cArPet

Menge | Quantity

1050 m² Flure / Corridors

5000 m² Zimmer / rooms

Qualität | Quality

DC1050

deslgnkOnzePt | deslgn cOncePt

Der Name "Sparrow" (übersetzt: Spatz) ist eine Hommage an die berühmten Regensburger Domspatzen und den liebenswerten Kosenamen Spatz.

The name „Sparrow“ (German: Spatz) pays tribute to the famous Regensburg Cathedral Choir and the lovable nickname sparrow.

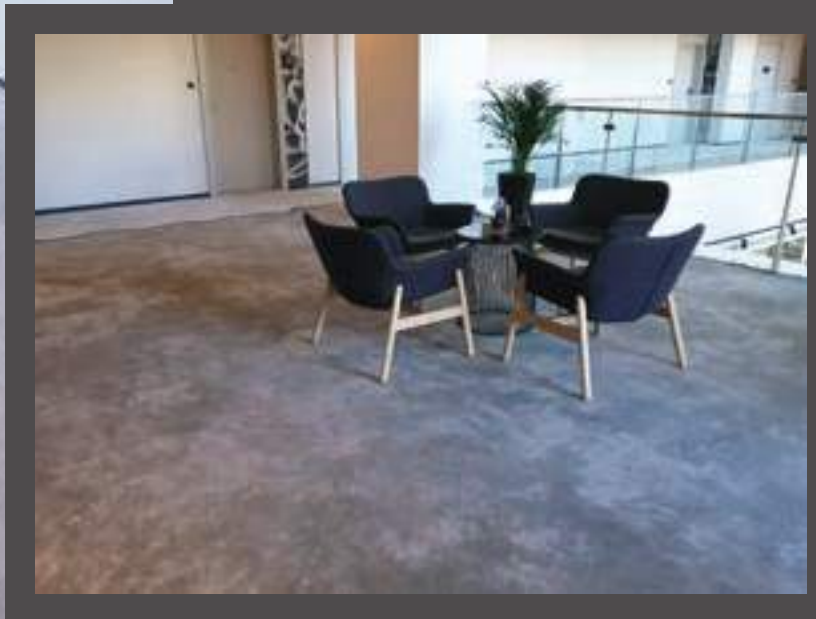
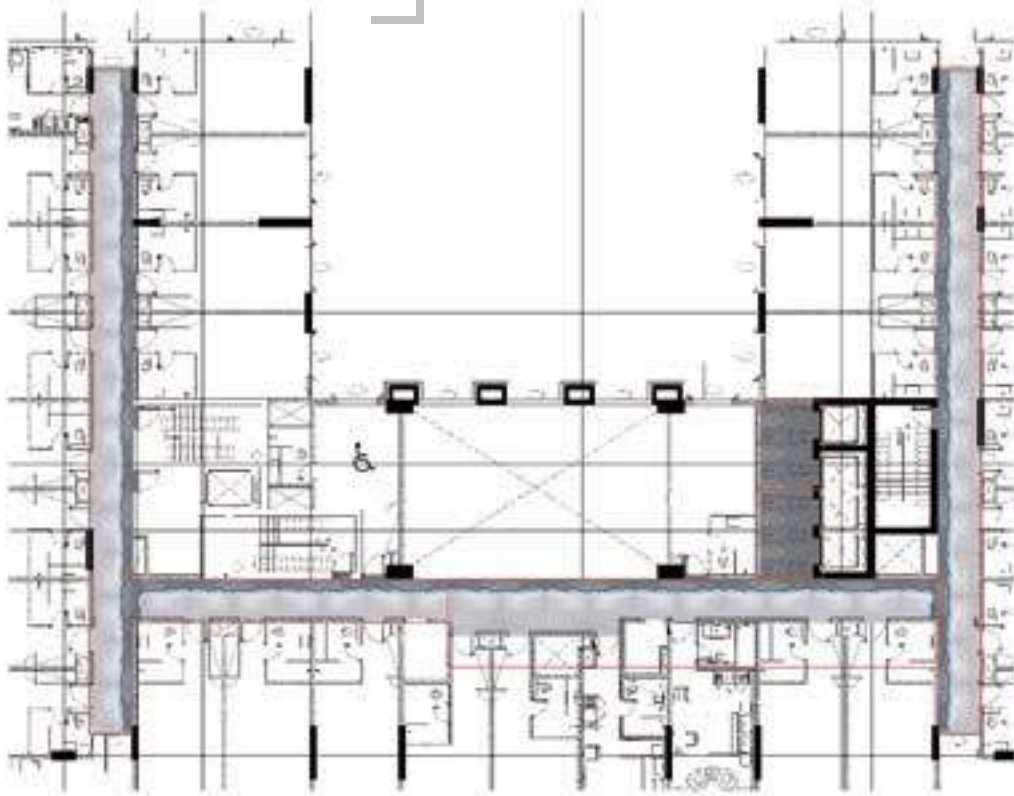


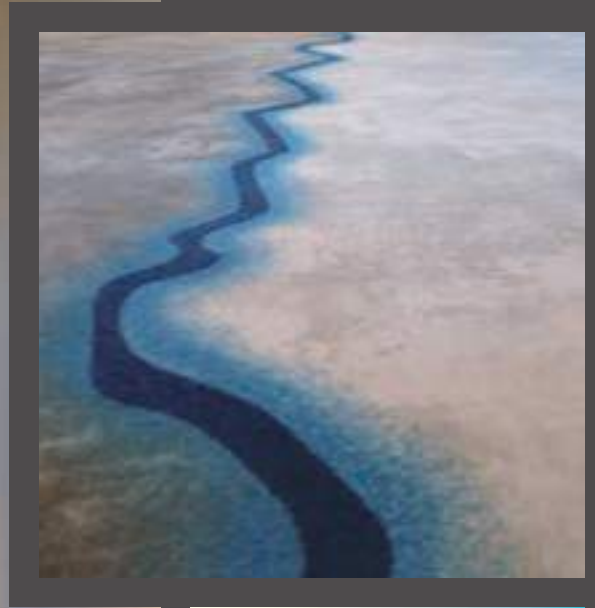
HOTELS

The Manor by JA

Dubai

MANOR





Objekt | PrOject

The Manor Hotel by JA

Anlass | Occasion
Neubau | New building

Größe | Size
233 Zimmer | 233 rooms

www.jaresortshotels.com/dubai/the-manor-by-ja

tePPIchbOden | cArPet

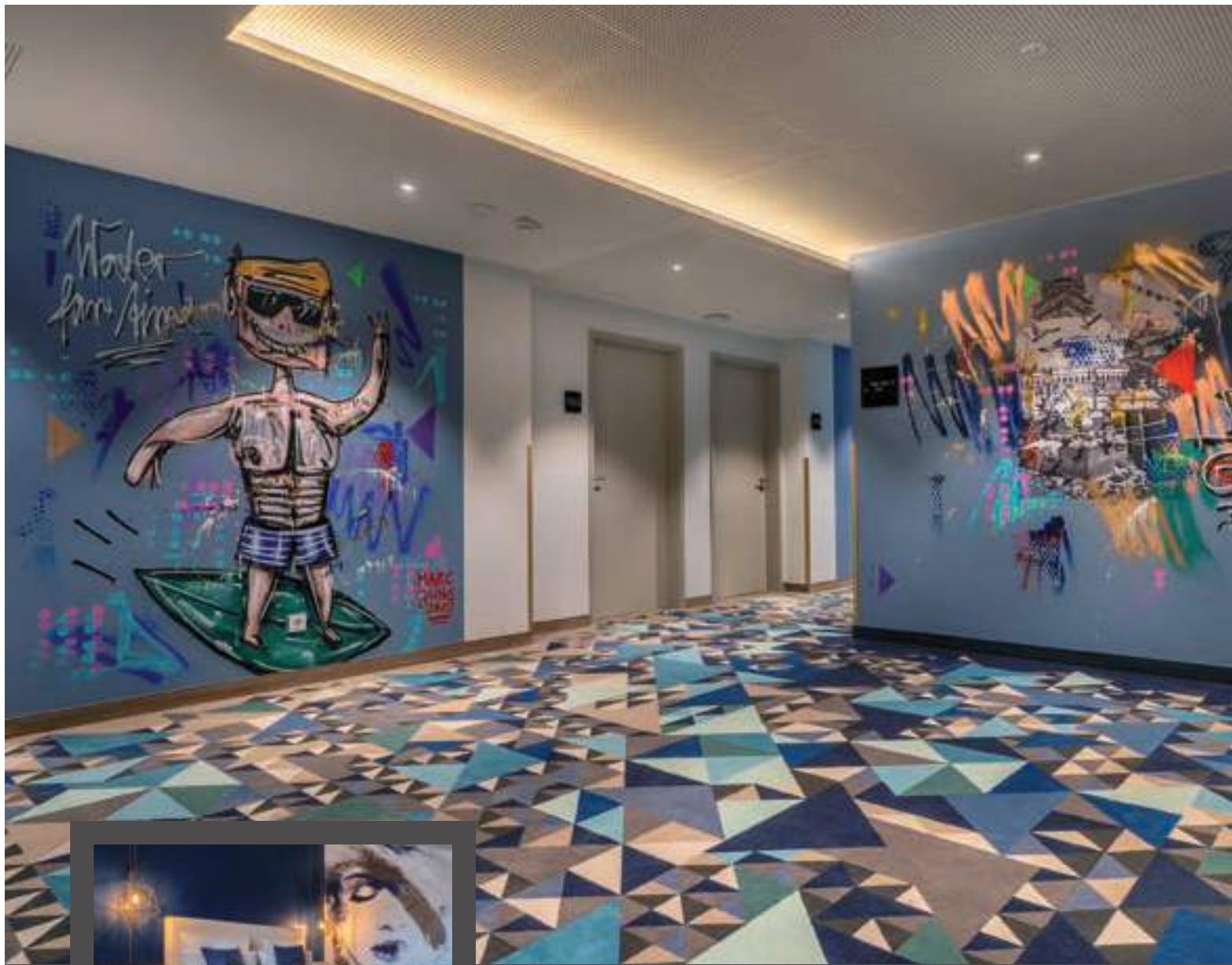
Menge | Quantity
1680 m²

Qualität | Quality
AP 900 FZ 550g

desIgnkOnzePt | desIgn cOncePt

Elegantes Hotel mit einzigartigem Design.

Elegant hotel with unique design.



Objekt | PrOject

the niu Ridge

Anlass | Occasion
Neubau | New building

www.theniu.de

tePPIchbOden | cArPet

Menge | Quantity

1040 m² Flure / Corridors
3850 m² Zimmer / rooms

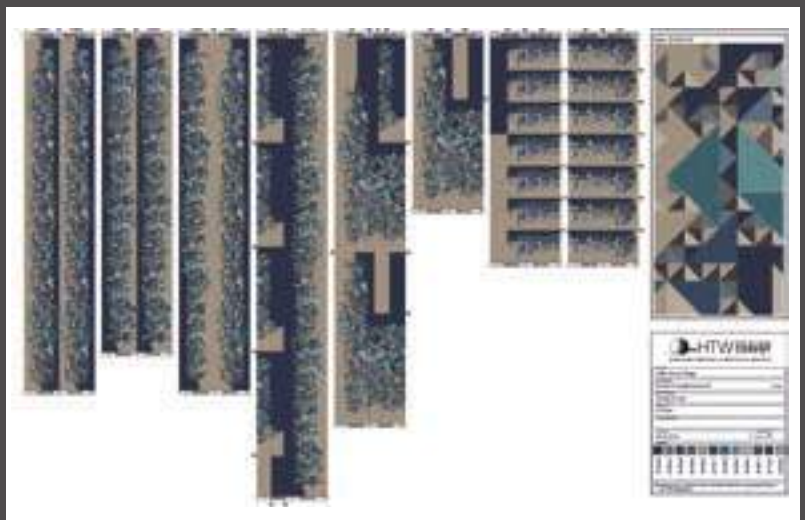
Qualität | Quality

DC 1050 ZR

deslgnkOnzePt | deslgn cOncePt

Ridge bedeutet Kante/ Ecke und erinnert an die Salzgewinnung in Halle. Die polygonalen Formen der Salzkristalle wurden im the niu Ridge kreativ in Szene gesetzt.

The niu Ridge is named for the ridges of salt production, which is a key industry in Halle. The polygon formation of the salt crystals has been creatively reimaged at the niu Ridge.



the
niu

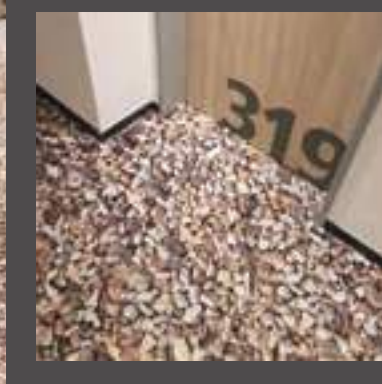
HOTELS

the niu Ridge

Halle



HOTELS
Wonnemar
 Wismar



Objekt | PrOject

WONNEMAR Resort-Hotel

Anlass | Occasion

Neubau | New building

www.wonnemar-resorts.de

tePPIchbOden | cArPet

Menge | Quantity

550 m²

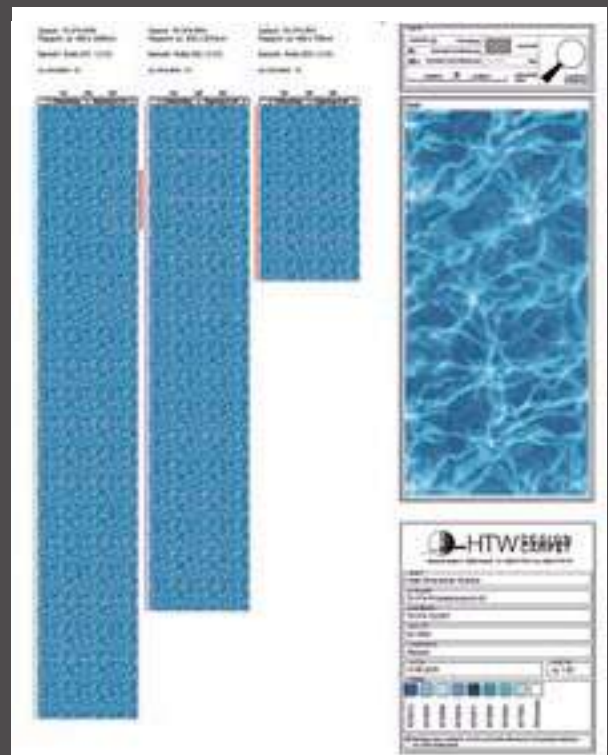
Qualität | Quality

DC 1052

deslgnkOnzePt | deslgn cOncePt

Familienfreundliches Resort-Hotel mit großem Spa, Erlebnis- und Spaßbad Bereich. Die Bodengestaltung nimmt Bezug auf die einzigartige Natur mit Meer, Sand und Strand.

A family-friendly resort hotel with a large spa, adventure and play pool area. The floor design makes reference to the unique natural surroundings with the sea, sand and beaches.





Objekt | PrOject

the niu Fury

Anlass | Occasion

Neubau | New building

www.theniu.de

tePPIchbOden | cArPet

Menge | Quantity

937 m² Flure / Corridors

3474 m² Zimmer / rooms

Qualität | Quality

DC 1050

deslgnkOnzePt | deslgn cOncePt

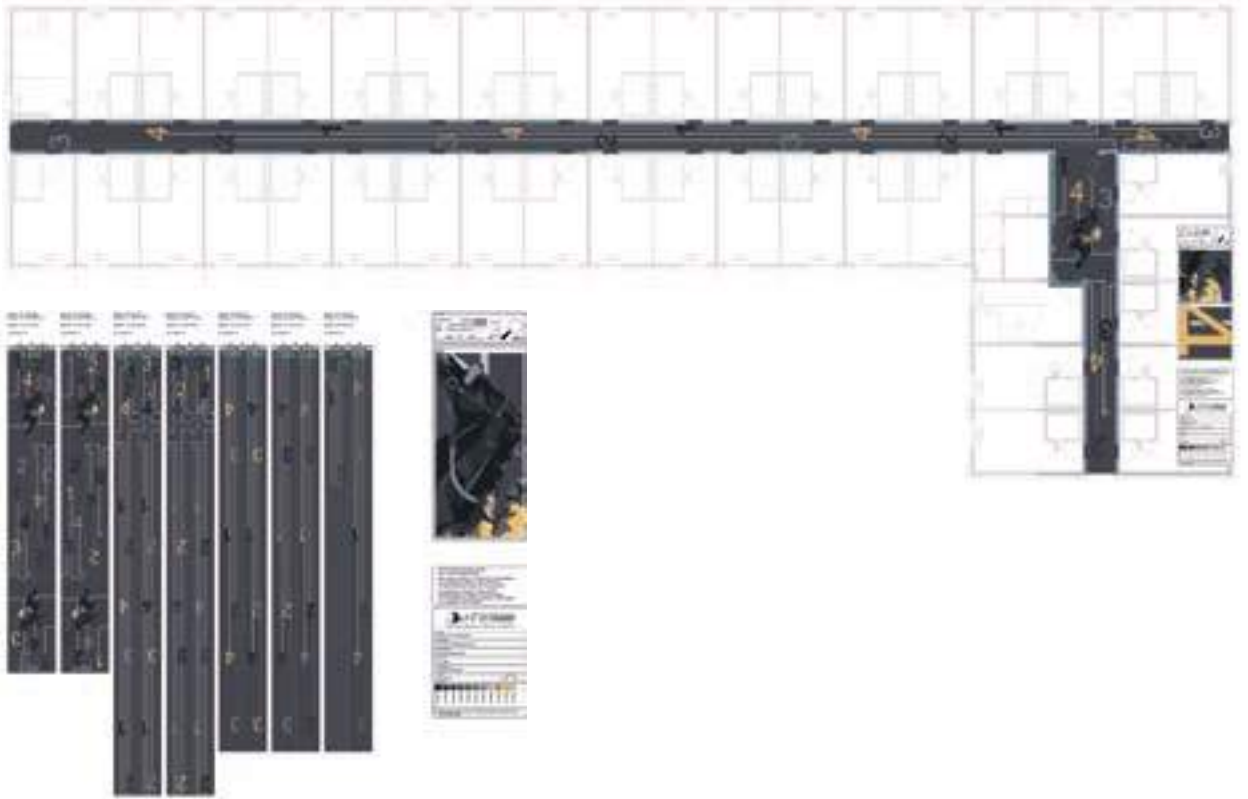
Der Name Fury ist eine Anspielung an die, nur einen Steinwurf entfernt liegende, traditionelle Galopprennbahn in München-Riem.

The name Fury is, of course, a reminder of the traditional horse racing track in Munich-Riem, which is just a hop and a skip away.





HOTELS
the niu Fury
Aschheim





Objekt | PrOject

Best Western Prisma

Anlass | Occasion
Neubau | New building

www.hotel-prisma.de

tePPlchbOden | cARPet

Menge | Quantity

330 m² Flure / Corridors
1990 m² Zimmer / rooms

Qualität | Quality
DC 900 ZR

designkOnzePt | design cOncePt

Die Grundfläche des Prismas findet sich in der Bodengestaltung des Restaurants wieder - mit Designs aus der Kollektion Shape & Create. Für die Gestaltung der Flure wurden Designs aus den Kollektionen Mega Tiles und Nightlife Flair kombiniert.

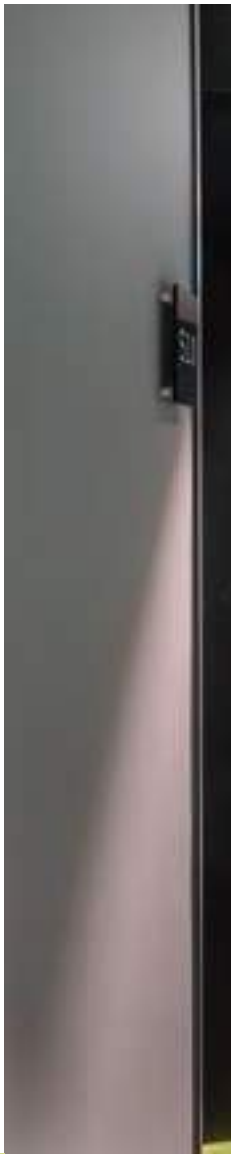
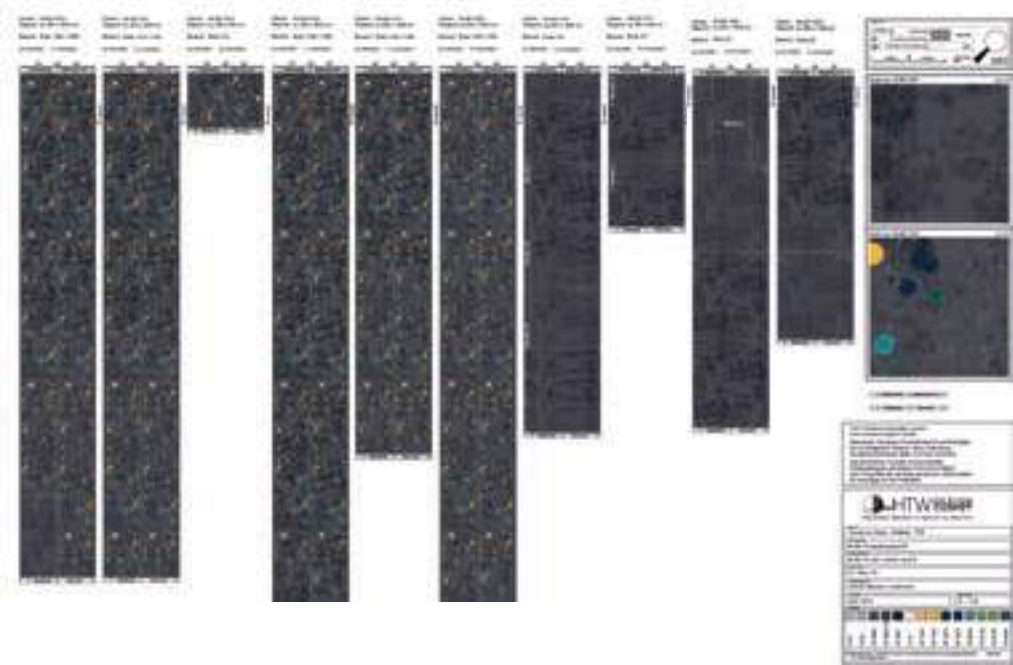
The base of the prism is reflected in the restaurant with designs from the Shape & Create collection. For the corridors, designs were combined from the Mega Tiles and Nightlife Flair collections.



HOTELS

the niu Charly

Frankfurt am Main





Objekt | PrOject

the niu Charly

Anlass | Occasion

Neubau | New building

www.theniu.de

tePPIchbOden | cArPet

Menge | Quantity

1215 m² Flure / Corridors

3520 m² Zimmer / rooms

Qualität | Quality

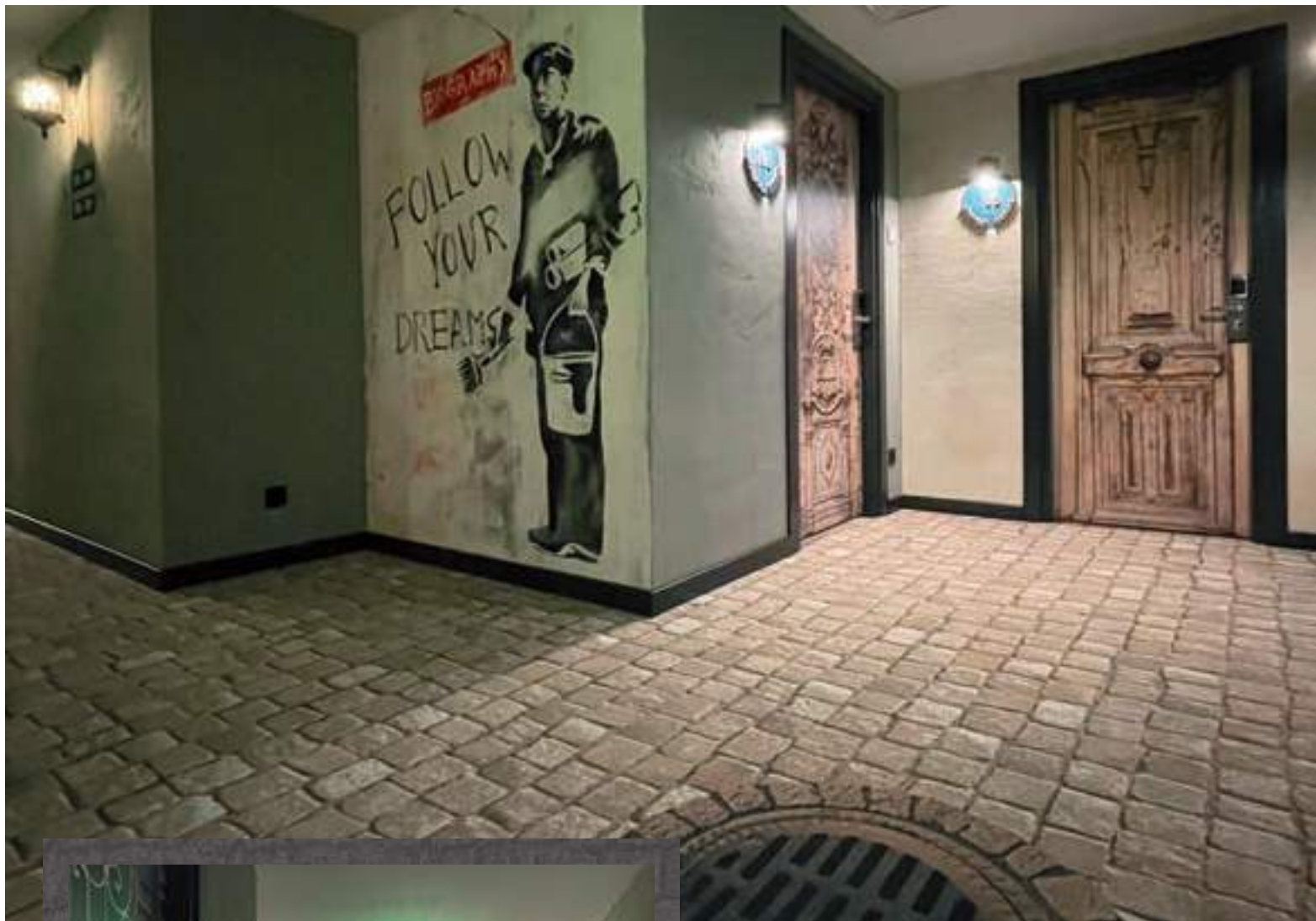
DC 1050 ZR

deslgnkOnzePt | deslgn cOncePt

Der Name Charly deutet die Nähe zum Karlsplatz an und ist ein Gruß an Frankfurts legendären Gründer: Karl, „den Großen“.

Charly gets its name from being close to the Karlsplatz and as shout-out to Frankfurt's founder, the legendary Charlemagne.





Objekt | PrOject

Kolkhi Biography

Anlass | Occasion

Renovierung | Renovation

tePPIchbOden | cArPet

Menge | Quantity

920 m²

Qualität | Quality

AP 930 S

deslgnKnzePt | deslgn cOncePt

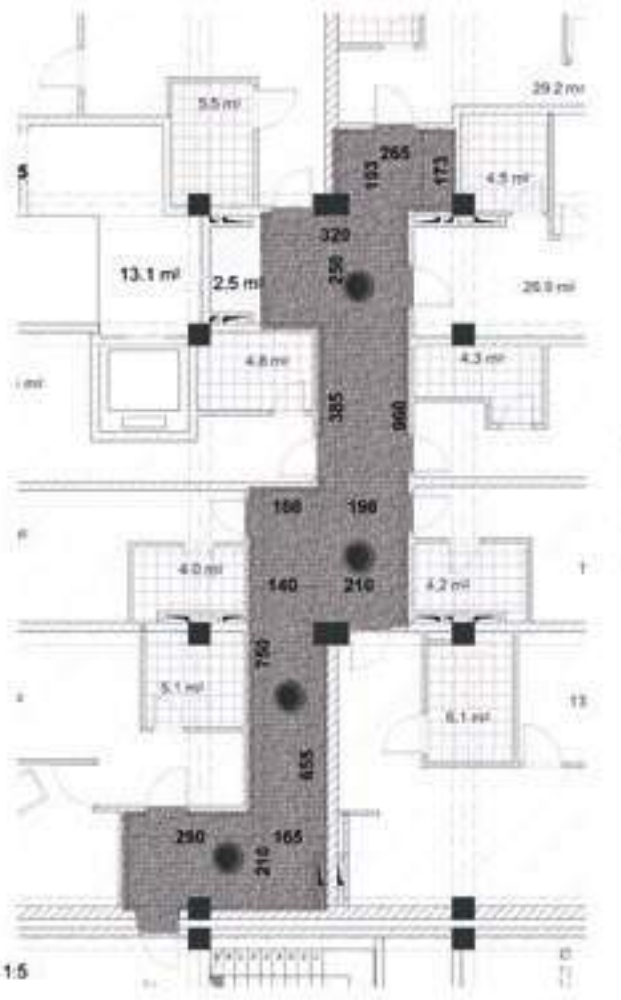
Passend zu der außergewöhnlichen Wandgestaltung wurde ein Streetart-Design aus der Kollektion Pure Elements kombiniert.

To go with the unusual wall design, a street-art design was combined from the Pure Elements collection.

HOTELS

Kolkhi Biography

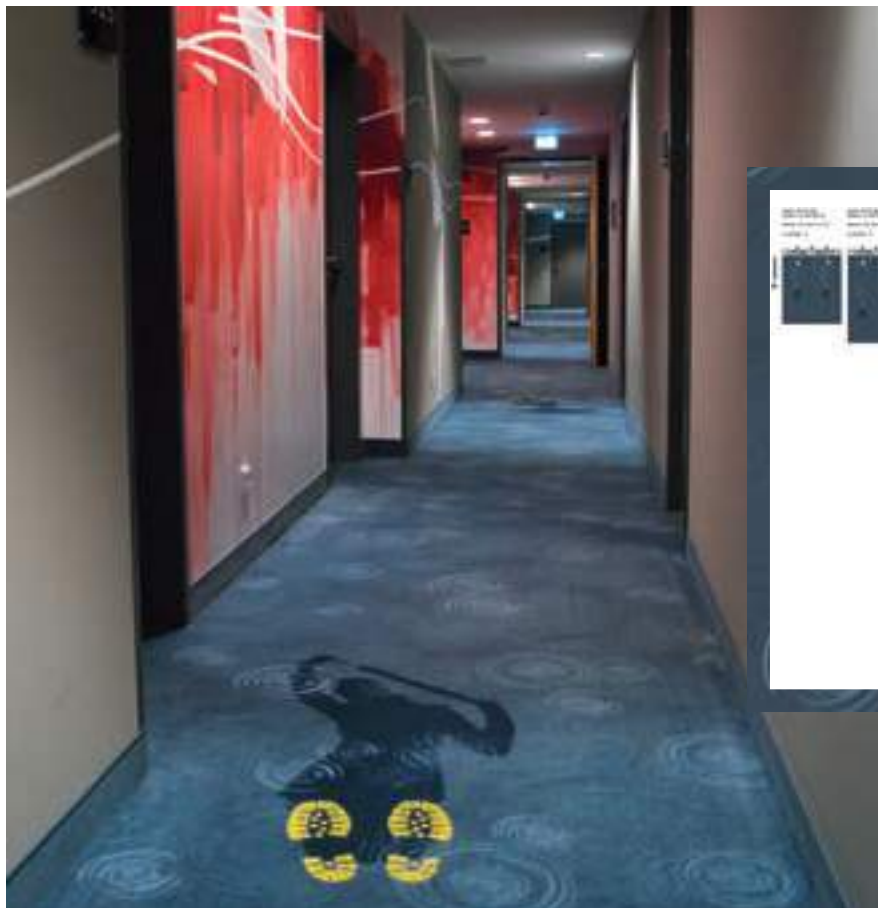
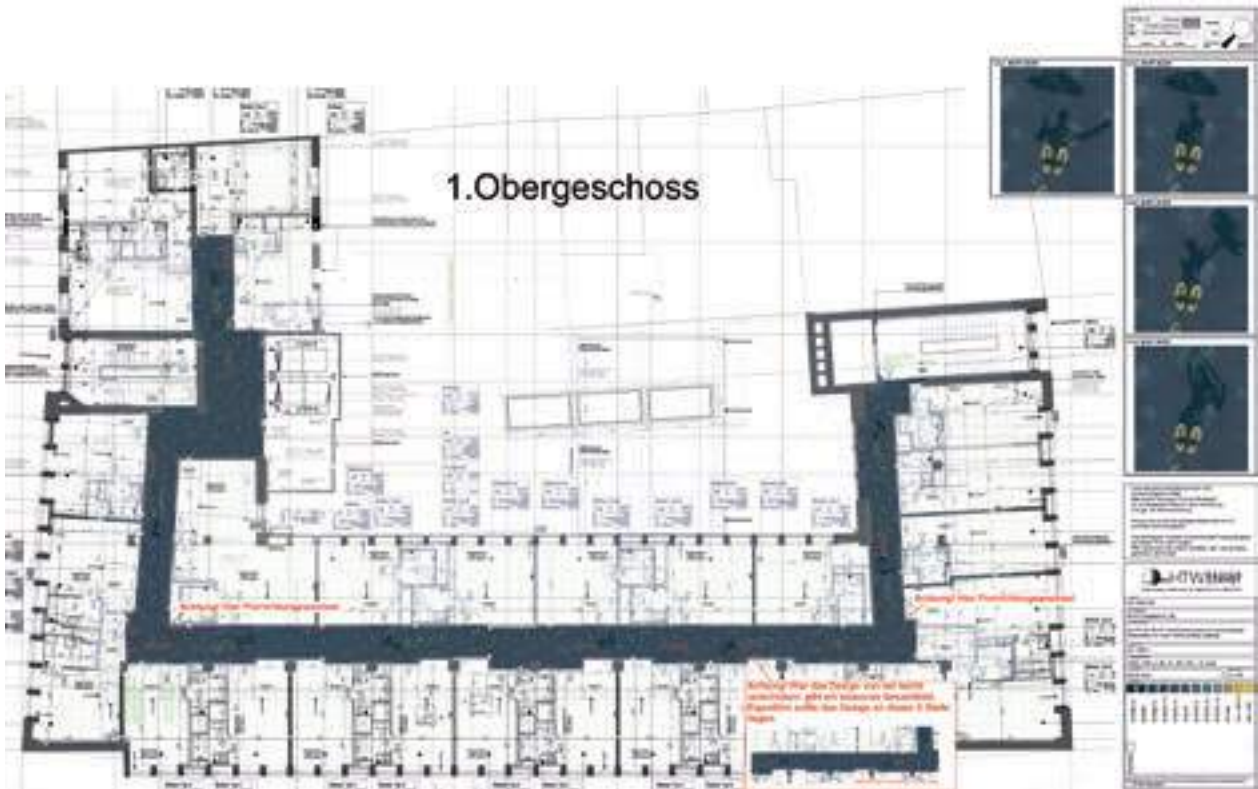
Tbilisi / Georgien



HOTELS

the niu Welly

Kiel



Objekt | PrOject

the niu Welly

Anlass | Occasion

Neubau | New building

www.theniu.de

tePPIchbOden | cArPet

Menge | Quantity

630 m² Flure / Corridors

2880 m² Zimmer / rooms

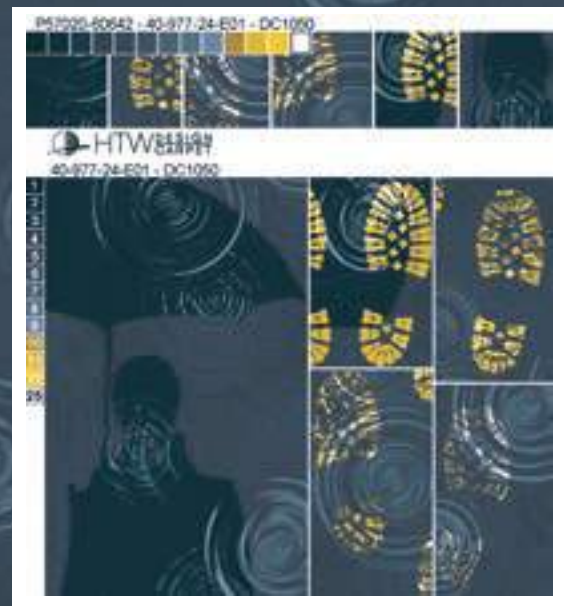
Qualität | Quality

DC 1050 FZ

deslgnkOnzePt | deslgn cOncePt

Kiel steht für Segeln, Meer, Strand und norddeutsches Schietwetter. Der Name Welly heisst übersetzt Gummistiefel und ist in Kiel ein Must-Have!

Kiel is known for sailing, the sea, the beach and the Northern German „Schietwetter“ (meaning ‚shitty weather‘). The name Welly however refers to the British term for rubber boots that are the ultimate must-have in Kiel.





Objekt | PrOject

Hotel Jams

Anlass | Occasion

Renovierung | Renovation

www.hotel-jams.com

tePPIchbOden | cArPet

Menge | Quantity

616 m²

Qualität | Quality

DC 1050

deslgnkOnzePt | deslgn cOncePt

Individuelles Boutique Hotel für Gäste mit Groove im Blut. Das einzigartige Konzept vereint Hotellerie, Gastronomie, Musik und Design. Die Schwingungen spiegeln sich auch im Teppichdesign wider.

Individual boutique hotel for guests with the groove in their blood. This unique concept brings together hospitality, gastronomy, music and design. The vibrations are also reflected in the carpet design.

HOTELS

Hotel Jams

München



Jams





Objekt | PrOject

 the niu Leo

Anlass | Occasion
 Neubau | New building

www.theniu.de

tePPIchbOden | cArPet

 Menge | Quantity

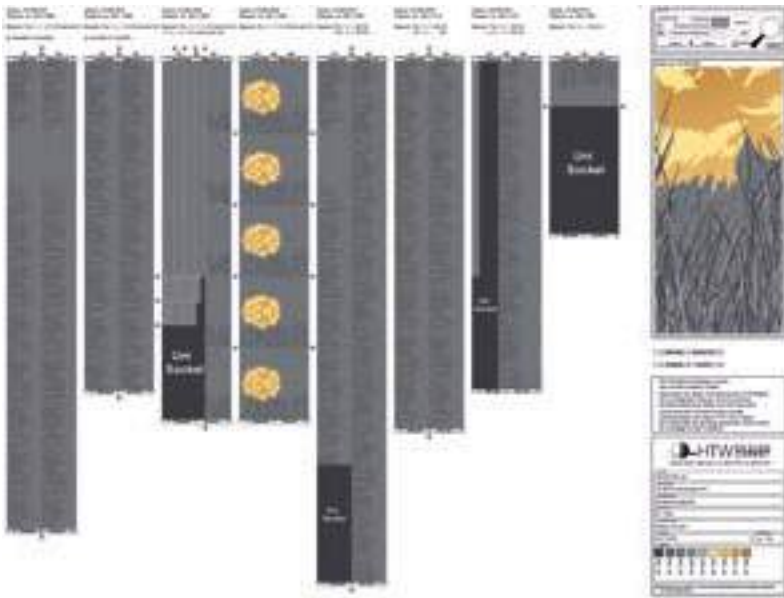
4913 m²

Qualität | Quality
 DC 1050

deslgnkOnzePt | deslgn cOncePt

Der Name Leo (übersetzt: Löwe) steht für einen starken Neuanfang in Nürnbergs aufstrebenden Viertel „Am Leonhardspark“.

The name Leo (for lion) reminds of the strong new start of Nuremberg's up-and-coming quarter „Am Leonhardspark“.

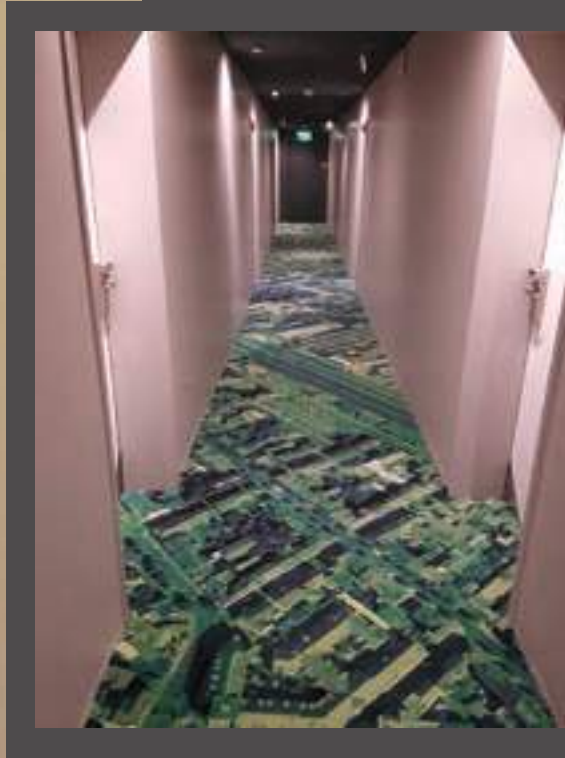


HOTELS

Hotel Fulda Mitte

Fulda





Objekt | PrOject

Hotel Fulda Mitte

Anlass | Occasion
Neubau | New building

Größe | Size
130 Zimmer | 130 rooms
4 Suiten | 4 suites

www.hotel-fulda-mitte.de

tePPIchbOden | cArPet

Menge | Quantity
907 m² Flure / Corridors
512 m² Zimmer / rooms

Qualität | Quality
DC 1052 / DC 850

deslgnkOnzePt | deslgn cOncePt

Auf Fuldas Wegen zum Zimmer schreiten: die Stadtkarte als Flurteppich. So kommt man schon im Hotel an einigen Sehenswürdigkeiten der Stadt vorbei.

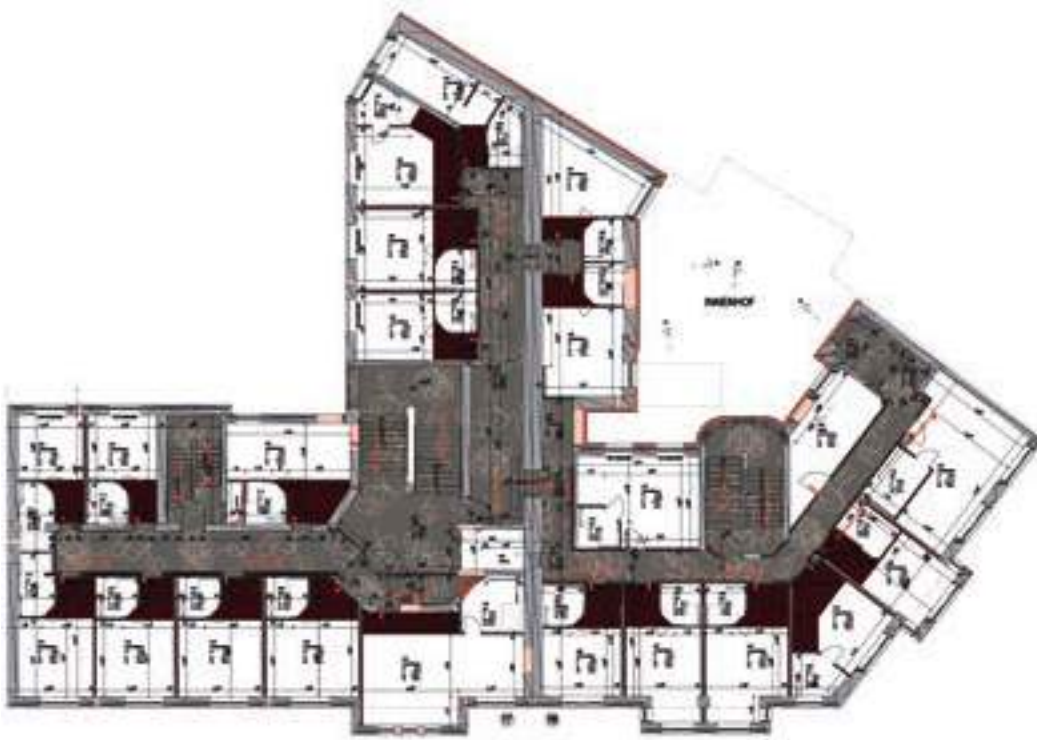
Reaching your room by walking the streets of Fulda: the street map as carpet. This way, visitors get an idea of the town's attractions while still in the hotel.

HOTELS

the niu Rig

Lübeck

the
niu





Objekt | PrOject

the niu RIG

Anlass | Occasion

Neubau | New building

www.theniu.de

tePPIchbOden | cArPet

Menge | Quantity

1290 m²

Qualität | Quality

DC 1050 FZ 550

deslgnkOnzePt | deslgn cOncePt

Der Name Rig (übersetzt: Takelage) bezeichnet die Art, wie ein Segelschiff mit Masten und Segeln bestückt ist.

The name Rig is a term from sailing ships, meaning the way that masts and sails are placed.

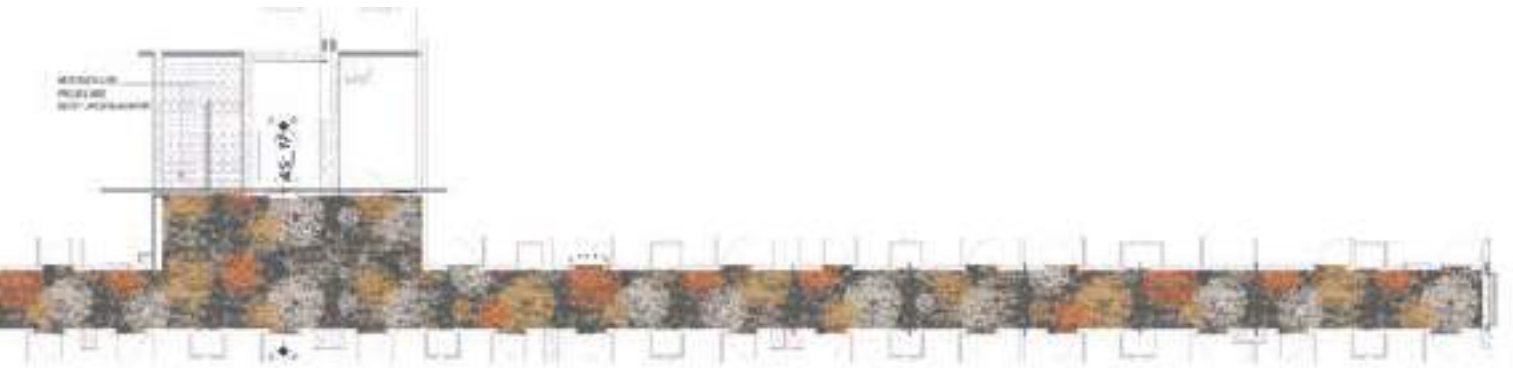




HOTELS

Elite World Sapanca & Butik Hotel

Sapanca, Sakarya / Turkey



Objekt | PrOject

Elite World Sapanca & Butik Hotel

Anlass | Occasion

Renovierung | Renovation, Baujahr 2019



Größe | Size

500 Zimmer | 500 rooms

14 Suiten | 14 suites

www.eliteworldhotels.com.tr



tePPIchbOden | cArPet

Menge | Quantity

3685 m² Flure / Corridors

7247 m² öffentliche Bereiche / public areas

Qualität | Quality

AP 1050 Filz 550



designkOnzePt | design cOncePt

Das gehobene Resort ist umgeben von Wald und liegt 2 km vom Sapanca-See entfernt. Die floralen Elemente des Designs spiegeln die Verbundenheit zur großartigen Natur der Umgebung wieder.



This exclusive resort is surrounded by forest and lies only two kilometres from Lake Sapanca. The floral elements of the design mirror the close connection to the magnificent natural setting.



Objekt | PrOject

the niu Mood

Anlass | Occasion

Neubau | New building

www.theniu.de

tePPIchbOden | cArPet

Menge | Quantity

1570 m² Flure / Corridors
5820 m² Zimmer / rooms

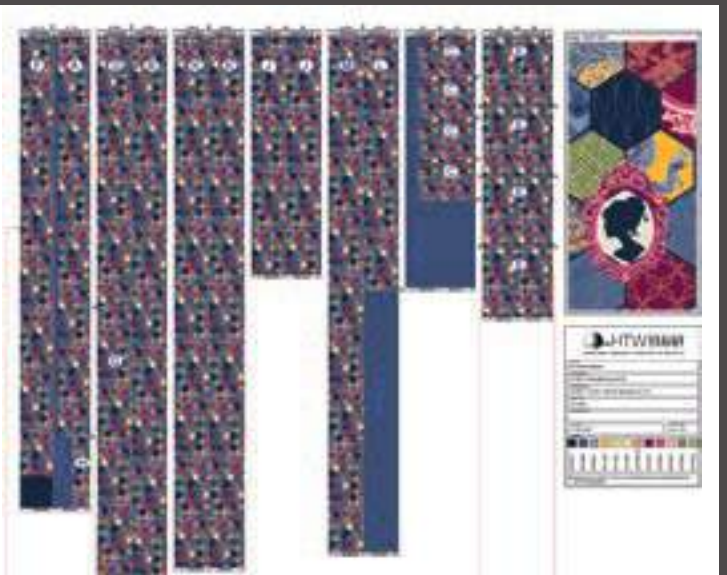
Qualität | Quality

DC 1050 ZR

designkOnzePt | deslgn cOncePt

Das the niu Mood zollt mit seinem Namen der beliebten Mainzer Fastnacht Tribut – gute Stimmung und pure, knallbunte Lebensfreude

The niu Mood is named after the happy vibe that you can feel throughout the city during carnival in Mainz - fun and high spirits creating a great mood!



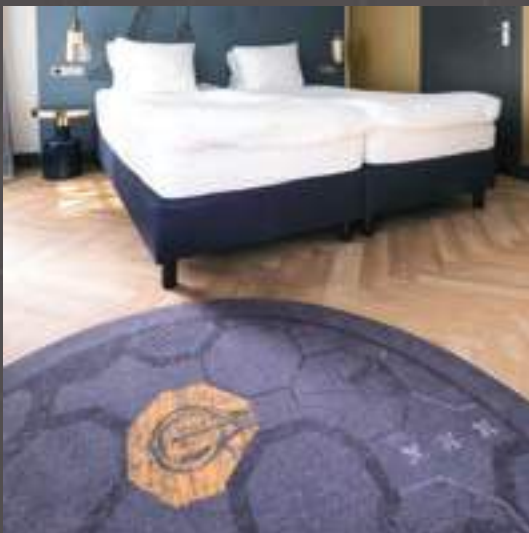
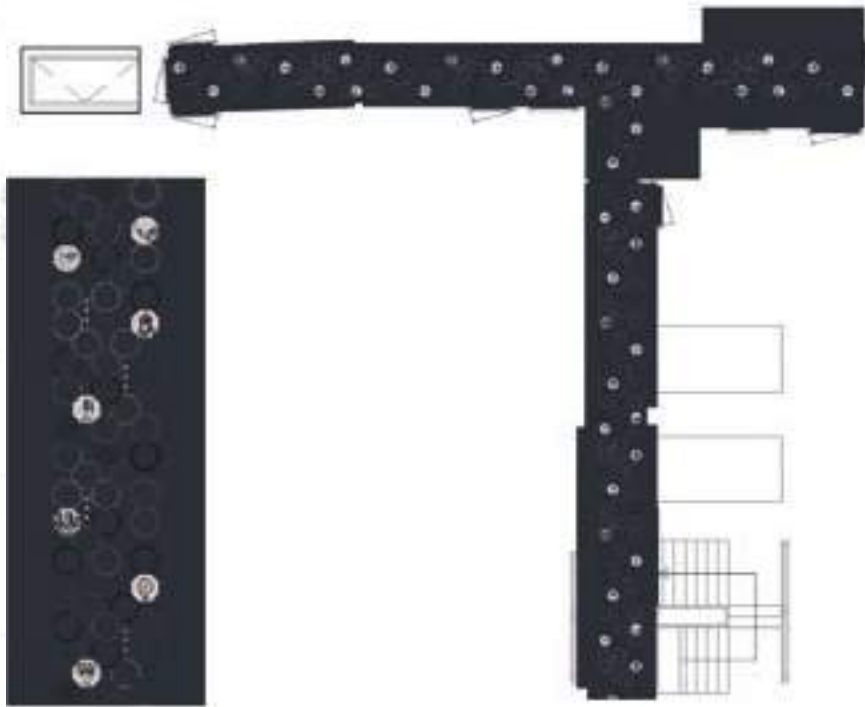


HOTELS

Die Port van Cleve

Amsterdam

150 YEARS
DIE PORT VAN CLEVE





Objekt | PrOject

Die Port van Cleve

Anlass | Occasion

Renovierung | Renovation

Größe | Size

122 Zimmer | 122 rooms

www.dieportvanleve.com

tePPIchbOden | cArPet

Menge | Quantity

106 m² Flure / Corridors

90 m² Zimmer / rooms

Qualität | Quality

AP 1050 ZR

deslgnkOnzePt | deslgn cOncePt

Ein traditionsreiches Hotel mit Geschichte, bestehend aus drei Gebäuden aus dem 18. Jahrhundert.

A hotel with a long history and rich in tradition, comprising three 18th-century buildings.





Objekt | PrOject

tePPIchbOden | cArPet

Bei Schumann

Menge | Quantity

4-Sterne-Superior, 1 Michelin-Stern

607 m²

Anlass | Occasion

Qualität | Quality

Renovierung | Renovation

DC 1252 ZR

www.bei-schumann.de



designkOnzePt | design cOncePt

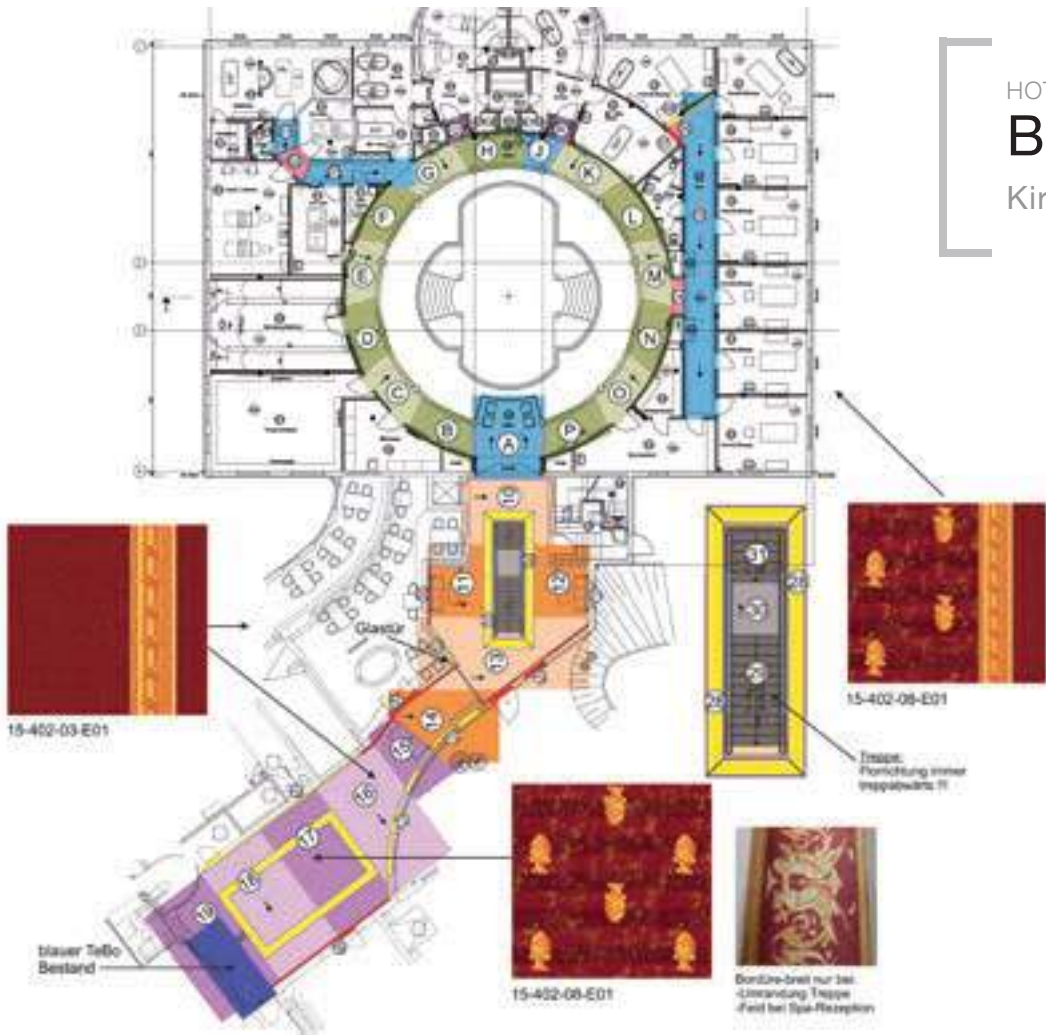
Eines der besten Luxus- und Wellness-Hotels in Sachsen.
Ein Ort der Sinne und Sinnlichkeit, inspiriert vom Luxus der
antiken römischen Bäder.

One of the finest luxury and wellness hotels in Saxony.
A place of sense and sensuality, inspired by the luxury of
ancient Roman baths.

HOTELS

Bei Schumann

Kirschau

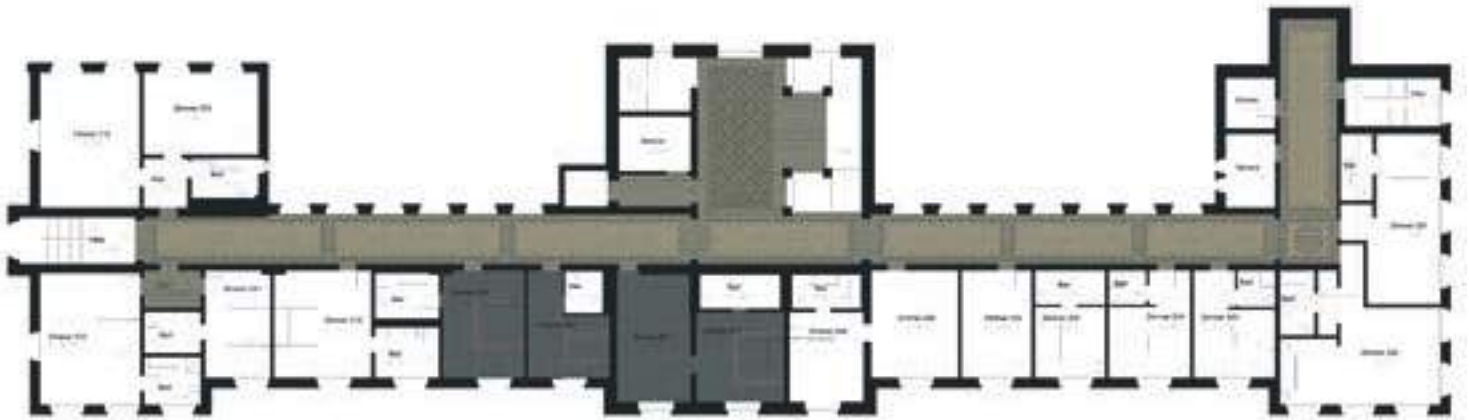
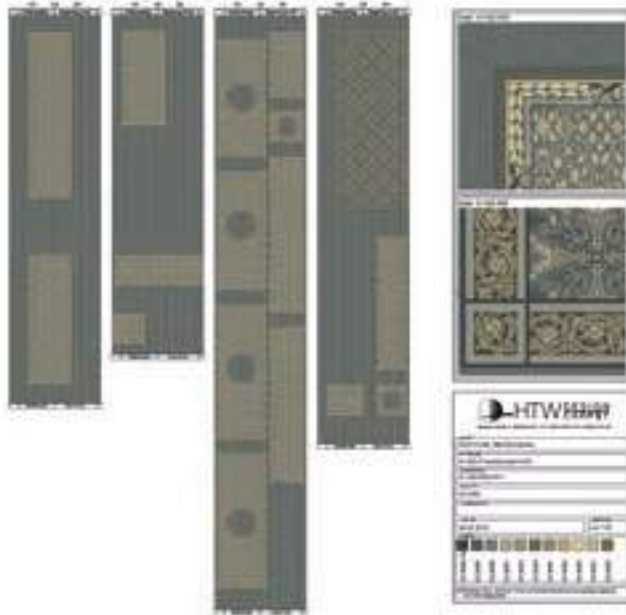


HOTELS

DORINT

Bad Brückenau

Dorint



Objekt | PrOject

Dorint Bad Brückenau

4-Sterne-Superior-Hotel

Anlass | Occasion

Renovierung | Renovation

Größe | Size

116 Zimmer | 116 rooms

www.hotel-bad-brueckenau.dorint.com/de/

tePPIchbOden | cArPet

Menge | Quantity

2073 m²

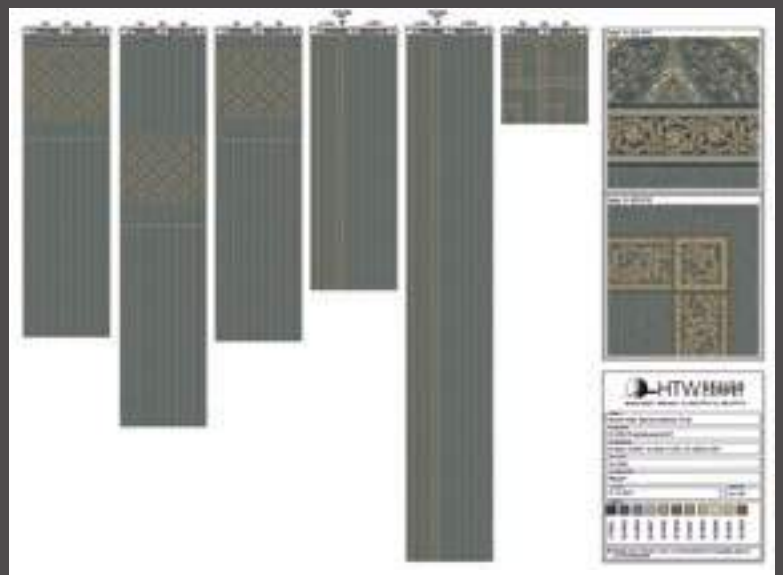
Qualität | Quality

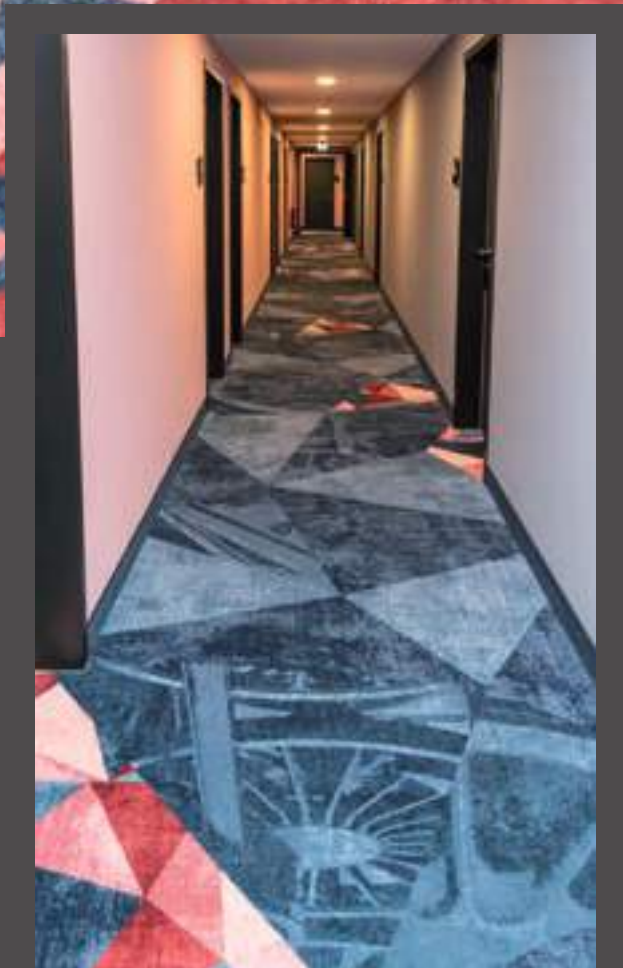
DC 1052

deslgnkOnzePt | deslgn cOncePt

Die klassisch-eleganten Designs aus den Kollektionen Bel Etage und Seasons Comfort unterstreichen das historische Bauwerk inmitten blühender Parkanlagen.

The elegant classical designs from the Bel Etage and Seasons Comfort collections highlight this historic building surrounded by blossoming parkland.





Objekt | PrOject

the niu Loco

Anlass | Occasion

Neubau | New building

www.theniu.de

tePPIchbOden | cArPet

Menge | Quantity

1056 m²

Qualität | Quality

DC 1050



deslgnkOnzePt | deslgn cOncePt

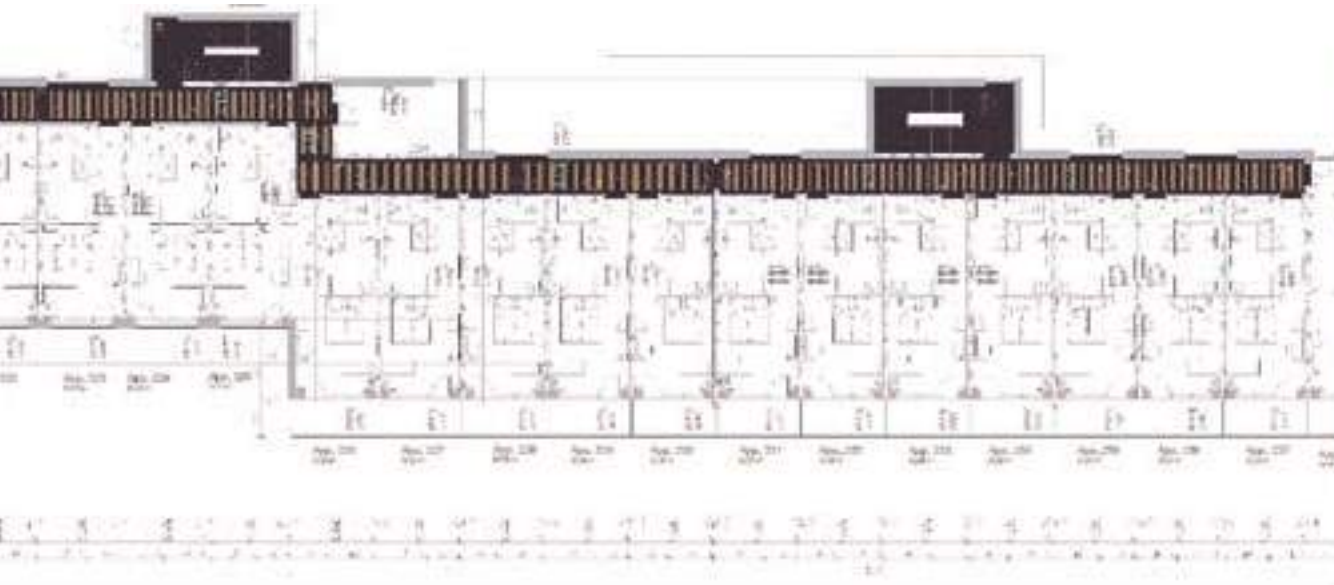
Der Name Loco ist eine Hommage an das ehemalige Eisenwerk Hirschau, welches vor 175 Jahren weltbekannte Lokomotiven produzierte.

The name Loco is a reminder of the former iron works in Hirschau, where world-famous locomotives were built some 175 years ago.

HOTELS

Hotel Weitblick

Marktoberdorf



DAS ****
WEITBLICK
Allgäu



Objekt | PrOject

Hotel Weitblick

www.weitblick-allgaeu.de

tePPIchbOden | cArPet

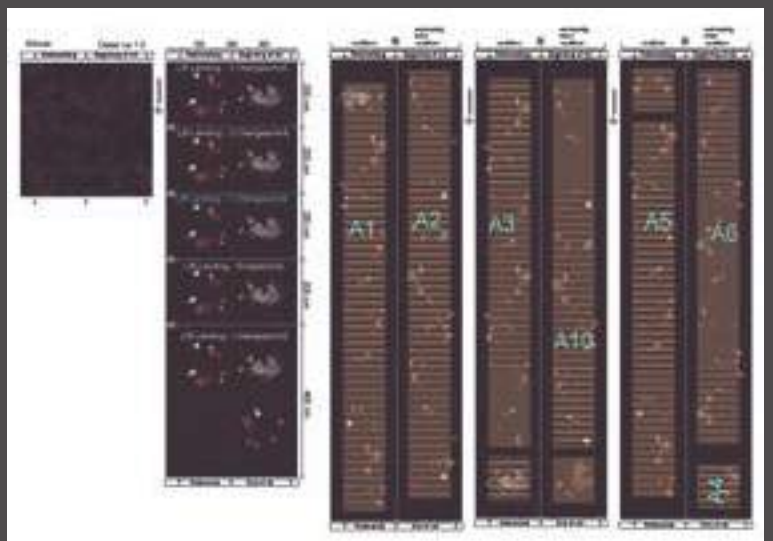
Menge | Quantity
1563 m²

Qualität | Quality
DC 1050

desIgnKOnzePt | desIgn cOncePt

Der Design-Fokus liegt hier auf der Schönheit und Vielfalt: Stilvoll, aber nicht abgehoben. Authentisch, aber nicht aufgesetzt.

Here the design focus is on beauty and variety – stylish, but not aloof. Authentic, not contrived.



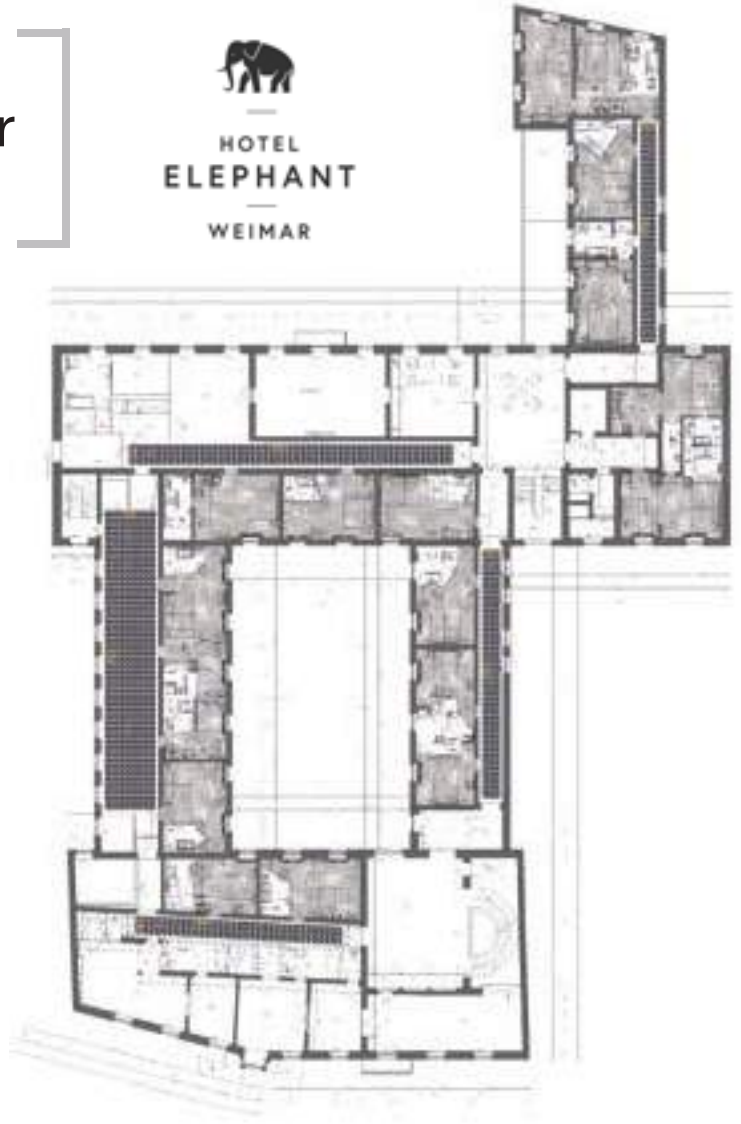
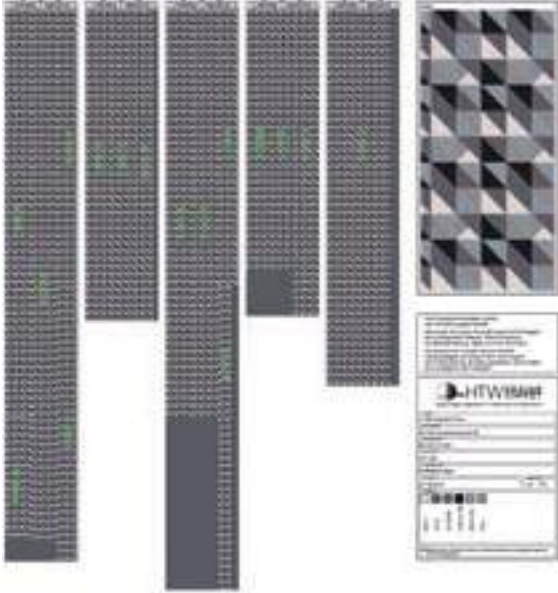
HOTELS

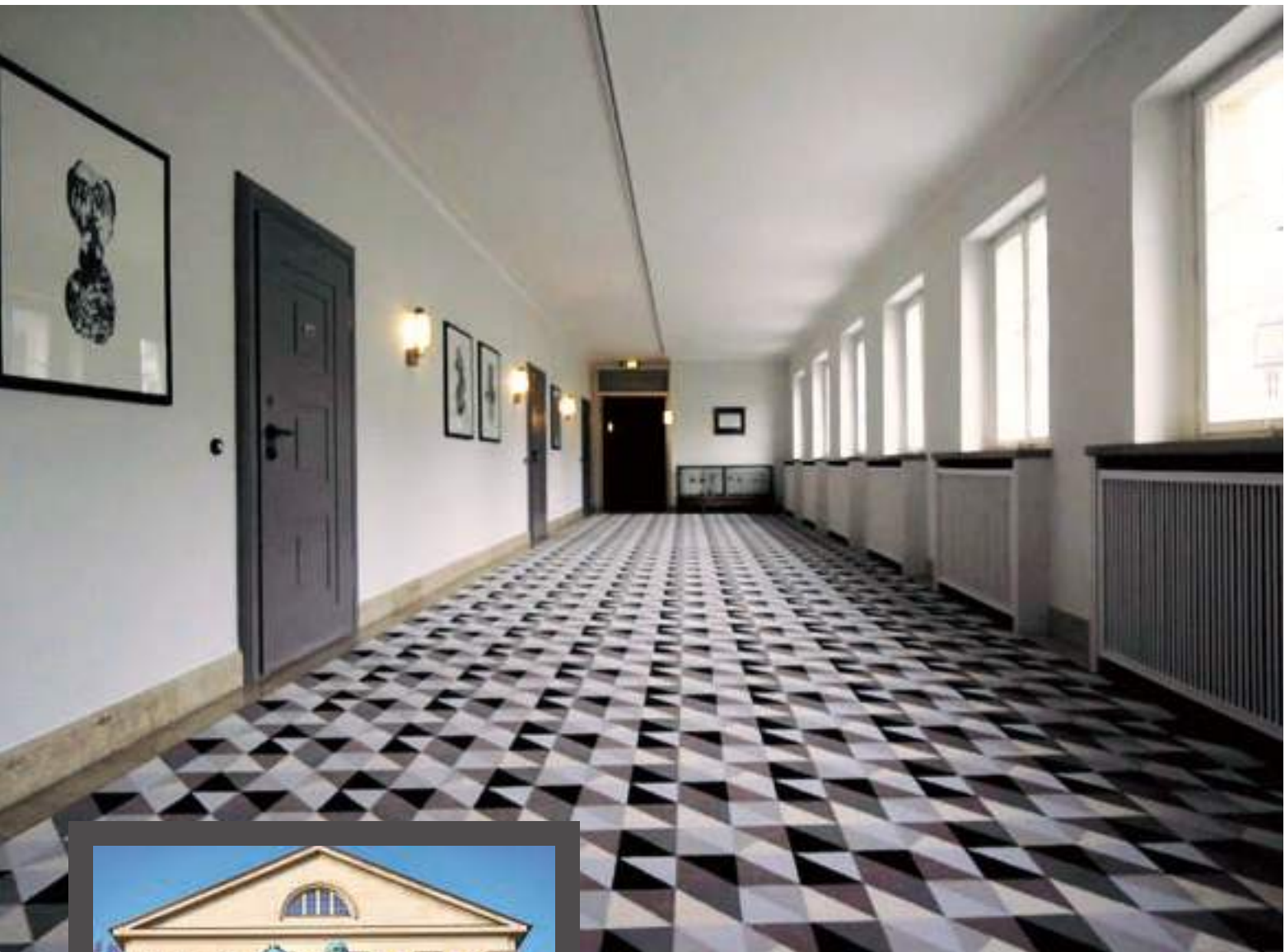
Hotel Elephant Weimar

Weimar



HOTEL
ELEPHANT
WEIMAR





Objekt | PrOject

Hotel Elephant

Anlass | Occasion

Renovierung | Renovation

Größe | Size

99 Zimmer | 99 rooms

tePPIchbOden | cArPet

Menge | Quantity

475 m² Flure / Corridors
2750 m² Zimmer / rooms

Qualität | Quality

DC 850 FZ / DC 1252 FZ

www.hotelelephantweimar.de

deslgnkOnzePt | deslgn cOncePt

Die grafische Gestaltung des Korridor-Teppichbodens erinnert an die Designsprache der Bauhaus-Textil-Werkstatt in Weimar (später Dessau). Sie war eine der erfolgreichsten und produktivsten Werkstätten am Bauhaus.

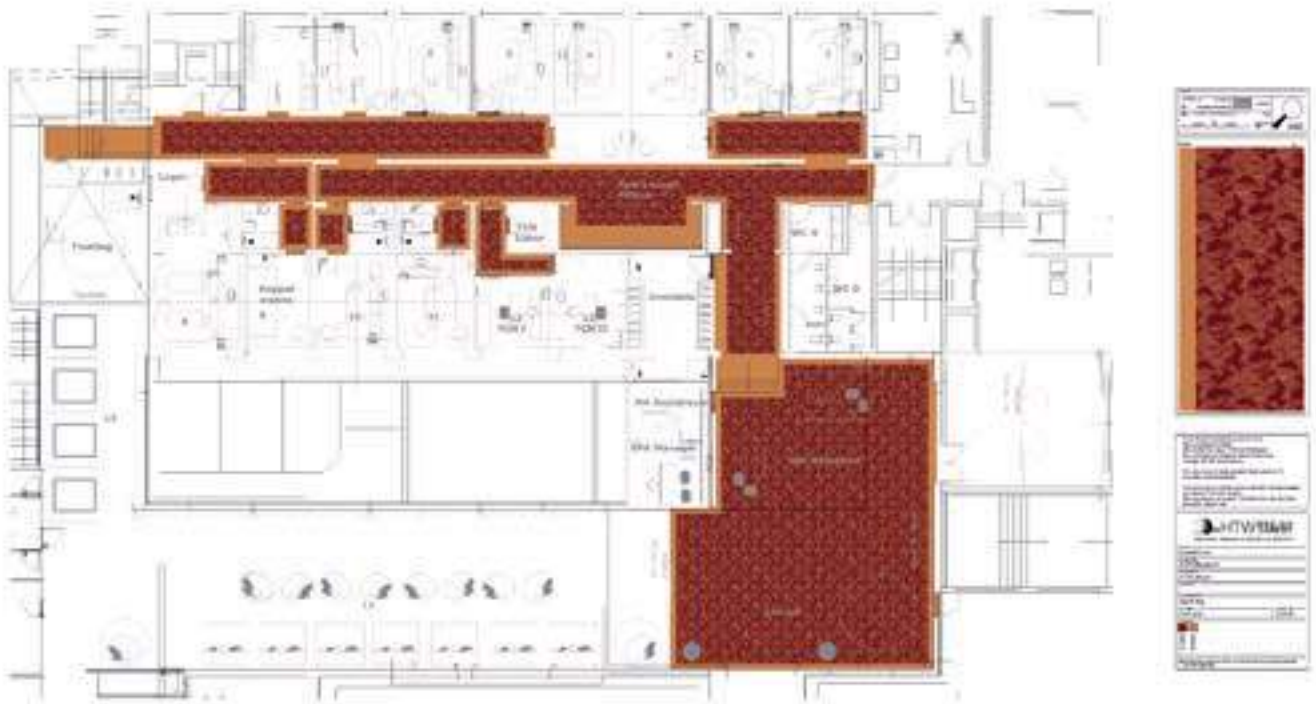
The graphical design of the corridor carpet is reminiscent of the design language of the Bauhaus textile workshop in Weimar (later in Dessau). This was one of the Bauhaus movement's most successful and productive workshops.



HOTELS

Sonnenhof

Lam, Bayerischer Wald



Objekt | PrOject

Hotel Sonnenhof
4-Sterne-Superior

Größe | Size

166 Zimmer | 166 rooms
17 Suiten | 17 suites

www.sonnenhof-lam.de

tePPIchbOden | cArPet

Menge | Quantity
262 m²

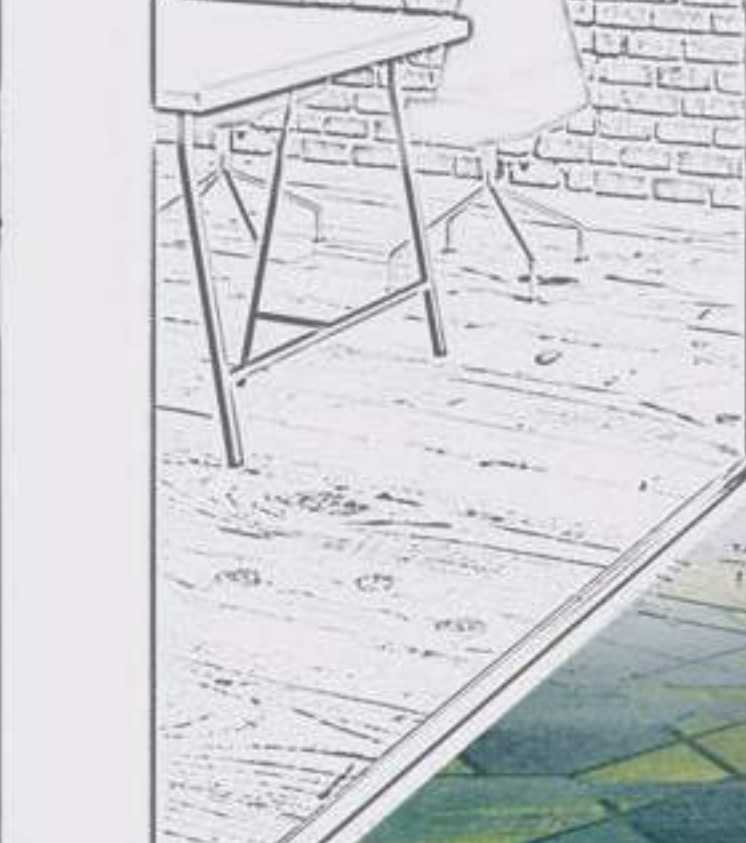
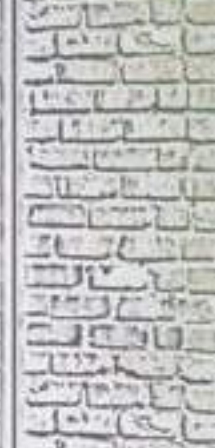
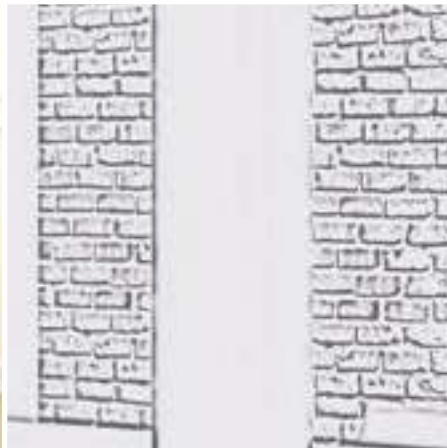
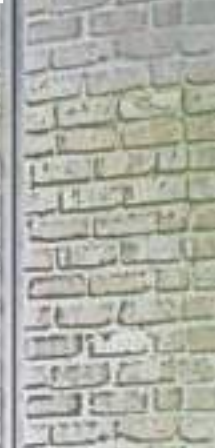
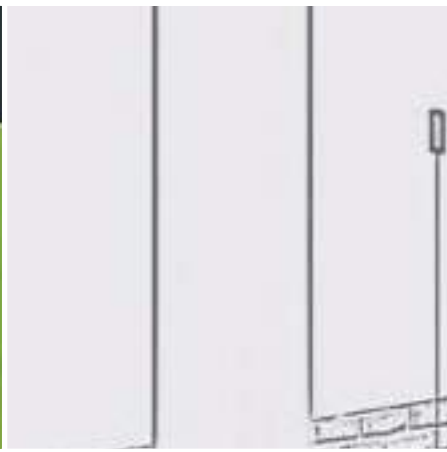
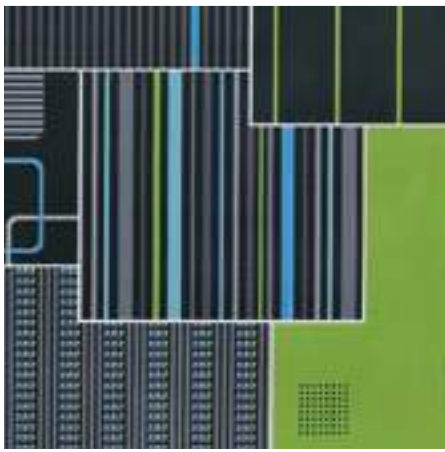
Qualität | Quality
DC 1052

deslgnkOnzePt | deslgn cOncePt

Das chinesische Wellenmuster des Teppichbodens weist auf das in deutschen Hotels noch recht seltene Angebot der ganzheitlichen Gesundheitsbehandlung durch die traditionelle chinesische Medizin hin.

The Chinese wave pattern of the carpet hints at the holistic health treatment on offer, based on traditional Chinese medicine – something still very rare in German hotels.







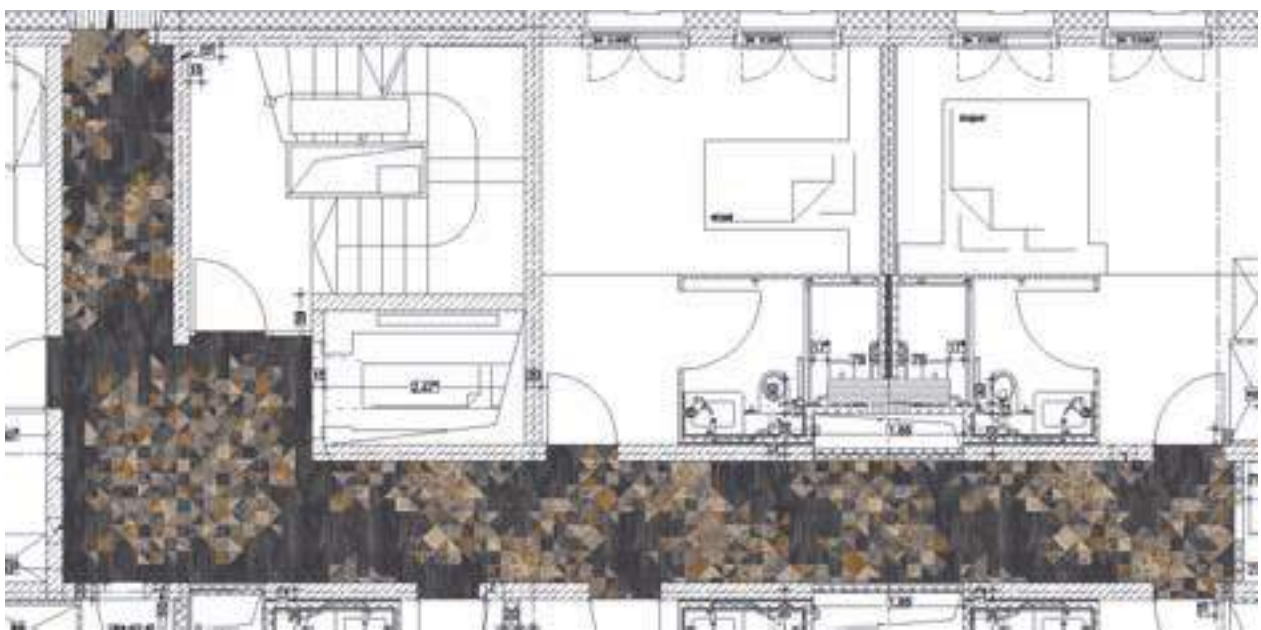
24 CONCEPTS



16501-A01

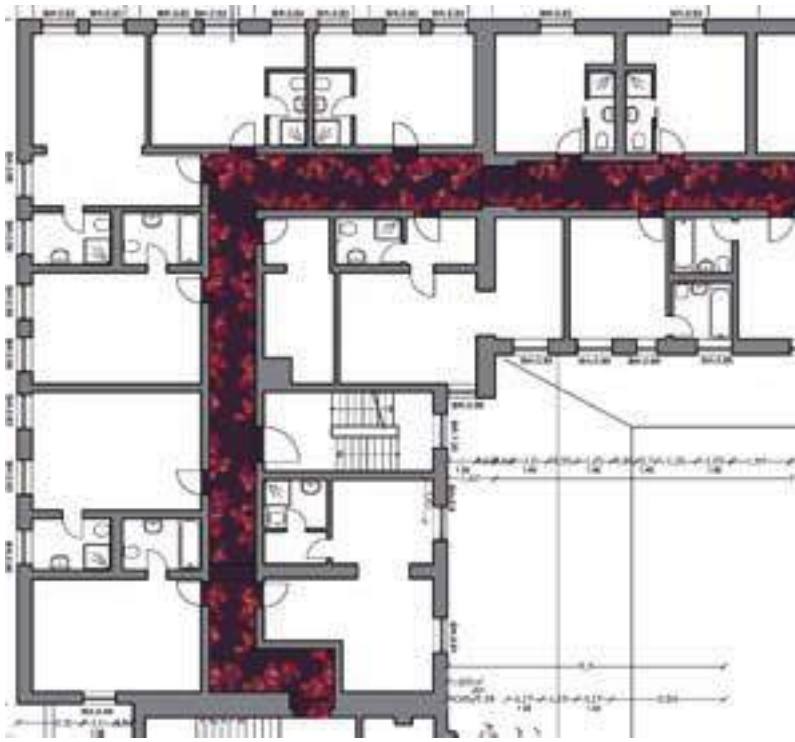
KF 7056	KF 8072	KF 8071	KF 8063	KF 8061	KF 8060
KF 1059	KF 8055	KF 8059	KF 9053	KF 5098	KF 5059

CONCEPT
1









CONCEPT 2



16502-A01

				
KF 3068	KF 4066	KF 4058	KF 4076	KF 4070
				
KF 4077	KF 3072	KF 2070	KF 2072	KF 4051

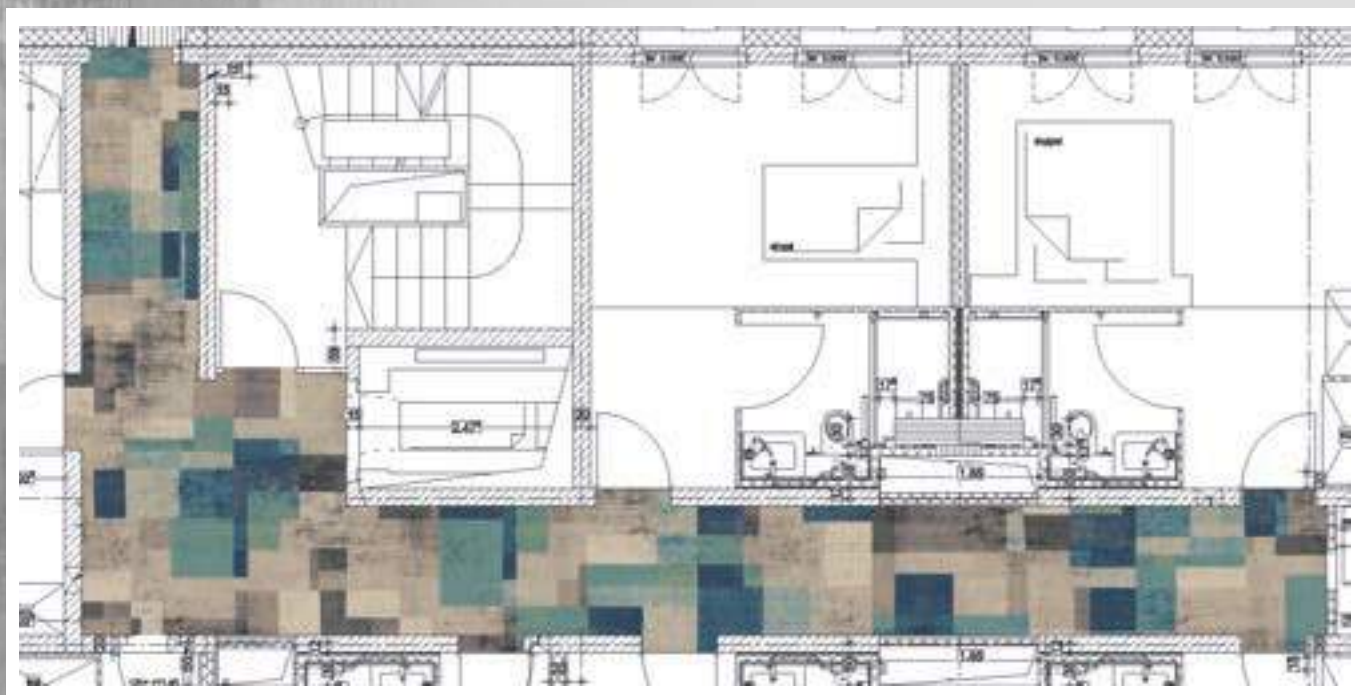


CONCEPT 3



16503-A01

KF 8061	KF 8063	KF 8064	KF 8071	KF 8072	KF 7056
KF 6058	KF 6104	KF 6052	KF 5074	KF 5076	







CONCEPT 4

16504-A01

KF 8070	KF 8068	KF 2068	KF 2063	KF 2062	KF 2053
KF 9060	KF 7056	KF 7055	KF 9063	KF 7053	KF 9062

















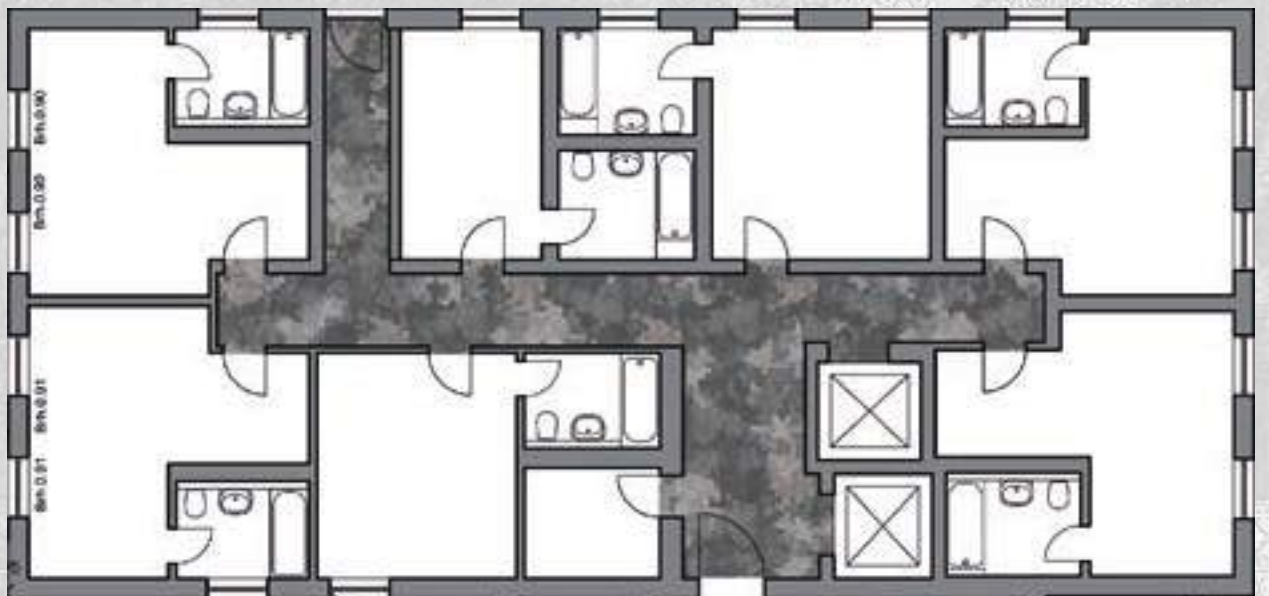




16505-A01

					
KF 9901	KF 9902	KF 9911	KF 9903	KF 9904	KF 9909
					
KF 7058	KF 6057	KF 6050	KF 8071	KF 8064	KF 8063















CONCEPT 5

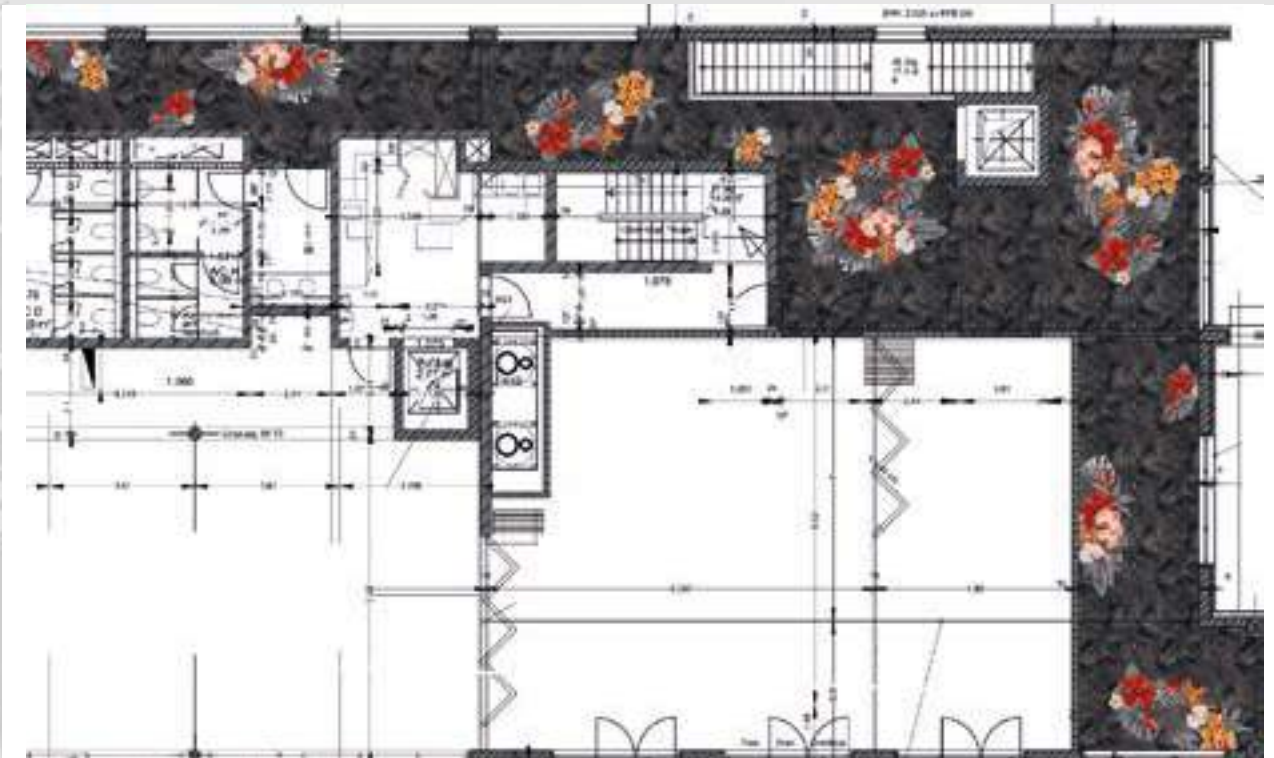


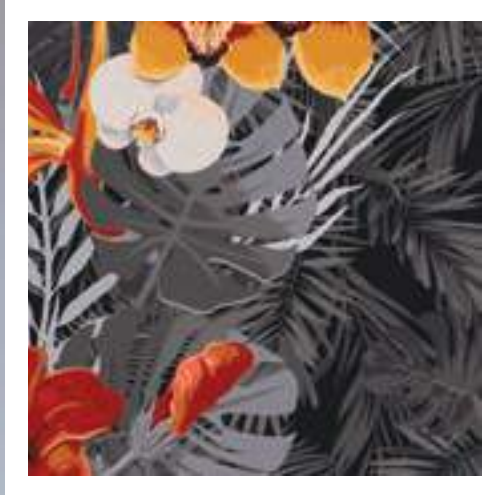


CONCEPT **6**

16506-A01

							
KF 9060	KF 9915	KF 9913	KF 9918	KF 9924	KF 9061	KF 1906	KF 1908
							
KF 3068	KF 3915	KF 3082	KF 3081	KF 3907	KF 3908	KF 3910	KF 8060



















16508-A01

				
KF 6908	KF 6070	KF 6056	KF 6114	KF 6052
				
KF 6063	KF 6108	KF 6104	KF 6102	KF 6100

CONCEPT
8



















CONCEPT 9

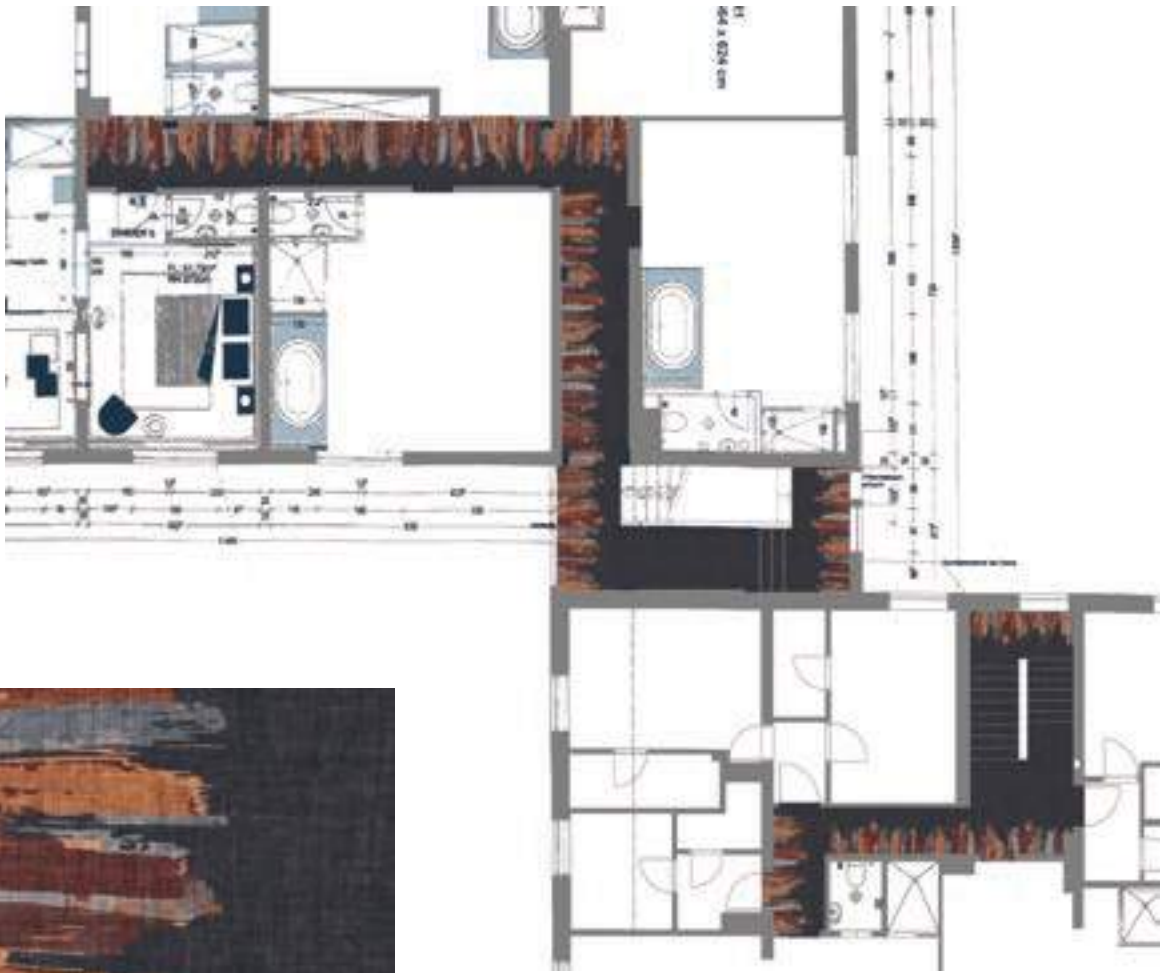


16509-A01

					
KF 9060	KF 7056	KF 7055	KF 8072	KF 8076	KF 8056
					
KF 8051	KF 8062	KF 8061	KF 7052	KF 9062	KF 9061



















CONCEPT
101













16510-A01

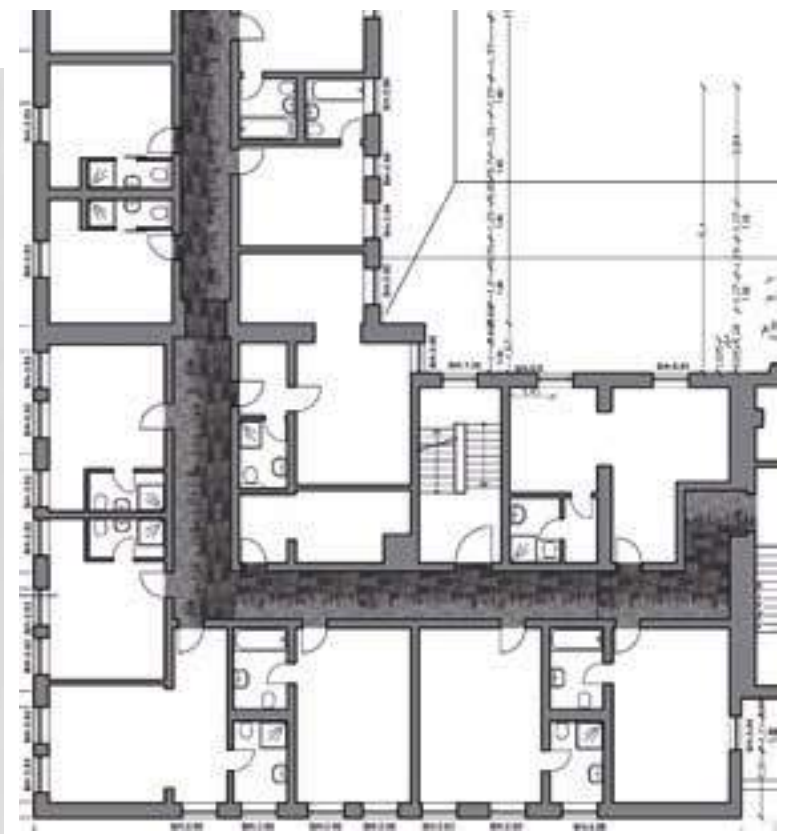
					
KF 9060	KF 7056	KF 9063	KF 7053	KF 9062	KF 9061
					
KF 8080	KF 1058	KF 2053	KF 2061	KF 3058	KF 3064





16511-A01

					
KF 9058	KF 7056	KF 9063	KF 7053	KF 7052	KF 7051
					
KF 9061	KF 8060	KF 8061	KF 8071	KF 8072	KF 8073














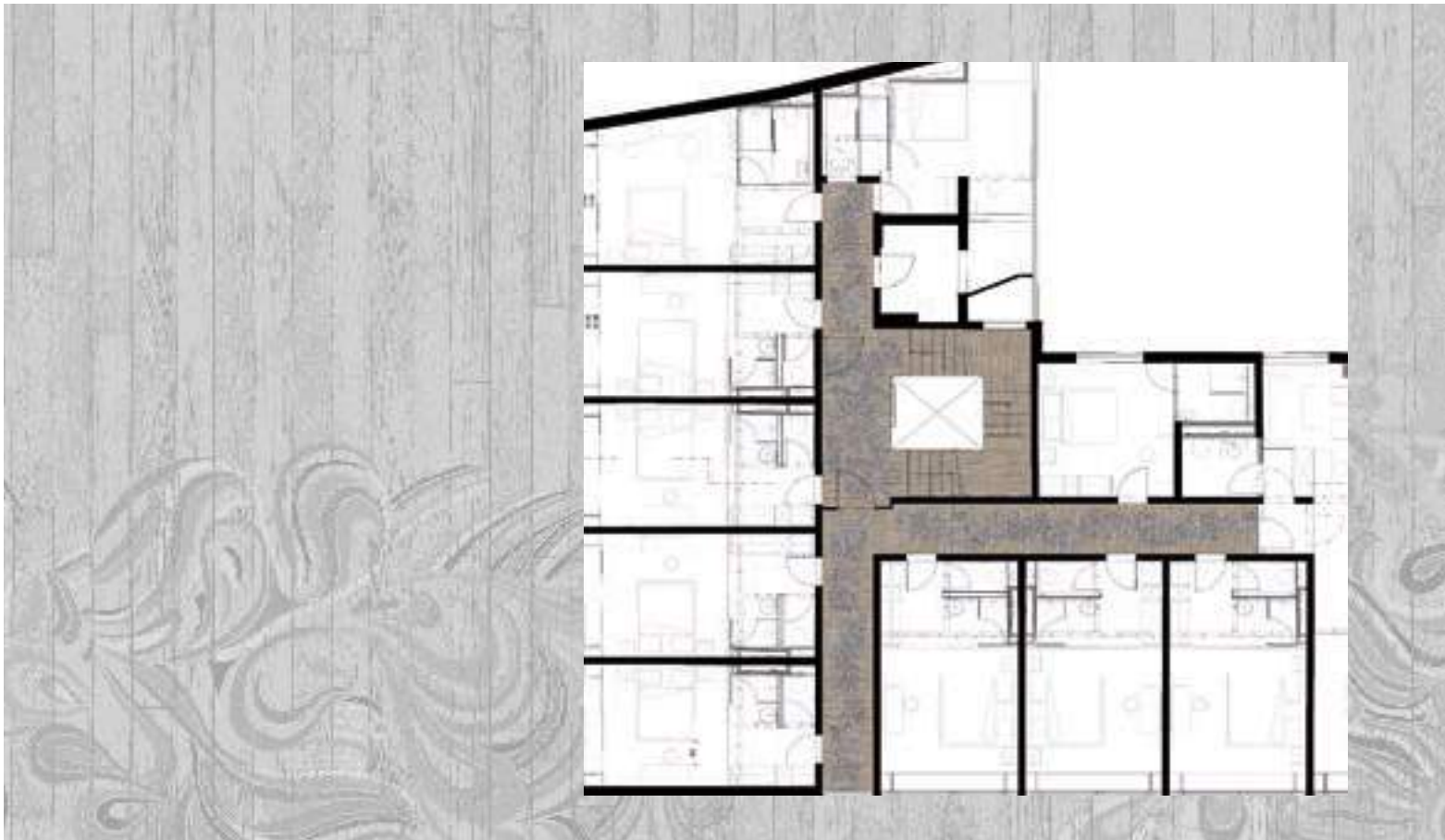


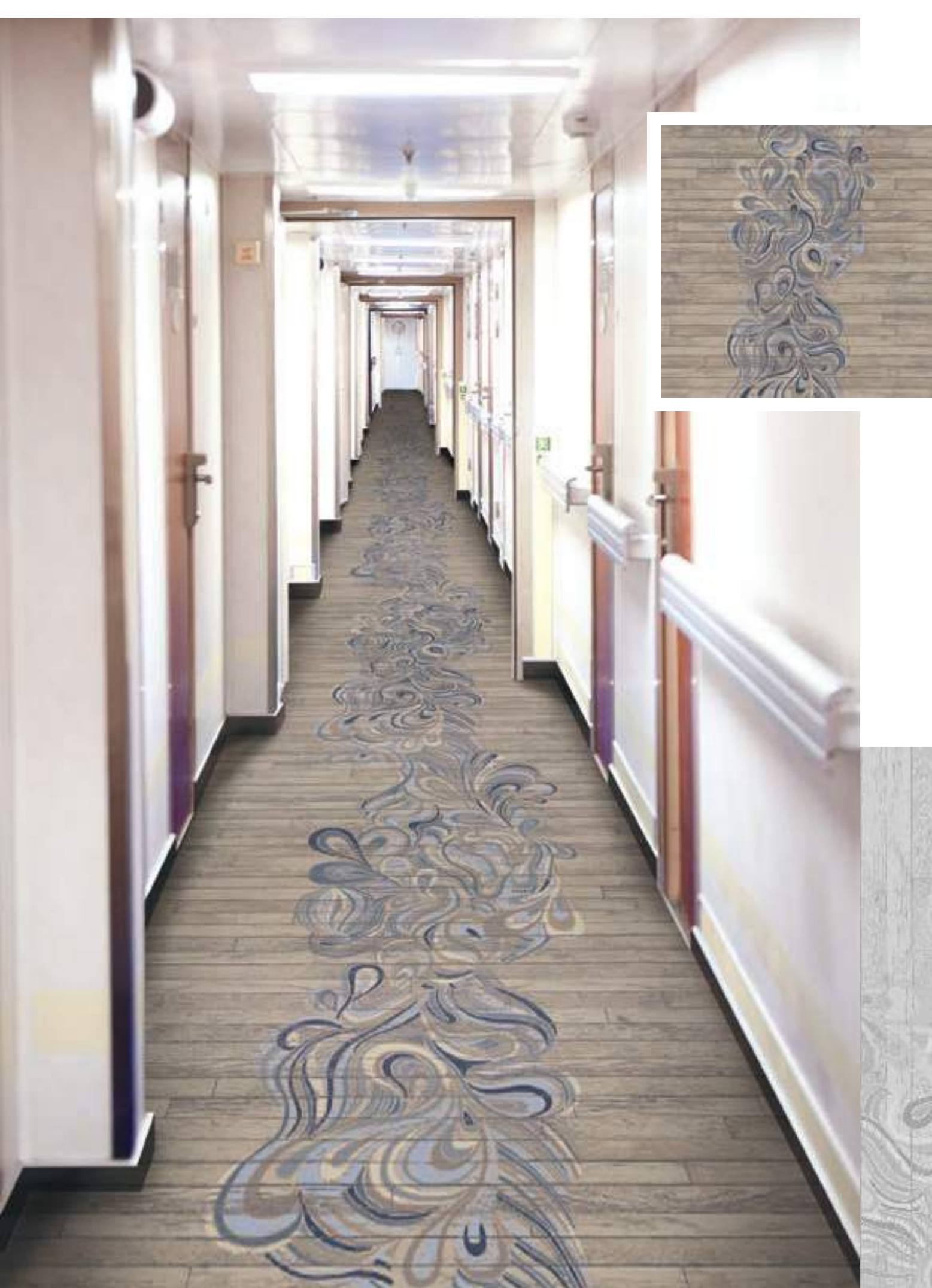


CONCEPT 121

16512-A01

					
KF 8072	KF 8071	KF 8064	KF 8063	KF 8061	
					
KF 5058	KF 9054	KF 9053	KF 9052	KF 9062	KF 9061





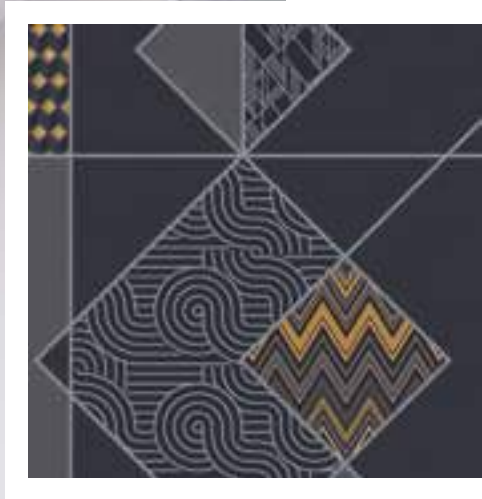
CONCEPT **13**



16513-A01

- | | | | | |
|---------|---------|---------|---------|---------|
| | | | | |
| KF 7056 | KF 7055 | KF 9063 | KF 7053 | KF 9062 |
| | | | | |
| KF 1060 | KF 1058 | | | |

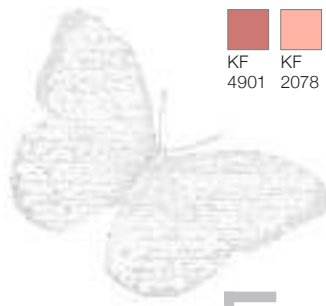




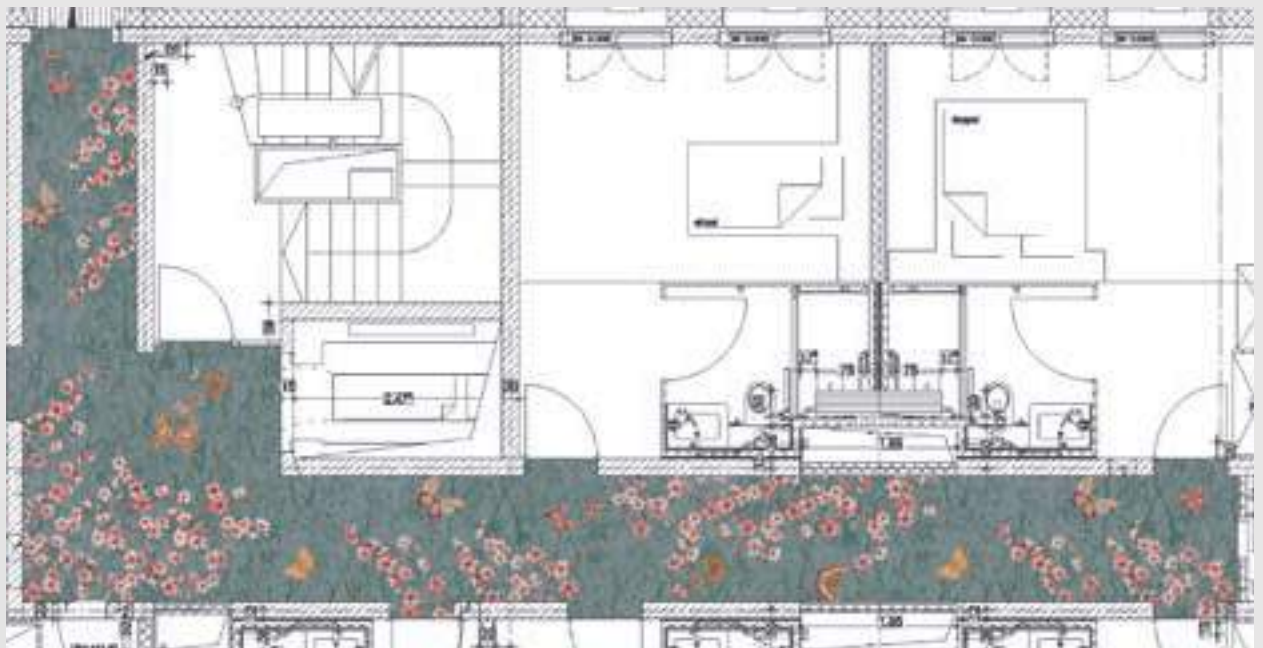


16514-A01

KF 6905	KF 6901	KF 6902	KF 8916	KF 8057	KF 8054	KF 4904	KF 4902
KF 4901	KF 2078	KF 3911	KF 8060	KF 2064	KF 2053	KF 1058	KF 6931



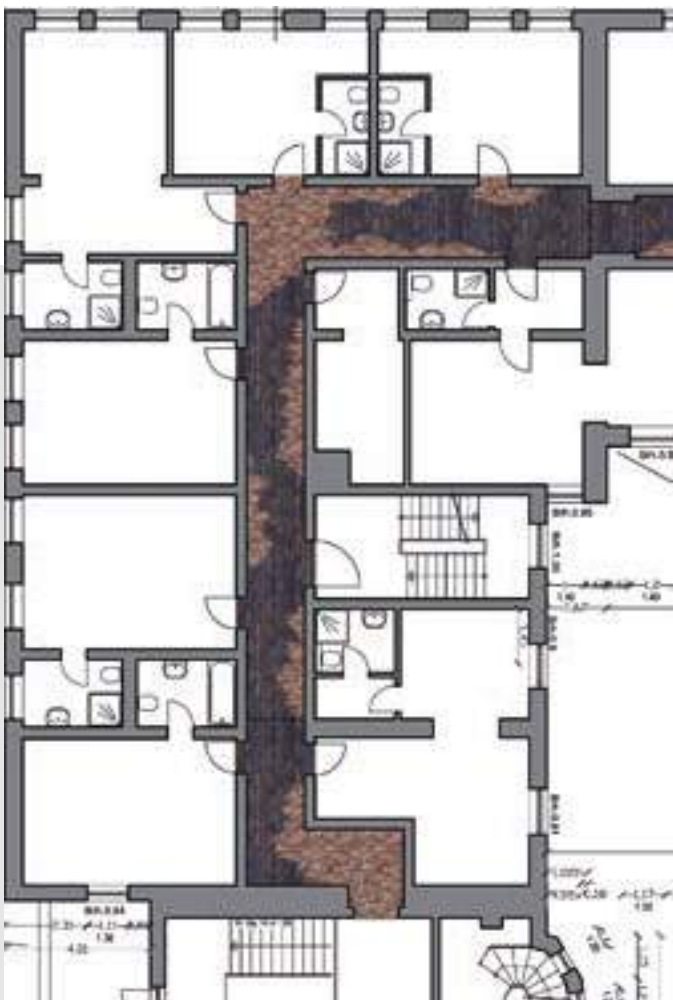
CONCEPT 14







CONCEPT 15



16515-A01

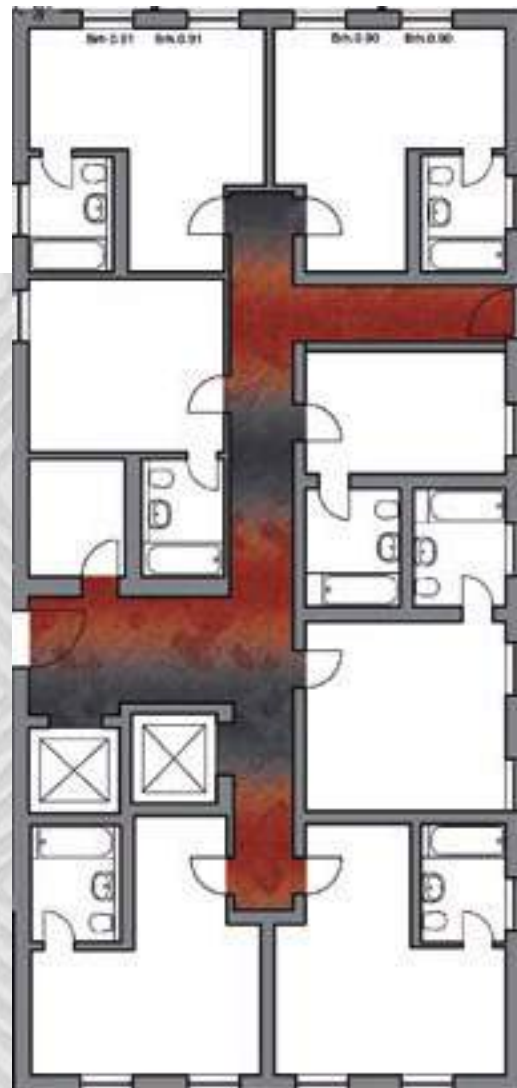
KF 9060	KF 8073	KF 8068	KF 8078	KF 8079	KF 8064	KF 8063	KF 8050
KF 3061	KF 3060	KF 3051	KF 2061	KF 2074	KF 5067	KF 5060	KF 5057

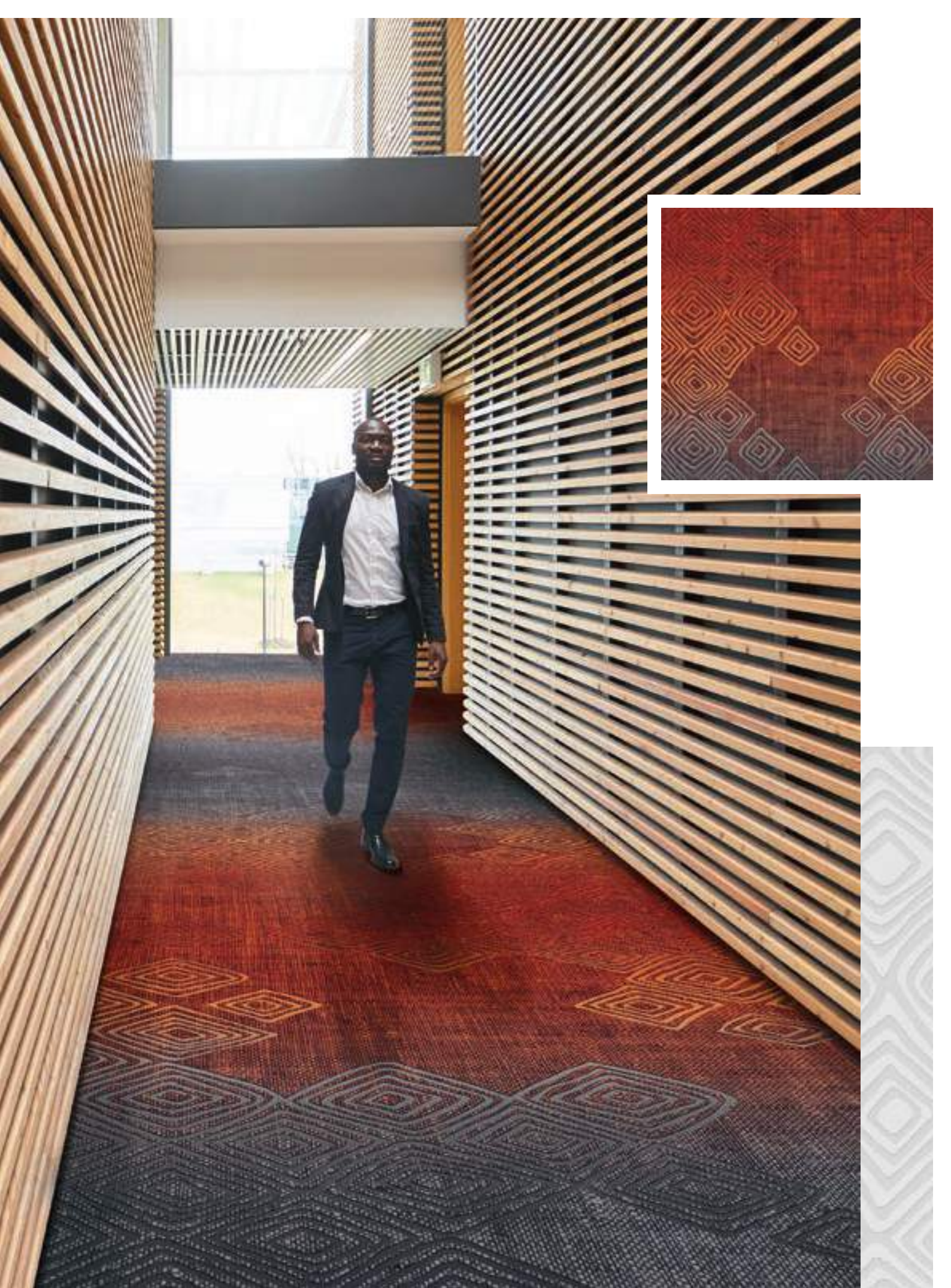


CONCEPT 16

16516-A01








				
KF 9060	KF 7056	KF 7055	KF 7053	KF 9062
				
KF 3083	KF 3082	KF 3081	KF 2057	KF 2056

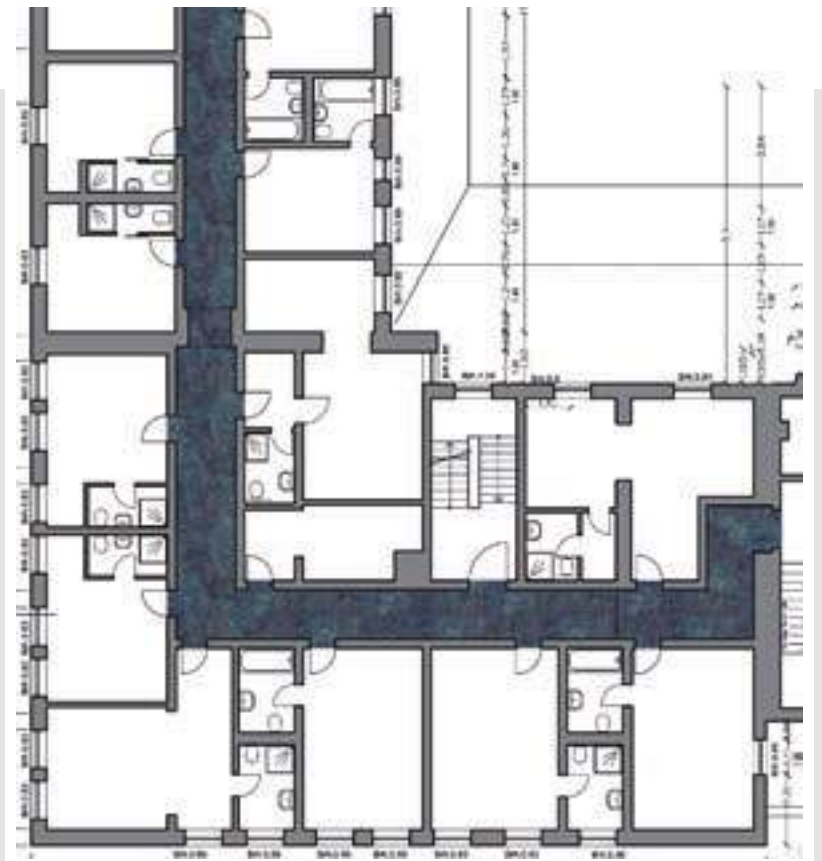






16517-A01

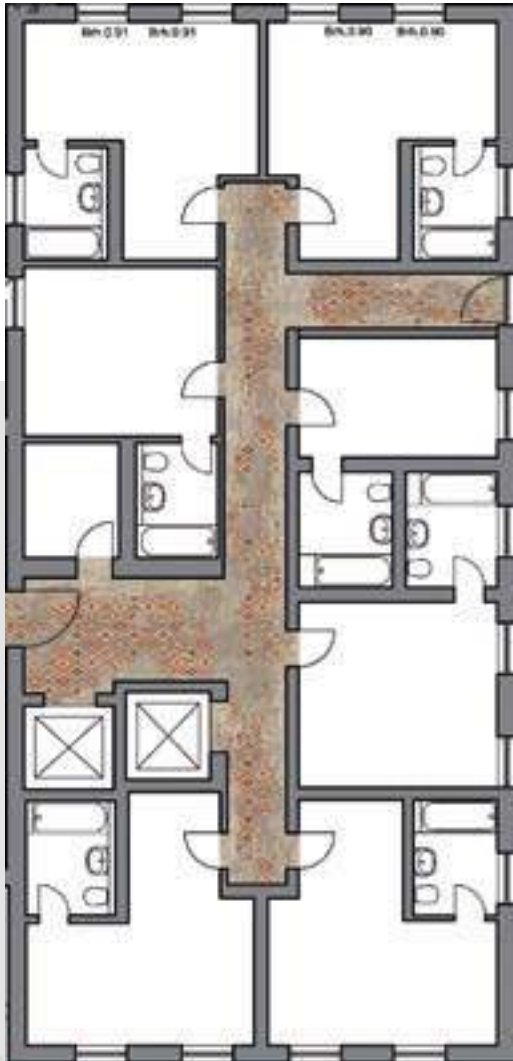
					
KF	KF	KF	KF	KF	KF
9060	9902	9904	8901	8910	6081
					
KF	KF	KF	KF	KF	
5066	5058	7058	6901	6902	







CONCEPT 18



16518-A01







KF 1068	KF 8061	KF 8063	KF 8064	KF 8071	KF 8066
KF 3055	KF 2070	KF 2056			

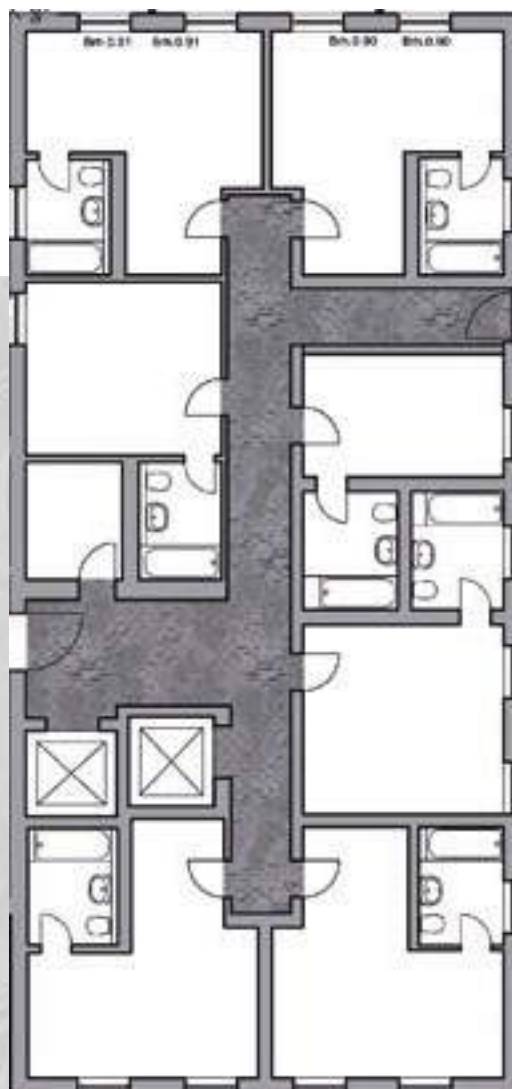
CONCEPT

19

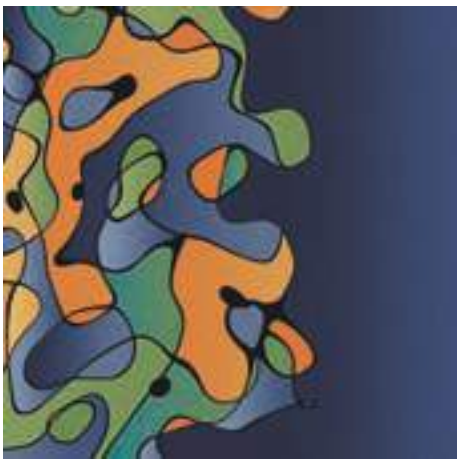


16519-A01

			
KF 9060	KF 9915	KF 9914	KF 9913
			
KF 9918	KF 9912	KF 9924	KF 9925







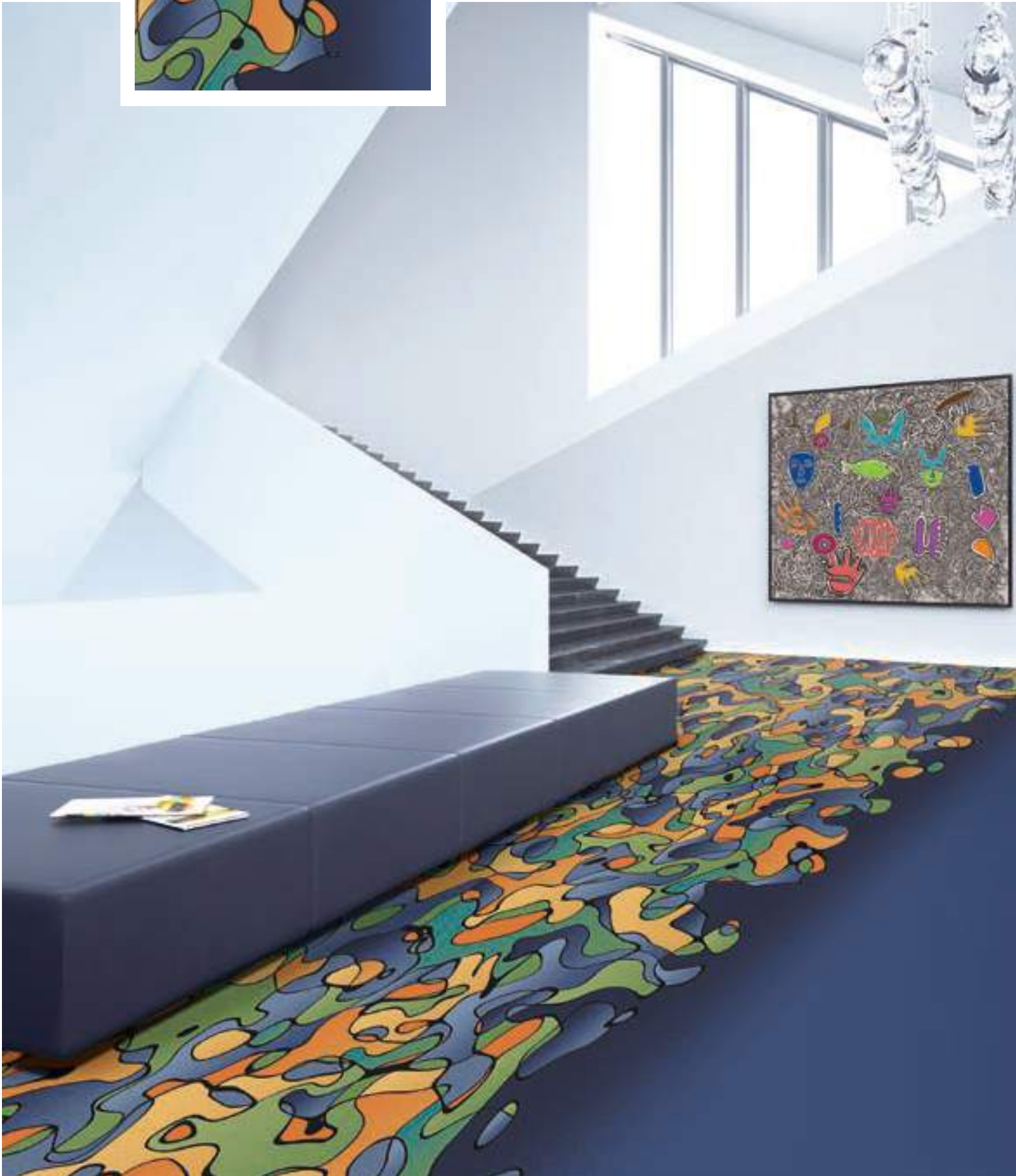
16520-A01



KF 9060 KF 5059 KF 5056 KF 5054 KF 5051

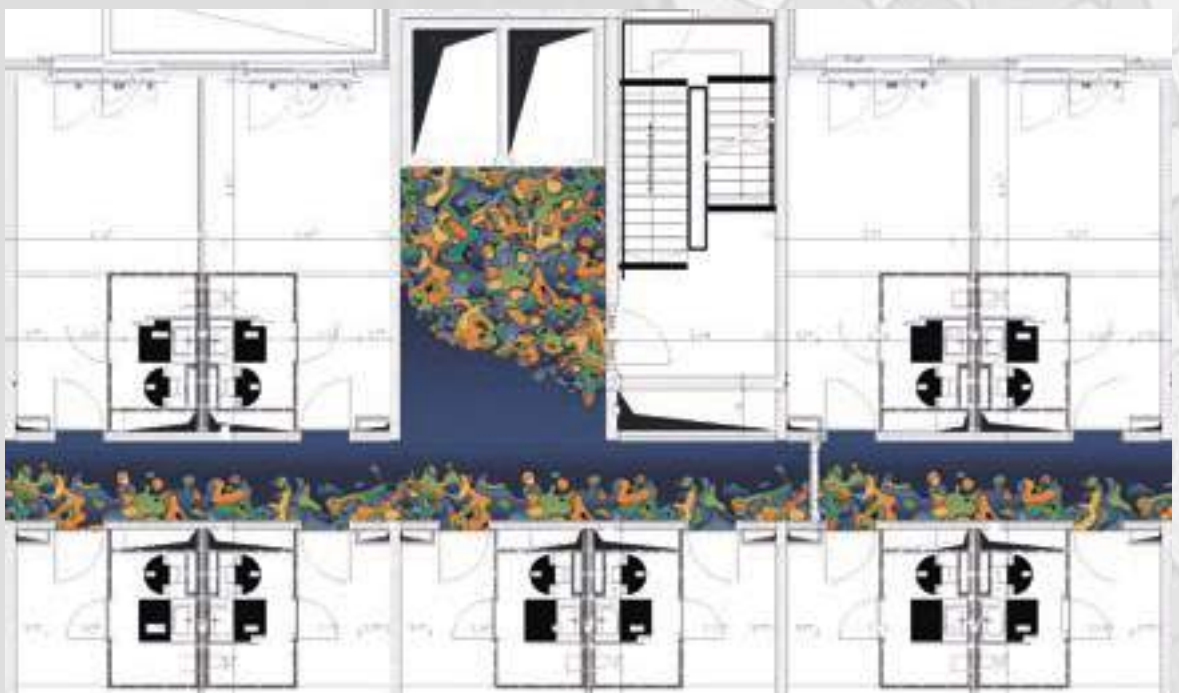


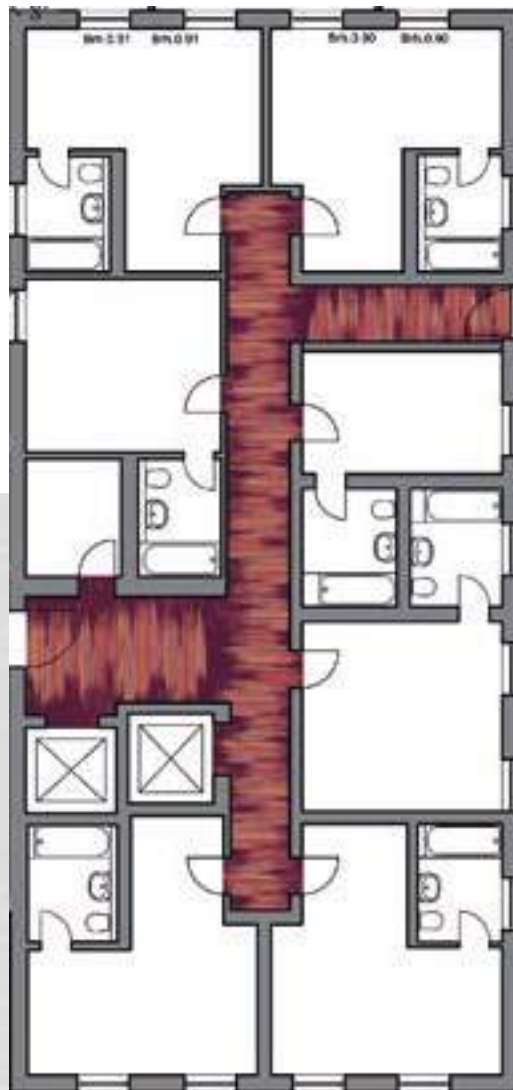
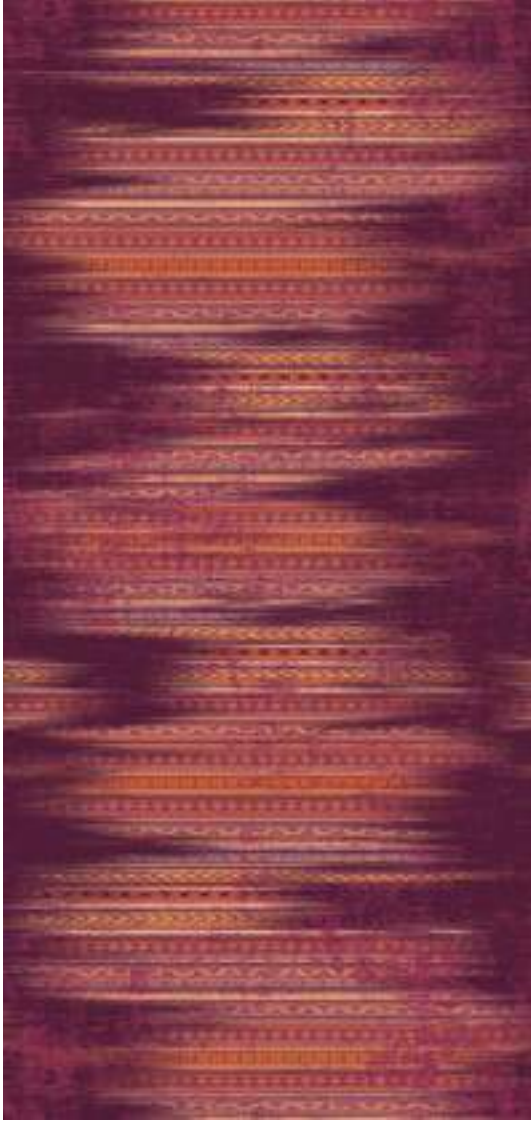
KF 6054 KF 6108 KF 6102 KF 2072 KF 1058 KF 1056



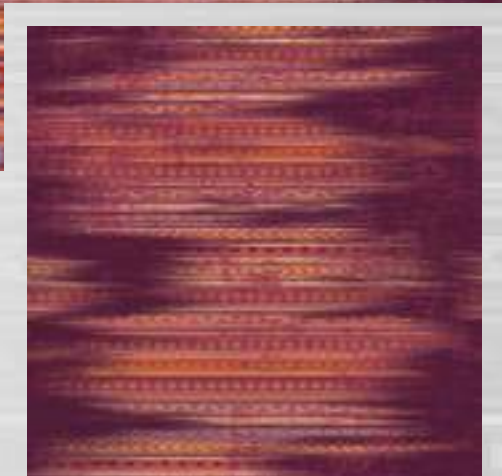


CONCEPT 201



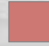









CONCEPT
21















16521-A01

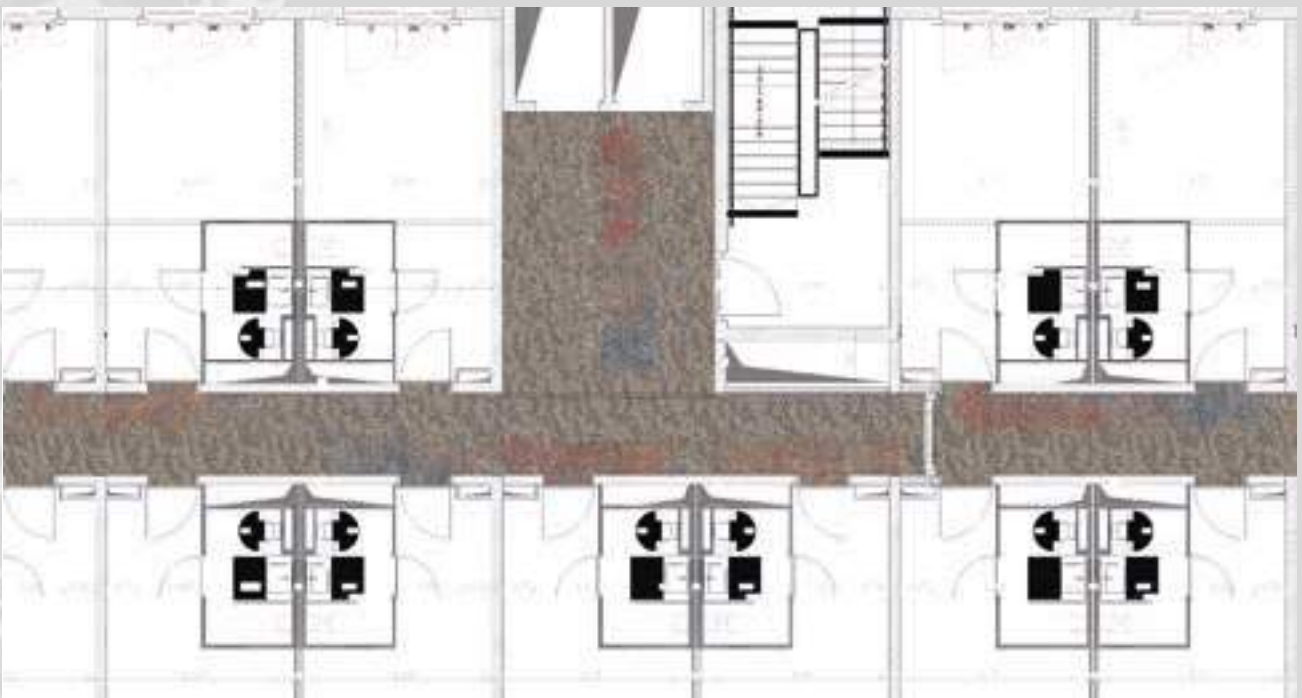
			
KF 4058	KF 4922	KF 4901	KF 4941
			
KF 2910	KF 2052	KF 2072	KF 3053



16522-A01

					
KF 9901	KF 8072	KF 8071	KF 8064	KF 8063	KF 8061
					
KF 3059	KF 3052	KF 2060	KF 5076	KF 5073	KF 5052

CONCEPT 22









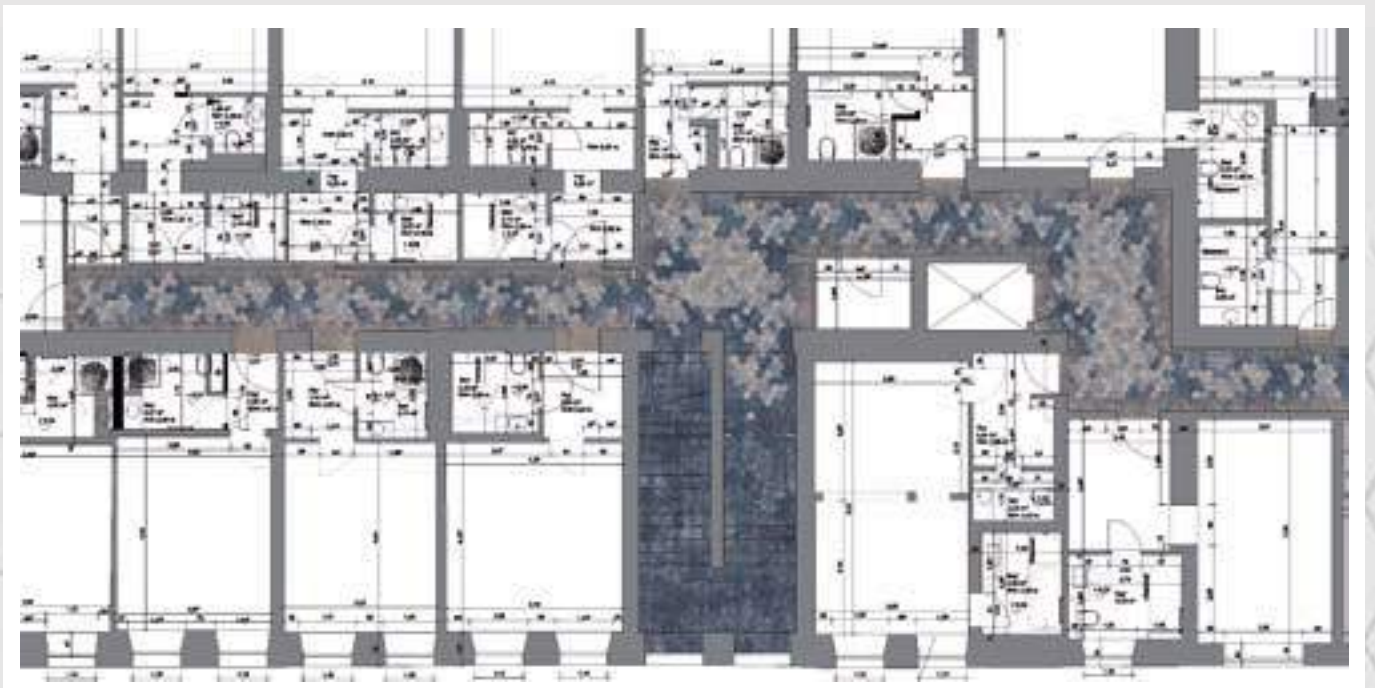
16523-A01

KF 8072	KF 8071	KF 8064	KF 8063	KF 8061
KF 9055	KF 9054	KF 9053	KF 9062	KF 9061



CONCEPT









23

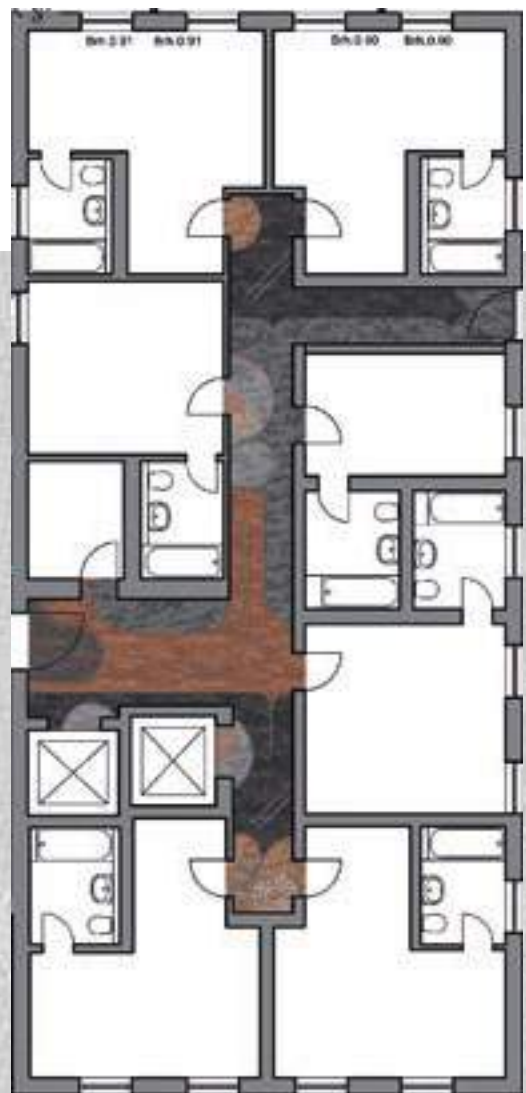


CONCEPT **24**



16524-A01

					
KF 9060	KF 9914	KF 9913	KF 9912	KF 7052	KF 9062
					
KF 9061	KF 9051	KF 8927	KF 2061	KF 8056	KF 8051





CARPET DESIGN GUIDE



Halbmond Teppichwerke GmbH
Brückenstraße 1
D-08606 Oelsnitz, Germany
Tel.: +49 37421-42-0
Fax: +49 37421-42-571
info@halbmond.de
www.halbmond.de



HTW DESIGN CARPET
Mindener Str. 6
D-32049 Herford
Tel.: +49 5221-1779-0
Fax: +49 5221-1779-79
info@htw-designcarpet.de
www.htw-designcarpet.de

