

vertisol

vertisolwall

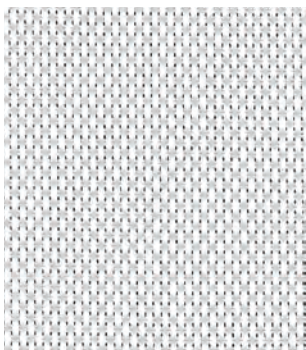
fitnice_

Essential

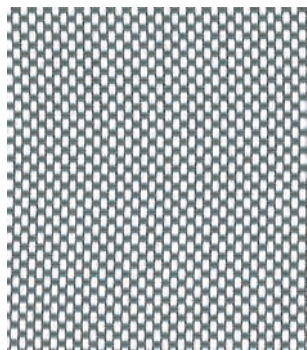
vertisolwall

fitnice_

vertisolwall
Essential Nude



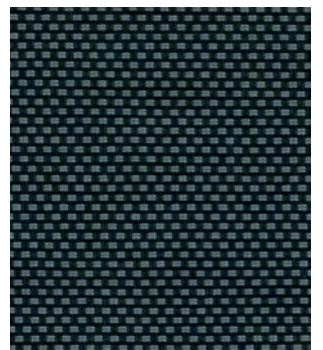
White Pearl



White Grey

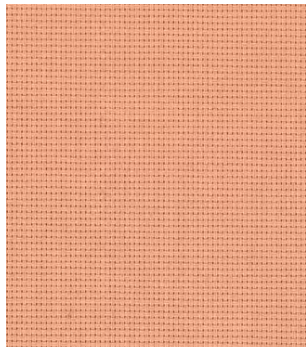


Pearl Grey

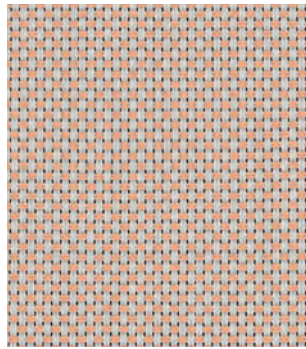


Ebony Grey

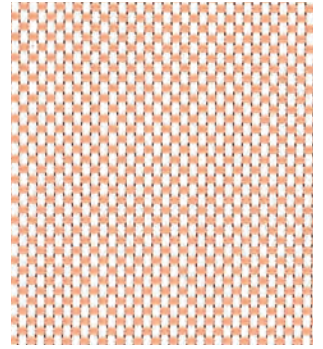
vertisol



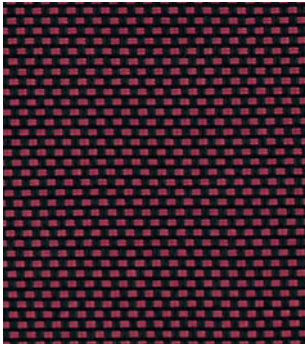
Nude



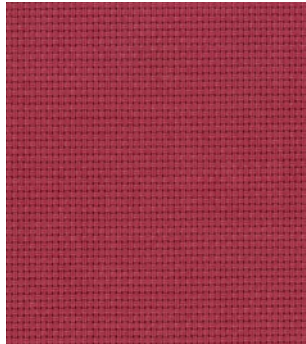
Pearl Nude



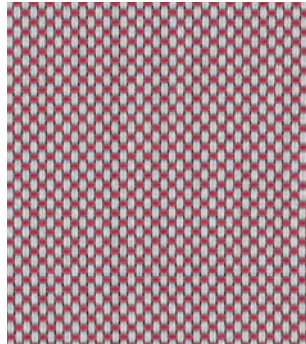
White Nude



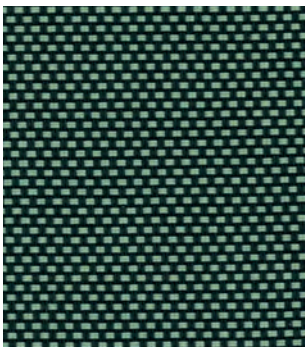
Ebony Brick



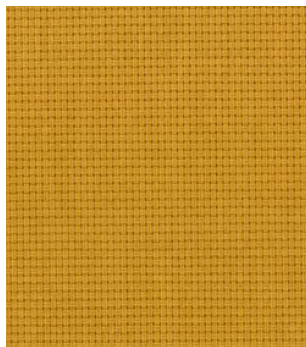
Brick



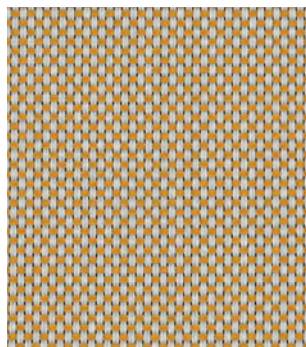
Pearl Brick



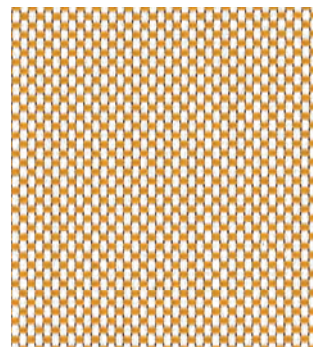
Ebony Grey-Green



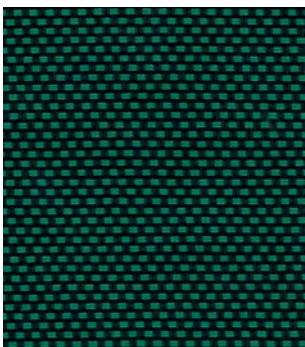
Ochre



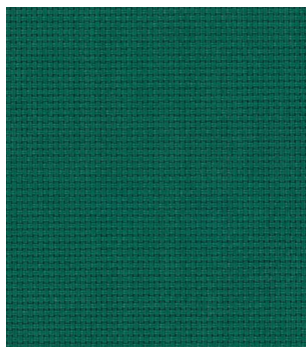
Pearl Ochre



White Ochre



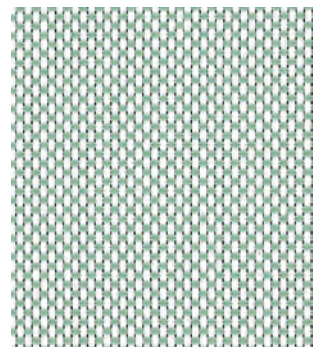
Ebony Pine



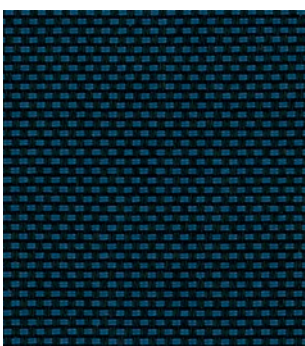
Pine



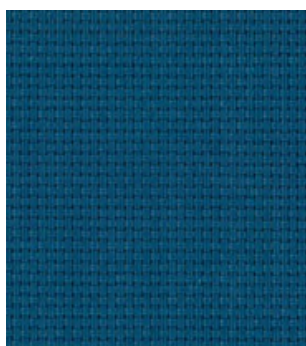
Pearl Grey-Green



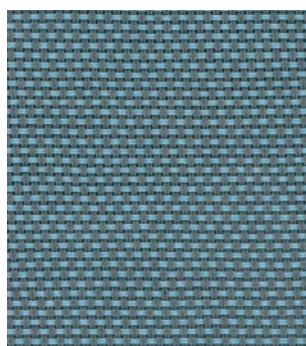
White Grey-Green



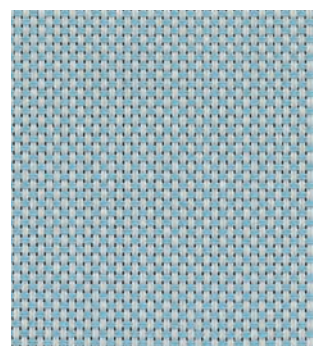
Ebony Petrol



Petrol



Grey Grey-Blue



Pearl Grey-Blue

vertisol

vertisolwall. Woven Vinyl Wall Covering

vertisolwall is the perfect combination between functionality and design. The excellent results obtained with the highest tests have converted vertisolwall into one of the most highly demanded wall covering solutions, for both public spaces and private settings.



The colors in the vertisolwall Collection are compatible with vertisolacoustics.



vertisolwall can be cleaned easily, even by the application of sodium hypochlorite and other detergents.



vertisolwall is textile wall solution with excellent abrasion resistance and great durability.



vertisolwall is product free of phthalates, a component used in certain PVC products and potentially harmful to humans.



vertisolwall has been tested by independent laboratories with satisfactory results in all cases. It complies with the most stringent fire regulations being Bs2d0.



Wide range of colors and textures through our three collections. Each collection has own identity and a color palette specially designed to create projects of all kinds.

Technical Properties

Technical specifications	Standard	Essential Wall*
Composition	-	85% PVC + 15% PES PP Backing
Weight (g/m ²)	-	650±10%
Thickness (mm)	-	0.79±5%
Light Fastness (Blue Scale: 1-8)	UNE EN ISO 105 B02-2002	≥7/8
Fire Classification	EN 13501-1:2007	Bs2d0
Abrasion resistance	EN ISO 12947	>100.000 cycles
Roll Width	-	100 cm
Roll Length	-	9 ml

All specifications are based on average values and may deviate. The values are for guidance and are not contractual subject to technical modifications. The straight weft is not an inherent condition. Weaving technology features color effects because of light, making it an exclusive and unique product. These effects are no ground for claims.

* More vertisolwall colors available. Please contact our sales department.

Certificates



vertisol fabrics can be found in databases such as:

archiproducts[®]



Galileu Galilei, 68 · 08403 Granollers (Barcelona), Spain.
Telf. (+34) 93 840 14 44 · (+34) 93 849 72 19
mkt@vertisol.es

vertisol.com



vertisol

Ed.11 120122

vertisol