

vertisolwall

vertisol

fitnice_

Panama Wall
Memphis Wall
Essential
Wicker Weave Wall
Royal

vertisolwall

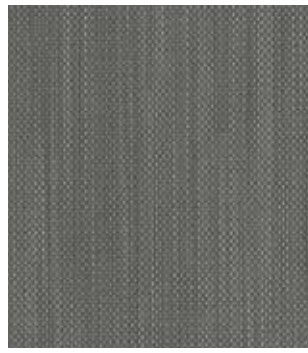
fitnice_

vertisolwall Wicker
Weave Wall Trigo

vertisolwall
Panama Wall Trigo



Panama Tarmac



Panama Terroir



Panama Tortora



Panama Trigo



Memphis Tarmac



Memphis Terroir



Memphis Tortora



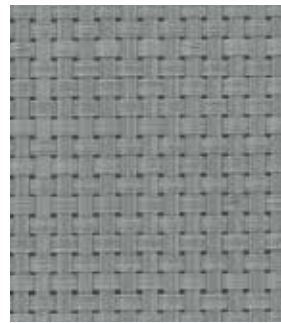
Memphis Trigo



Wicker Weave Tarmac



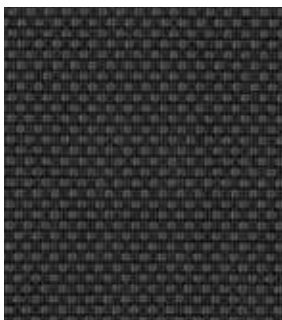
Wicker Weave Terroir



Wicker Weave Tortora



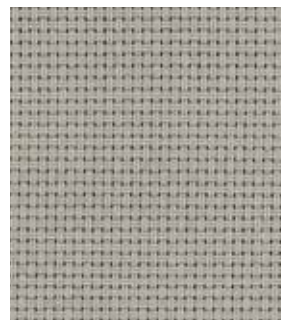
Wicker Weave Trigo



Essential Tarmac



Essential Terroir



Essential Tortora



Essential Trigo

vertisolwall

Advanced Fabrics Coordinated

Based on a contract palette, the shade of this series are available in all **vertisol** architectural textile solutions. **Advanced Fabrics Coordinated** is a comprehensive approach to meet the needs of architects and interior designers alike.



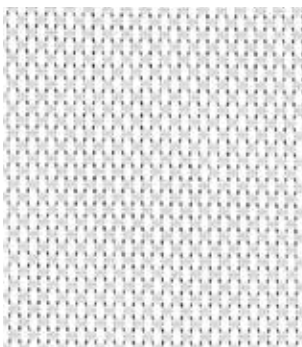
vertisolwall
Royal White



Wicker Weave Afternoon



Wicker Weave Night



Essential White Pearl



Essential White Grey



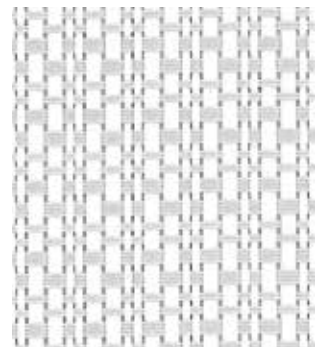
Essential Pearl Grey



Essential Ebony Grey



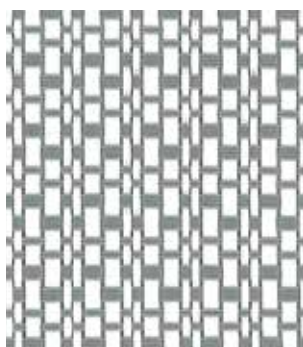
Royal White



Royal White Pearl



Royal White Pebble



Royal White Pewter



Royal Ebony Grey



Royal Ebony Bronze

vertisol

vertisolwall. Woven Vinyl Wall Covering

vertisolwall is the perfect combination between functionality and design. The excellent results obtained with the highest tests have converted fitnice wall into one of the most highly demanded wall covering solutions, for both public spaces and private settings.



The tones in the **Advanced Fabrics Coordinated** series can be found in all vertisol's textile solutions for architecture.



vertisolwall can be cleaned easily, even by the application of sodium hypochlorite and other detergents.



vertisolwall is textile wall solution with excellent abrasion resistance and great durability.



vertisolwall is product free of phthalates, a component used in certain PVC products and potentially harmful to humans.



vertisolwall has been tested by independent laboratories with satisfactory results in all cases. It complies with the most stringent fire regulations being Bs2d0.



Wide range of colors and textures through our three collections. Each collection has own identity and a color palette specially designed to create projects os all kinds.

Technical Properties

Technical

| Characteristics | Standard | Memphis Wall | Panama Wall | Wicker Weave Wall | Royal | Essential* |
|-------------------------------------|---------------------------|------------------------------------|------------------------------------|------------------------------------|------------------------------------|------------------------------------|
| Composition | - | 80% PVC + 20% PES PP Backing | 80% PVC + 20% PES PP Backing | 85% PVC + 15% PES PP Backing | 85% PVC + 15% PES PP Backing | 85% PVC + 15% PES PP Backing |
| Weight (g/m ²) | UNE EN 12127 | 415±10% | 437±10% | 888±10% | 635±10% | 650±10% |
| Thikness (mm) | UNE EN ISO 5084:1997 | 0.65±10% | 0.59±10% | 1.23±5% | 0.83±5% | 0.79±5% |
| Light Fastness (Blue Scale: 1-8) | UNE EN ISO 105 (B02-2002) | ≥7/8 | ≥7/8 | ≥7/8 | ≥7/8 | ≥7/8 |
| Fire Classification | EN 13501-1:2007 | Bs2d0 | Bs2d0 | Bs3d0 | Bs2d0 | Bs2d0 |
| Abrasion resistance | UNE EN ISO 12947 | >100.000 cycles | >100.000 cycles | >100.000 cycles | >100.000 cycles | >100.000 cycles |
| Roll Width | - | 100 cm | 100 cm | 100 cm | 100 cm | 100 cm |
| Roll Length | - | 9 ml | 9 ml | 9 ml | 9 ml | 9 ml |

* More vertisolwall colors available. Please contact our sales department.

** The colors in the vertisolwall Collection are compatible with vertisolacoustic.

All specifications are based on average values and may deviate. The values are for guidance and are not contractual subject to technical modifications. The straight weft is not an inherent condition. Weaving technology features color effects because of light, making it an exclusive and unique product. Also bicolour yarns create a randomly harmonious effect. These effects are no ground for claims.

Certificates



vertisol fabrics can be found in databases such as:

archello

archiproducts®



Galileu Galilei, 68 · 08403 Granollers (Barcelona), Spain.
Telf. (+34) 93 840 14 44 · (+34) 93 849 72 19
mkt@vertisol.es

vertisol.com



vertisol

Ed.11 120122

vertisol