

quick STEP 2





quick STEP 2 COLLECTION

de Um den Quickstep immer wieder neu zu entdecken und weiterzuentwickeln, muss ein guter Tänzer ihn sicher beherrschen. Er gilt als der fröhlichste und lebendigste unter den Turniertänzen und zeichnet sich durch schnelle, kontrollierte und fließende Bewegungen aus. Dieser Tanz ist eine eigenwillige Mischung aus dynamischen Schritten, einem schnellen Tempo und fortlaufenden Wechseln.

In der Quickstep Collection von Halbmond spiegelt sich diese Dynamik wider. Mit 36 zeitlosen Designs in je 6 Farbvarianten, einem schnellen Musterservice und kurzen Lieferzeiten, bietet Ihnen diese Kollektion ein Höchstmaß an Flexibilität.

- 900 g/m² Markenpolyamid für höchsten Anspruch
- Produziert mit modernster Chromojet-Technologie
- 36 Designs aller Art
- 6 Farboptionen pro Design
- Unkomplizierte Auswahl
- Einfach zu bestellen
- Schneller Musterservice
- Kurze Lieferzeiten
- Wettbewerbsfähige Preise

en In order to continually rediscover and refine the quickstep, a good dancer must have a firm command of it. It is regarded as the most cheerful and animated ballroom dance and is characterised by swift, controlled and fluid movements. The dance is a distinctive mix of dynamic steps, a fast tempo and successive changes.

This dynamism is reflected in Halbmond's Quickstep Collection. With 36 classic designs in each of the six colour combinations, a fast sample service and speedy delivery times, this collection offers you the maximum degree of flexibility.

- 900 g/m² branded polyamide for the highest demands
- Manufactured by the latest Chromojet technology
- 36 designs of any kind
- 6 colour combinations per design
- Straightforward choice
- Easy to order
- Fast sample service
- Quick delivery times
- Competitive prices

fr Pour redécouvrir et faire évoluer sans cesse le Quickstep, un bon danseur doit bien sûr le maîtriser. Parmi les danses de compétition, cette danse est considérée comme la plus joyeuse et la plus vivante, et se caractérise par des mouvements rapides, contrôlés et fluides. Cette danse mélange de façon originale pas dynamiques, tempo rapide et changement continu.

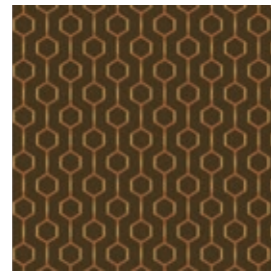
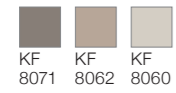
Cette dynamique se reflète dans la collection Quickstep d'Halbmond. Avec 36 modèles intemporels, chacun décliné dans six couleurs différentes, un service d'échantillons rapide et des délais de livraison courts, cette collection vous offre une grande flexibilité.

- 900 g/m² en polyamide de marque pour répondre aux exigences les plus élevées
- Fabriqué grâce à la technologie de pointe Chromojet
- 36 modèles dans tous les genres
- 6 couleurs au choix par modèle
- Sélection aisée
- Facile à commander
- Service d'échantillons rapide
- Courts délais de livraison
- Prix compétitifs

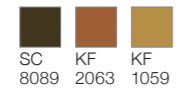




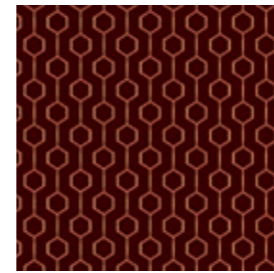
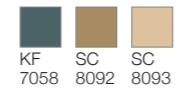
Q50-1



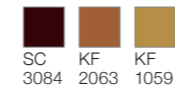
Q50-2



Q50-4



Q50-5



Q50-6



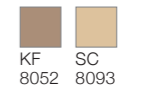
Q50-3



Repeat appr. 16,7 x 16 cm
Detail appr. 100 x 100 cm



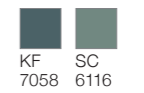
Q51-1



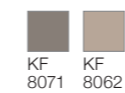
Q51-3



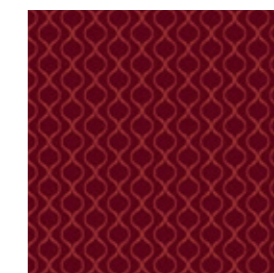
Q51-4



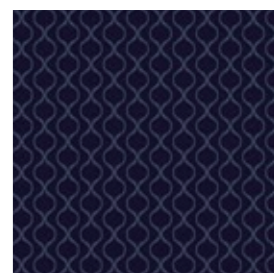
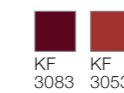
Q51-2



Repeat appr. 16,7 x 11 cm
Detail appr. 100 x 100 cm



Q51-5

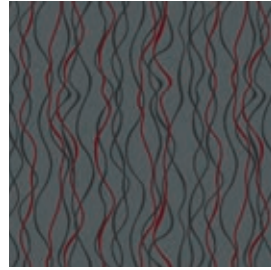


Q51-6

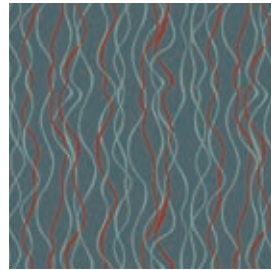




Q52-1
 SC 9065 KF 8071 KF 8062



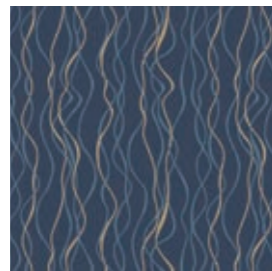
Q52-3
 SC 9064 SC 9065 KF 3083



Q52-4
 KF 7058 SC 6116 KF 3053



Q52-5
 KF 3083 KF 8072 KF 8071

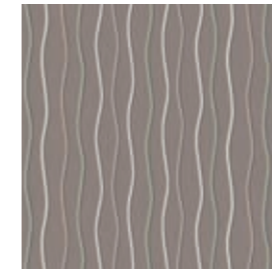


Q52-6
 KF 5058 KF 5073 SC 8092

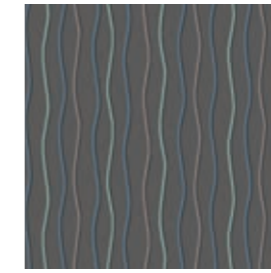


Q52-2
 KF 8072 SC 6116 SC 8092

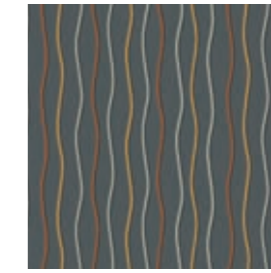
Repeat appr. 66,7 x 65,7 cm
 Detail appr. 100 x 100 cm



Q53-1
 KF 8072 KF 8071 KF 8062 KF 8060 SC 9067



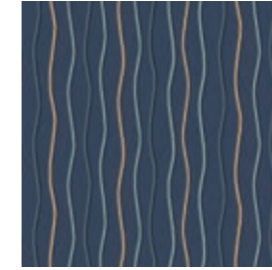
Q53-2
 SC 9064 KF 8072 KF 8071 SC 6116 KF 5073



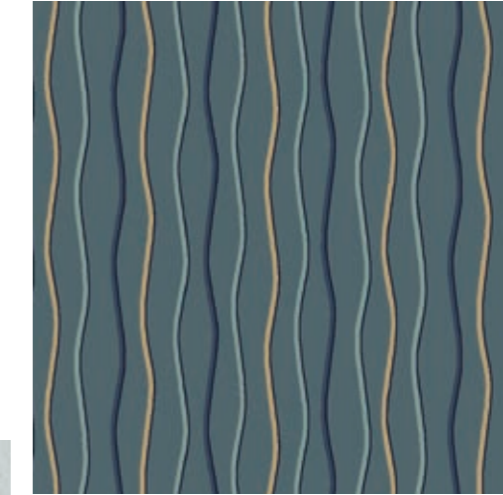
Q53-3
 SC 9064 SC 9065 SC 9067 KF 1059 KF 2063



Q53-5
 SC 9064 KF 3083 SC 9065 SC 9066 SC 9067



Q53-6
 KF 5067 KF 5058 KF 7058 SC 6116 SC 8092



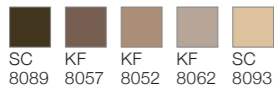
Q53-4
 KF 5067 KF 5058 KF 7058 SC 6116 SC 8092

Repeat appr. 66,7 x 32,8 cm
 Detail appr. 100 x 100 cm





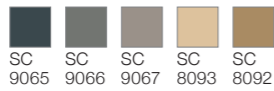
Q54-2



SC 8089 KF 8057 KF 8052 KF 8062 SC 8093



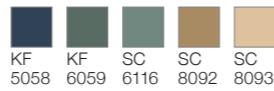
Q54-3



SC 9065 SC 9066 SC 9067 SC 8093 SC 8092



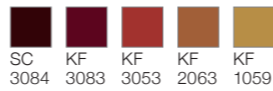
Q54-4



KF 5058 KF 6059 SC 6116 SC 8092 SC 8093



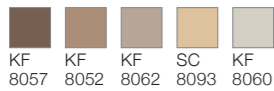
Q54-5



SC 3084 KF 3083 KF 3053 KF 2063 KF 1059



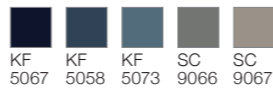
Q54-1



KF 8057 KF 8052 KF 8062 SC 8093 KF 8060

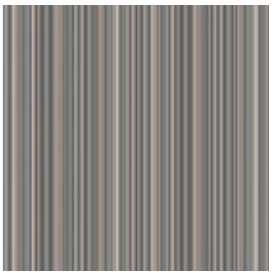


Q54-6



KF 5067 KF 5058 KF 5073 SC 9066 SC 9067

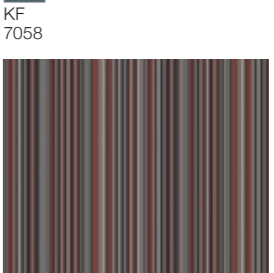
Repeat appr. 66,7 x 65,7 cm
Detail appr. 100 x 100 cm



Q55-1



KF 8072 KF 8071 KF 8062 KF 8060 SC 6116



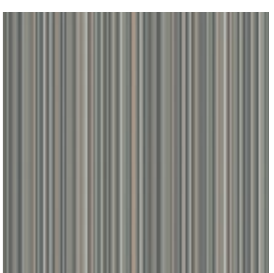
Q55-2



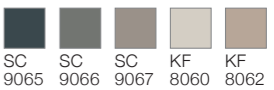
SC 9064 KF 8072 KF 8071 KF 8062 KF 3053



KF 3083



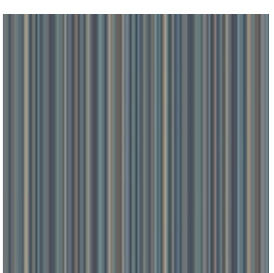
Q55-3



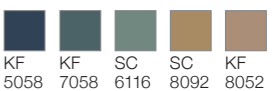
SC 9065 SC 9066 SC 9067 KF 8060 KF 8062



KF 8052



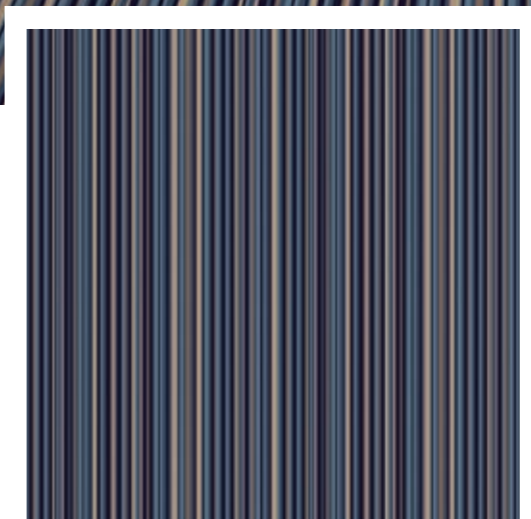
Q55-4



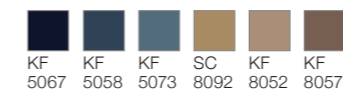
KF 5058 KF 7058 SC 6116 SC 8092 KF 8052



KF 8057

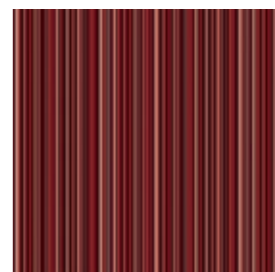


Q55-6

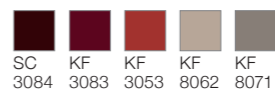


KF 5067 KF 5058 KF 5073 SC 8092 KF 8052 KF 8057

Repeat appr. 50 x 50 cm
Detail appr. 100 x 100 cm



Q55-5



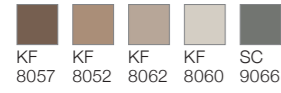
SC 3084 KF 3083 KF 3053 KF 8062 KF 8071



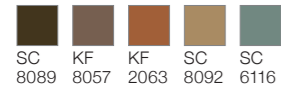
KF 8072



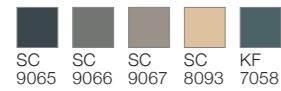
Q56-1



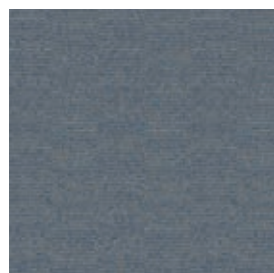
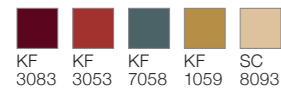
Q56-2



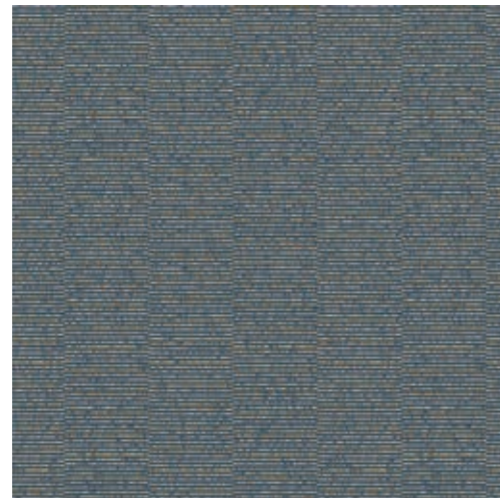
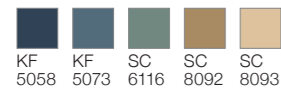
Q56-3



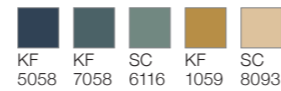
Q56-5



Q56-6



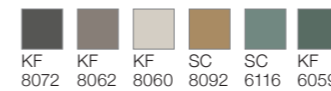
Q56-4



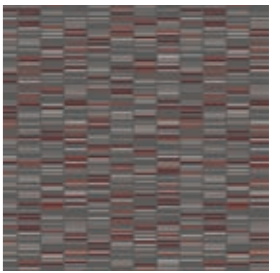
Repeat appr. 66,7 x 65,7 cm
Detail appr. 100 x 100 cm



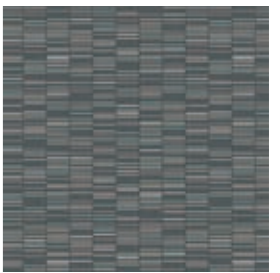
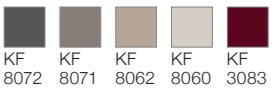
Q57-1



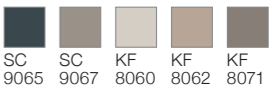
Repeat appr. 66,7 x 72,4 cm
Detail appr. 100 x 100 cm



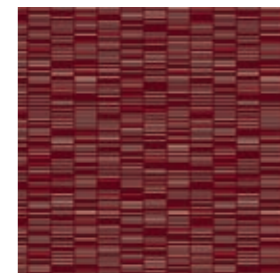
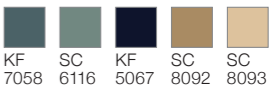
Q57-2



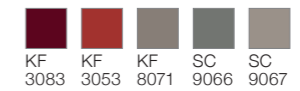
Q57-3



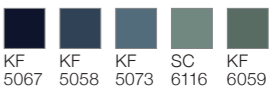
Q57-4

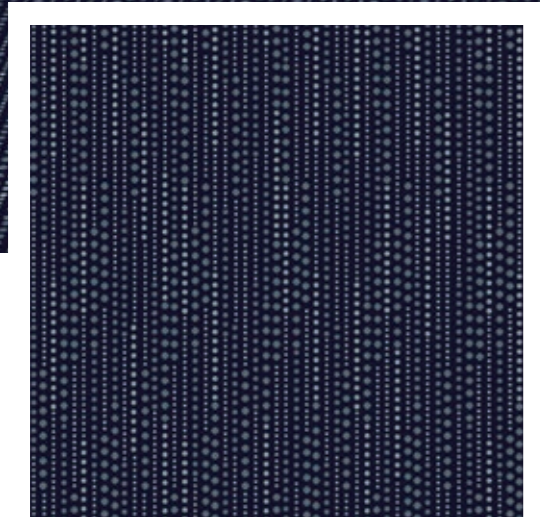
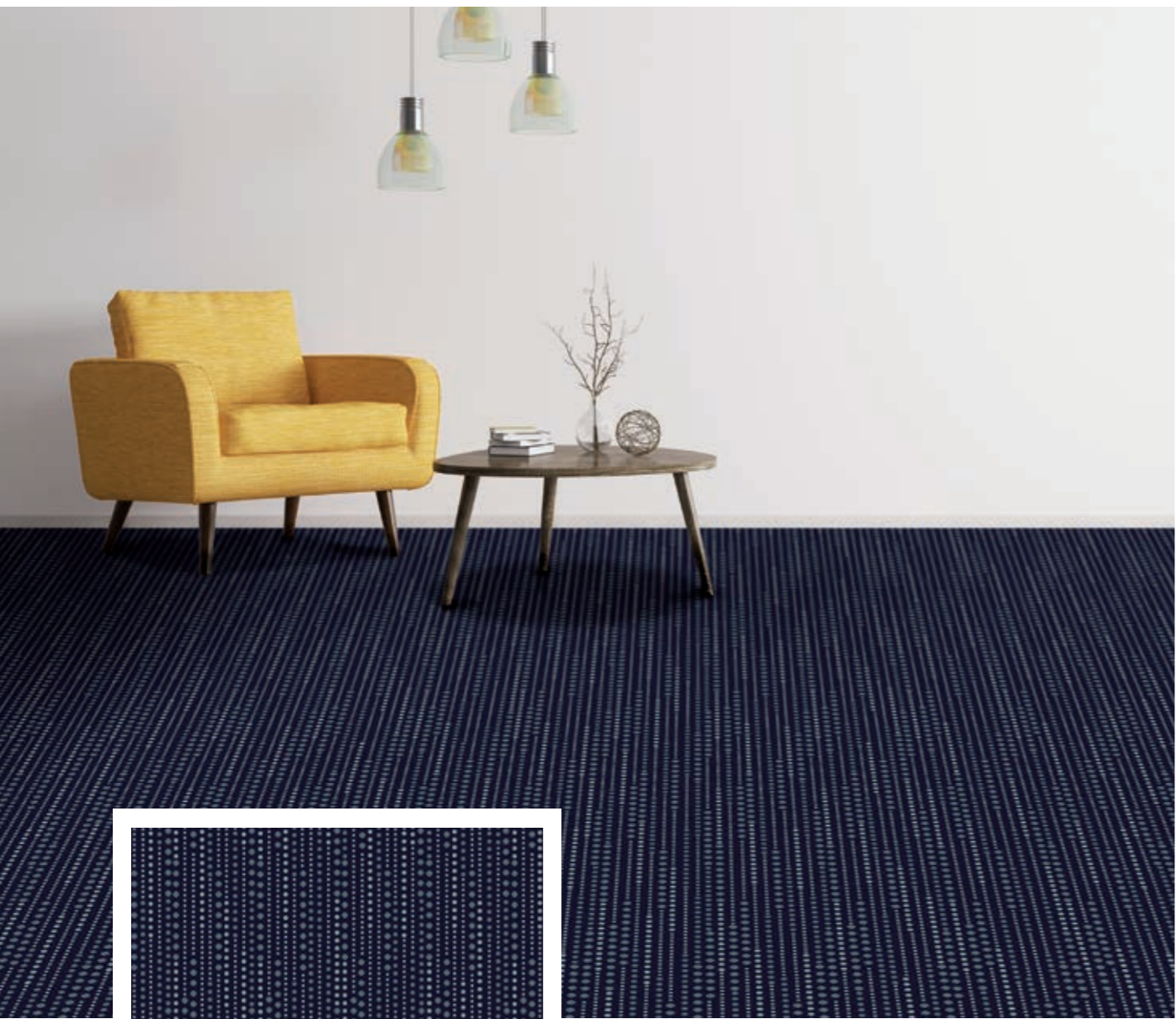


Q57-5



Q57-6



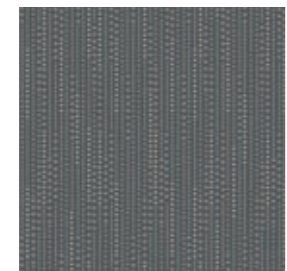


Q58-6
 KF KF SC
 5067 7058 6116

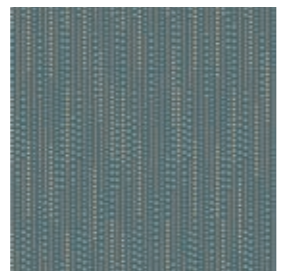
Repeat appr. 100 x 98,5 cm
 Detail appr. 100 x 100 cm



Q58-2
 KF KF KF
 8072 8071 8062



Q58-3
 SC KF KF
 9065 8071 8062



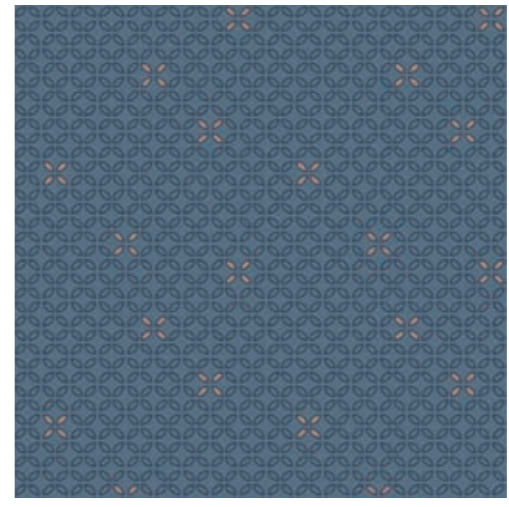
Q58-4
 KF SC SC
 7058 6116 8093



Q58-5
 SC KF KF
 3084 3083 3053

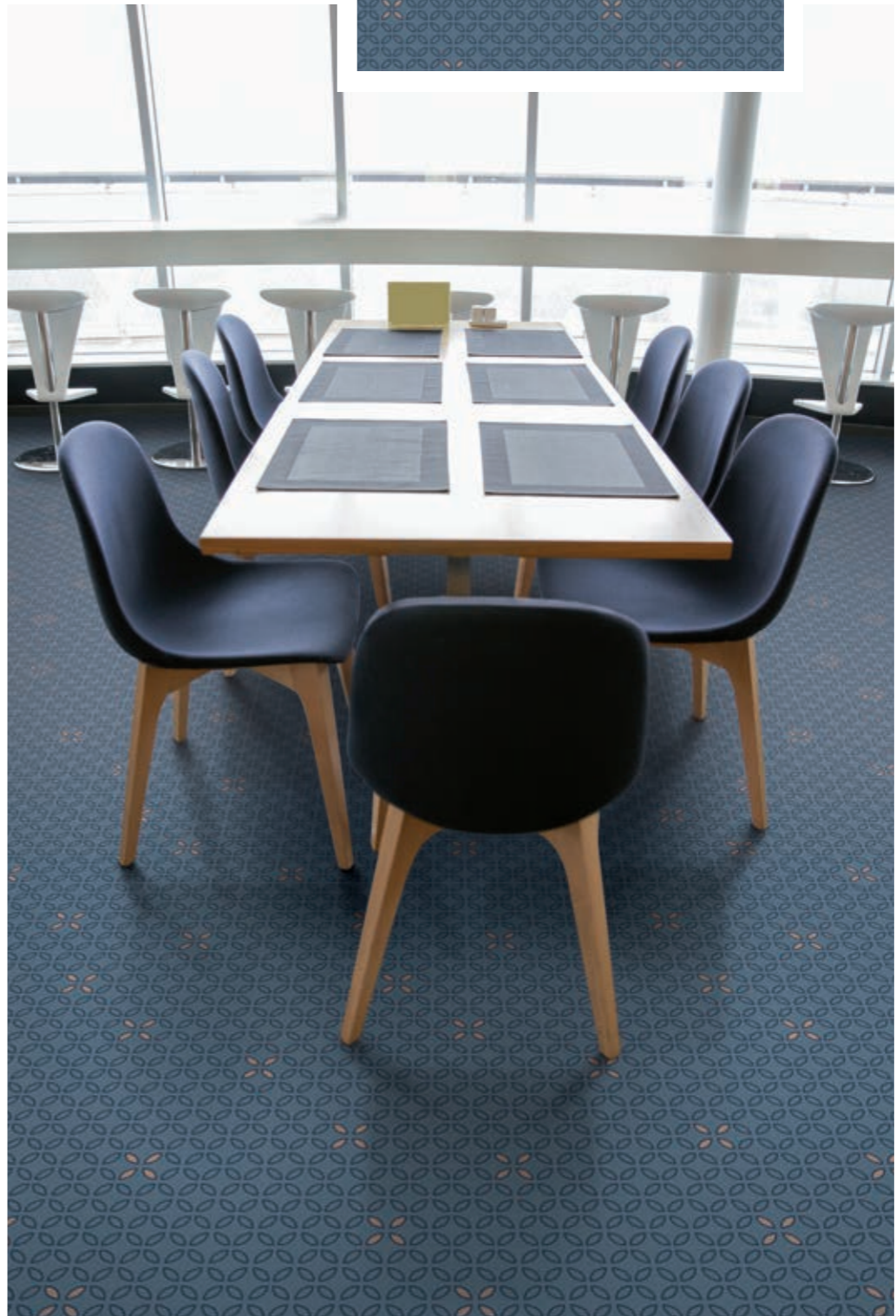


Q58-1
 KF KF KF
 8071 8062 8060



Q59-6
 KF KF KF
 5058 5073 8052

Repeat appr. 50 x 49,2 cm
 Detail appr. 100 x 100 cm



Q59-1
 KF KF SC
 8072 8071 6116



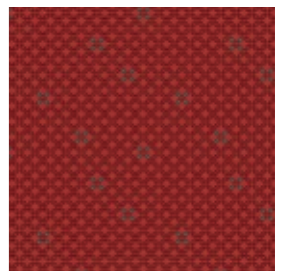
Q59-2
 SC KF KF
 9064 8072 8052



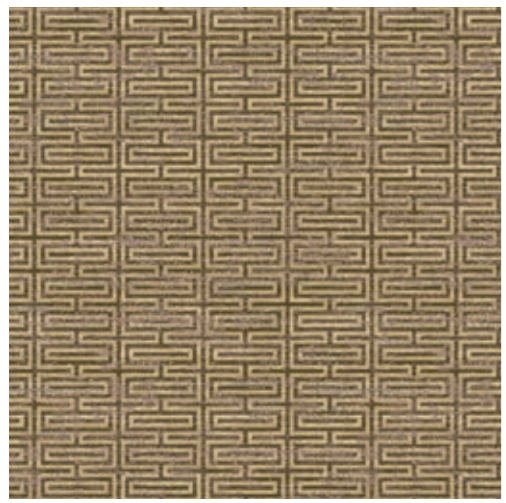
Q59-3
 SC SC KF
 9065 9066 2063



Q59-4
 KF KF SC
 5058 6059 8092



Q59-5
 SC KF KF
 3084 3053 7058



Q60-2

SC	KF	KF	KF	SC
8089	8057	8052	8071	8092

SC 8093

Repeat appr. 66,7 x 64,8 cm
Detail appr. 100 x 100 cm



Q60-1

KF	KF	KF	KF	KF
8072	8071	8052	8062	8060



Q60-3

SC	SC	SC	KF	SC
9065	9066	9067	8052	8092

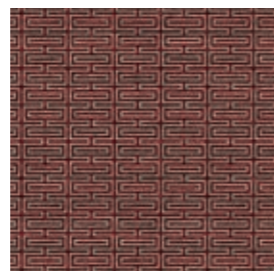
SC 8093



Q60-4

KF	KF	SC	KF	SC
7058	6059	6116	8052	8092

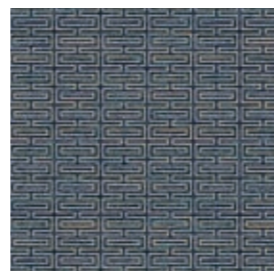
SC 8093



Q60-5

SC	KF	KF	SC	SC
3084	3083	3053	9065	9066

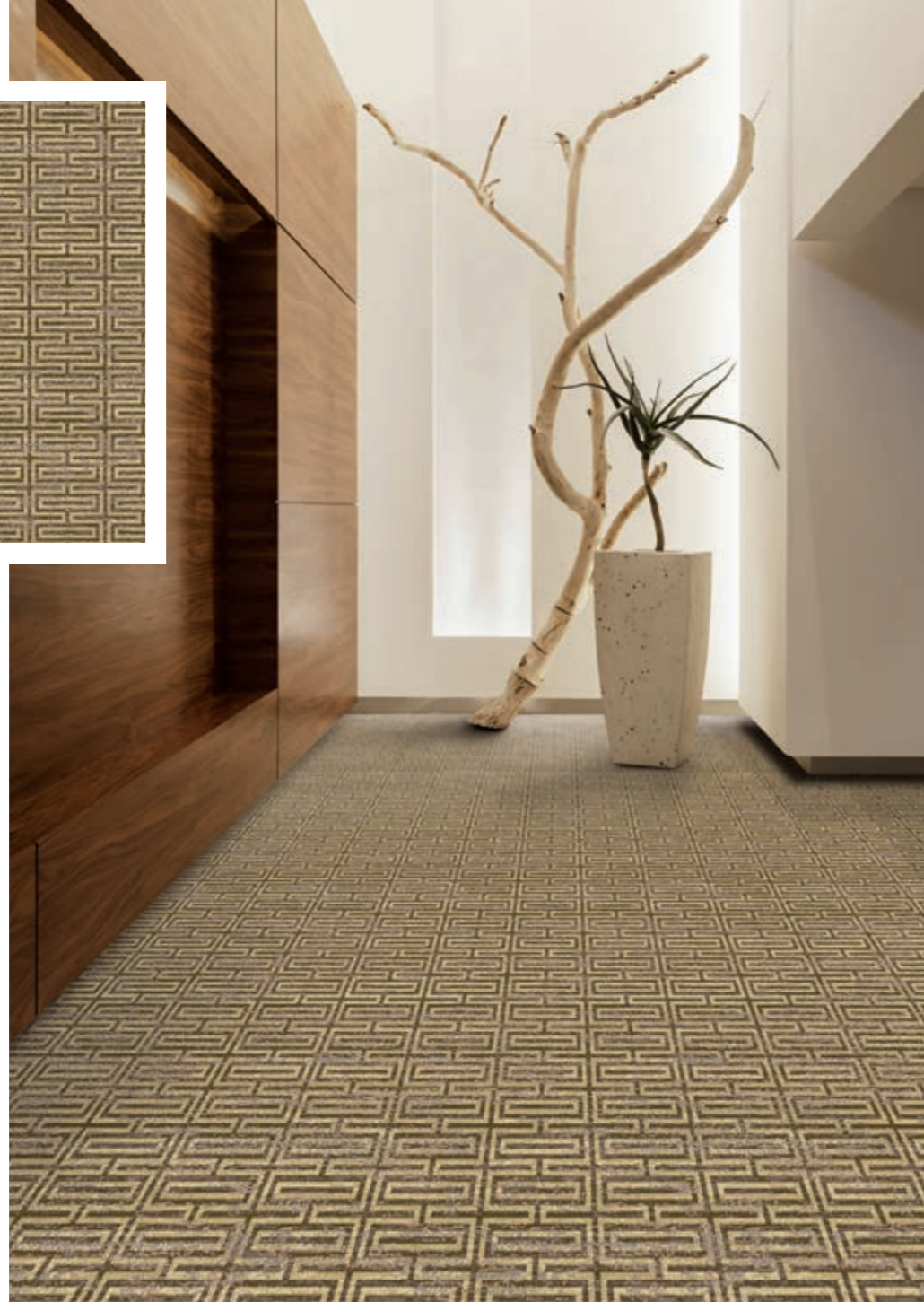
SC 9067



Q60-6

KF	KF	KF	KF	SC
5067	5058	5073	7058	6116

SC 8092



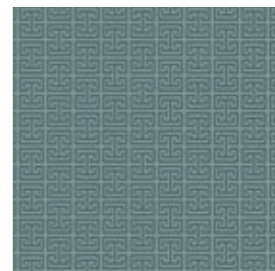
Q61-1

KF	KF
8071	8062



Q61-2

KF	KF
8072	8071



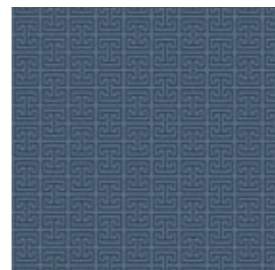
Q61-4

KF	SC
7058	6116



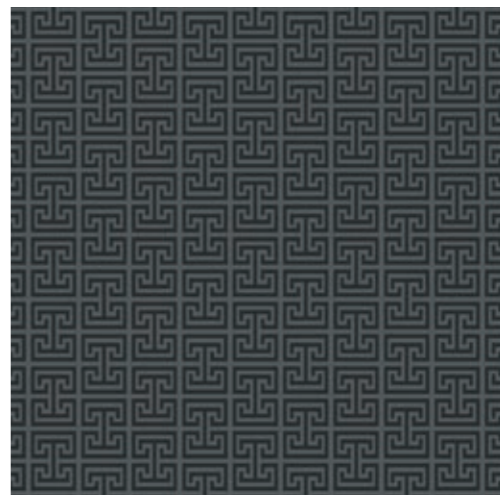
Q61-5

KF	KF
5067	3083



Q61-6

KF	KF
5058	5073

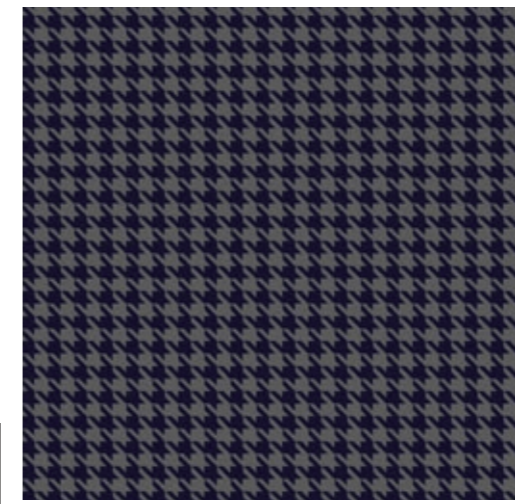
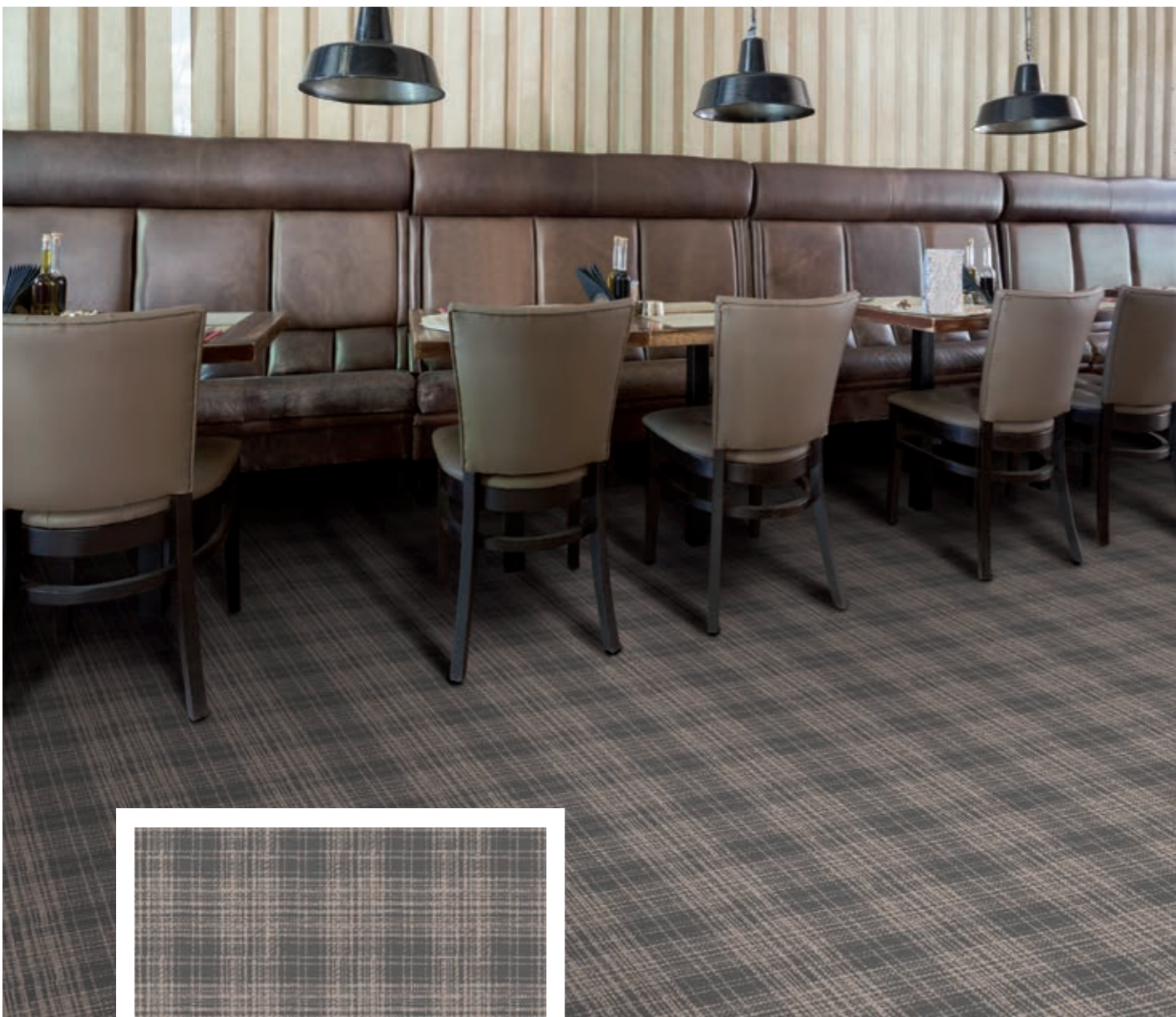


Q61-3

SC	SC
9064	9065

Repeat appr. 20 x 12,6 cm
Detail appr. 100 x 100 cm

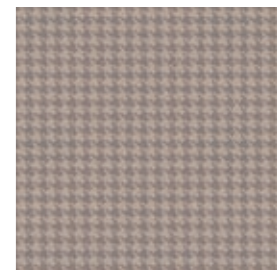




Q63-6

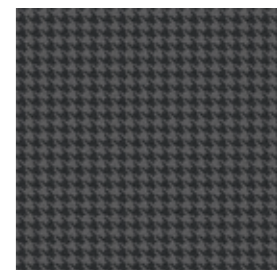
KF 5067 KF 8072

Repeat appr. 5,0 x 4,9 cm
Detail appr. 100 x 100 cm



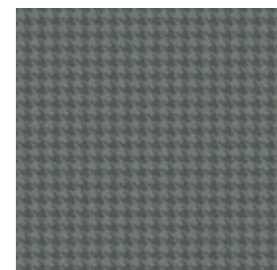
Q63-1

KF 8071 KF 8062



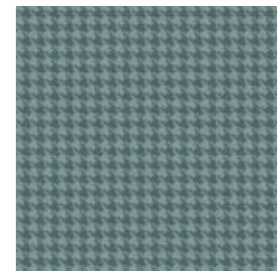
Q63-2

SC 9064 KF 8072



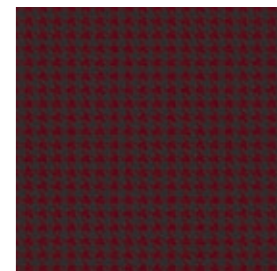
Q63-3

SC 9065 SC 9066



Q63-4

KF 7058 SC 6116



Q63-5

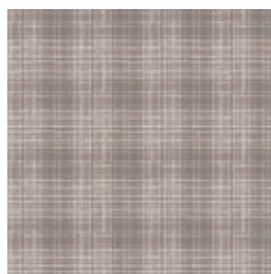
SC 9064 KF 3083



Q62-2

KF 8072 KF 8071 KF 8062

Repeat appr. 50 x 49,2 cm
Detail appr. 100 x 100 cm



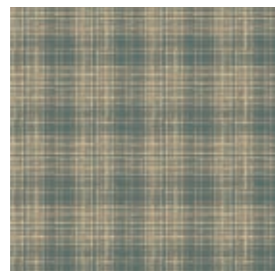
Q62-1

KF 8071 KF 8062 KF 8060



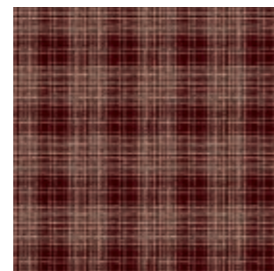
Q62-3

SC 9065 KF 8071 KF 8062



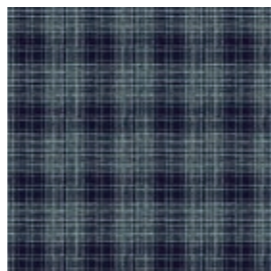
Q62-4

KF 6059 KF 8052 SC 8093



Q62-5

SC 3084 KF 8057 KF 8052

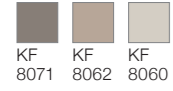


Q62-6

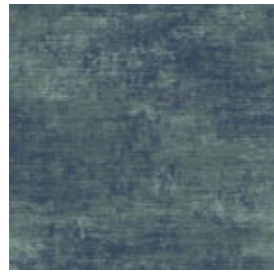
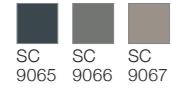
KF 5067 KF 7058 SC 6116



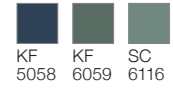
Q64-1



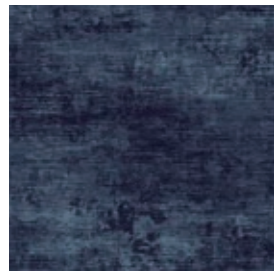
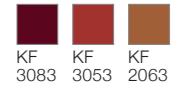
Q64-3



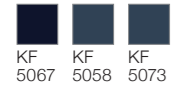
Q64-4



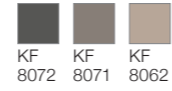
Q64-5



Q64-6



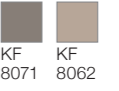
Q64-2



Repeat appr. 133,3 x 131,3 cm
Detail appr. 100 x 100 cm



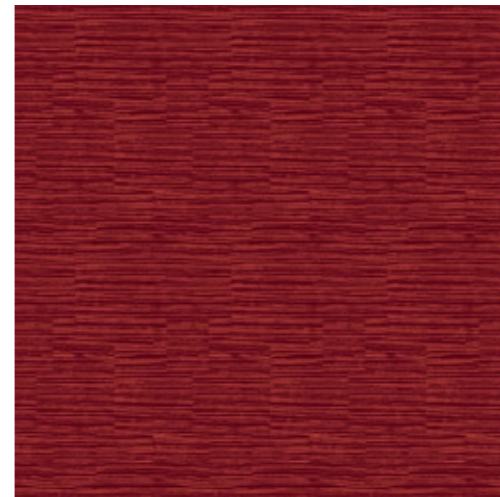
Q65-1



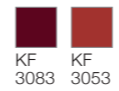
Q65-2



Q65-3



Q65-5



Repeat appr. 30,8 x 47,4 cm
Detail appr. 100 x 100 cm



Q65-4



Q65-6

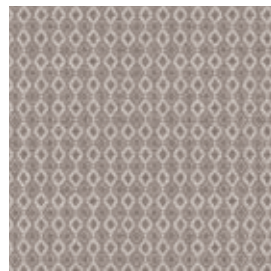




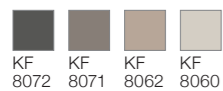
Q66-2



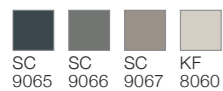
Repeat appr. 50 x 49,2 cm
Detail appr. 100 x 100 cm



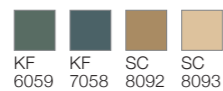
Q66-1



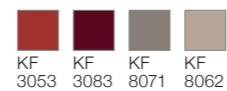
Q66-3



Q66-4



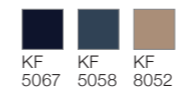
Q66-5



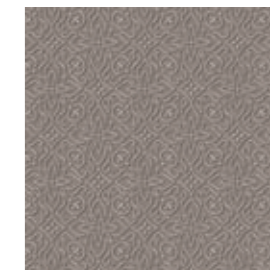
Q66-6



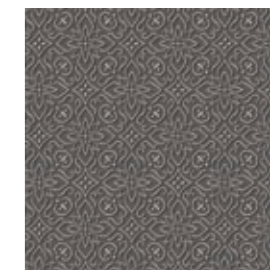
Q67-6



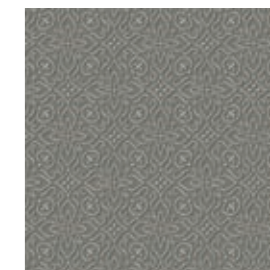
Repeat appr. 33,3 x 32,8 cm
Detail appr. 100 x 100 cm



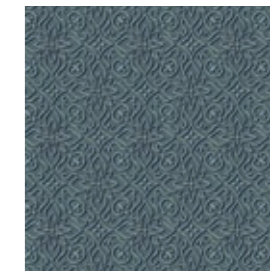
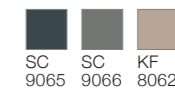
Q67-1



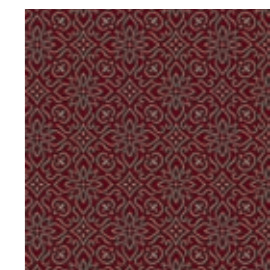
Q67-2



Q67-3



Q67-4



Q67-5

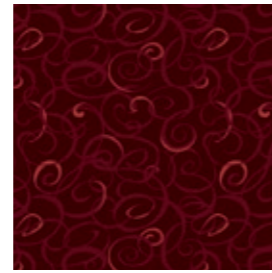
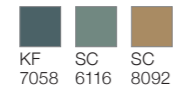




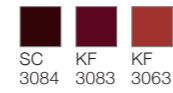
Q68-2



Q68-4



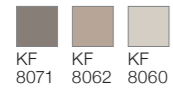
Q68-5



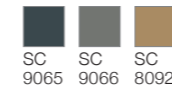
Q68-6



Q68-1



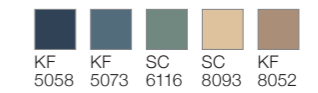
Q68-3



Repeat appr. 66,7 x 65,7 cm
Detail appr. 100 x 100 cm



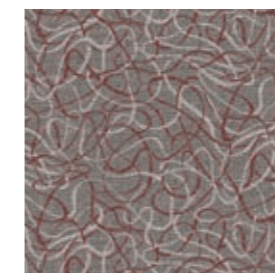
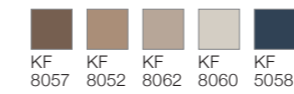
Q69-6



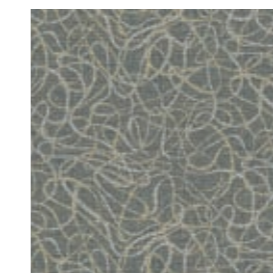
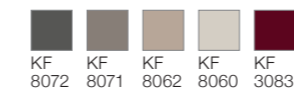
Repeat appr. 133,3 x 73 cm
Detail appr. 100 x 100 cm



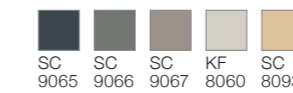
Q69-1



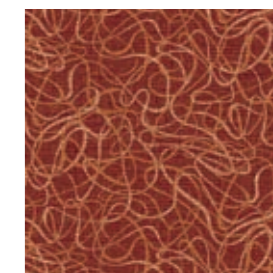
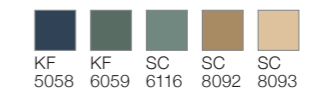
Q69-2



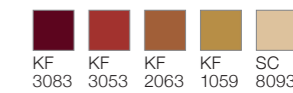
Q69-3



Q69-4

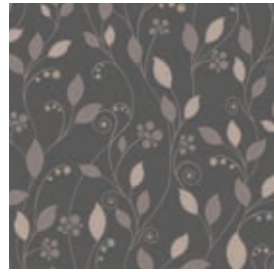
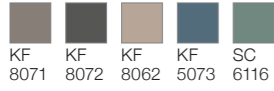


Q69-5

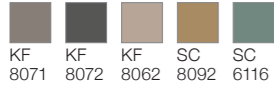




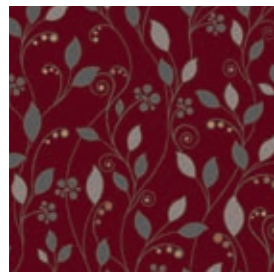
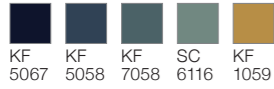
Q70-1



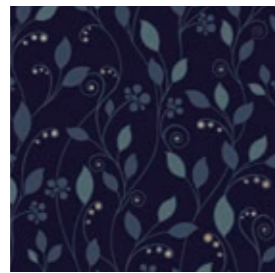
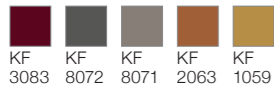
Q70-2



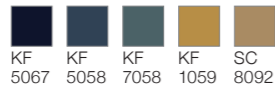
Q70-4



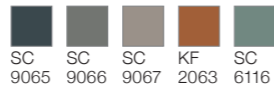
Q70-5



Q70-6



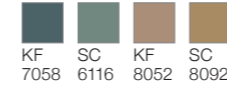
Q70-3



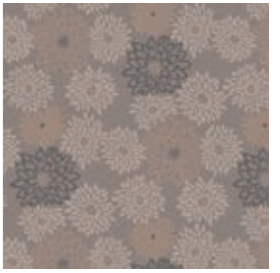
Repeat appr. 100 x 100 cm
Detail appr. 100 x 100 cm



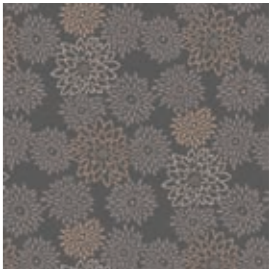
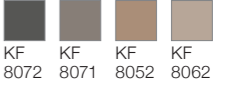
Q71-4



Repeat appr. 80 x 78,7 cm
Detail appr. 100 x 100 cm



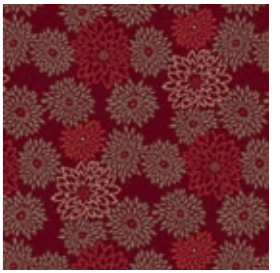
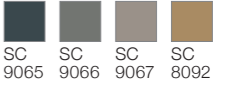
Q71-1



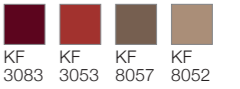
Q71-2



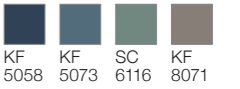
Q71-3



Q71-5

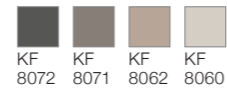


Q71-6

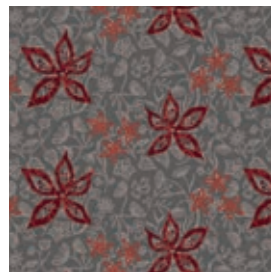




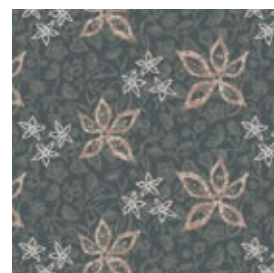
Q72-1



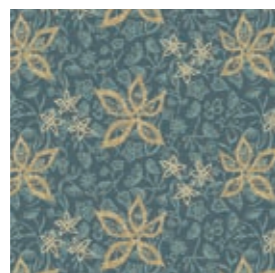
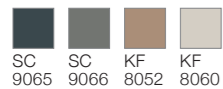
Repeat appr. 80 x 42,8 cm
Detail appr. 100 x 100 cm



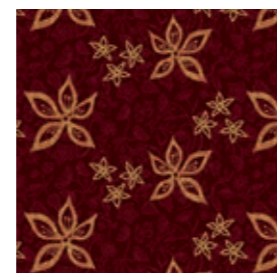
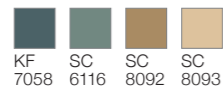
Q72-2



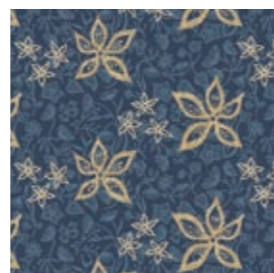
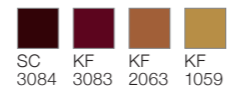
Q72-3



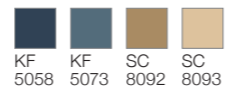
Q72-4



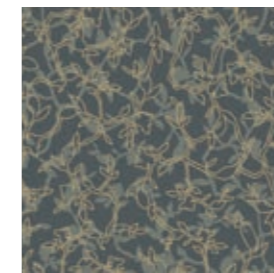
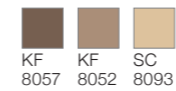
Q72-5



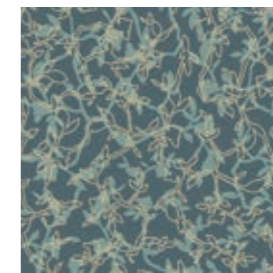
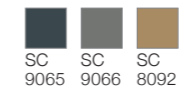
Q72-6



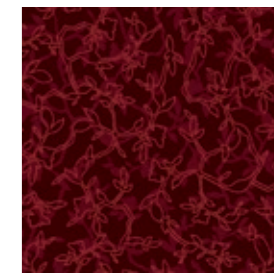
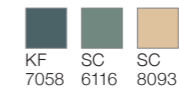
Q73-1



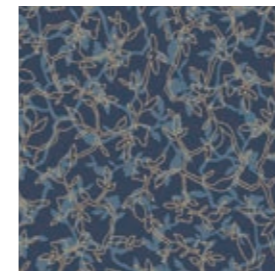
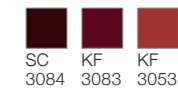
Q73-3



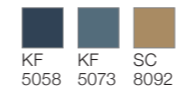
Q73-4



Q73-5



Q73-6

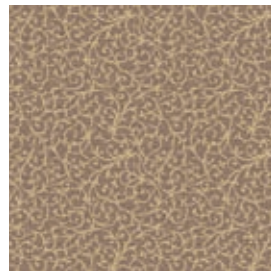


Q73-2

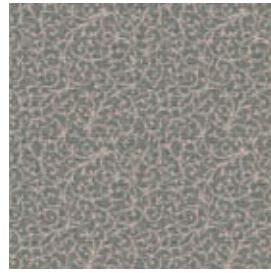
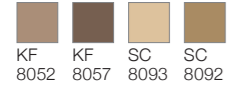


Repeat appr. 100 x 119 cm
Detail appr. 100 x 100 cm

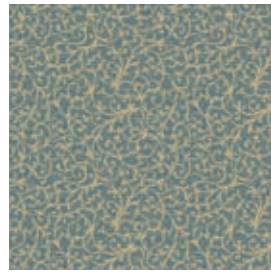




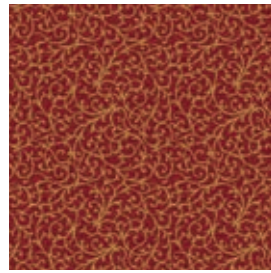
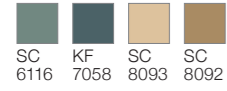
Q74-1



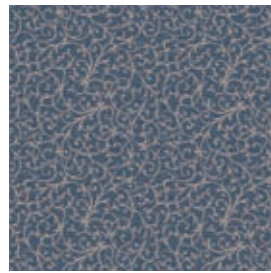
Q74-3



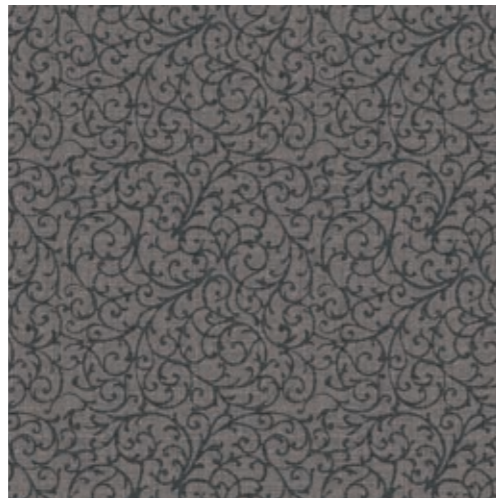
Q74-4



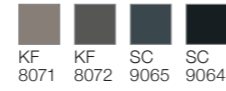
Q74-5



Q74-6



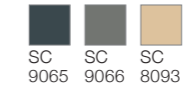
Q74-2



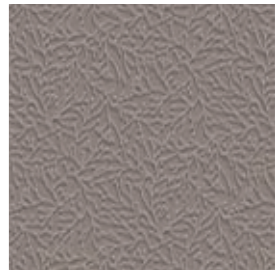
Repeat appr. 50 x 49,2 cm
Detail appr. 100 x 100 cm



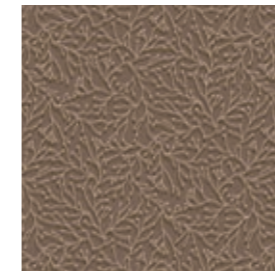
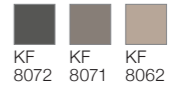
Q75-3



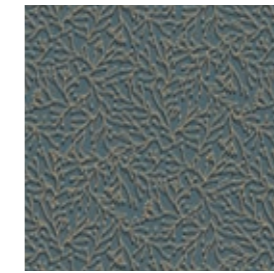
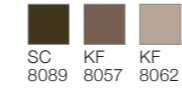
Repeat appr. 80 x 78,7 cm
Detail appr. 100 x 100 cm



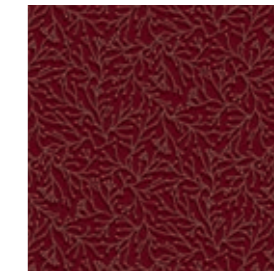
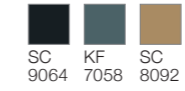
Q75-1



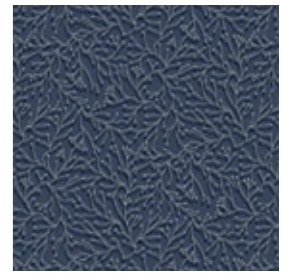
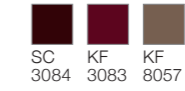
Q75-2



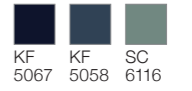
Q75-4

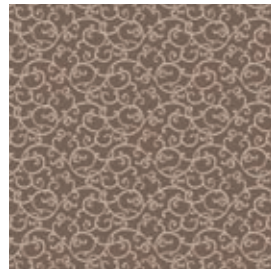


Q75-5

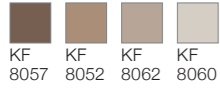


Q75-6

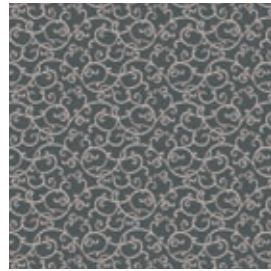
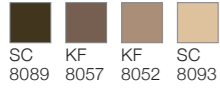




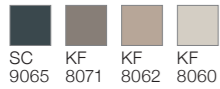
Q76-1



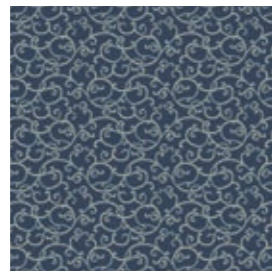
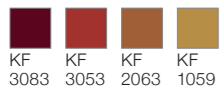
Q76-2



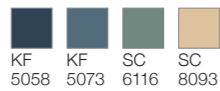
Q76-3



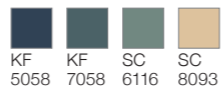
Q76-5



Q76-6



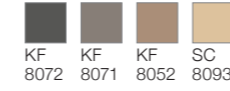
Q76-4



Repeat appr. 30,8 x 30 cm
Detail appr. 100 x 100 cm



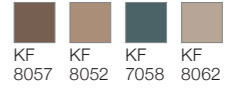
Q77-2



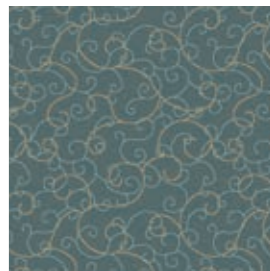
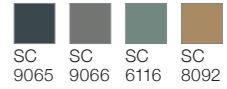
Repeat appr. 66,7 x 65,7 cm
Detail appr. 100 x 100 cm



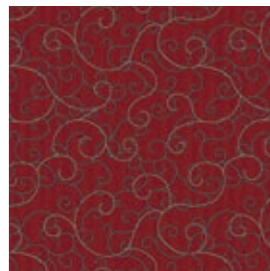
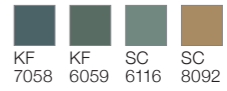
Q77-1



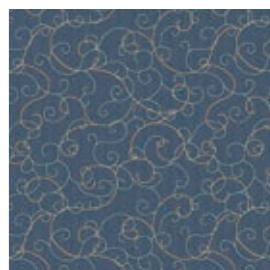
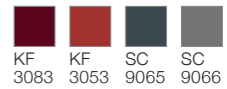
Q77-3



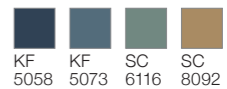
Q77-4

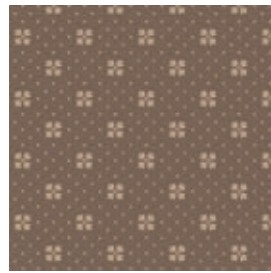


Q77-5

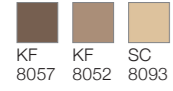


Q77-6

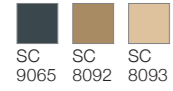




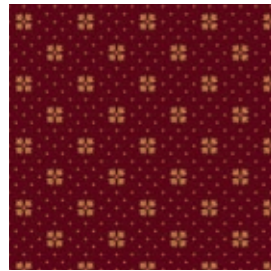
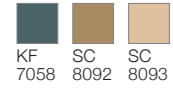
Q78-2



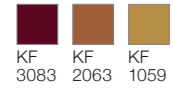
Q78-3



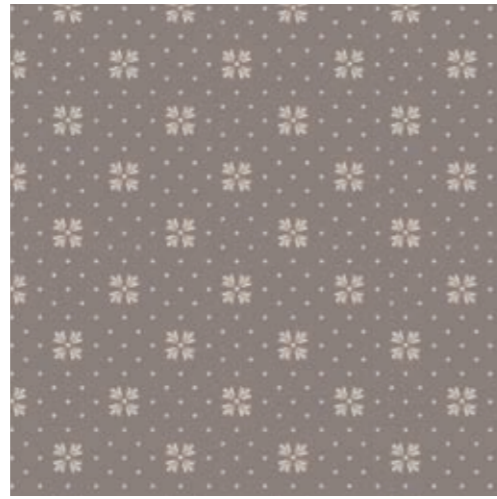
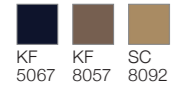
Q78-4



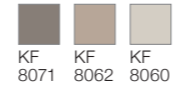
Q78-5



Q78-6



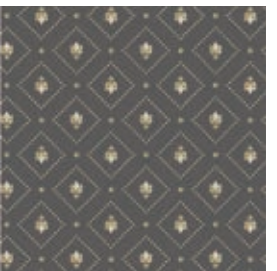
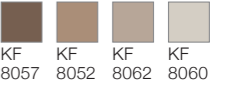
Q78-1



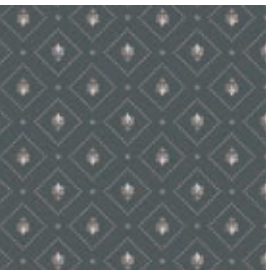
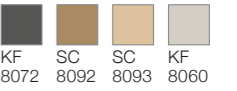
Repeat appr. 22,2 x 22 cm
Detail appr. 100 x 100 cm



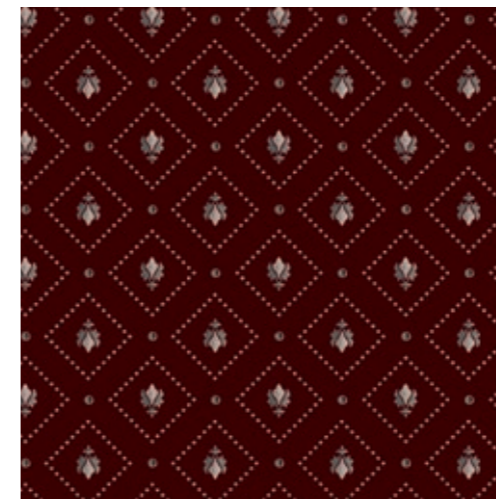
Q79-1



Q79-2



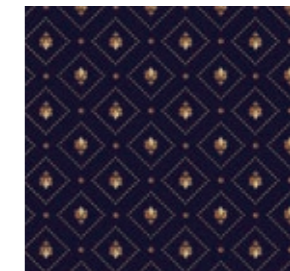
Q79-3



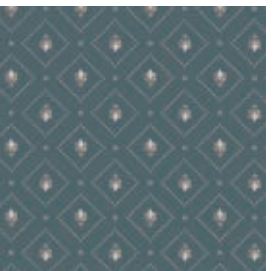
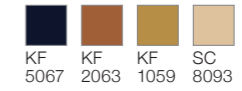
Q79-5



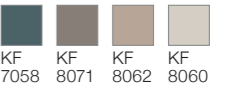
Repeat appr. 25 x 24,6 cm
Detail appr. 100 x 100 cm

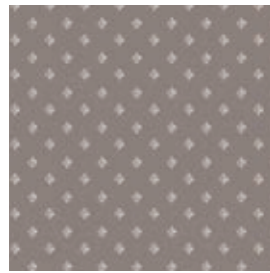


Q79-6

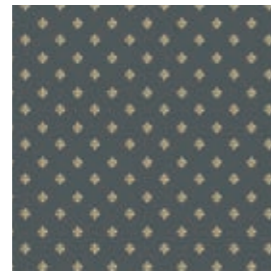


Q79-4

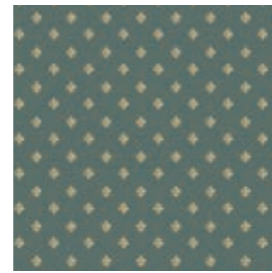
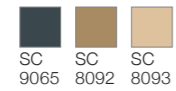




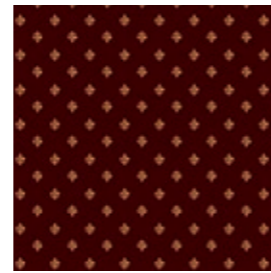
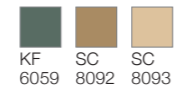
Q80-1



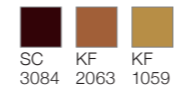
Q80-3



Q80-4



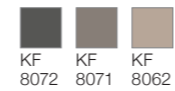
Q80-5



Q80-6



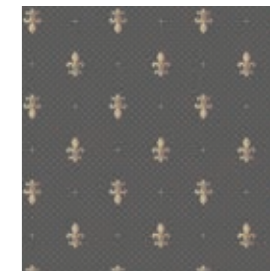
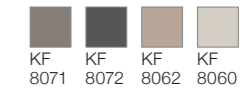
Q80-2



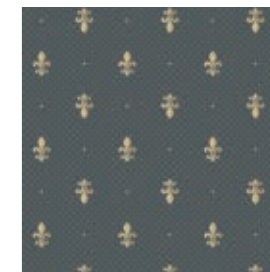
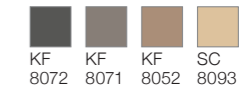
Repeat appr. 25 x 24,6 cm
Detail appr. 100 x 100 cm



Q81-1



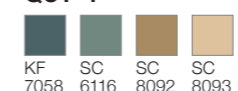
Q81-2



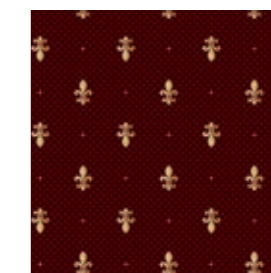
Q81-3



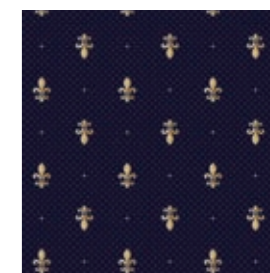
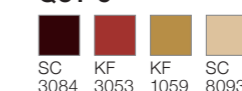
Q81-4



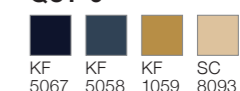
Repeat appr. 30,8 x 30,3 cm
Detail appr. 100 x 100 cm

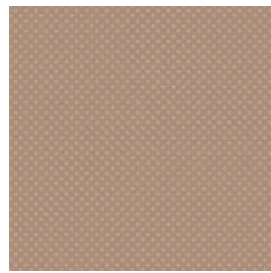


Q81-5

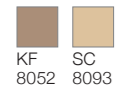


Q81-6

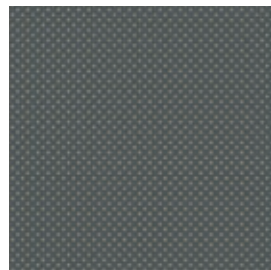
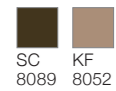




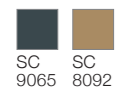
Q82-1



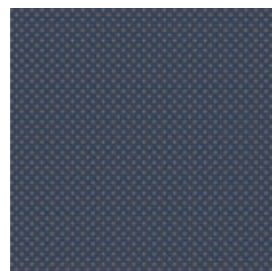
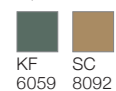
Q82-2



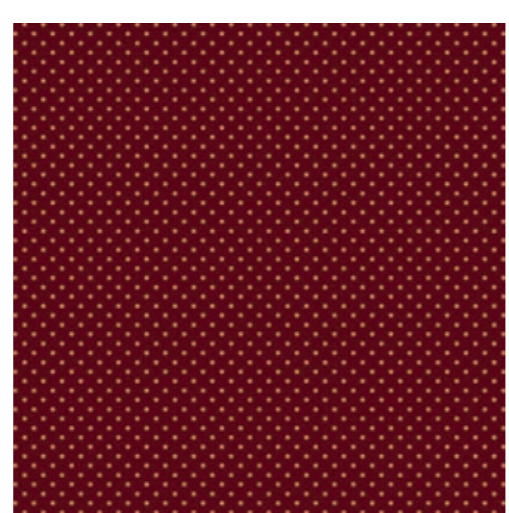
Q82-3



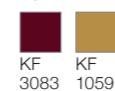
Q82-4



Q82-6



Q82-5



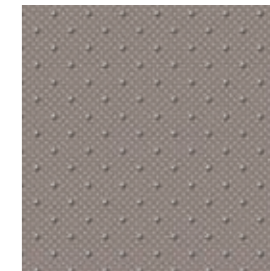
Repeat appr. 2,5 x 2,4 cm
Detail appr. 66,7 x 66,7 cm



Q83-3



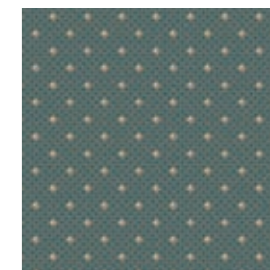
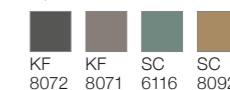
Repeat appr. 8,3 x 8,2 cm
Detail appr. 66,7 x 66,7 cm



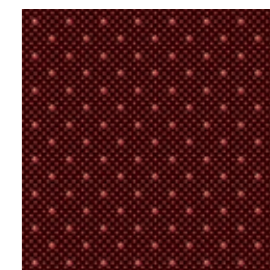
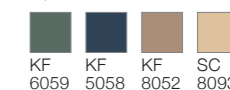
Q83-1



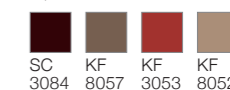
Q83-2



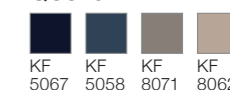
Q83-4



Q83-5

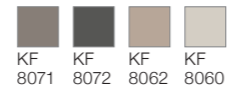


Q83-6





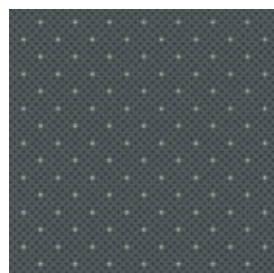
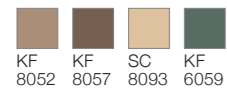
Q84-2



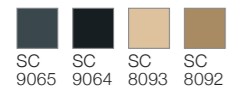
Repeat appr. 8,3 x 8,2 cm
Detail appr. 66,7 x 66,7 cm



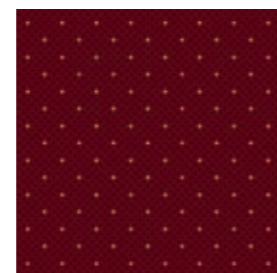
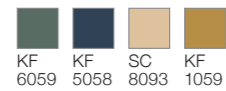
Q84-1



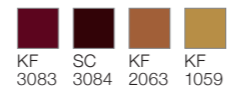
Q84-3



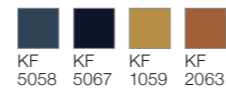
Q84-4



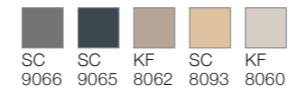
Q84-5



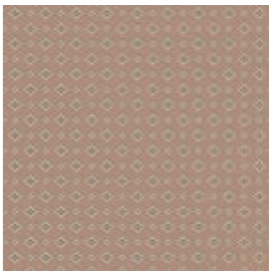
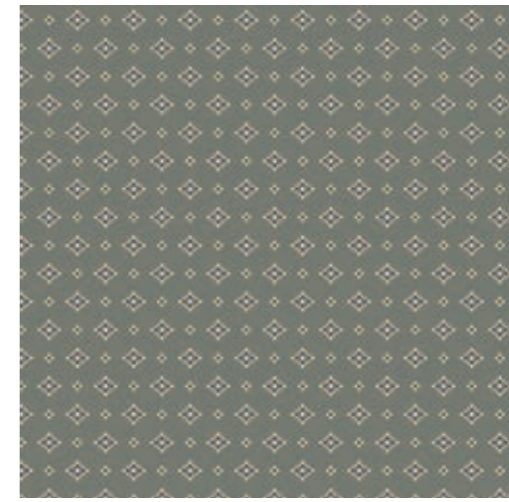
Q84-6



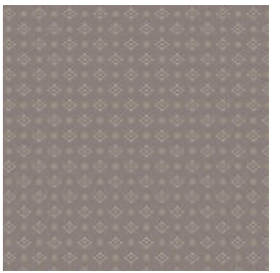
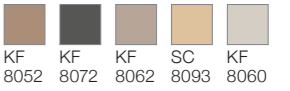
Q85-3



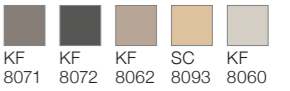
Repeat appr. 7,4 x 7,3 cm
Detail appr. 66,7 x 66,7 cm



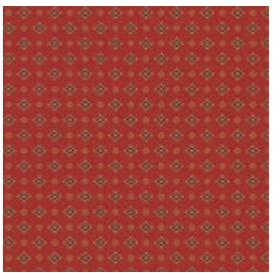
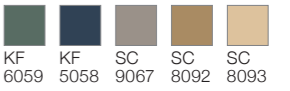
Q85-1



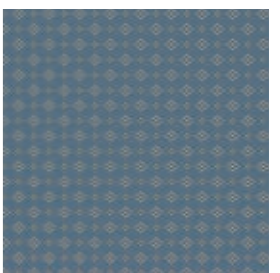
Q85-2



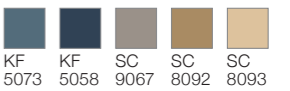
Q85-4

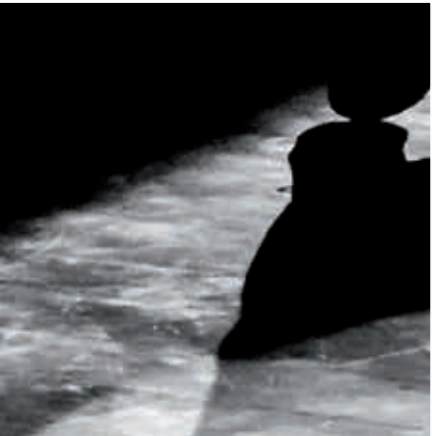


Q85-5



Q85-6





Farben | Colours | Couleurs



Bitte beachten Sie, dass die in dieser Kollektion dargestellten Farben nur annähernd den tatsächlichen Teppichbodenfarben entsprechen. Verwenden Sie bitte unsere original Farbmuster.

Please note that colours in this printed brochure are approximate. For correct colours please refer to our colour samples.

Veuillez noter que les couleurs représentées dans cette collection sont approximatives par rapport aux couleurs réelles. S'il vous plaît utiliser notre nuancier original.

DATENBLATT | SPECIFICATIONS | FICHE TECHNIQUE

AP 900

Warenkonstruktion Construction Structure		Tufting Velour Saxony 1/10" tufted cut pile Saxony 1/10" Tufting Velours Saxony 1/10"
Mustergestaltung Design Dessin		Chromojet Druck Chromojet printed Impression jet d'encre
Polmaterial nach TKG Pile layer Nature de la fibre selon la TKG		100% Polyamid 6 100% Polyamide 6 100% Polyamide 6
Tufting-Träger Primary backing Sous-couche tuftage		75% PES / 25% PA-Vlies 75% PES / 25% PA-non woven 75 % polyester / 25 % non-tissé PA
Rückenausrüstung Secondary backing Dossier d'envers		textiler Zweitrücken woven PP PP tissé
Lieferform Available size Format de livraison	Bahnenware rolls rouleaux	400 cm
Verwendungsbereich Wear rating Domaine d'application	EN 1307	gewerblich - stark (33) commercial - heavy (33) commercial - élevé (33)
Komfortwert Comfort rating Valeur de confort	EN 1307	LC 2
Flächengewicht Total weight Grammage total	ISO 8543	ca. 1930 g/m ² app. 1930 g/m ²
Gesamtdicke Total thickness Épaisseur totale	ISO 1765	ca. 7 mm app. 7 mm
Poleinsatzgewicht Pile total yarn weight Poids du velours		ca. 980 g/m ² app. 980 g/m ²
Polschichtdicke Pile height above primary backing Épaisseur du velours	ISO 1766	ca. 4,2 mm app. 4,2 mm
Pol-Rohdichte Pile density Densité brute du velours	ISO 8543	ca. 0,14 g/cm ³ app. 0,14 g/cm ³
Noppenzahl Number of tufts Nombre de tufts	ISO 1763	ca. 173800 /m ² app. 173800 /m ²
Elektostatisches Verhalten Vertical resistance Comportement électrostatique	ISO 6356	≤ 2 kV
Bewertete Trittschallminderung Impact sound reduction Indice de réduction des bruits d'impact	ISO 140-8	ca. 27 dB app. 27 dB
Schallabsorptionsgrad α_w Sound absorption rate Coéfficient d'absorption acoustique	ISO 354	ca. 0,2 app. 0,2
Wärmedurchlaßwiderstand Thermal resistance Résistivité thermique	ISO 8302	ca. 0,13 m ² K/W app. 0,13 m ² K/W
Prodis-Lizenz-Nummer Prodis-licence-number N° de licence Prodis		FDBD24FD
Umwelt-Produktdeklaration Environmental Product Declaration Déclaration Environnementale Produit	ISO 14025	EPD-GUT-20170017-CCA1-DE-D
Allgemeine bauaufsichtliche Zulassung (abZ) abZ-number Agrément technique général		Z-156.601-617
Brandverhalten Reaction to fire Comportement au feu	EN 13501	Cfl-s1
CE-Nummer CE-number numero CE		1658-CPR-3139
DoP-Nummer DoP-number numero DoP		0001
Lichtechtheit Colour fastness to light Stabilité à la lumière	DIN EN ISO 105 B02	≥ 5
Wasserechtheit Colour fastness to water Résistance à l'eau	DIN EN ISO 105 E01	≥ 4
Reibechtheit Colour fastness to rubbing Résistance à l'usure par friction	DIN EN ISO 105 X12	≥ 3-4



Stand September 2017. Kontaktieren Sie Ihren Ansprechpartner für das aktuelle Datenblatt.
Status September 2017. Please contact your representative for the current technical specifications.
État Septembre 2017. Contactez votre responsable pour la courante fiche technique.

CARPET PRODUCT GUIDE



Halbmond Teppichwerke GmbH
Carl-Wilhelm-Koch Straße 6
D-08606 Oelsnitz, Germany
Tel.: +49 37421-42-0
Fax: +49 37421-42-571
info@halbmond.de
www.halbmond.de