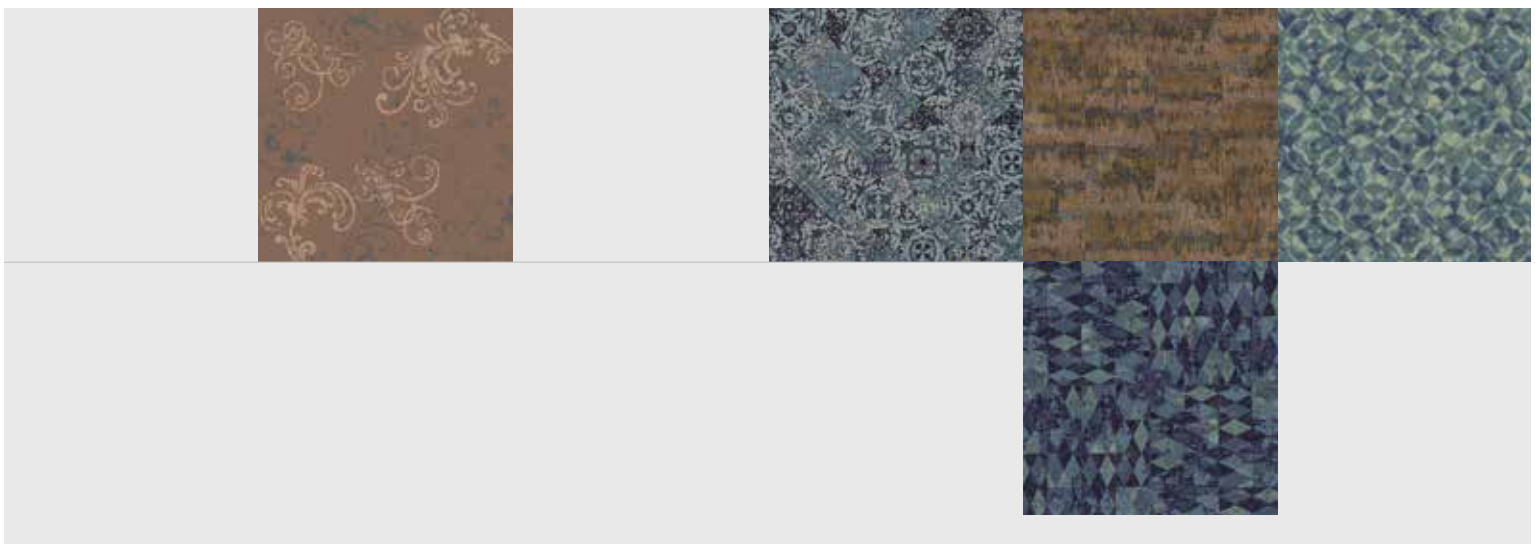




Q step TILES



Q step TILES

de Q Step Tiles bietet 36 zeitlose Designs in je 6 ruhigen Farbvarianten für das Hotel. Erhältlich in den Größen 60 × 60 cm, 120 × 120 cm und 180 × 180 cm.

en Q Step Tiles offers 36 timeless designs in 6 subtle shades for the hotel. Available in sizes 60 × 60 cm, 120 × 120 cm and 180 × 180 cm.

fr Q Step Tiles propose 36 modèles intemporels dans 6 coloris doux pour l'hôtel. Disponible dans les tailles 60 × 60 cm, 120 × 120 cm et 180 × 180 cm.



- 1100 g/m² Markenpolyamid für höchsten Anspruch
- Produziert mit modernster Chromojet-Technologie
- 36 Designs aller Art
- 6 Farboptionen pro Design
- Unkomplizierte Auswahl
- Einfach zu bestellen
- Schneller Musterservice
- Kurze Lieferzeiten
- Wettbewerbsfähige Preise

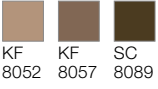
- 1100 g/m² branded polyamide for the highest demands
- Manufactured by the latest Chromojet technology
- 36 designs of any kind
- 6 colour combinations per design
- Straightforward choice
- Easy to order
- Fast sample service
- Quick delivery times
- Competitive prices

- 1100 g/m² en polyamide de marque pour répondre aux exigences les plus élevées
- Fabriqué grâce à la technologie de pointe Chromojet
- 36 modèles dans tous les genres
- 6 couleurs au choix par modèle
- Sélection aisée
- Facile à commander
- Service d'échantillons rapide
- Courts délais de livraison
- Prix compétitifs

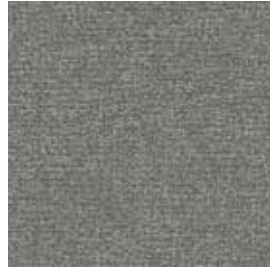
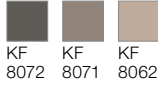




F01-01A



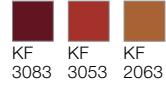
F01-02A



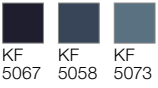
F01-03A



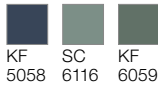
F01-05A



F01-06A



F01-04A

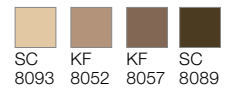


60er Fliesen, rapportgenau
60 x 60 tiles, critical cut
Dalles 60 x 60 cm, avec raccord

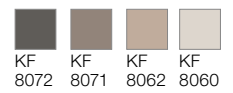




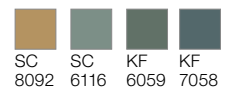
F02-01A



F02-02A



F02-04A



F02-03A



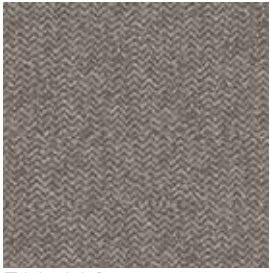
F02-06A



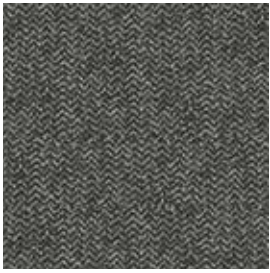
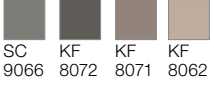
F02-05A



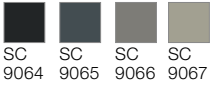
60er Fliesen, rapportgenau
 60 x 60 tiles, critical cut
 Dalles 60 x 60 cm, avec raccord



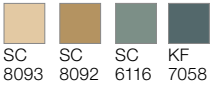
F03-02A



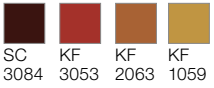
F03-03A



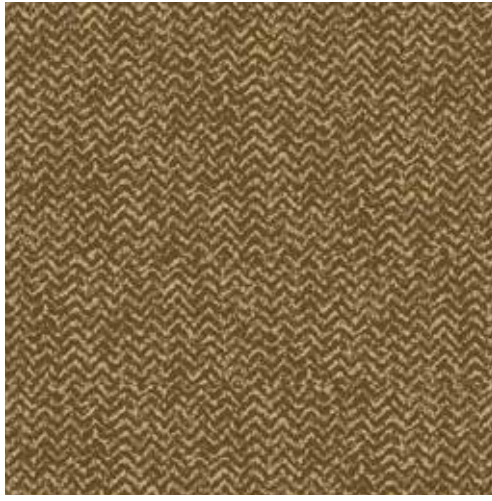
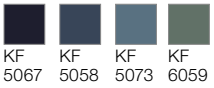
F03-04A



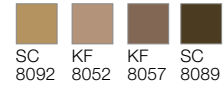
F03-05A



F03-06A



F03-01A

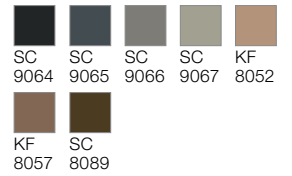


60er Fliesen, rapportgenau
60 x 60 tiles, critical cut
Dalles 60 x 60 cm, avec raccord

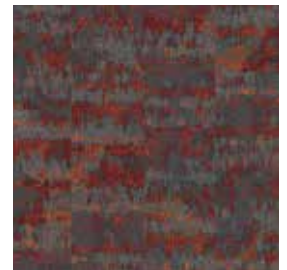
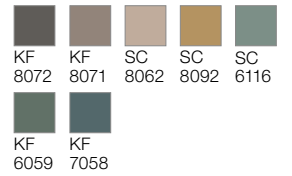




F04-01A



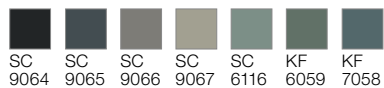
F04-02A



F04-03A



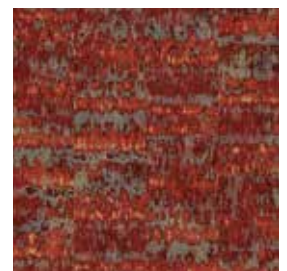
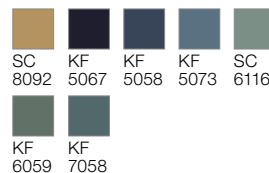
F04-04A



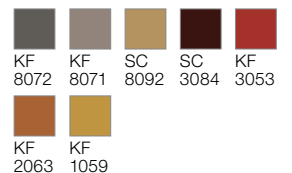
60er Fliesen, rapportgenau
60 x 60 tiles, critical cut
Dalles 60 x 60 cm, avec raccord

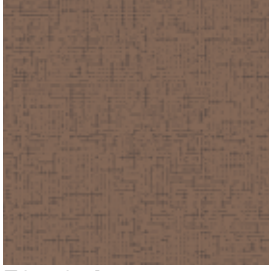


F04-06A



F04-05A





F05-01A



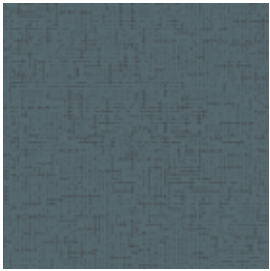
SC KF
9064 8057



F05-03A



SC SC
9064 9065



F05-04A



SC KF
9064 7058



F05-05A



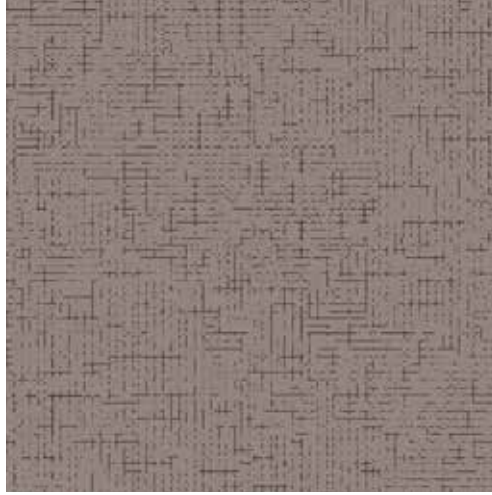
SC KF
3084 3053



F05-06A



KF KF
5067 5058



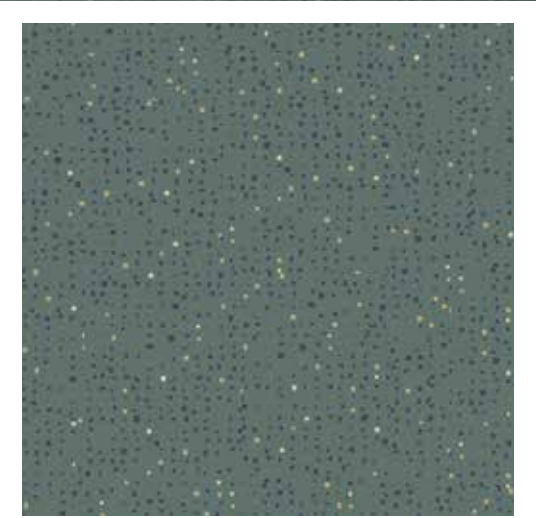
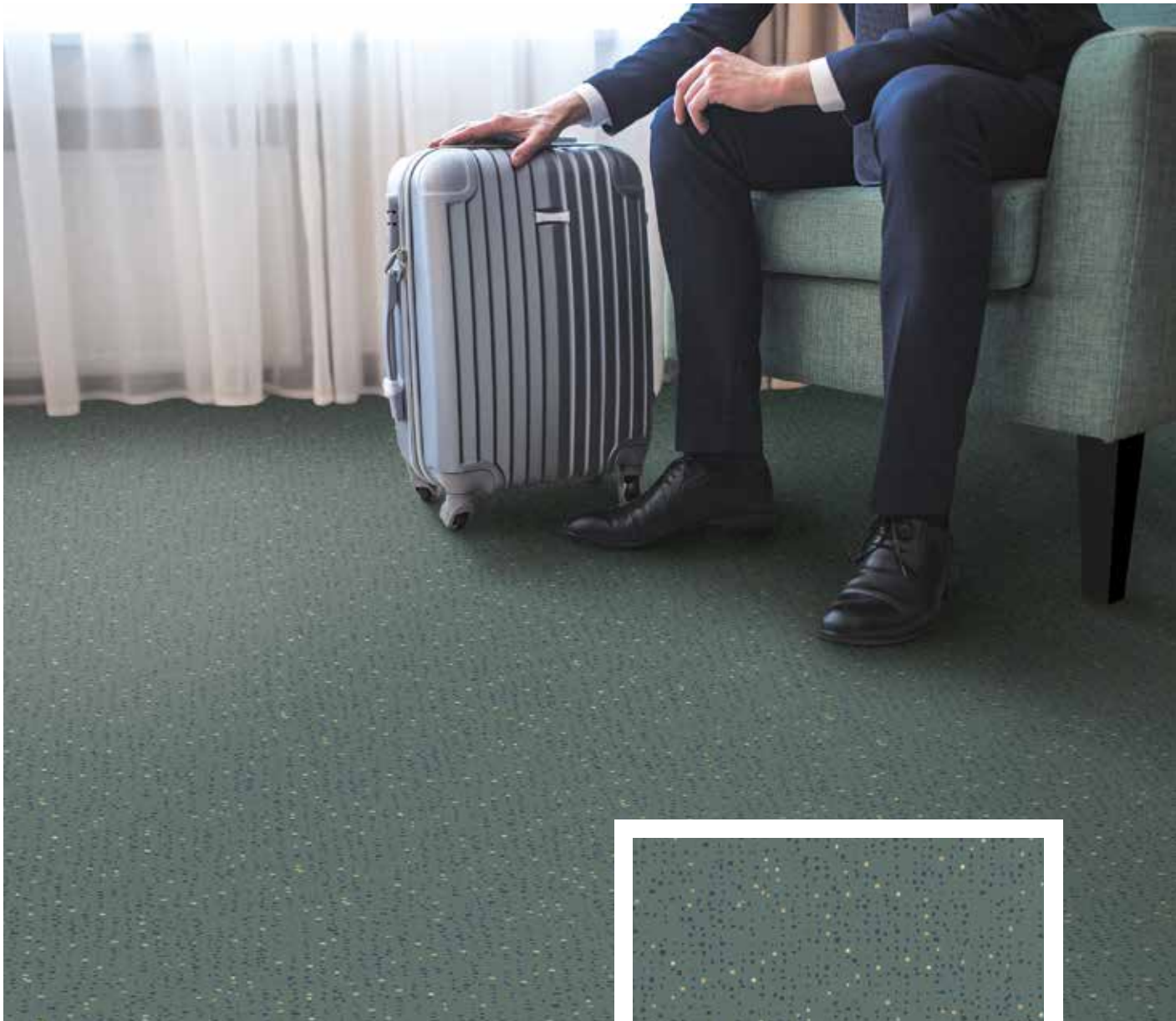
F05-02A



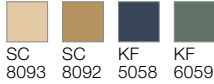
SC KF
9064 8071

60er Fliesen, rapportgenau
60 x 60 tiles, critical cut
Dalles 60 x 60 cm, avec raccord





F06-04A

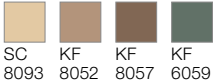


SC SC KF KF
8093 8092 5058 6059

60er Fliesen, rapportgenau
60 x 60 tiles, critical cut
Dalles 60 x 60 cm, avec raccord



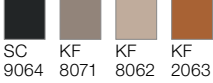
F06-01A



SC KF KF KF
8093 8052 8057 6059



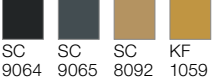
F06-02A



SC KF KF KF
9064 8071 8062 2063



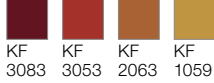
F06-03A



SC SC SC KF
9064 9065 8092 1059



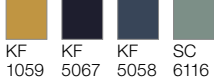
F06-05A



KF KF KF KF
3083 3053 2063 1059



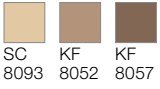
F06-06A



KF KF KF SC
1059 5067 5058 6116



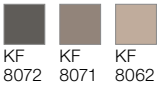
F07-01A



SC 8093 KF 8052 KF 8057



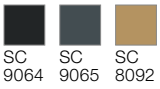
F07-02A



KF 8072 KF 8071 KF 8062



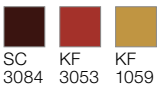
F07-03A



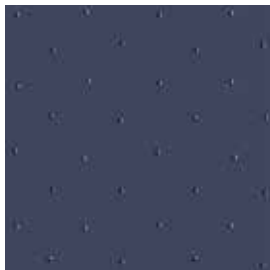
SC 9064 SC 9065 SC 8092



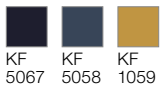
F07-05A



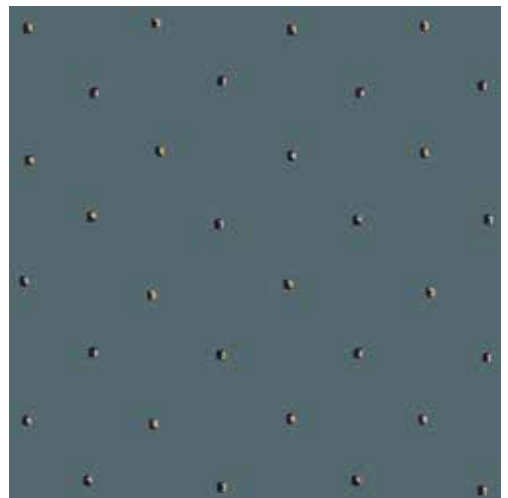
SC 3084 KF 3053 KF 1059



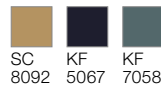
F07-06A



KF 5067 KF 5058 KF 1059



F07-04A

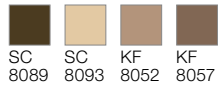


SC 8092 KF 5067 KF 7058

60er Fliesen, rapportgenau
60 x 60 tiles, critical cut
Dalles 60 x 60 cm, avec raccord



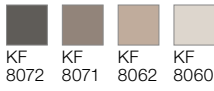
F08-01A



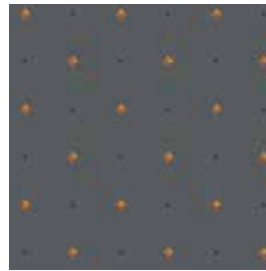
SC 8089 SC 8093 KF 8052 KF 8057



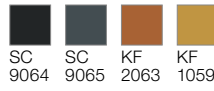
F08-02A



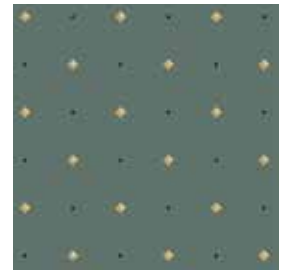
KF 8072 KF 8071 KF 8062 KF 8060



F08-03A



SC 9064 SC 9065 KF 2063 KF 1059



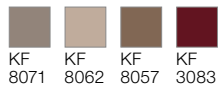
F08-04A



SC 8093 SC 8092 KF 5067 KF 6059

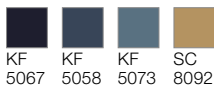


F08-05A



KF 8071 KF 8062 KF 8057 KF 3083

F08-06A



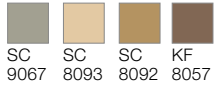
KF 5067 KF 5058 KF 5073 SC 8092

60er Fliesen, rapportgenau
60 x 60 tiles, critical cut
Dalles 60 x 60 cm, avec raccord

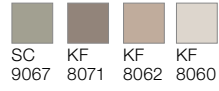




F09-01A



F09-02A



F09-03A



F09-04A



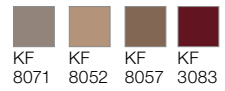
F09-06A



60er Fliesen, rapportgenau
60 x 60 tiles, critical cut
Dalles 60 x 60 cm, avec raccord

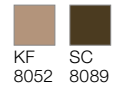


F09-05A

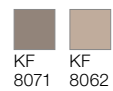




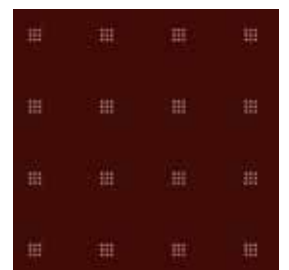
F10-01A



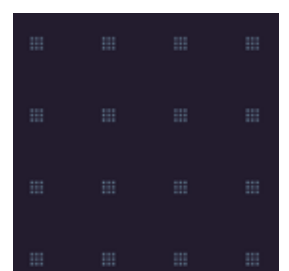
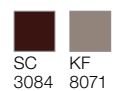
F10-02A



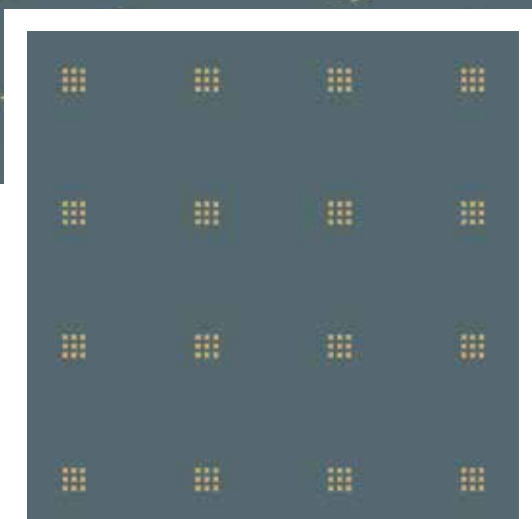
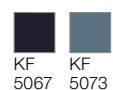
F10-03A



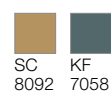
F10-05A



F10-06A



F10-04A



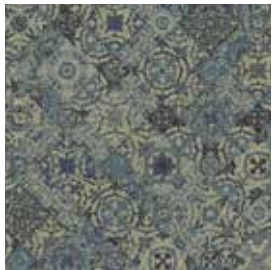
60er Fliesen, rapportgenau
60 x 60 tiles, critical cut
Dalles 60 x 60 cm, avec raccord



F11-01A



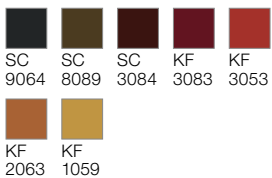
F11-03A



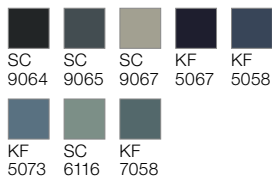
F11-04A



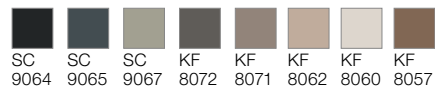
F11-05A



F11-06A



F11-02A



60er Fliesen, rapportgenau
 60 x 60 tiles, critical cut
 Dalles 60 x 60 cm, avec raccord

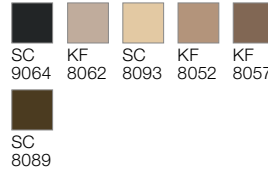
F12-06A



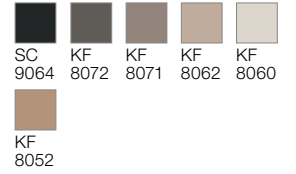
60er Fliesen, rapportgenau
 60 x 60 tiles, critical cut
 Dalles 60 x 60 cm, avec raccord



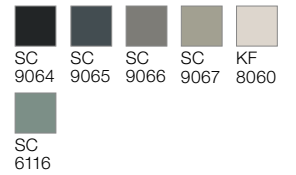
F12-01A



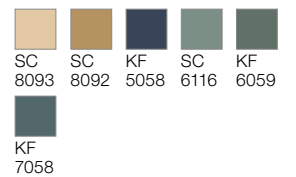
F12-02A



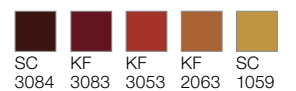
F12-03A

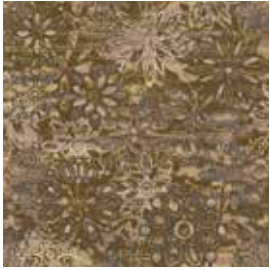


F12-04A

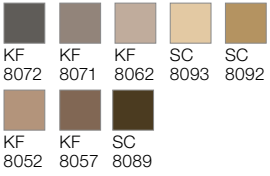


F12-05A

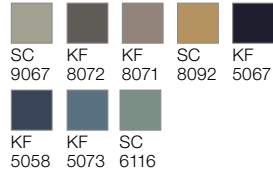




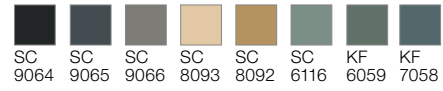
F13-01A



F13-06A



F13-04A



60er Fliesen, rapportgenau
 60 x 60 tiles, critical cut
 Dalles 60 x 60 cm, avec raccord



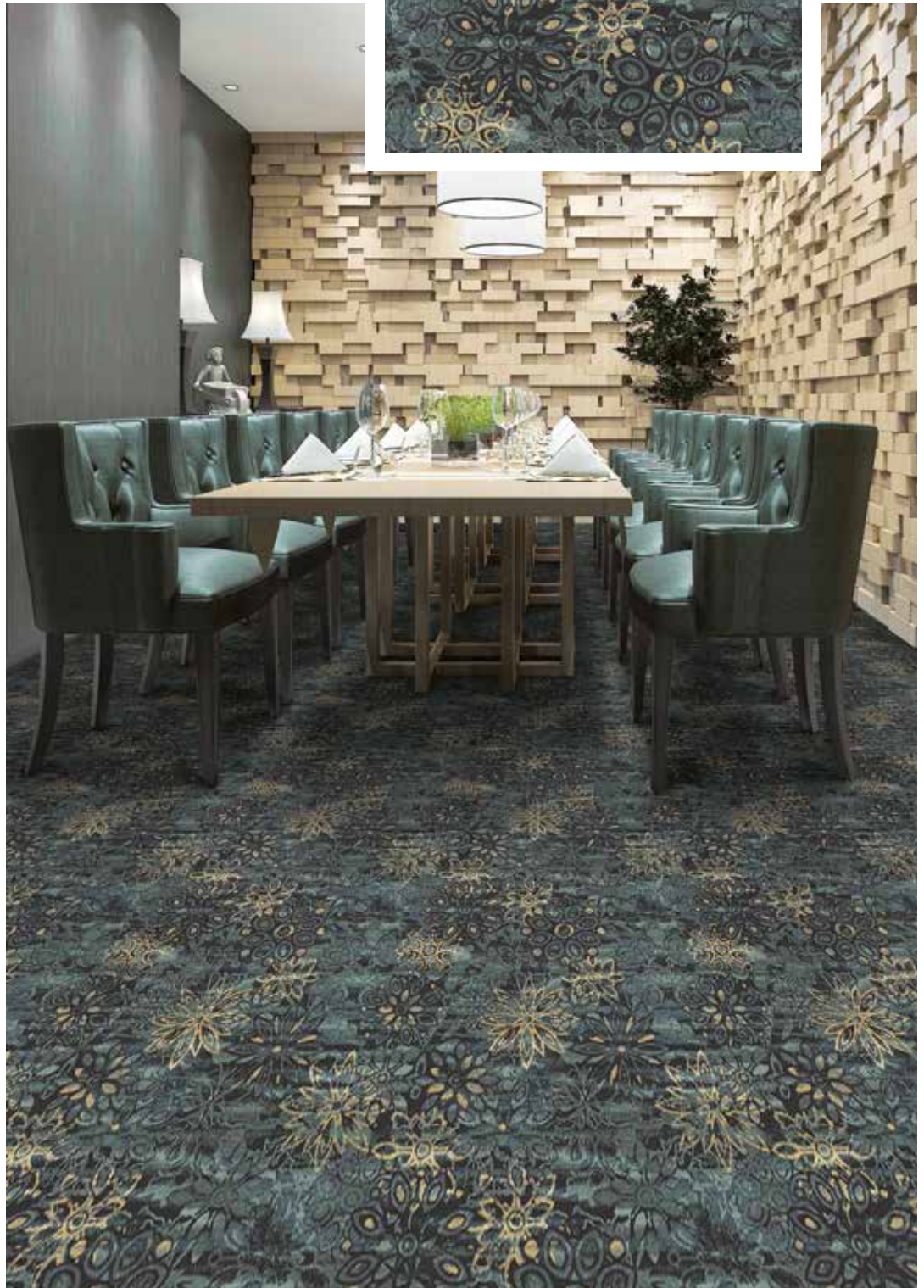
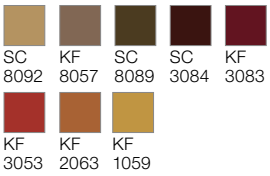
F13-02A



F13-03A



F13-05A

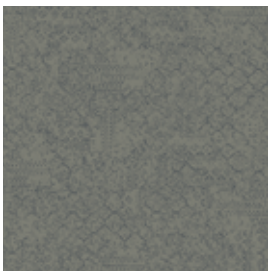




F14-01A



KF SC
8057 8089



F14-03A



SC SC
9065 9066



F14-04A



SC KF
9065 6059

F14-02A



KF KF
8072 8071

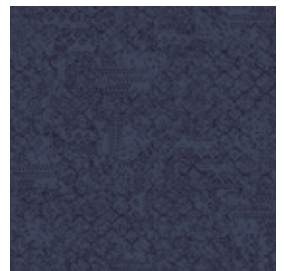
60er Fliesen, rapportgenau
60 x 60 tiles, critical cut
Dalles 60 x 60 cm, avec raccord



F14-05A



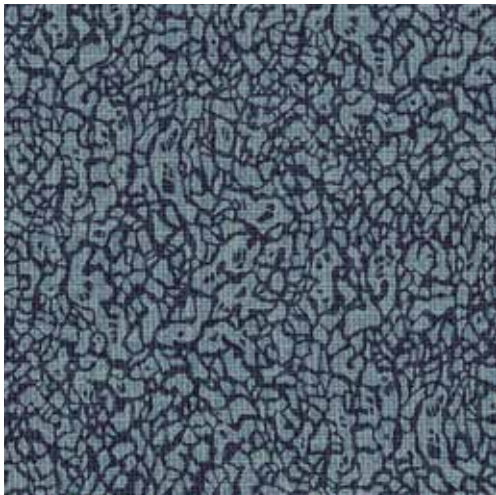
SC KF
3084 3053



F14-06A



KF KF
5067 5058



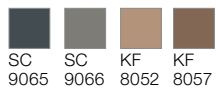
F15-06A



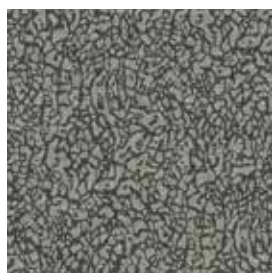
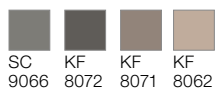
60er Fliesen, rapportgenau
 60 x 60 tiles, critical cut
 Dalles 60 x 60 cm, avec raccord



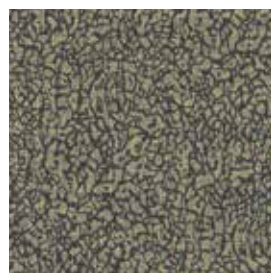
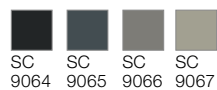
F15-01A



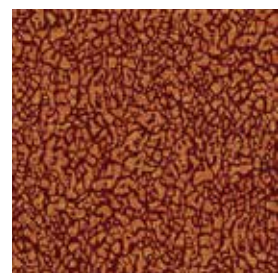
F15-02A



F15-03A



F15-04A

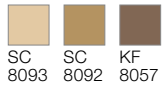


F15-05A

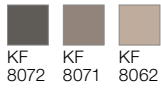




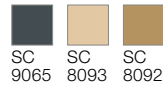
F16-01A



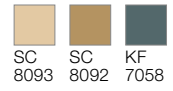
F16-02A



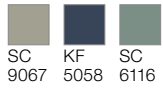
F16-03A



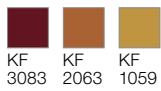
F16-04A



F16-06A



F16-05A

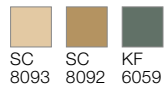


60er Fliesen, rapportgenau
60 x 60 tiles, critical cut
Dalles 60 x 60 cm, avec raccord





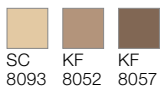
F17-04A



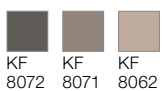
60er Fliesen, rapportgenau
60 x 60 tiles, critical cut
Dalles 60 x 60 cm, avec raccord



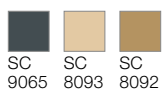
F17-01A



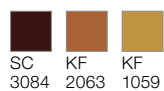
F17-02A



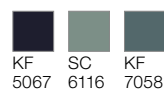
F17-03A



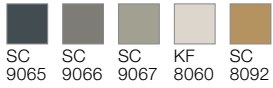
F17-05A



F17-06A



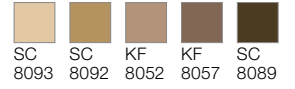
F18-03A



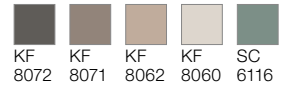
60er Fliesen, rapportgenau
60 x 60 tiles, critical cut
Dalles 60 x 60 cm, avec raccord



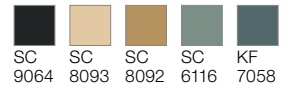
F18-01A



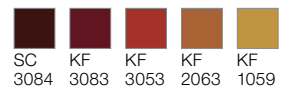
F18-02A



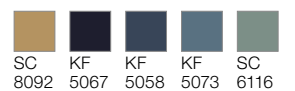
F18-04A



F18-05A

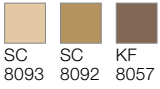


F18-06A





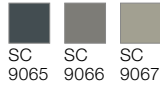
F19-01A



SC 8093 SC 8092 KF 8057



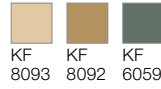
F19-03A



SC 9065 SC 9066 SC 9067



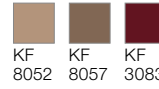
F19-04A



KF 8093 KF 8092 KF 6059



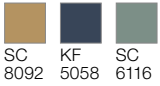
F19-05A



KF 8052 KF 8057 KF 3083

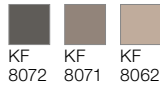


F19-06A



SC 8092 KF 5058 SC 6116

F19-02A



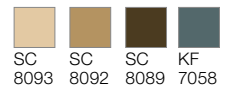
KF 8072 KF 8071 KF 8062

60er Fliesen, rapportgenau
60 x 60 tiles, critical cut
Dalles 60 x 60 cm, avec raccord

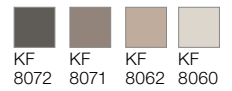




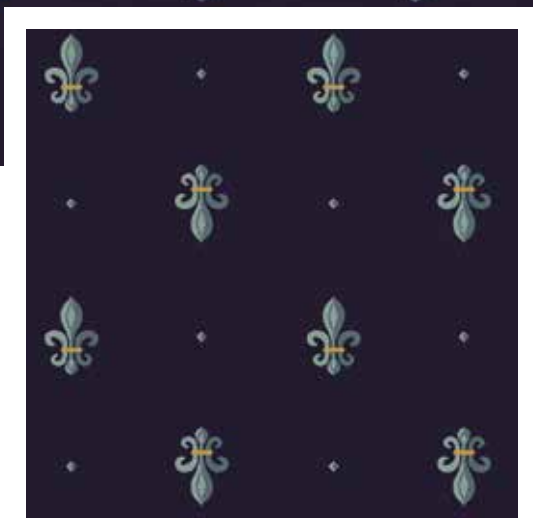
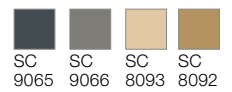
F20-01A



F20-02A



F20-03A



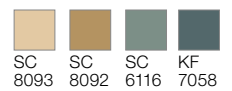
F20-06A



F20-05A



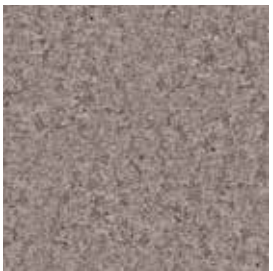
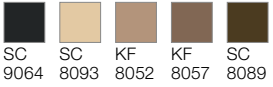
F20-04A



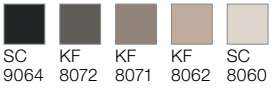
60er Fliesen, rapportgenau
 60 x 60 tiles, critical cut
 Dalles 60 x 60 cm, avec raccord



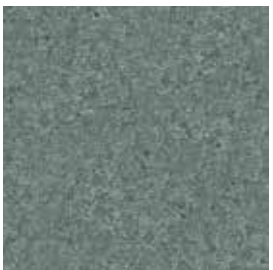
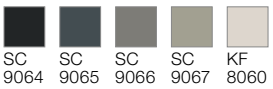
F21-01A



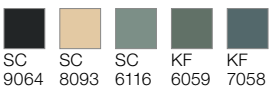
F21-02A



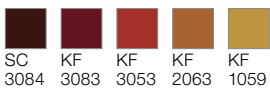
F21-03A



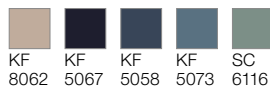
F21-04A



F21-05A

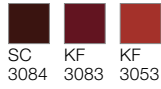


F21-06A



60er Fliesen, rapportgenau
 60 x 60 tiles, critical cut
 Dalles 60 x 60 cm, avec raccord

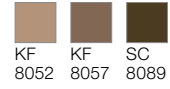
F22-05A



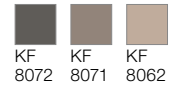
60er Fliesen, rapportgenau
60 x 60 tiles, critical cut
Dalles 60 x 60 cm, avec raccord



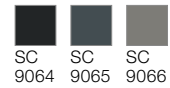
F22-01A



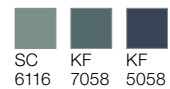
F22-02A



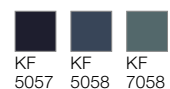
F22-03A



F22-04A

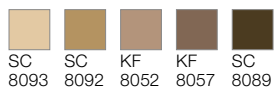


F22-06A

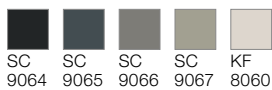




F23-01A



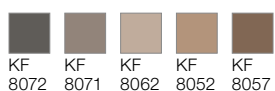
F23-03A



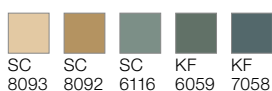
60er Fliesen, rapportgenau
60 x 60 tiles, critical cut
Dalles 60 x 60 cm, avec raccord



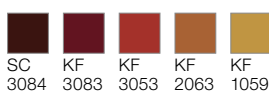
F23-02A



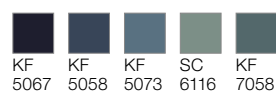
F23-04A



F23-05A

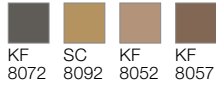


F23-06A

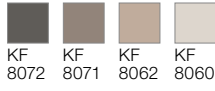




F24-01A



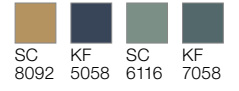
F24-02A



F24-03A



F24-04A



F24-06A



F24-05A

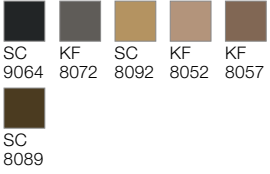


60er Fliesen, rapportgenau
60 x 60 tiles, critical cut
Dalles 60 x 60 cm, avec raccord

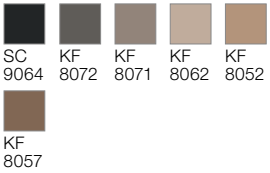




F25-01A



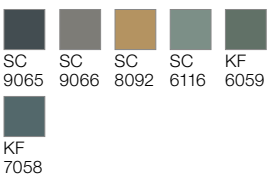
F25-02A



F25-03A



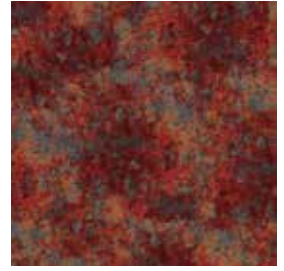
F25-04A



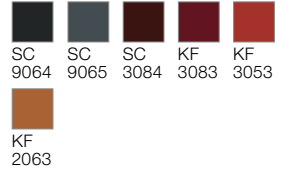
F25-06A

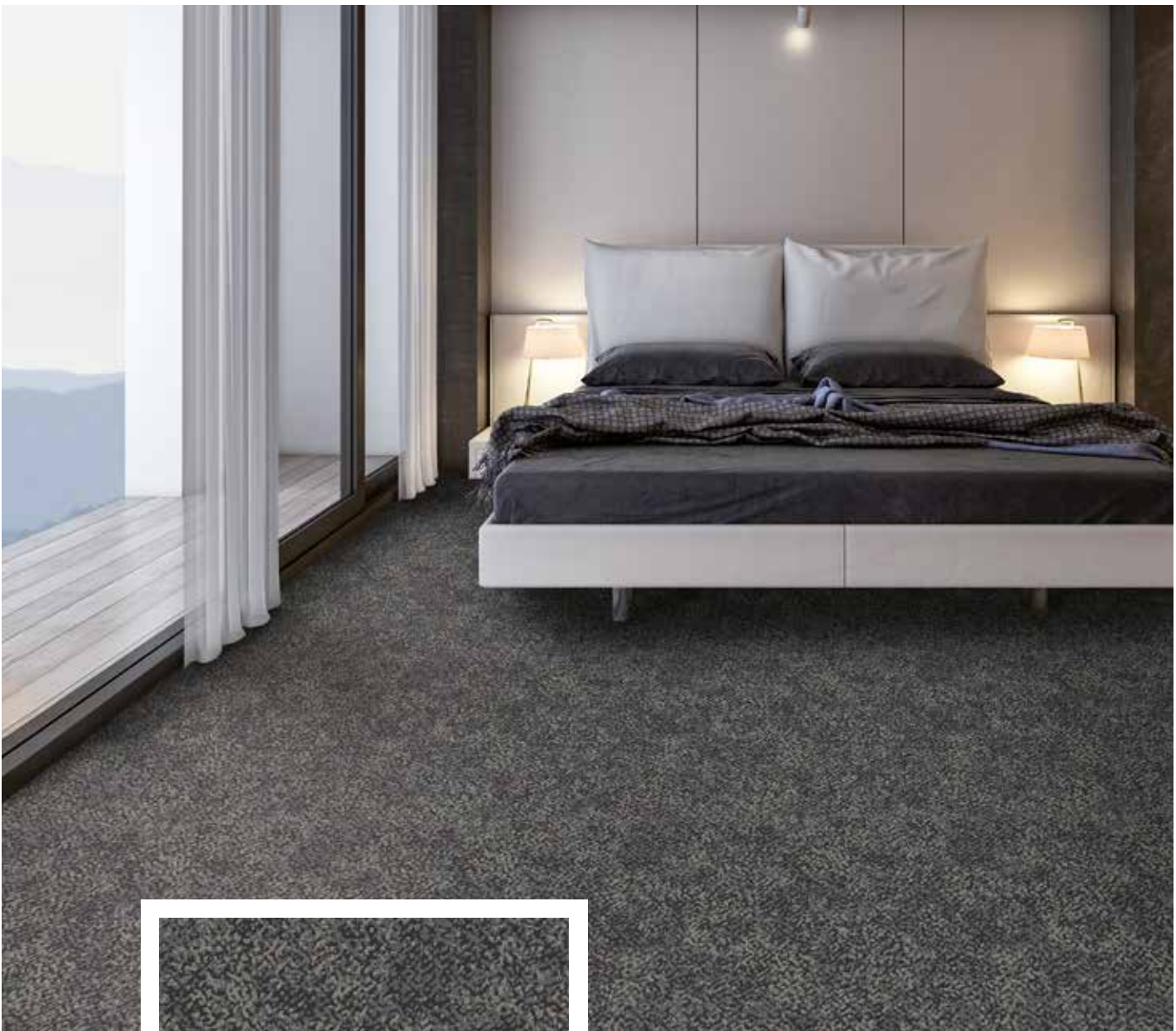


60er Fliesen, rapportgenau
60 x 60 tiles, critical cut
Dalles 60 x 60 cm, avec raccord

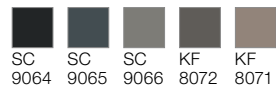


F25-05A





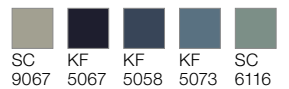
F26-03A



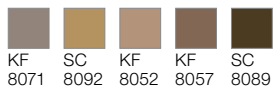
60er Fliesen, rapportgenau
60 x 60 tiles, critical cut
Dalles 60 x 60 cm, avec raccord



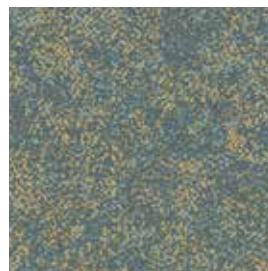
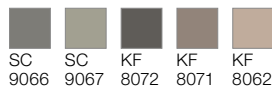
F26-06A



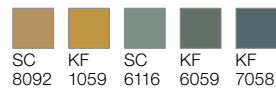
F26-01A



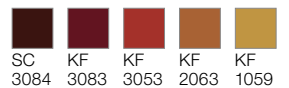
F26-02A



F26-04A

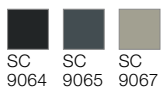


F26-05A





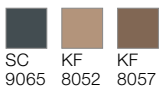
F27-03A



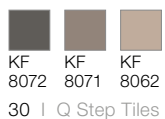
60er Fliesen, rapportgenau
60 x 60 tiles, critical cut
Dalles 60 x 60 cm, avec raccord



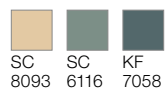
F27-01A



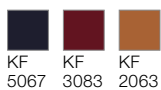
F27-02A



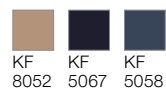
F27-04A



F27-05A

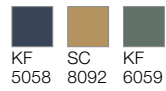


F27-06A





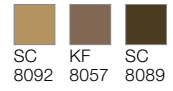
F28-04A



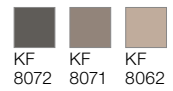
60er Fliesen, rapportgenau
60 x 60 tiles, critical cut
Dalles 60 x 60 cm, avec raccord



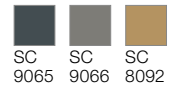
F28-01A



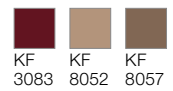
F28-02A



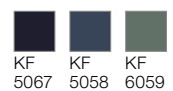
F28-03A



F28-05A

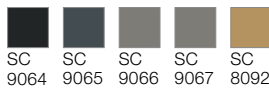


F28-06A





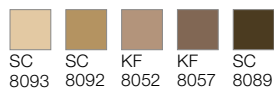
F29-03A



60er Fliesen, rapportgenau
60 x 60 tiles, critical cut
Dalles 60 x 60 cm, avec raccord



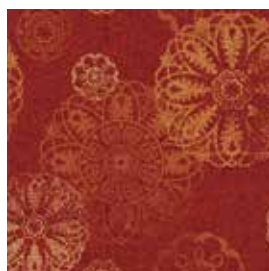
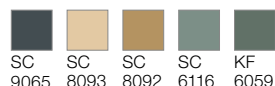
F29-01A



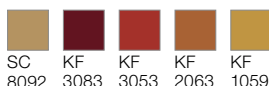
F29-02A



F29-04A



F29-05A

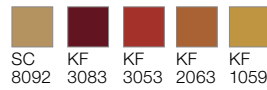


F29-06A

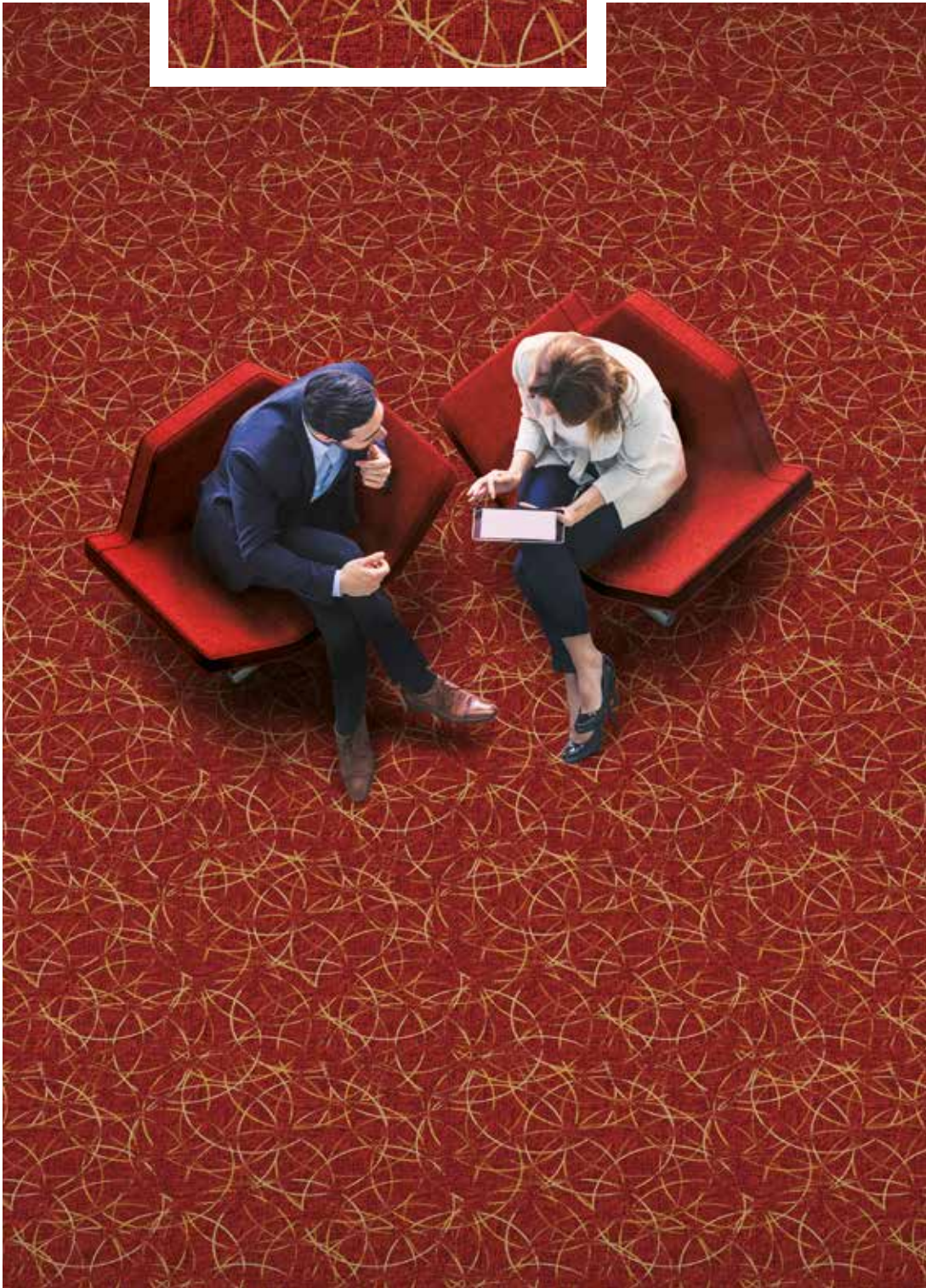




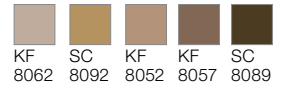
F30-05A



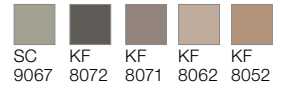
60er Fliesen, rapportgenau
 60 x 60 tiles, critical cut
 Dalles 60 x 60 cm, avec raccord



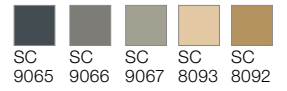
F30-01A



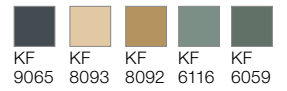
F30-02A



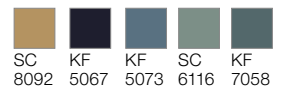
F30-03A



F30-04A

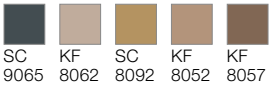


F30-06A

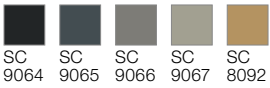




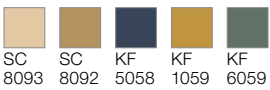
F31-01A



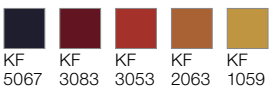
F31-03A



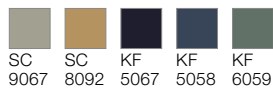
F31-04A



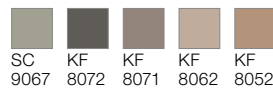
F31-05A



F31-06A

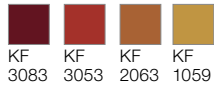


F31-02A

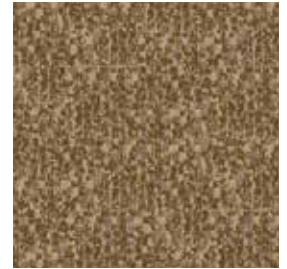
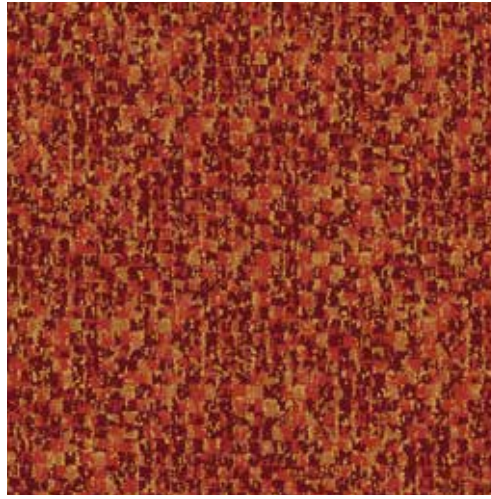


60er Fliesen, rapportgenau
 60 x 60 tiles, critical cut
 Dalles 60 x 60 cm, avec raccord

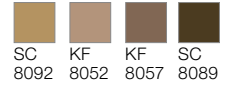
F32-05A



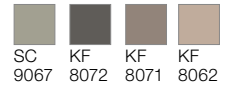
60er Fliesen, rapportgenau
60 x 60 tiles, critical cut
Dalles 60 x 60 cm, avec raccord



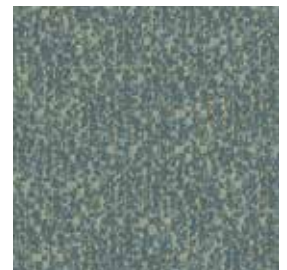
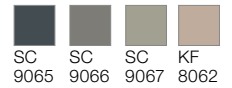
F32-01A



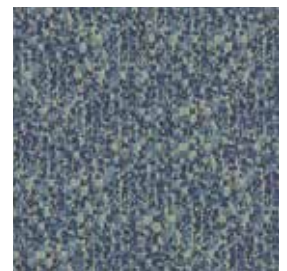
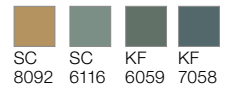
F32-02A



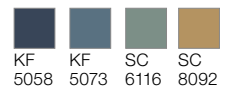
F32-03A

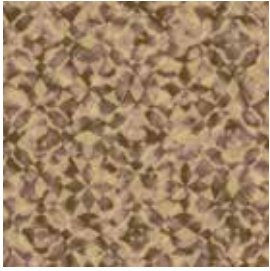


F32-04A

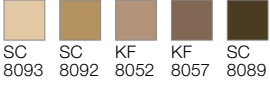


F32-06A

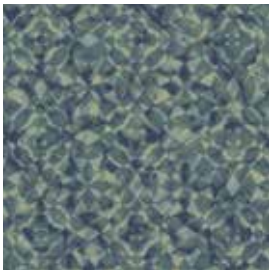
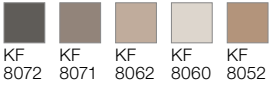




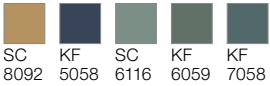
F33-01A



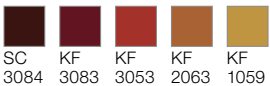
F33-02A



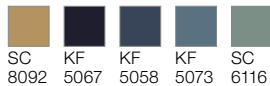
F33-04A



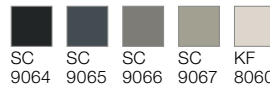
F33-05A



F33-06A

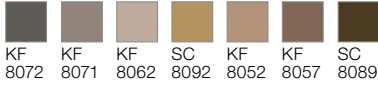


F33-03A



60er Fliesen, rapportgenau
 60 x 60 tiles, critical cut
 Dalles 60 x 60 cm, avec raccord

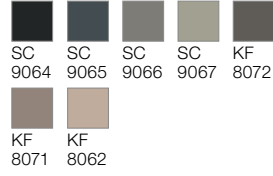
F34-01A



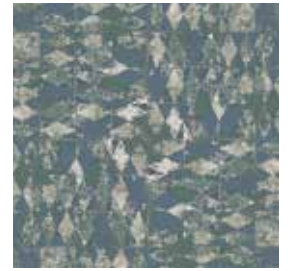
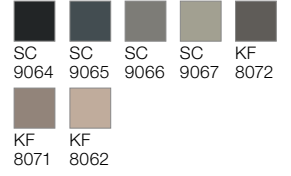
60er Fliesen, rapportgenau
60 x 60 tiles, critical cut
Dalles 60 x 60 cm, avec raccord



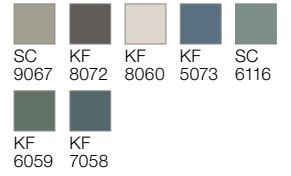
F34-02A



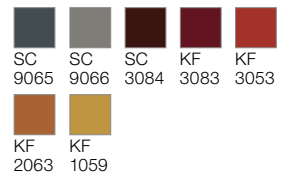
F34-03A



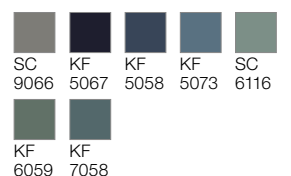
F34-04A

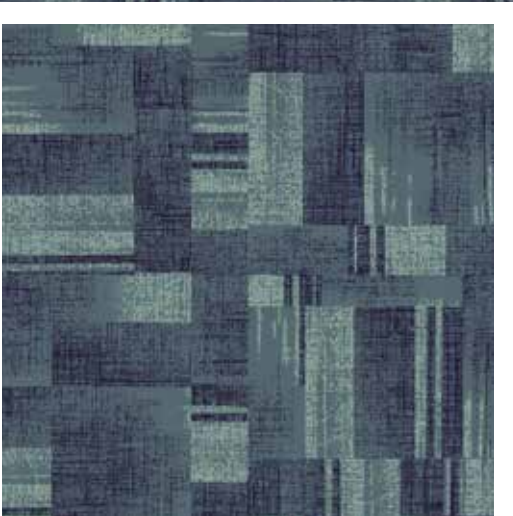


F34-05A



F34-06A





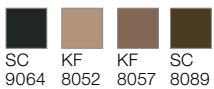
F35-06A



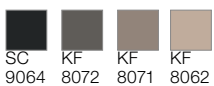
60er Fliesen, rapportgenau
60 x 60 tiles, critical cut
Dalles 60 x 60 cm, avec raccord



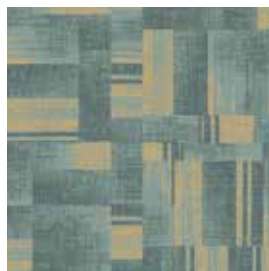
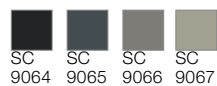
F35-01A



F35-02A



F35-03A



F35-04A

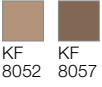


F35-05A





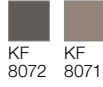
F36-01A



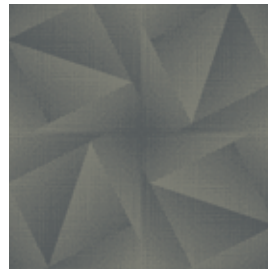
KF 8052 KF 8057



F36-02A



KF 8072 KF 8071



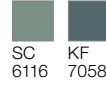
F36-03A



SC 9065 SC 9066



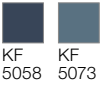
F36-04A



SC 6116 KF 7058



F36-06A



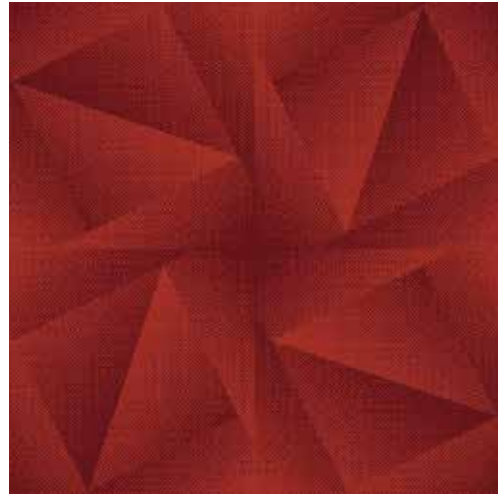
KF 5058 KF 5073

F36-05A



KF 3083 KF 3053

60er Fliesen, rapportgenau
60 x 60 tiles, critical cut
Dalles 60 x 60 cm, avec raccord







FLIESENGRÖSSEN | TILE SIZES | TAILLES DE CARREAUX

Bestellnummer der Fliesengrößen

Order numbers of tile sizes

Numéros de commande des tailles de carreaux

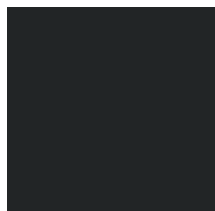
60 × 60 cm: **F30-05A**

120 × 120 cm: **F30-06B**

180 × 180 cm: **F30-02C**



FARBEN | COLOURS | COULEURS



SC 9064



SC 9065



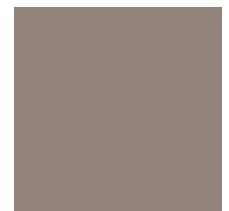
SC 9066



SC 9067



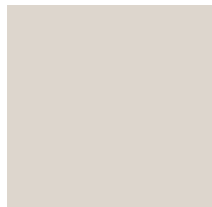
KF 8072



KF 8071



KF 8062



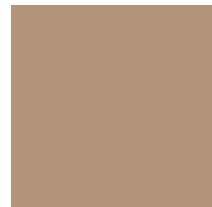
KF 8060



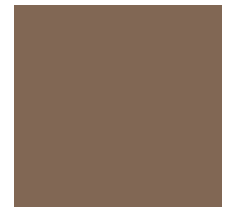
SC 8093



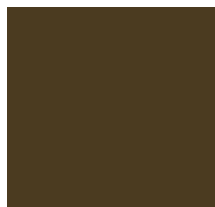
SC 8092



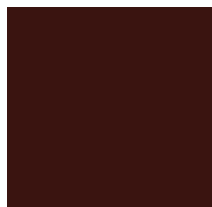
KF 8052



KF 8057



SC 8089



SC 3084



KF 3083



KF 3053



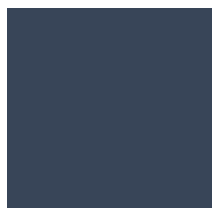
KF 2063



KF 1059



KF 5067



KF 5058



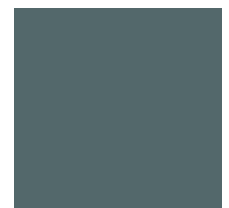
KF 5073



SC 6116



KF 6059



KF 7058

Bitte beachten Sie, dass die in dieser Kollektion dargestellten Farben nur annähernd den tatsächlichen Teppichbodenfarben entsprechen. Verwenden Sie bitte unsere original Farbmuster.

Please note that colours in this printed brochure are approximate. For correct colours please refer to our colour samples.

Veillez noter que les couleurs représentées dans cette collection sont approximatives par rapport aux couleurs réelles. S'il vous plaît utiliser notre nuancier original.

AP 1050 EASY LIFT 2,5 / DC 1050 EASY LIFT 2,5

Warenkonstruktion Construction Structure		Tufting Velour Saxony 1/10" tufted cut pile Saxony 1/10" Tufting Velours Saxony 1/10"
Mustergestaltung Design Dessin		Chromojet Druck Chromojet printed Impression jet d'encre
Polmaterial nach TKG Pile layer Nature de la fibre selon la TKG		100% Polyamid 6 100% Polyamide 6 100% Polyamide 6
Tufting-Träger Primary backing Sous-couche tuftage		75% PES / 25% PA-Vlies 75% PES / 25% PA-non woven 75 % polyester / 25 % non-tissé PA
Rückenausrüstung Secondary backing Dossier d'avers		Easy Lift 2,5 PES - Abdeckvlies Easy Lift 2,5 PES non woven Easy Lift 2,5 PES non-tissé
Lieferform Available size Format de livraison	Fliesen tiles carreaux	Größe nach Anforderung size on demand dimension sur demande
Verwendungsbereich Wear rating Domaine d'application	EN 1307	gewerblich - stark (33) commercial - heavy (33) commercial - élevé (33)
Komfortwert Comfort rating Valeur de confort	EN 1307	LC 3
Flächengewicht Total weight Grammage total	ISO 8543	ca. 3080 g/m ² app. 3080 g/m ²
Gesamtdicke Total thickness Épaisseur totale	ISO 1765	ca. 7,5 mm app. 7,5 mm
Poleinsatzgewicht Pile total yarn weight Poids du velours		ca. 1100 g/m ² app. 1100 g/m ²
Polschichtdicke Pile height above primary backing Épaisseur du velours	ISO 1766	ca. 4,6 mm app. 4,6 mm
Pol-Rohdichte Pile density Densité brute du velours	ISO 8543	ca. 0,15 g/cm ³ app. 0,15 g/cm ³
Noppenzahl Number of tufts Nombre de tufts	ISO 1763	ca. 181700 /m ² app. 181700 /m ²
Elektostatisches Verhalten Vertical resistance Comportement électrostatique	ISO 6356	≤ 2 kV
Bewertete Trittschallminderung Impact sound reduction Indice de réduction des bruits d'impact	ISO 140-8	ca. 29 dB app. 29 dB
Schallabsorptionsgrad α_w Sound absorption rate Coefficient d'absorption acoustique	ISO 354	ca. 0,2 app. 0,2
Wärmedurchlaßwiderstand Thermal resistance Résistivité thermique	ISO 8302	ca. 0,15 m ² K/W app. 0,15 m ² K/W
Prodis-Lizenz-Nummer Prodis-licence-number N° de licence Prodis		75CA6F1A
Allgemeine bauaufsichtliche Zulassung (abZ) abZ-number Agrément technique général		Z-156.601-656
Brandverhalten Reaction to fire Comportement au feu	EN 13501	Cfl-s1
CE-Nummer CE-number numero CE		1658-CPR-3163
DoP-Nummer DoP-number numero DoP		0004
Lichtechtheit Colour fastness to light Stabilité à la lumière	DIN EN ISO 105 B02	≥ 5
Wasserechtheit Colour fastness to water Résistance à l'eau	DIN EN ISO 105 E01	≥ 4
Reibechtheit Colour fastness to rubbing Résistance à l'usure par friction	DIN EN ISO 105 X12	≥ 3-4

Zusatzeignungen
Additional properties
Aptitude additionnelle



Stand Oktober 2018 . Kontaktieren Sie Ihren Ansprechpartner für das aktuelle Datenblatt.
 Status October 2018 . Please contact your representative for the current technical specifications.
 État Octobre 2018. Contactez votre responsable pour la courante fiche technique.

CARPET TILE GUIDE



Halbmond Teppichwerke GmbH
Brückenstraße 1
D-08606 Oelsnitz, Germany
Tel.: +49 37421-42-0
Fax: +49 37421-42-571
info@halbmond.de
www.halbmond.de



HTW DESIGN CARPET
Mindener Str. 6
D-32049 Herford
Tel.: +49 5221-1779-0
Fax: +49 5221-1779-79
info@htw-designcarpet.de
www.htw-designcarpet.de

